



Dell Latitude E7450 Hard Drive Replacement

Written By: Hezekiah Brown

TOOLS:

[Phillips #0 Screwdriver](#) (1)

PARTS:

[Crucial MX500 1 TB SSD](#) (1)

[Crucial MX500 250 GB SSD](#) (1)

[Crucial MX500 500 GB SSD](#) (1)

[Crucial MX500 2 TB SSD](#) (1)

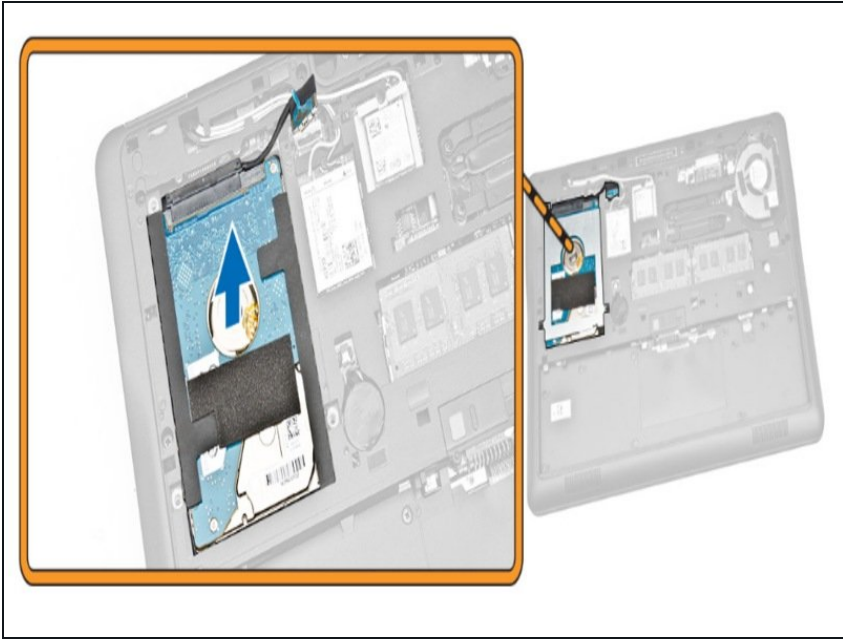
Step 1 — Remove battery and base cover



 Before performing this task, make sure you turn off the computer and disconnect every external device from the machine, be it USB devices, Displays, Power, or anything else.

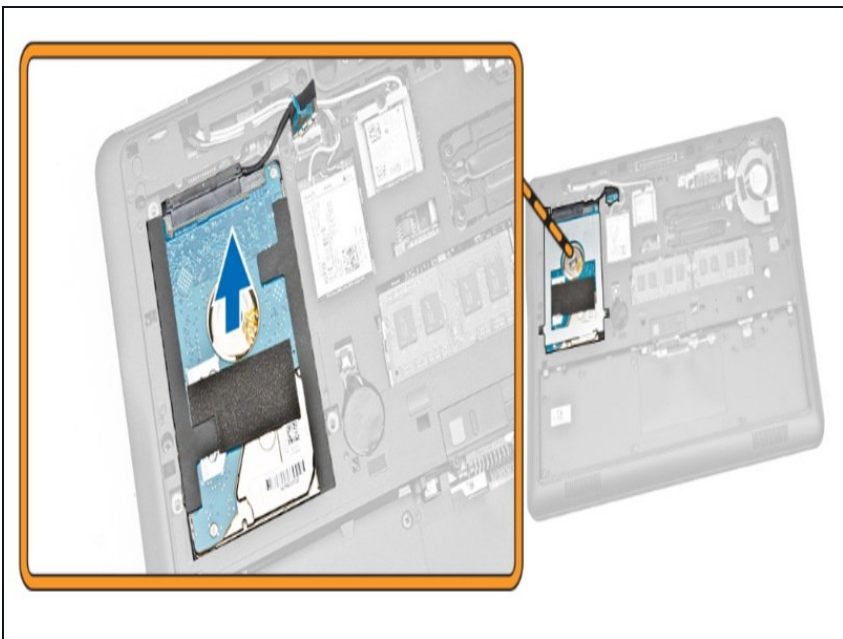
- Slide the release latch to unlock the battery before removing it. To remove the base cover, you should remove the Philips head screw on either end of the laptop in the battery compartment, before lifting it up from the screw hole side.

Step 2 — Disconnect hard drive cable



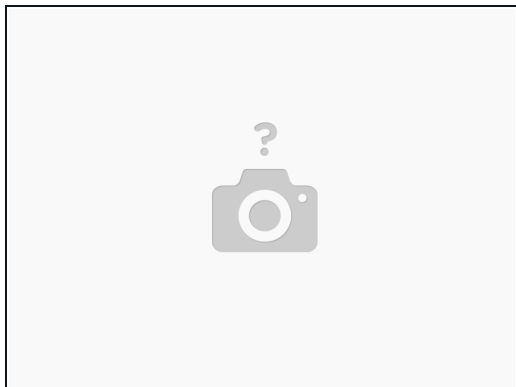
- Carefully disconnect the Hard Drive from the cable, "walking out" one side at a time with a spudger to ensure you don't damage the connector.
- Unscrew the retaining screws for the Hard Drive bracket.
- You will now be able to remove the bracket, taking the drive with it.

Step 3 — Remove hard drive



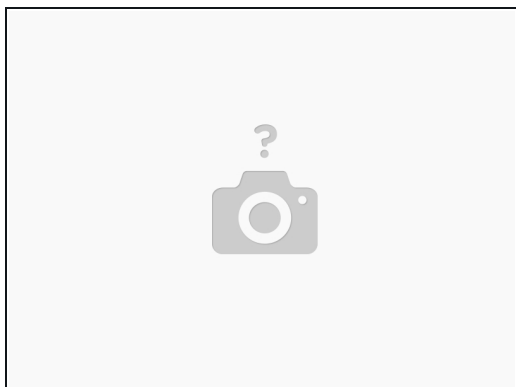
- Remove the computer's hard drive.

Step 4 — Put in new hard drive



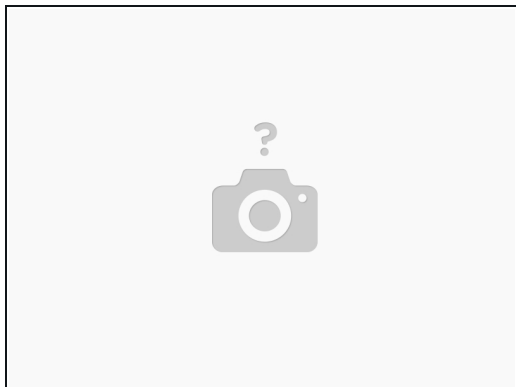
- Install the new drive into the drive bracket, before carefully reconnecting the drive to the cable, and seating it in place.

Step 5 — Hard drive bracket top



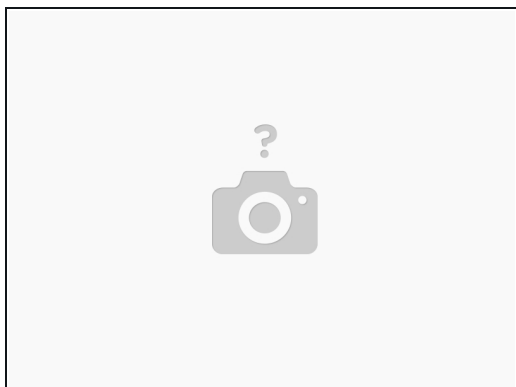
- Put the hard-drive bracket on top of the hard drive.

Step 6 — Tightening screws on hard drive



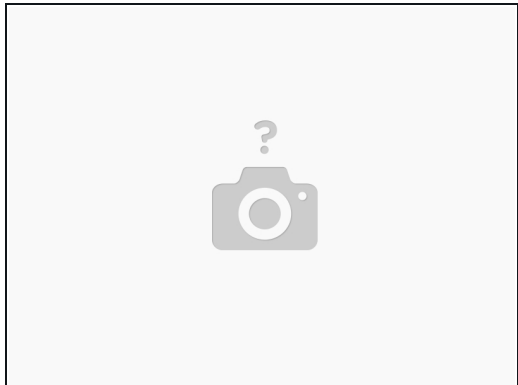
- Tighten the screws so that they can lock the computer's hard drive.

Step 7 — Connecting hard drive cable to system board



- Connect the hard-drive cable to the system board connector.

Step 8 — Install battery and base cover



- Install the battery and base cover.

To reassemble your device, follow these instructions in reverse order.