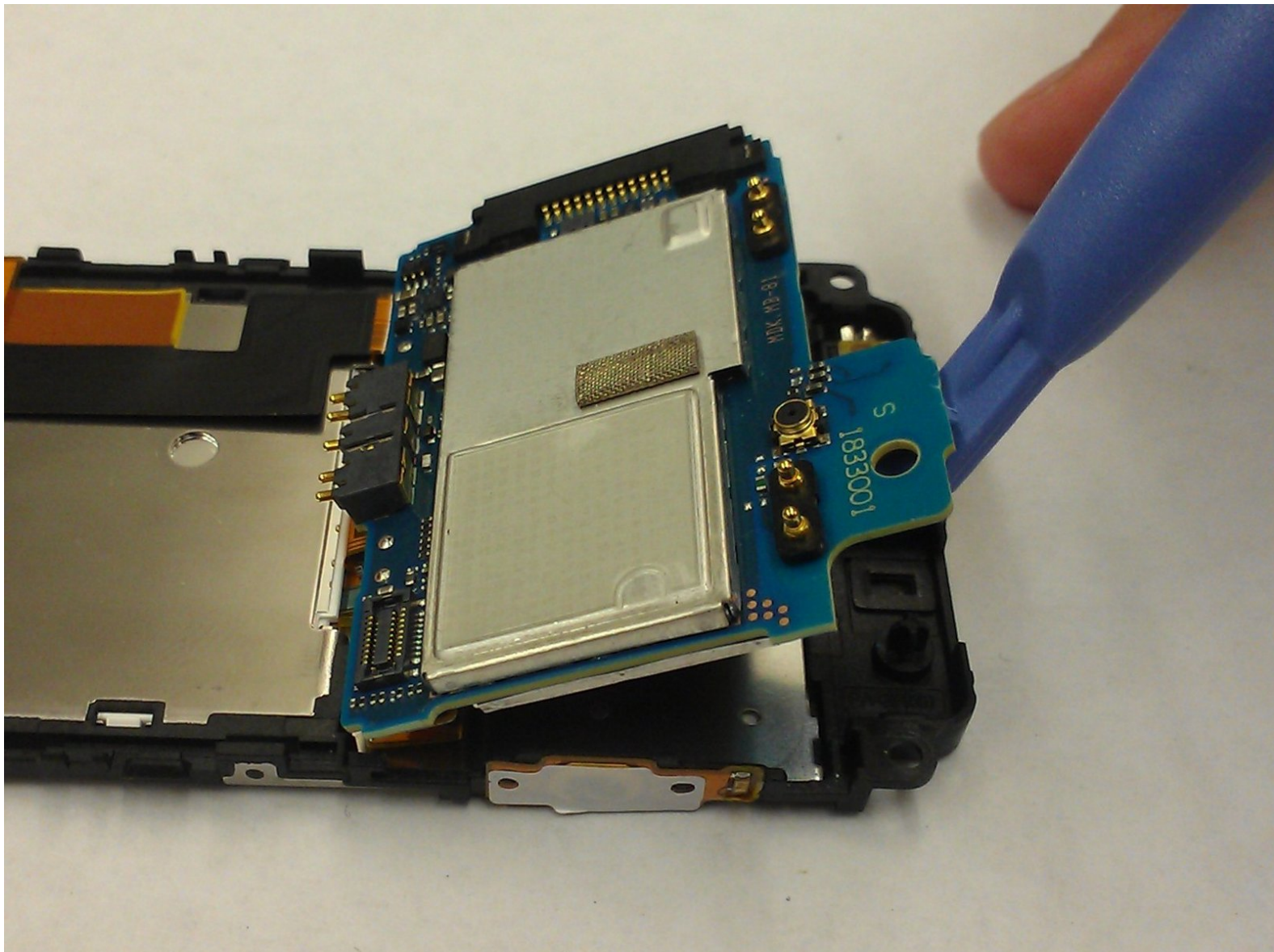




# SONY Ericsson W890i Motherboard Replacement

How to reach the W890i's motherboard for installation purposes.

Written By: Bob



## INTRODUCTION

The following guide details steps on how to reach your SONY Ericsson's motherboard. Once you reach the motherboard, you can identify issues the part may have.



### TOOLS:

- [Spudger](#) (1)
  - [T6 Torx Screwdriver](#) (1)
  - [Phillips #00 Screwdriver](#) (1)
  - [Tweezers](#) (1)
  - [iFixit Opening Tools](#) (1)
-

## Step 1 — Battery



- Flick the two lock tabs into the unlocked positions by pushing each button forward.

## Step 2



- Pop the back cover up using the groove on the top of the phone.

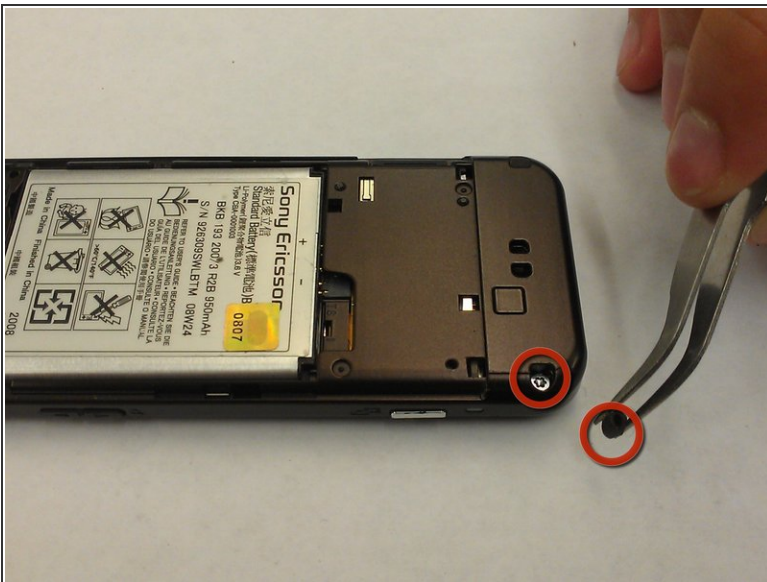


## Step 3



- You can now access the phone's battery.
- Using a spudger, remove the battery and set it aside.

## Step 4 — Keypad and Front Cover



- Remove the two small rubber pieces that cover the lower screws.
- Using a T-6 Torx wrench or screwdriver, remove all four of the small screws at the top and bottom corners on the back of the phones.

## Step 5



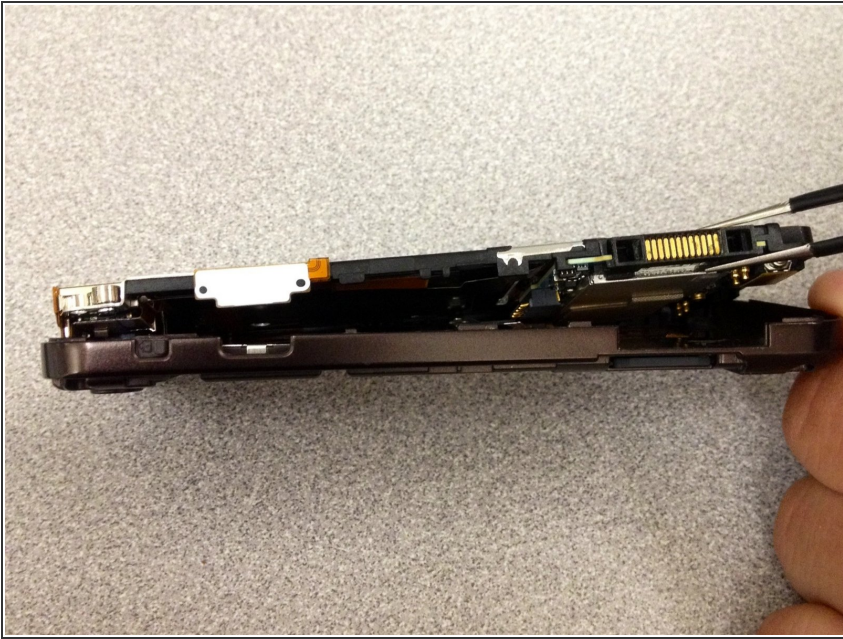
- Gently pry off the faceplate using a plastic opening tool.
- Insert the plastic opening tool into the middle of the front and back panels of the phone.

## Step 6



- Separate the front and back panels that were pryed open with the plastic opening tool.

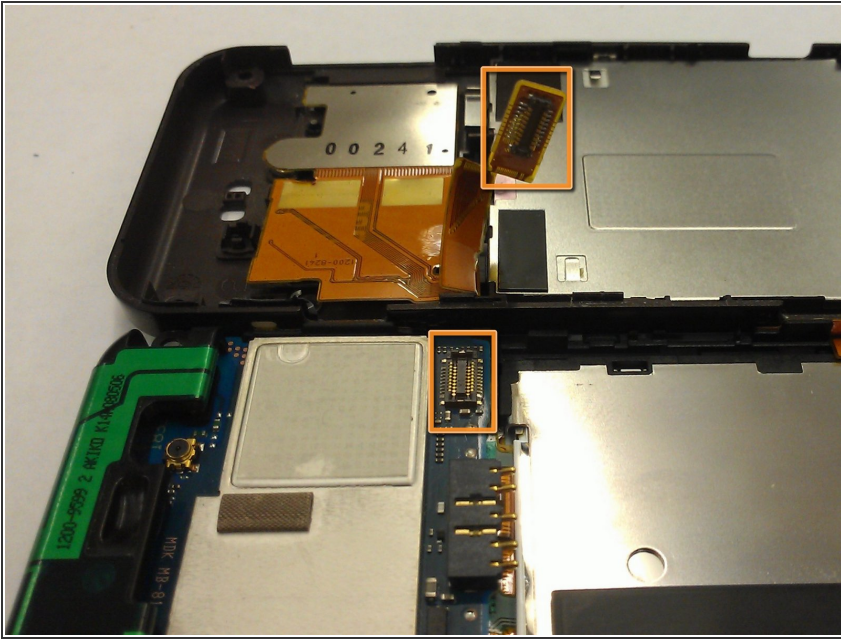
## Step 7 — Motherboard



- Now that the faceplate is off, use tweezers to separate the backplate from the inner manifold.

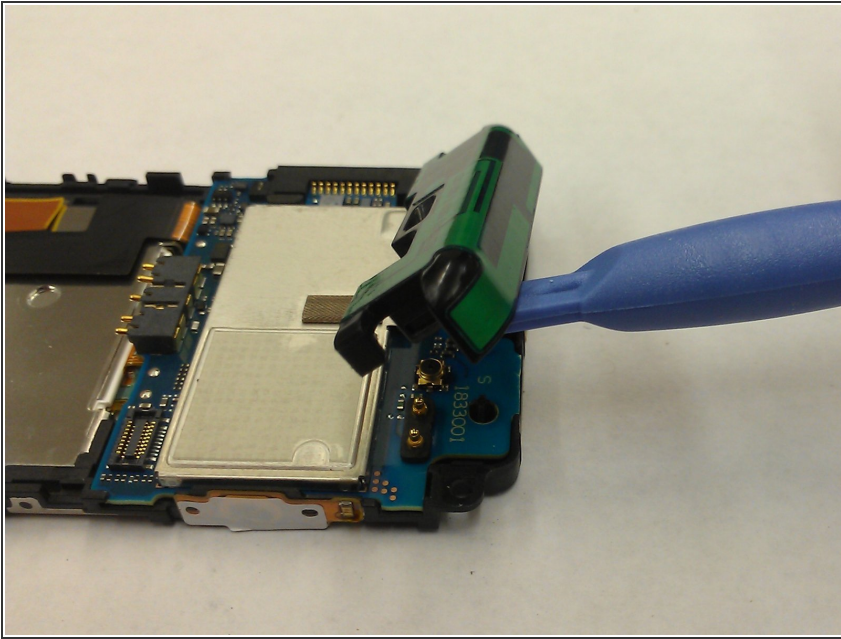


## Step 8



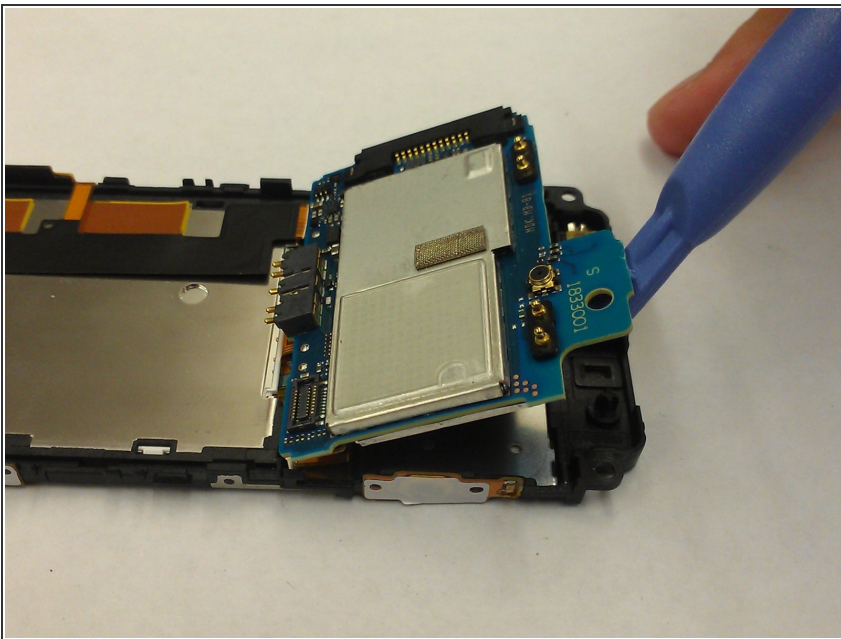
- With both insides of the phone exposed, gently detach the ribbon cable connecting the two inner sides. You can now separate the two sides of the phone.

## Step 9



- The motherboard is located on the side with the green and black bumper on the bottom. Use the plastic opening tool to pry the bumper off.

## Step 10



- To remove the motherboard, apply upwards pressure on the bottom green tab.

To reassemble your device, follow these instructions in reverse order.