



撰写者: SHAN HUANG



介绍

Looking to replace your damaged temperature controller? and don't know how? In this installation guide, we will teach you how to replace a new temperature controller. You can easily do it in just a few steps. This installation is based on the AUX-208P1 electric kettle, but the same concept is also applicable to the replacement of other electric kettle temperature controllers.



工具:

- [Phillips #0 Screwdriver](#) (1)
- [4.5" long nose pliers](#) (1)



章节:

- [New temperature Controller](#) (1)

步骤 1 — temperature controller



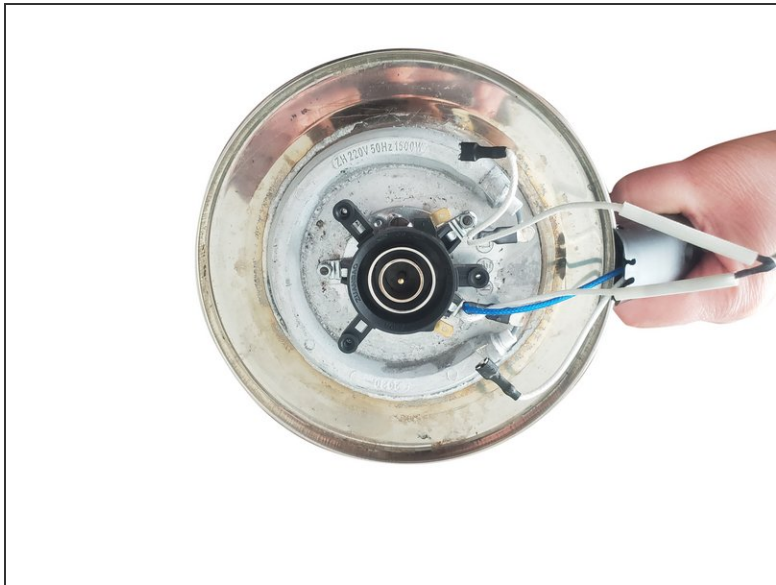
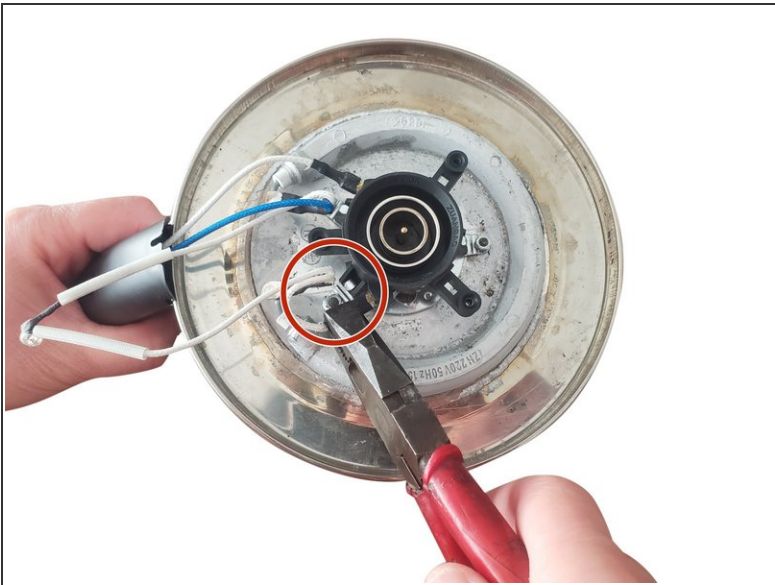
- Clean all the dirt on the bottom of the electric kettle.

步骤 2




- Use a Phillips screwdriver to unscrew the 3/4 in. Phillips Truss-Head Self-Drilling Screws at the bottom of the electric kettle counterclockwise.
 - Remove the base of the electric kettle.
 - Remove the LED indicator buckled on the base.
- ☑ It is recommended to put the removed screws in the storage box to prevent loss.

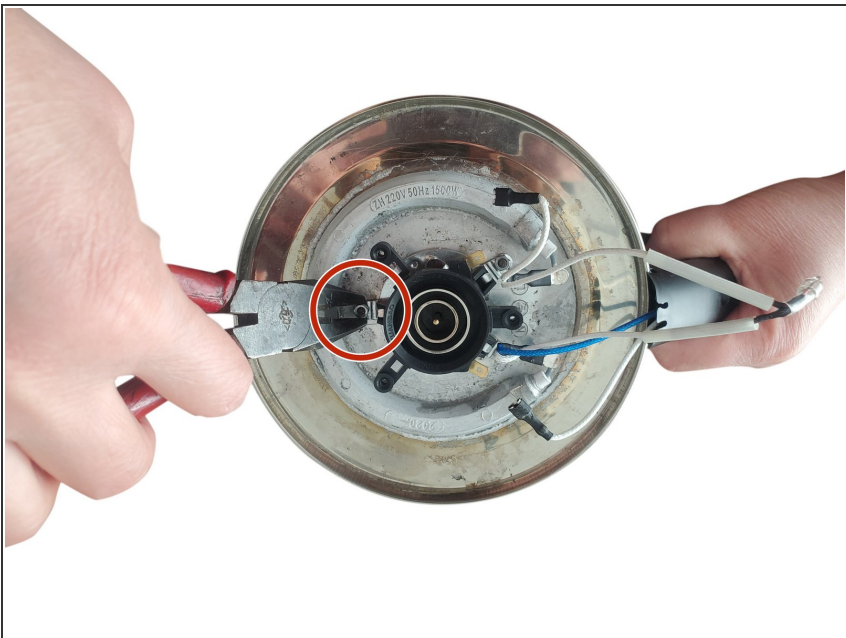
步骤 3



- Use long-nose pliers to clamp the connection between the electric kettle line and the old temperature controller to create a gap, and pull it off.

 Don't use too much force to avoid damage to the line !

步骤 4



- Use long-nose pliers to clamp the three nuts used to fix the old temperature controller, and twist them counterclockwise.

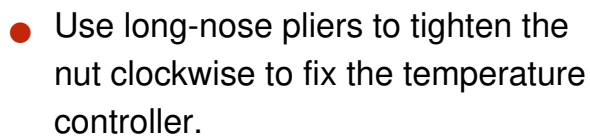
步骤 5



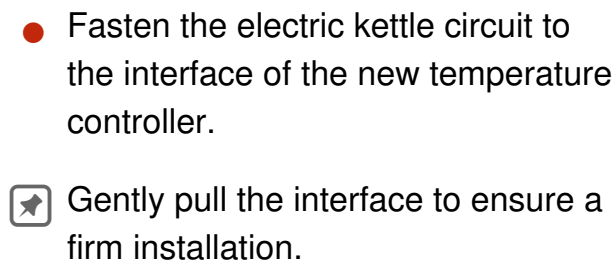
-

- 6 / 8 έιμ

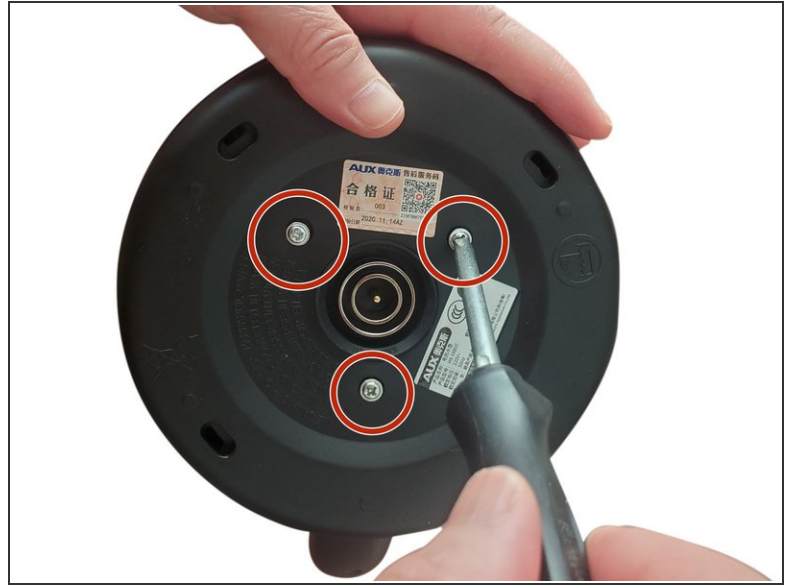
步骤 7



步骤 8



步骤 9



- Re-buckle the removed LED indicator back to the base.
- Buckle the base back to the bottom of the electric kettle.
- Use a Phillips screwdriver to tighten the bottom 3/4 in. Phillips Truss-Head Self-Drilling Screws in a clockwise direction.

When reassembling your device, please follow the reverse order of disassembly.