



How to Fix Left Joystick Drift on a DualShock PS4 Controller Without Soldering

Teaching PS4 players how to fix the drifting problem on the left joystick without soldering. I will provide a thorough guide on how to fix this issue.

Written By: Anubhab Rahman



INTRODUCTION

If your PS4 DualShock Controller is having the drifting joystick problem which is common—automatically moving without touch, becomes stuck once touched—use this guide to repair the issue without any soldering, which many people may not have experience in.

The controller will have to be dismantled completely so that the left joystick can be cleaned and worked on. This simple repair with minimal knowledge is an easy fix. P.S. the gloves are not required to wear when the controller is being worked on.



TOOLS:

- [Flathead Screwdriver](#) (1)
 - [Phillips #00 Screwdriver](#) (1)
 - [Tweezers](#) (1)
 - [Q-Tips](#) (1)
 - [Isopropyl Alcohol](#) (1)
-

Step 1 — How to Fix Left Joystick Drift on a DualShock PS4 Controller Without Soldering



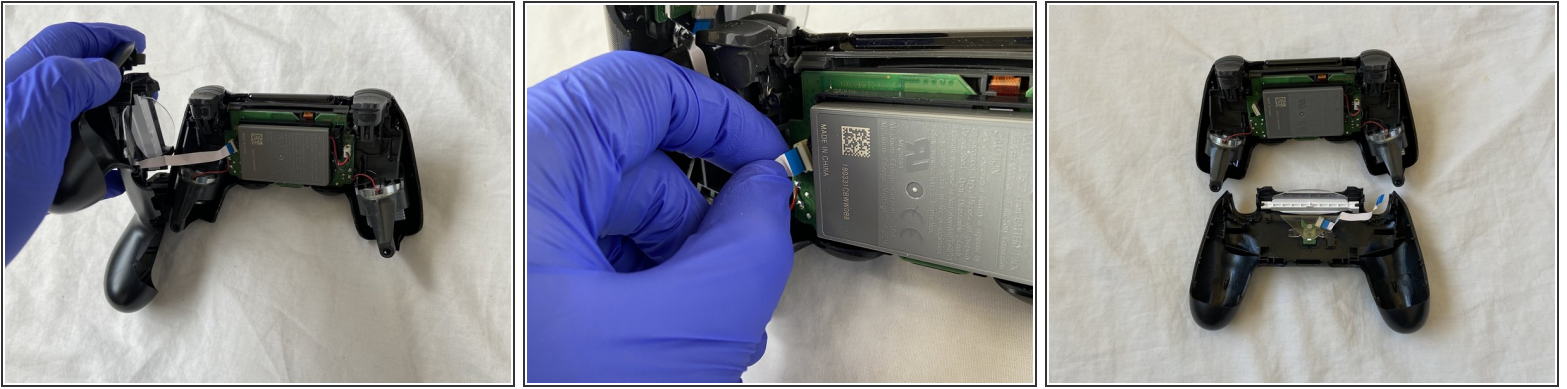
- Remove the four 6.0 mm screws on the back shell of the PS4 controller using the Phillips #00 screwdriver.


Step 2




- Detach the back shell from the rest of the body by pulling the front shell and back shell apart simultaneously.

Step 3



 Be very gentle when completely detaching the back shell because the blue ribbon could be damaged.

- Lightly pull the blue ribbon to separate the back shell and the front shell.
-  The front shell housing the circuit board will be dismantled further.

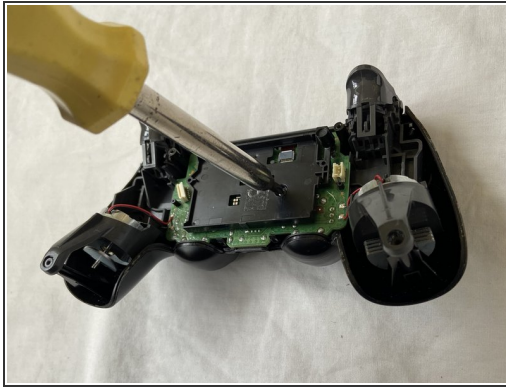
Step 4



- Remove the battery connector from the motherboard by pressing the two sides and pulling on the connector in an upwards direction.

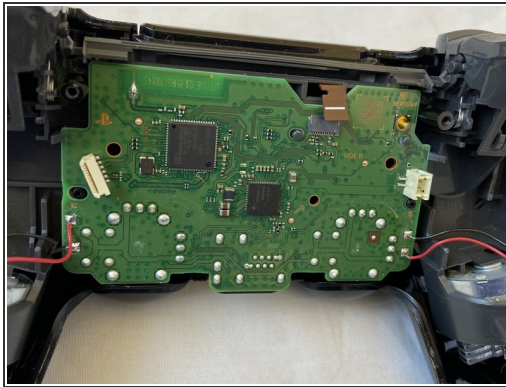
 Be careful not to rip the black or red cables from the connector while removing the cables.

Step 5



- Use the Phillips #00 screwdriver to remove the single 6.0 mm screw attached to the circuit board.
- i Once the screw is removed the battery holder is loosened, which allows for the holder to be removed by pulling it upwards.
- Remove the battery cable.

Step 6



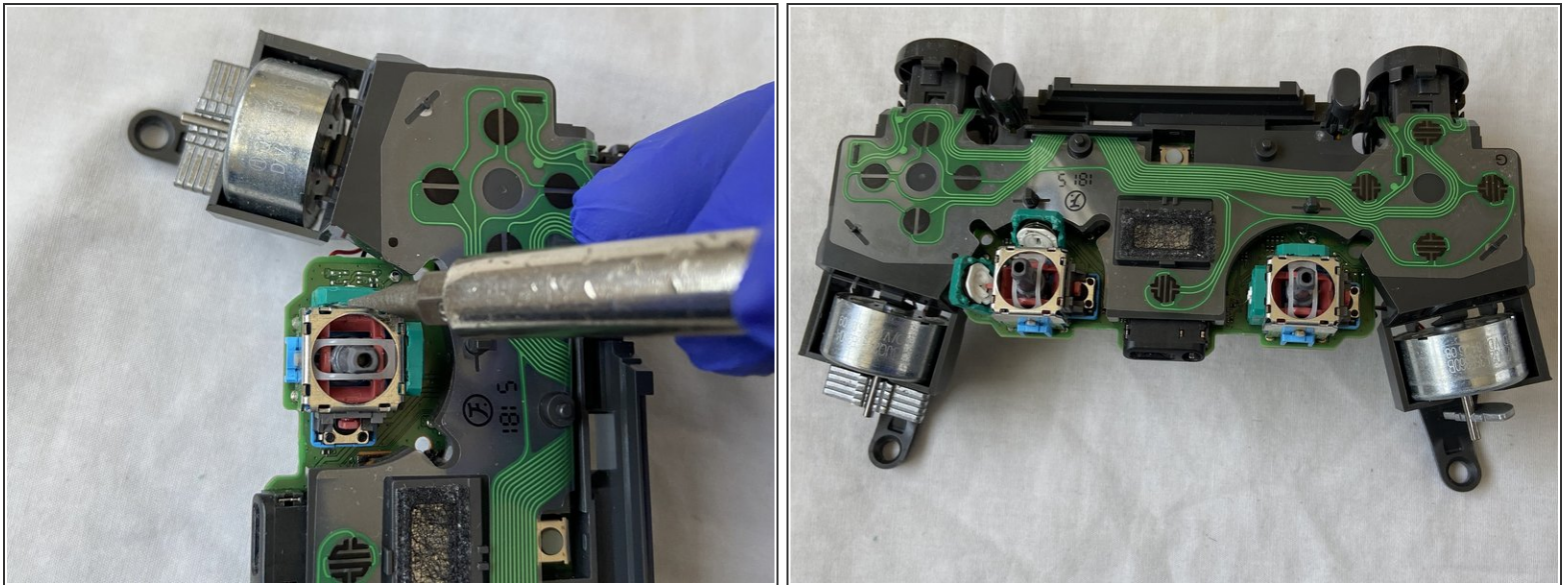
- Detach the cable from the circuit board by pulling upwards.
- Pull the circuit board away from the front shell so it is completely detached from all other parts.

Step 7



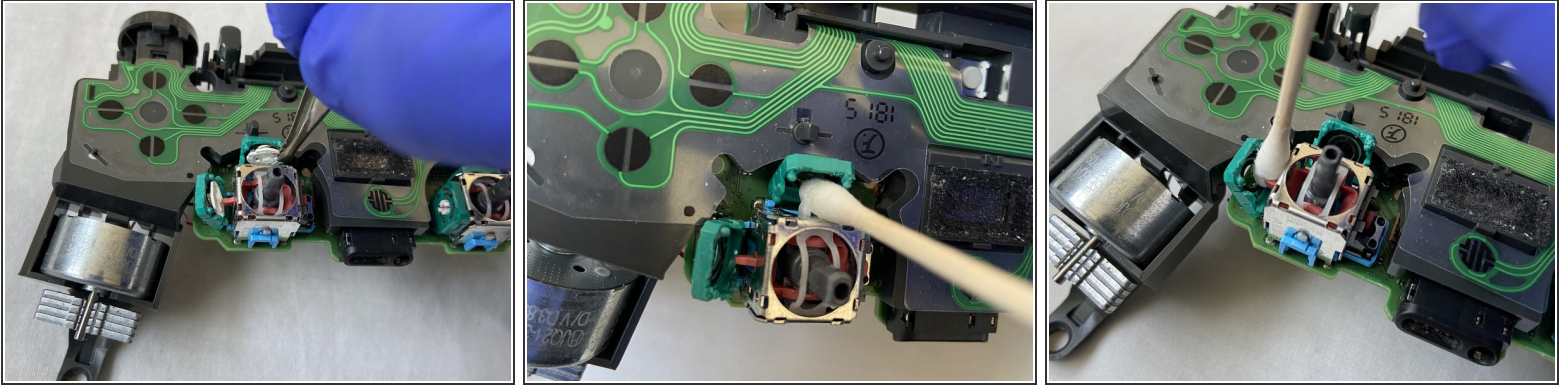
- Remove the left joystick by pulling it upwards until it pops off.

Step 8



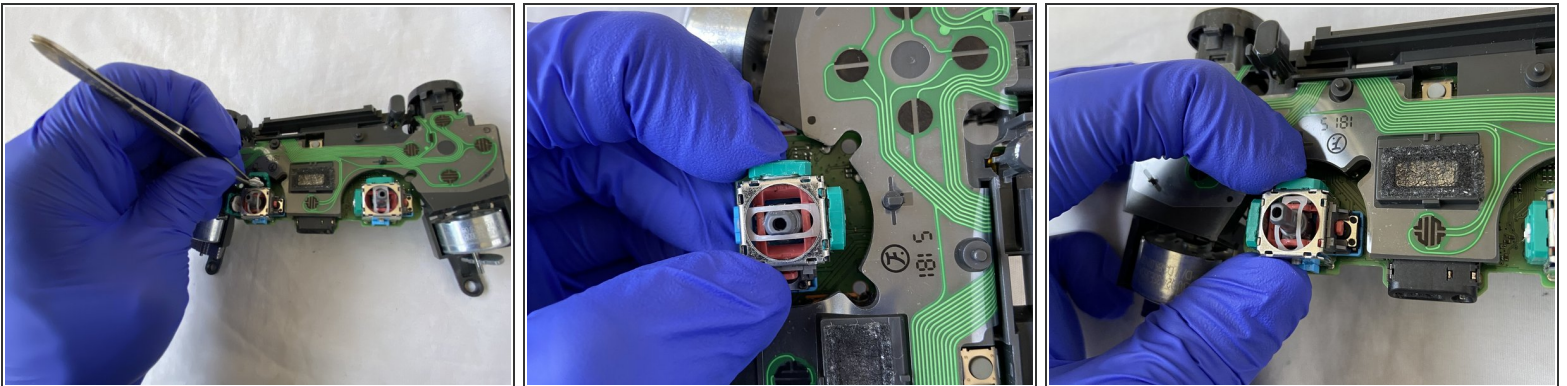
- i On each of the green chambers, there is a gap that separates the sliver body and the green chambers.
- Use the flathead screwdriver to pry open the green chambers by sticking the tip of the flathead screwdriver in between the gap and pushing inwards.
- ! Pry open very gently so the green chambers do not snap/break away from the circuit board.

Step 9



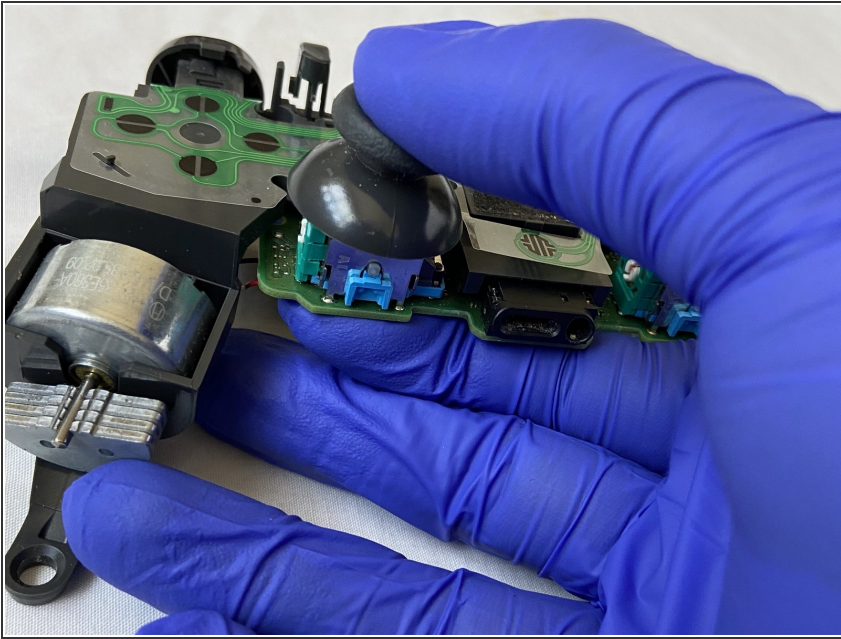
- Once the chambers are open, use tweezers to grab and remove the white disk from each of the chambers.
- Take a Q-tip and dip it in some 90% isopropyl alcohol.
- Use the soaked Q-tip to clean the chambers thoroughly.
- ❗ Let the green chambers dry for about 5-10 minutes before resuming the reassembly.

Step 10



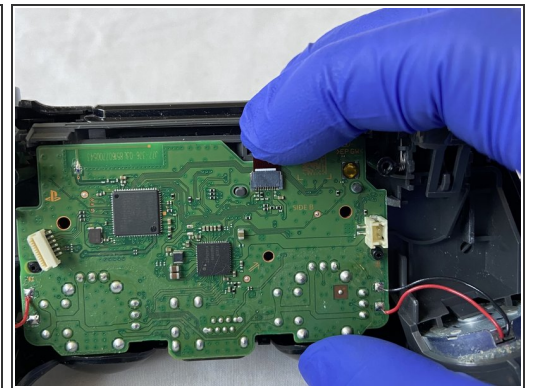
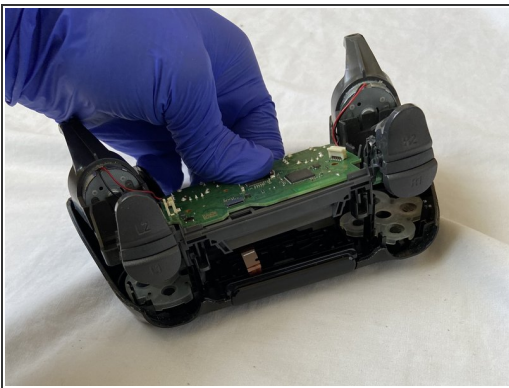
- Place the two white disks back into the green chamber using the tweezers.
- Close both chambers by pressing hard towards the sliver box until they click in.

Step 11



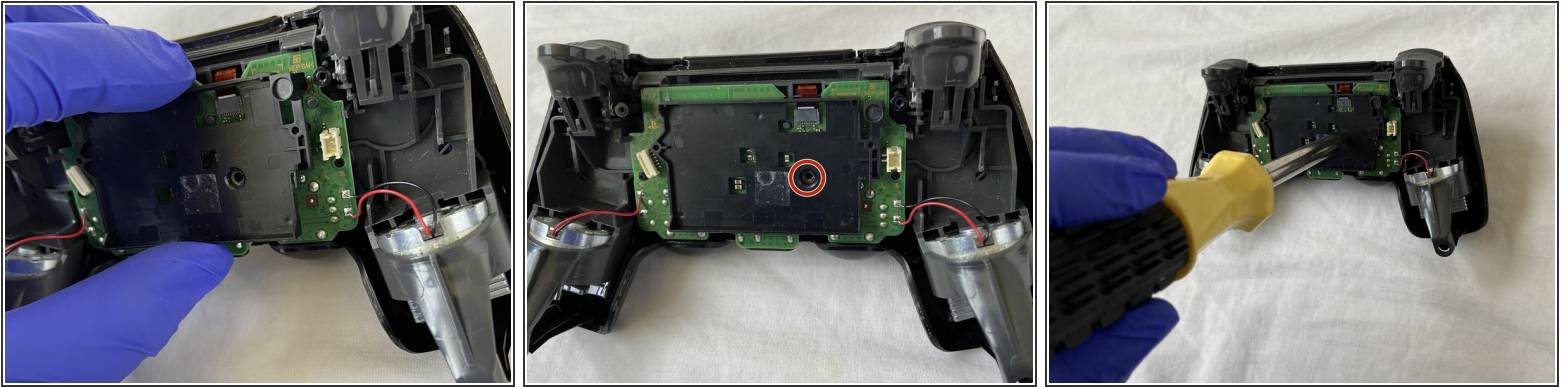
- Take the left joystick and put it back on until the click is heard which confirms that the joystick is firmly held on.

Step 12



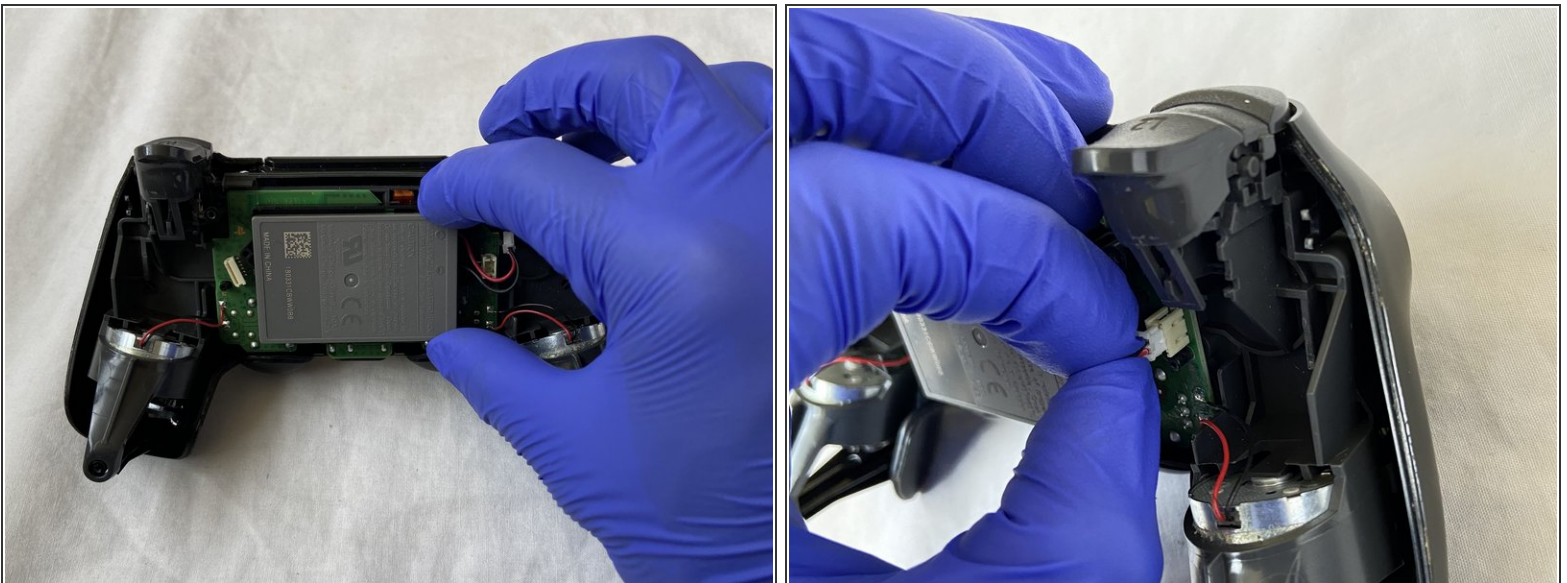
- Loop the cable connector into the circuit board hole from the front shell to attach both parts.
- ① I personally used tweezers to get the cable connector from the front shell to the circuit board.
- Place the connector into its socket and press downwards to connect it back.

Step 13



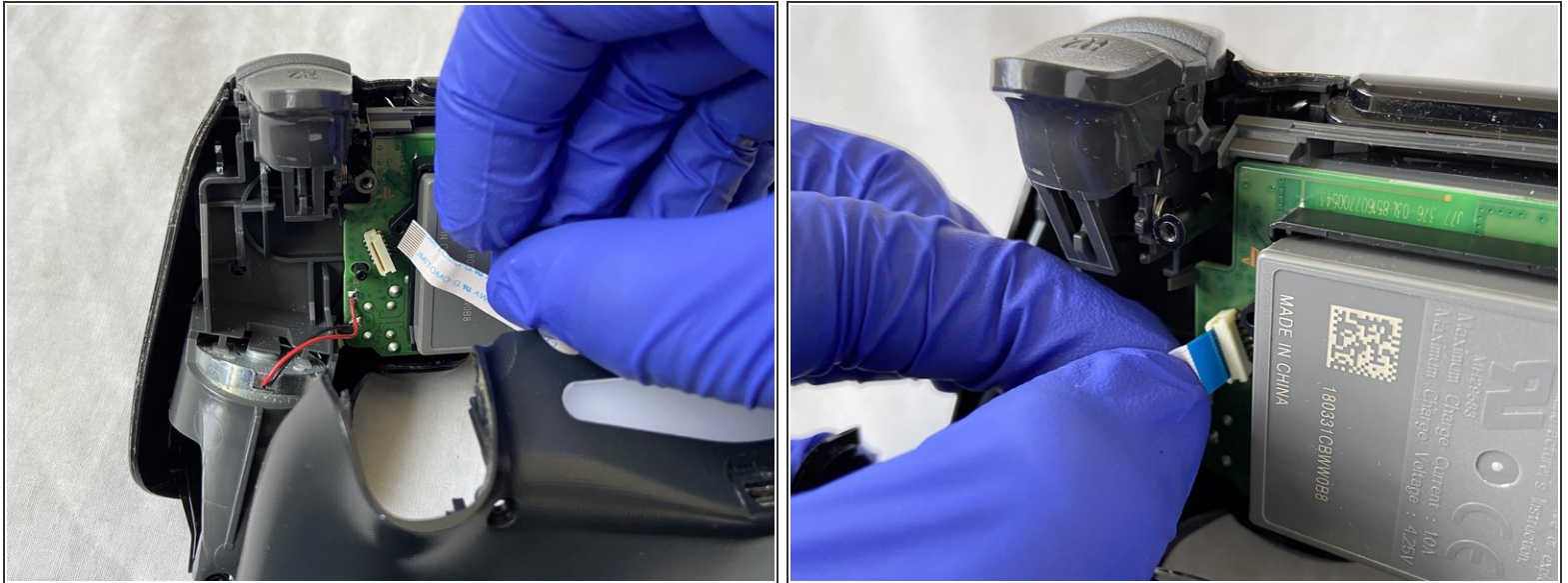
- Take the battery holder and place the pegs into the hole for the proper alignment.
- Replace the 6.0 mm screw onto the battery holder back using the Phillips #00 screwdriver so the battery holder can be held firmly in place with the circuit board.

Step 14



- Place the battery into the holder.
- Connect the red and black wire of the battery into the socket by pressing downwards.

Step 15



- Place the ribbon attached to the back shell on the circuit board and press down so both compartments get attached.

Step 16



- Snap the front shell and back shell together.
- Screw the four 6.0 mm Phillips screws on the back shell screw holders using the Phillips #00 screwdriver.
- Your controller should be all ready!