



Samsung GT-E1200I Teardown

Written By: Stefano De Rossi



🔧 TOOLS:

[Essential Electronics Toolkit \(1\)](#)

Step 1 — Remove the back cover and the battery

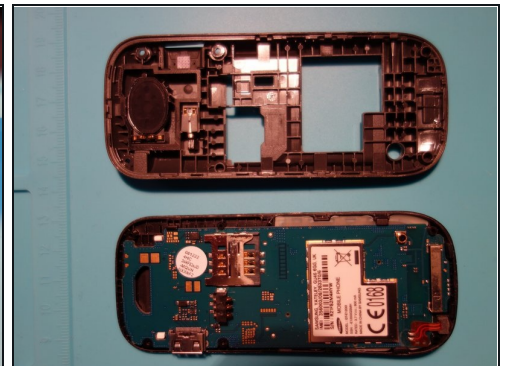


📌 I have used the Jimmy for this job.

⚠️ Be careful when you pry with your Jimmy. It can hurt you if you use it the wrong way.

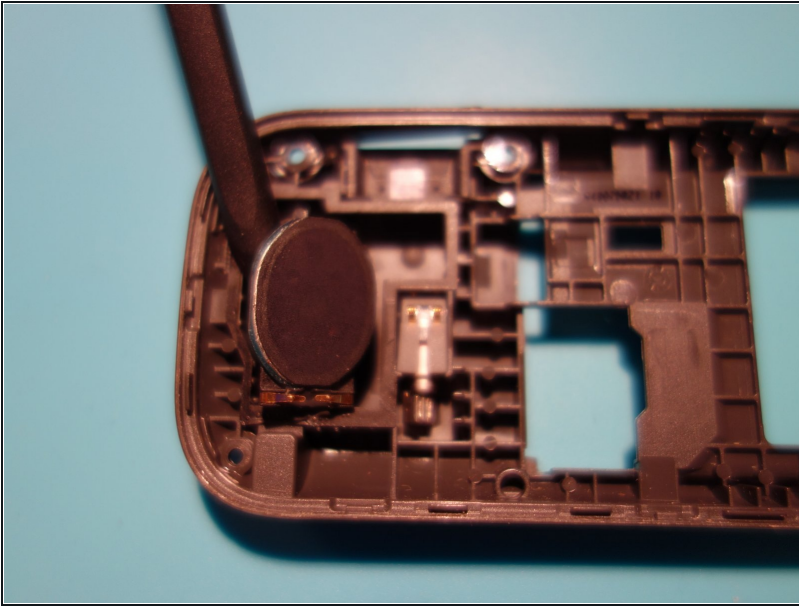
☑️ All the tools featured in this guide are available in the Pro Tech Toolkit.

Step 2 — Remove the inside panel



- Use a Phillips #00 screwdriver to remove the three screws.
- Pry and remove the panel with an opening pick.

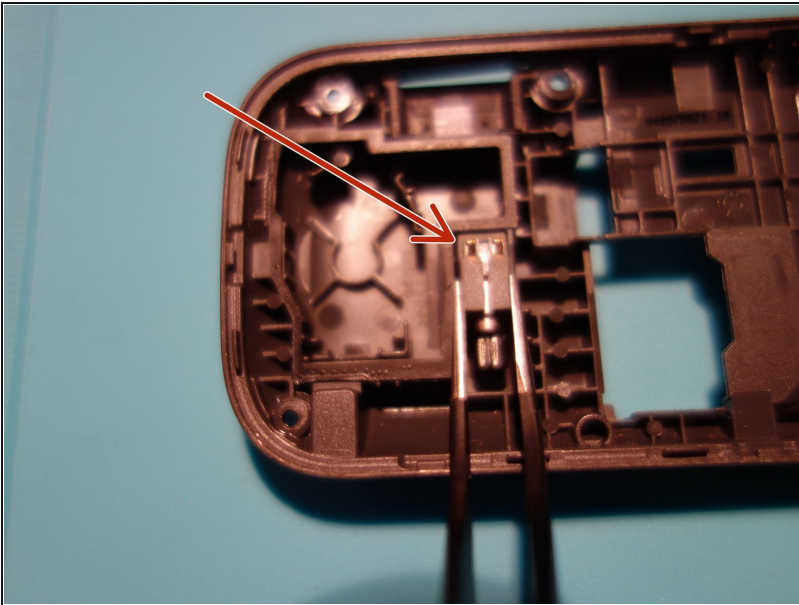
Step 3 — Speaker



- Remove the speaker with a spudger.

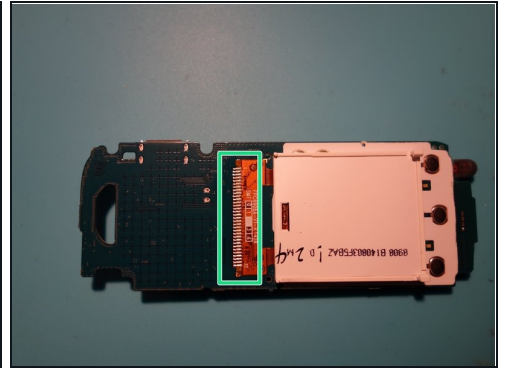
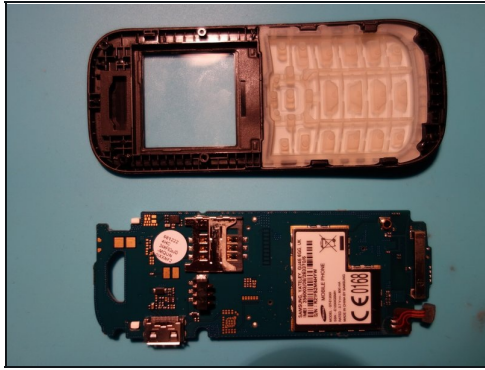
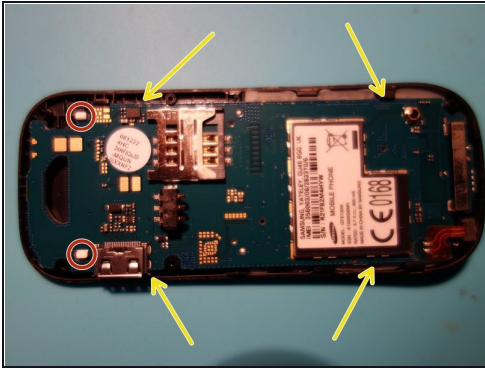
⚠ Do not force it off. If you do, you could break your speaker.

Step 4 — Vibracall



- Remove the vibracall engine with the [tweezers](#)

Step 5 — The mainboard



- Remove the mainboard with the spudger:
 - Move on side here for detach the screen
 - Pull up here for remove the mainboard
- ① The screen is soldered to the mainboard. If you are replacing your screen, you need a desoldering iron.

Step 6 — The keyboard



- Separate the rubber side of the keyboard from the rest of structure

Step 7 — That's all



- It's all done!