



SHIFT6mq Display replacement

Before you start this guide: Make sure that...

Written By: SHIFTPHONES



INTRODUCTION

Before you start this guide: **Make sure that your display is really defective!** Visible cracks could also be on the bulletproof glass and not on the display. If you only have a black screen, it could also be caused by other things, such as the motherboard or the battery.

You can buy a replacement display for your SHIFTPHONE in the [official shop](#) from SHIFTPHONES.

The tools you need are a Torx T3 screwdriver and your fingernail. Optionally, you can use a pick, spatula, and tweezers.

You will find the required Torx T3 screwdriver in the original box of your SHIFTPHONE. Otherwise you can of course also [buy it](#).

A good companion for this repair is the [professional screwdriver](#), which is supplied in a robust metal case together with a practical spatula.

Repairing or opening your SHIFTPHONE does not void the warranty. However, you must pay for any costs incurred during or as a result of the repair yourself.

Important: If any step is unusually difficult or something does not want to be solved, please contact us with SHIFT [Contact](#) before major damage occurs. There you will receive direct support.



TOOLS:

[Schraubendreher Torx T3](#) (1)

Torx T3

wird mit dem SHIFT6mq ausgeliefert. Nachbestellbar im Shift-Shop

[Spudger \(antistatischer Spatel\)](#) (1)

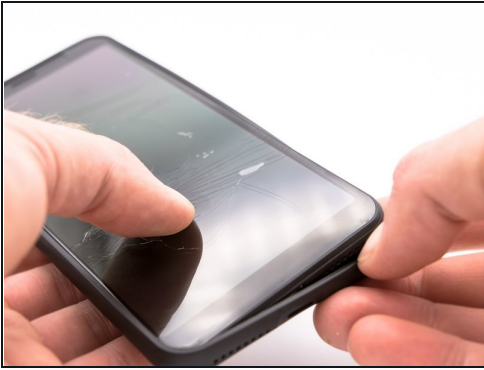


PARTS:

[SHIFT6mq Displayeinheit](#) (1)

<https://shop.shiftphones.com/display-unit.html>

Step 1 — Preparation



- Turn off your SHIFT6mq.
- Remove the bumper.
- Use your fingernail (pick/spatula) to detach the back cover at the gap between the frame and the back cover on the bottom left corner (when looking at the back of the phone).
- Place your finger in the notch, centered under the battery, and lift it out.

Step 2 — Removing the screws



- Use the T3 screwdriver to loosen all 14 screws. Work your way along the ascending numbering of the screws. This is how you make sure you don't forget any.

⚠ The rubberized hole in the top center is for the microphone and not a screw.

- i** If there is a white seal on the screw, you can easily pierce it with the screwdriver. The positions may vary.
- i** All screws in the SHIFT6mq are identical (M1.4 x 3.5). So you can keep them all together in one place.

Step 3 — Remove the Display



- Now run your fingernail between the display frame and the middle frame of the SHIFT6mq.
- ① If you don't want to do it with your fingernail, you can of course use a pick or spatula.
- Very gently peel the display along all sides of the phone.
- ⚠ The display is still connected to the device! Never pull it off forcefully or more than a few millimeters.
- If the display is detached from the frame all around, you can go to the next step...

Step 4 — Flip the Screen



- Now you can carefully lift off the display, with a slight upward movement to avoid straining the cable.

⚠ Make sure that there is never any tension on the ribbon cable underneath.

- Rotate the display around the short, bottom edge. Carefully place the display glass-side down on the SHIFT6mq.
- ① If you want to be on the safe side, you can put foil, paper or an antistatic cloth between the display and the now open phone.

Step 5 — Display Connector



- Disconnect the display connector. Detach the display connector from the short side with a lever movement in the direction of the adjacent connector.

⚠ Be careful not to damage or accidentally pry off any adjacent SMD components.

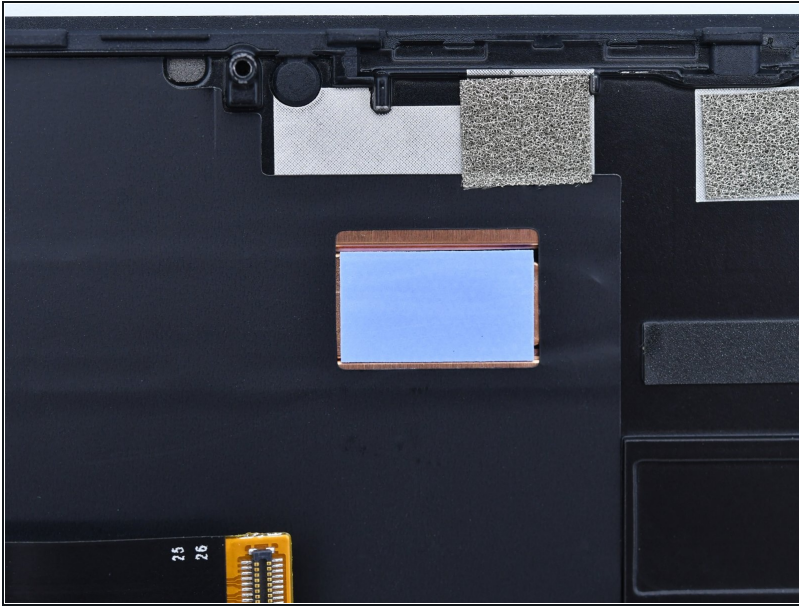
- Once the display is detached, you can carefully put it aside.

Step 6 — Speaker Transfer



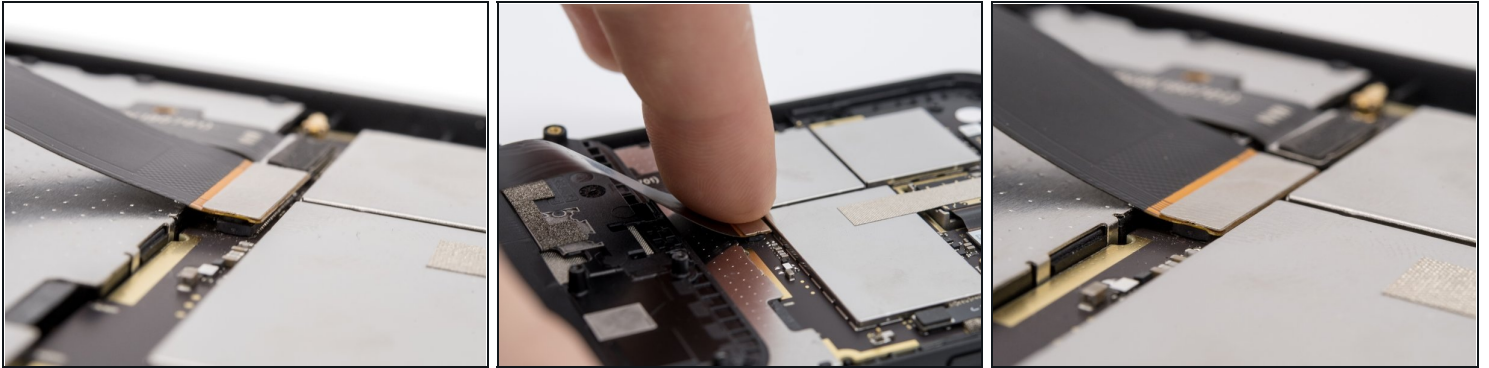
- The speaker is still in the dismantled display. Carefully pry it out of its housing with sturdy tweezers or a thin spatula. There is a slot for it on the right.
- Insert the speaker in the same position and direction in the socket provided in the new display and press it down lightly.

Step 7 — Check Thermal Pad



- i** There is a heat pipe under the display that conducts the waste heat from the CPU to the outside. When installed, the visible copper area sits above the CPU. In order to ensure the ideal heat transport, a heat-conducting pad should sit between the shielding on the motherboard and the heat pipe.
- Check that the thermal pad (light blue) is correctly seated on the new display and is undamaged. The new display comes with a pad already applied.
- ★** It may be that the old pad is no longer on the display but on the motherboard. That's no problem, the function is 100% given. Always ensure that there are not two thermal pads installed in your SHIFT6mq!

Step 8 — Connect Display Connector



- Place the display on the phone with the back facing up.
- ① If you want to be absolutely sure, you can (as before) place foil, paper or an antistatic cloth between the display and the open phone.
- Place the display connector on the connector on the mainboard and make sure that both parts are completely on top of each other.
- ⚠ Please make sure that you never kink the ribbon cable but always leave the largest possible radius.
- ⚠ The connector must not be slanted, otherwise the contact feet can break off. If it doesn't snap easily, it's probably not positioned correctly.
- When both connections are properly aligned, press lightly on the display connector with a finger so that you can feel and hear it snap into place.

Step 9 — Display install



- After the display connector is connected, place the display on the phone with the screen facing out.
- Then press the display along the edge onto the midframe.
- ① Insert the battery and do a short test run to see if the earphones, display and touch are functioning properly.
- ☑ Test the earphones with either a call or a voice message. Alternatively, you can also dial the following in the phone app: `*##777*##` A test app will then open, with which you can select "play on earpiece" under the Audio item to test the earphones.

Step 10 — Replace Screws



- If everything works properly, turn your SHIFT6mq over and screw all 14 screws back into the screw bosses provided.
- ❗ Make sure that the screws are tight, but without damaging the threads or the screw head. A good guideline is 0.6-0.8 Nm.
- ★ If screws are lost or broken, you can buy a few M1.4x3 screws in the [official shop](#).

Step 11 — Last Steps



- Once all the screws have been reinserted, insert the battery, attach the back cover and pull the bumper over the phone.
- ❗ Protect your display additionally with a bulletproof glass. This is included with the replacement display. You can find video instructions on how to attach the bulletproof glass here: [Attaching bulletproof glass](#).

Congratulations! You made it. Enjoy using your repaired SHIFT6mq!