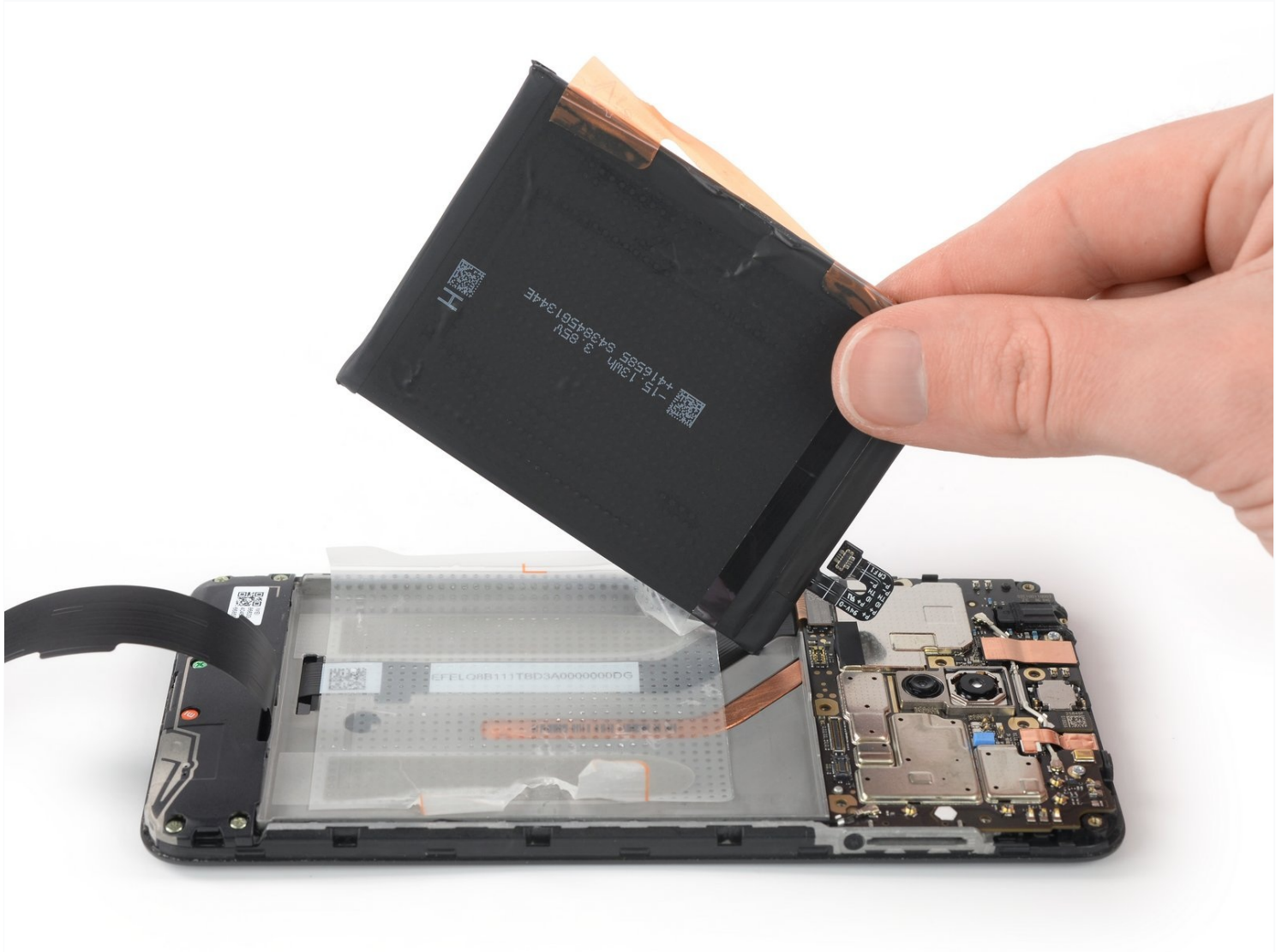




Pocophone F1 Battery Replacement

Use this guide to replace a worn-out or dead...

Written By: Dominik Schnabelrauch



INTRODUCTION

Use this guide to replace a worn-out or dead battery in your Xiaomi Pocophone F1.

If your battery is swollen, [take appropriate precautions](#). For your safety, **discharge your battery below 25%** before disassembling your phone. This reduces the risk of a dangerous thermal event if the battery is accidentally damaged during the repair.

You'll need replacement adhesive to reattach components when reassembling the device.

TOOLS:

T3 Torx Screwdriver (1)

Phillips #00 Screwdriver (1)

SIM Card Eject Tool (1)

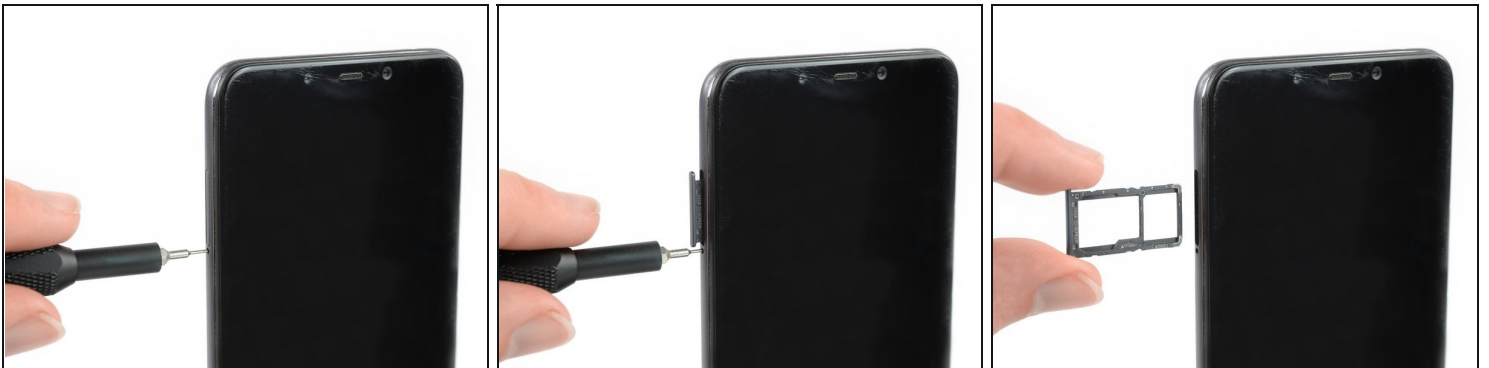
iFixit Opening Tool (1)


iFixit Opening Picks (Set of 6) (1)

Spudger (1)

ESD Safe Blunt Nose Tweezers (1)

Step 1 — Remove the SIM tray



- Before you begin, switch off your phone.
 - Insert a SIM eject tool or a paperclip into the small hole on the SIM card tray on the left edge of the phone.
 - Press firmly to eject the tray.
 - Remove the SIM card tray.
-  When reinserting the cards, make sure to properly orient them in the tray.

Step 2 — Unfasten the back cover screws



- Remove the two 2.7 mm-long Torx T3 screws from the bottom edge of your phone.

Step 3 — Insert an opening tool



- Insert an opening tool between the screen and the back cover at the bottom edge of the screen.
- Slide the opening tool to the bottom right corner to release the plastic clips holding the back cover in place.

Step 4 — Release the clips



- Slide the opening tool around the bottom right corner.
- Slide the opening tool along the right edge of the Pocophone F1 to release the plastic clips.

Step 5



- Slide the opening tool along the top edge of the phone to release the plastic clips holding the back cover in place.

Step 6



- Slide the opening tool along the left edge of the phone to release the remaining plastic clips.

⚠ Try not to remove the back cover all the way yet, the flex cable of the fingerprint sensor is still connected to the motherboard.

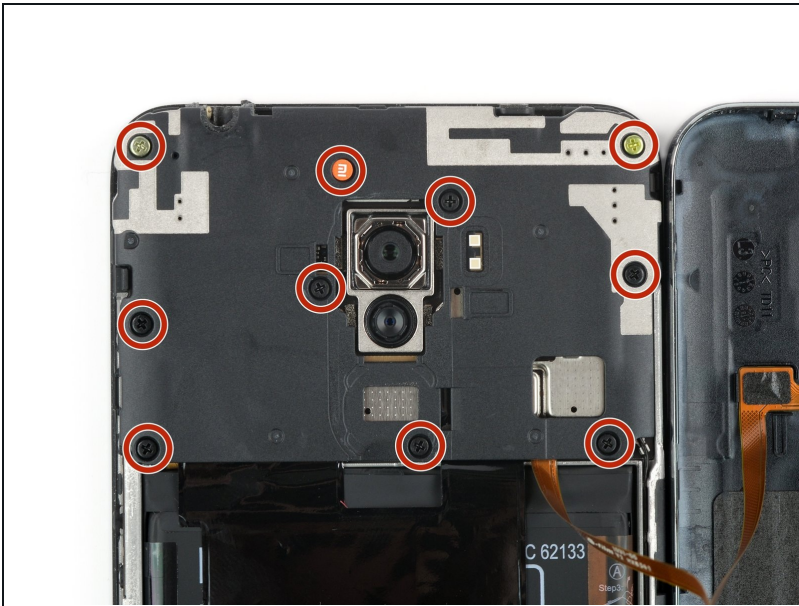
Step 7



- Carefully fold the phone assembly to the left side of the back cover like you'd open a book page.

⚠ Avoid tensioning the fingerprint flex cable during this procedure.

Step 8 — Unfasten screws



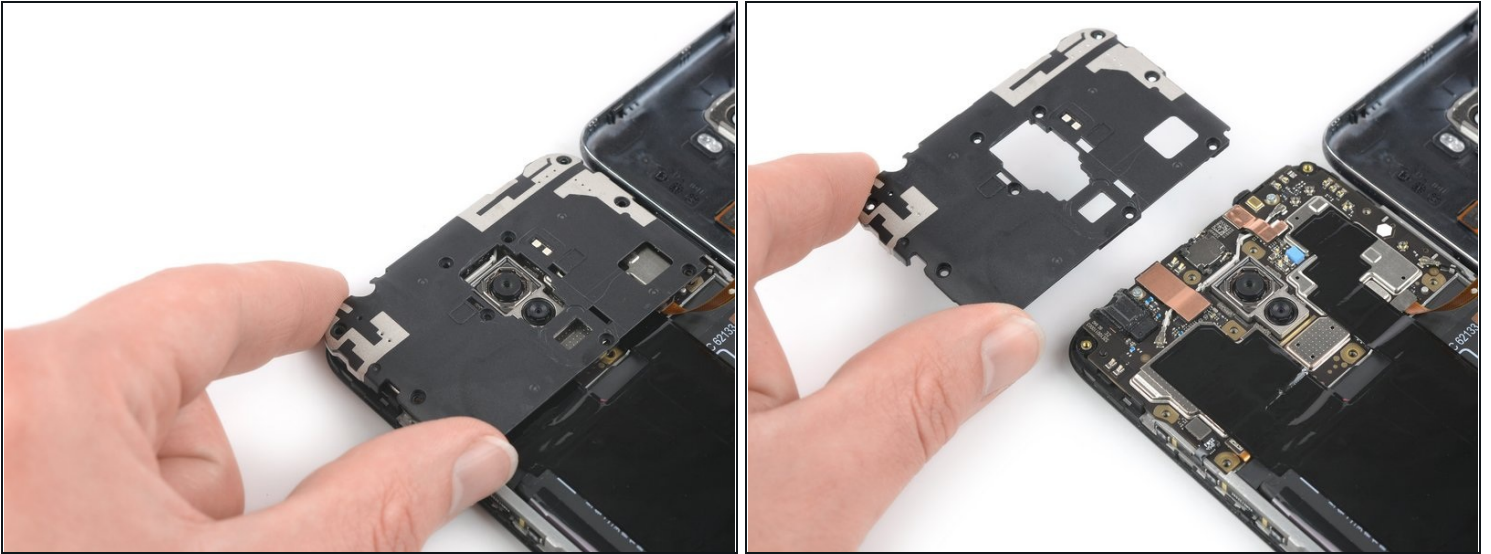
- Remove the ten 3.2 mm-long Phillips screws.

Step 9



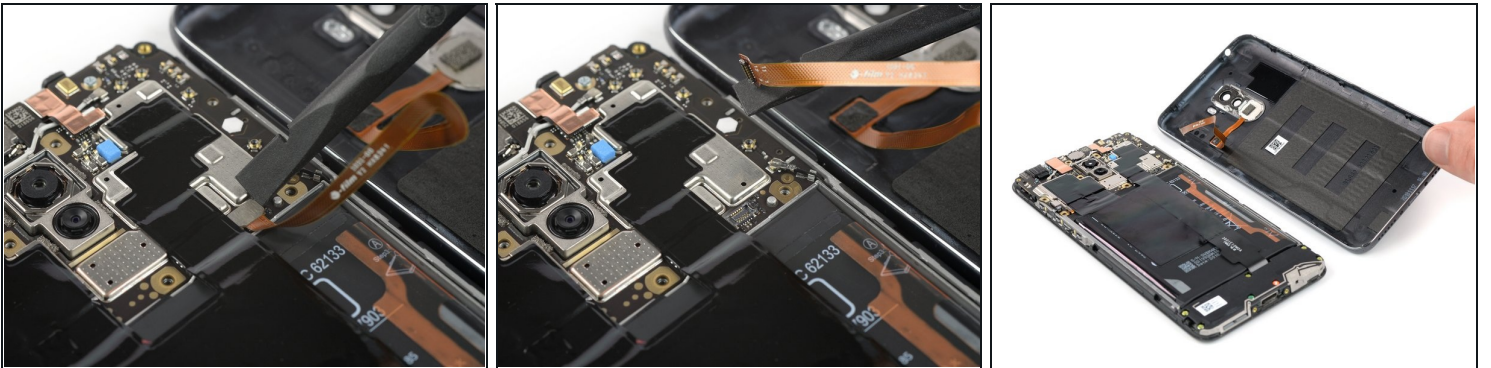
- Slide an opening pick under the bottom left corner of the motherboard cover.
- Slide the opening pick around the corner and along the left edge of the motherboard cover to release the plastic clips holding it in place.
- Use the opening pick to pry up the motherboard cover.

Step 10 — Remove the motherboard cover



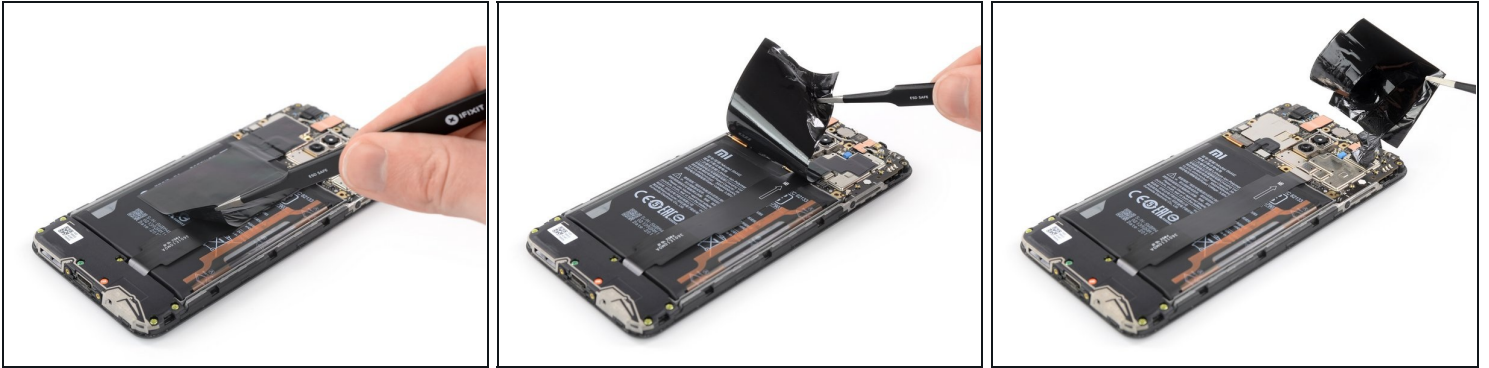
- Remove the motherboard cover.

Step 11 — Remove the back cover



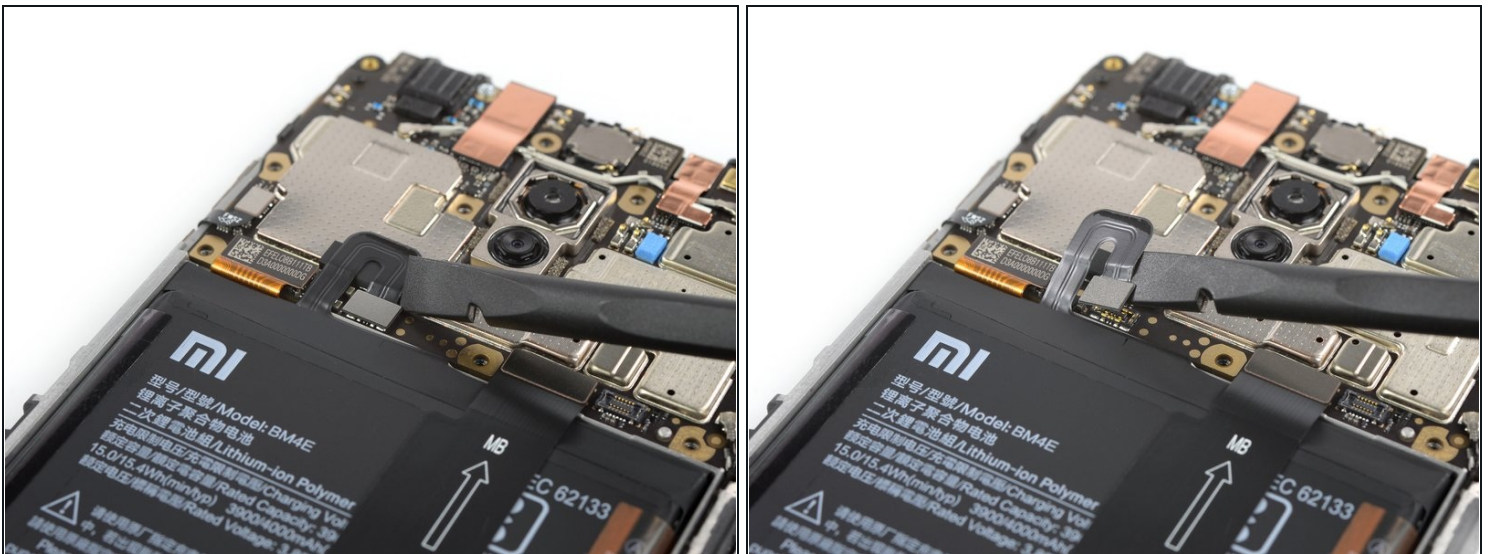
- Use the flat end of a spudger to pry up and disconnect the fingerprint flex connector.
- Remove the back cover.

Step 12 — Remove the protective foil



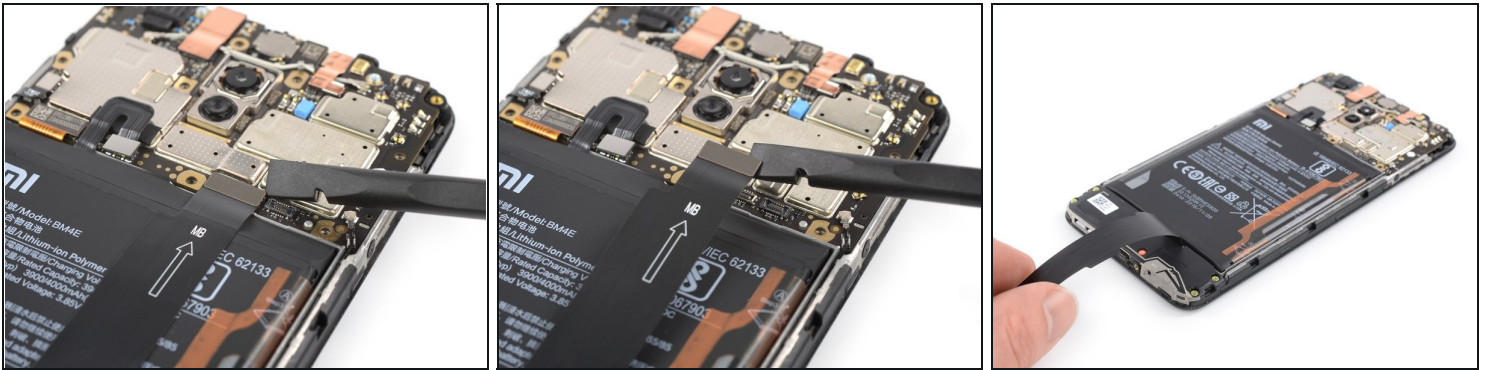
- Use a pair of [tweezers](#) to peel the black protective foil off the battery and logic board and remove it.

Step 13 — Disconnect the battery



- Use the flat end of a spudger to pry up and disconnect the battery connector.

Step 14 — Disconnect the interconnect flex cable



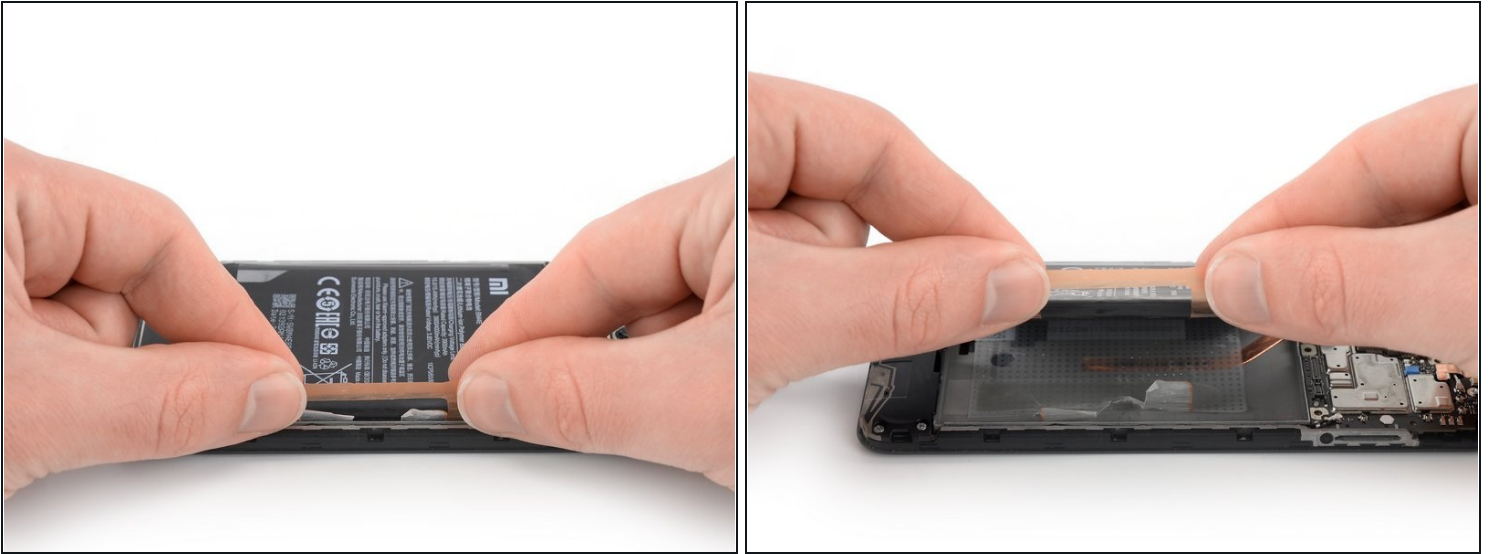
- Use the flat end of a spudger to pry up and disconnect the interconnect flex cable.
- Fold the interconnect flex cable out of your way in order to get access to the battery.
 - ❗ You might want to use some adhesive tape like tesa and tape the flex cable on your desk to hold it in its folded position.

Step 15 — Peel off the stickers



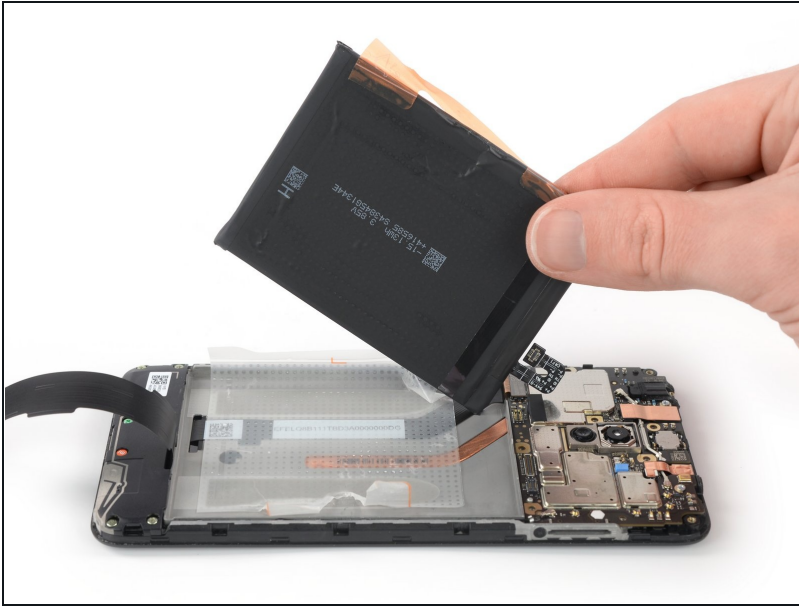
- Use a pair of [tweezers](#) or your fingernails to peel the orange sticker off the battery.
- Peel the small white sticker off the battery.

Step 16 — Pull the battery up



- Grab both ends of the orange sticker.
- Pull both ends of the orange sticker straight up to lift the battery out of its recess.
 - ① If you're having a hard time removing the battery, the adhesive might be a little bit too sticky. You can place a [heated iOpener](#) on the screen or use a heat gun to soften the adhesive beneath the battery. Apply the iOpener for at least two minutes.

Step 17 — Remove the battery



- Peel the remaining adhesive off the battery.
- Remove the battery.

⚠ Do not reuse the battery after it has been removed, as doing so is a potential safety hazard. Replace it with a new battery.

ⓘ You can reuse the old adhesive tape if it's still sticky. However if you want to replace your screen you need to remove it and replace it with new custom cut adhesive tape.

If possible, turn on your device and test your repair before installing new adhesive and resealing.

[Secure the new battery with pre-cut adhesive](#) or double-sided adhesive tape. In order to position it correctly, apply the new adhesive into the device at the places where the old adhesive was located, not directly onto the battery. Press the new battery firmly into place.

To reassemble your device, follow these instructions in reverse order.

For optimal performance, [calibrate your newly installed battery](#).

Take your e-waste to an [R2 or e-Stewards certified recycler](#).

Repair didn't go as planned? Try some [basic troubleshooting](#), or ask our [Answers community](#) for help.