



How to Remove a Filament Clog on a Cubify Cube 3D Printer (3rd Generation)

This guide will show you how to remove a filament clog in your Cubify Cube 3D Printer (3rd Generation).

Written By: Hector Vazquez



INTRODUCTION

If your Cubify Printer has stopped printing and refuses to start a new print, this guide to remove a clog in a Cubify White Cube 3D Printer (3rd Generation) filament cartridge.

The injector needles transfer the plastic filament to the printing bed and also layer the plastic. A clogged injector can damage the cartridge and ruin the filament.



TOOLS:

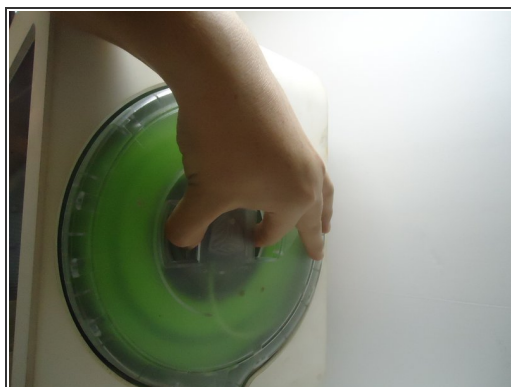
- [Large Needle Nose Pliers](#) (1)
 - [Lighter](#) (1)
 - [Paper Clip](#) (1)
 - [2.5 mm Hex Key](#) (1)
-

Step 1 — How to Remove a Filament Clog on a Cubify Cube 3D Printer (3rd Generation)



- On the top of the printer, turn the injector counter-clockwise and pull the tab.

Step 2



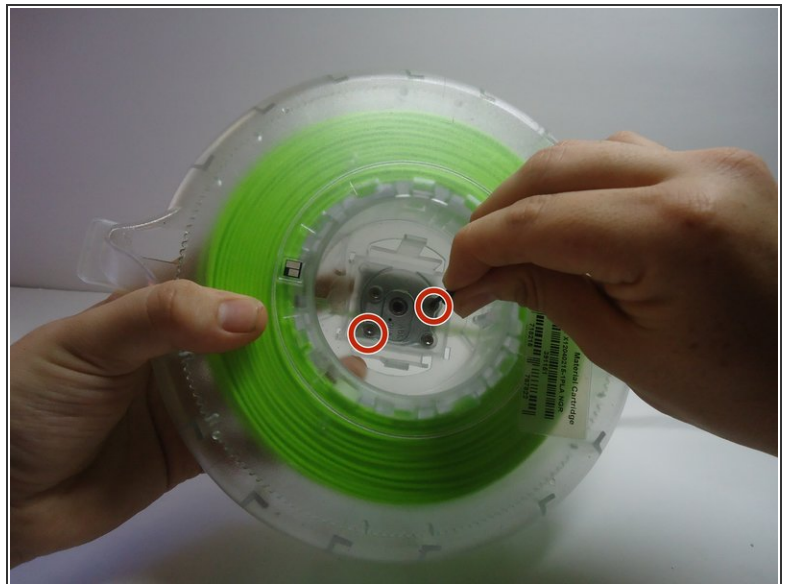
- Insert your fingers in the center of the filament cartridge and slowly pull it away from the printer.

Step 3



- Place the cartridge face up and pry off the lid of the cartridge.

Step 4



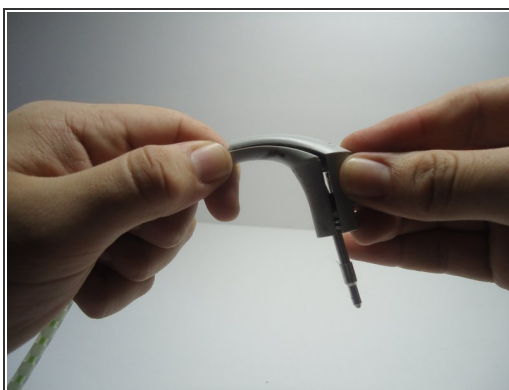
- Gently flip the cartridge on its front and remove the two 2mm Hex screws using a Hex key.

Step 5



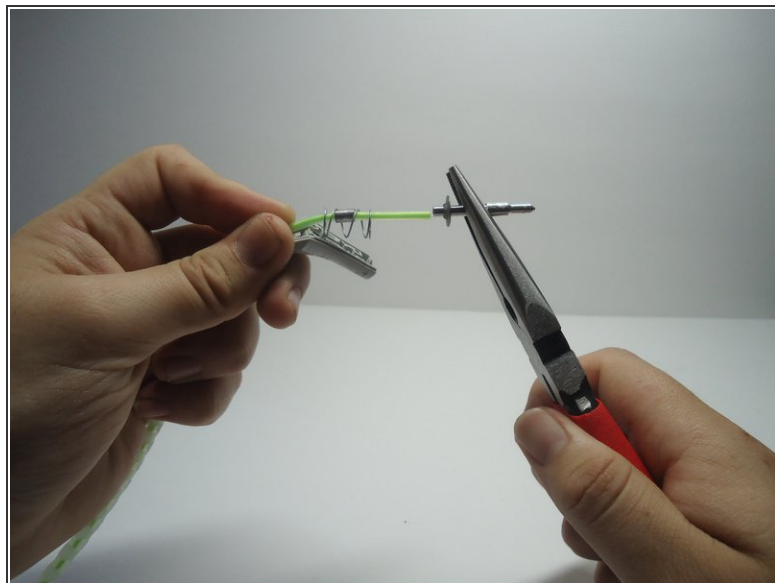
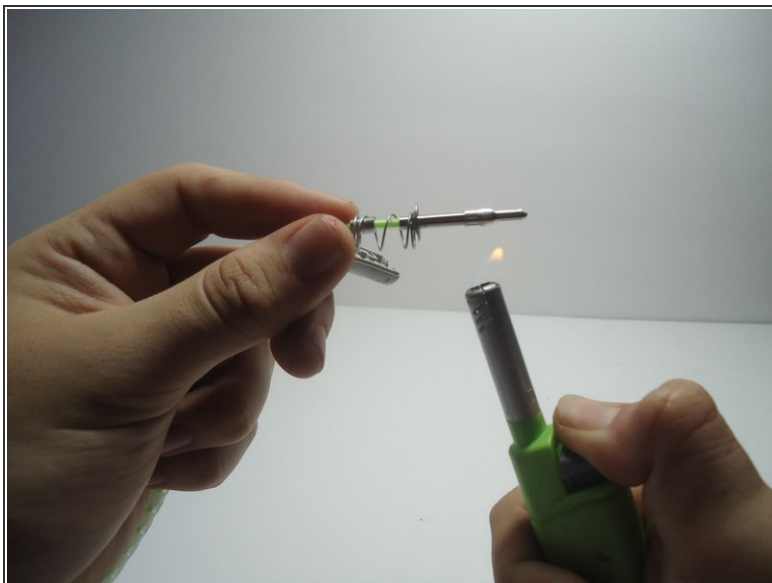
- Flip the cartridge face up and remove the gearbox and extractor tube.

Step 6



- Place your thumb on the front of the injector head and your middle finger on the needle.
- Firmly pull the needle towards your thumb until the injector head cases cracks and pulls apart the case.

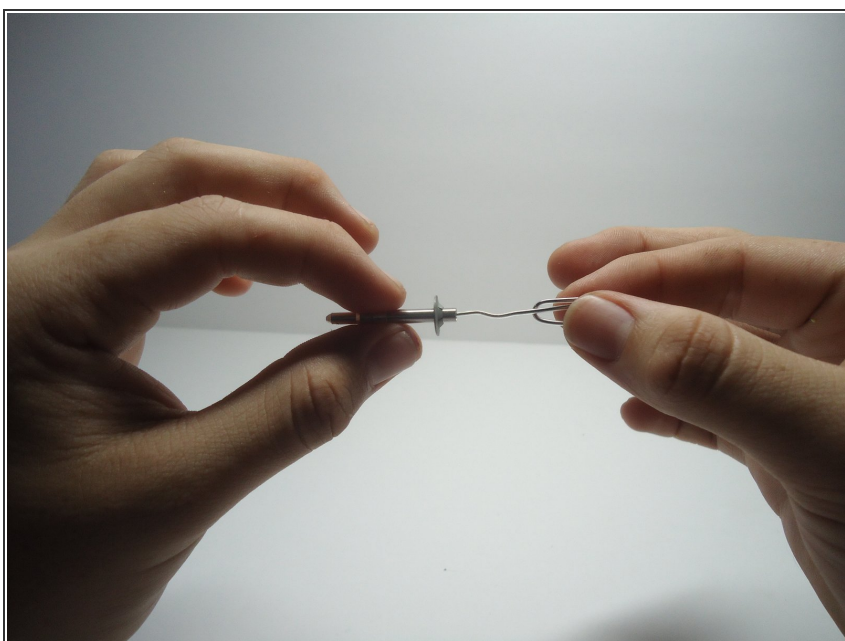
Step 7



- Heat the needle using a lighter, making sure that the flame does not touch the needle.
- Using needle-nose pliers, pull the needle from the tube.

⚠ Do not touch the needle as it may still be hot.

Step 8



- Insert a paper clip and turn until the clog is removed.

To reassemble your device, follow these instructions in reverse order.