



# DualShock 4 CHU-ZCT2U Battery Replacement

Follow this guide to replace the battery on a...

Written By: Sam Omiotek



# INTRODUCTION

Follow this guide to replace the battery on a Sony DualShock 4 CHU-ZCT2U Playstation controller.

This guide will also work for the older CHU-ZCT1U model controller but be sure to order the [JDM-030](#) battery, which has a different sized connector. You can check which model controller you have by referencing the sticker on the rear panel.

If your battery is swollen, [take appropriate precautions](#).



## TOOLS:

- [iFixit Opening Tool](#) (1)
- [Phillips #00 Screwdriver](#) (1)
- [Tweezers](#) (1)



## PARTS:

- [PlayStation 4 Controller \(JDM-040\) Battery](#) (1)

## Step 1 — Remove the rear panel screws



- Use a Phillips screwdriver to remove the four 6.4 mm-long screws from the rear panel.

## Step 2 — Separate the rear panel



- ❗ Four fragile plastic clips hold the panels together. You can see their locations more clearly in [this guide](#).
- ❗ The clips help hold the seams together. If you break these clips, the controller will still work.
- Insert an opening tool into the crease where the front and rear panel meet, starting from the outside edge of either handle.
- Gently pry the rear panel off of the front panel until they become partially separated.

## Step 3 — Release the plastic clips



- Use the opening tool to separate the panels by releasing the plastic clips around the perimeter of the controller.

## Step 4 — Remove the rear panel



- Lift the rear panel directly away from the controller.

**⚠ Do not completely remove the rear panel. It is still attached to the controller by a ribbon cable.**



## Step 5



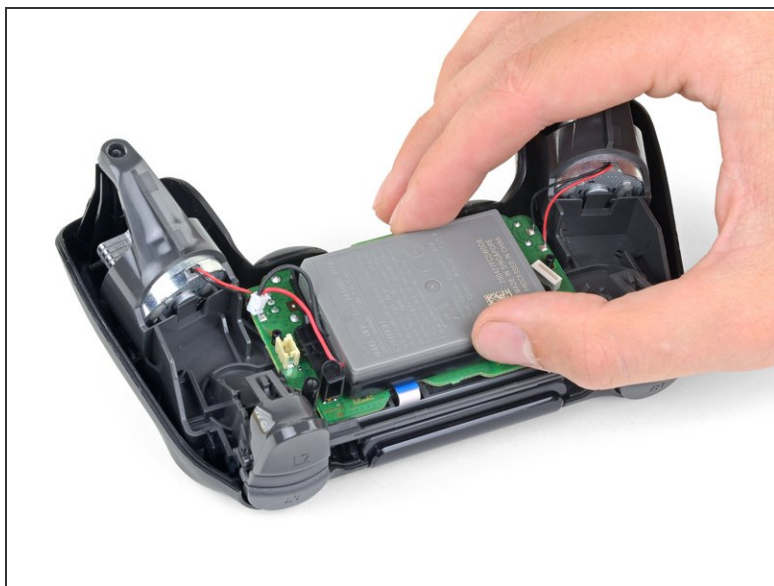
- Use your fingers to gently pull the ribbon cable straight out of its connector on the motherboard.
  - ⓘ Since this cable's pull tab is too small to grab with fingers or tweezers, grab the cable itself. Otherwise utilize pull tabs whenever possible.
- ☑ During reassembly, grab the ribbon cable by the blue tab and gently press the cable straight into the connector. Push the blue tab rather than the ribbon cable itself.

## Step 6 — Remove the battery



- Use a pair of tweezers to pull the battery's power connector straight up from the motherboard.

## Step 7



- Remove the battery.

**To reassemble your device, follow the above steps in reverse order.**

Take your e-waste to an [R2 or e-Stewards certified recycler](#).

Repair didn't go as planned? Check out our [Answers community](#) for troubleshooting help.