



AEG LM6000-U Lavazza A Modo Mio Disassembly

Taking apart the AEG capsule coffee maker

Written By: Mark





TOOLS:

- [Phillips #0 Screwdriver](#) (1)
-

Step 1 — INtroduction



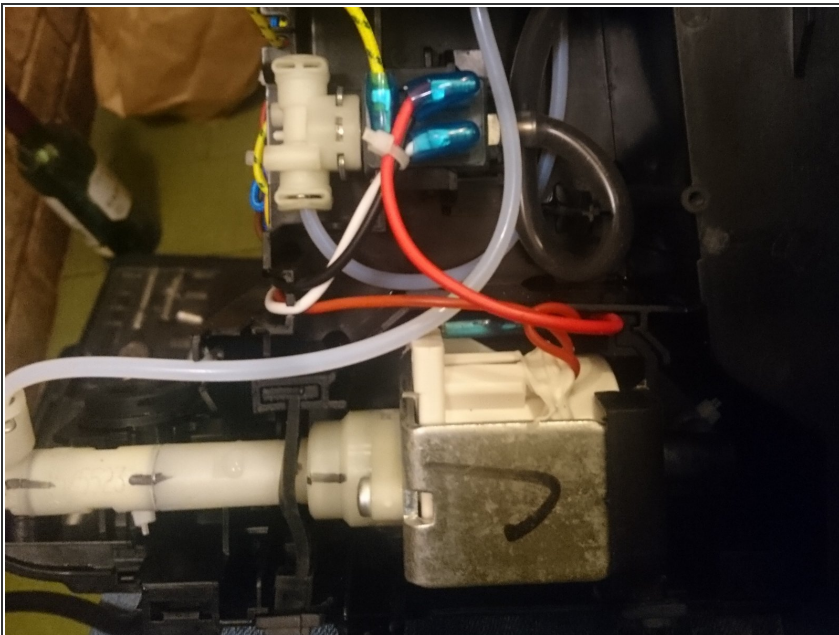
- This guide is about taking apart this coffee maker. In my case the water flow stopped after running dry and a refill. After opening it up, water flow miraculously started to work again.
- Taking it apart is fun, but not needed. You can just wait 30 min, and it will work again. (Maybe some thermal fuse is reset then).

Step 2 — Removing screws



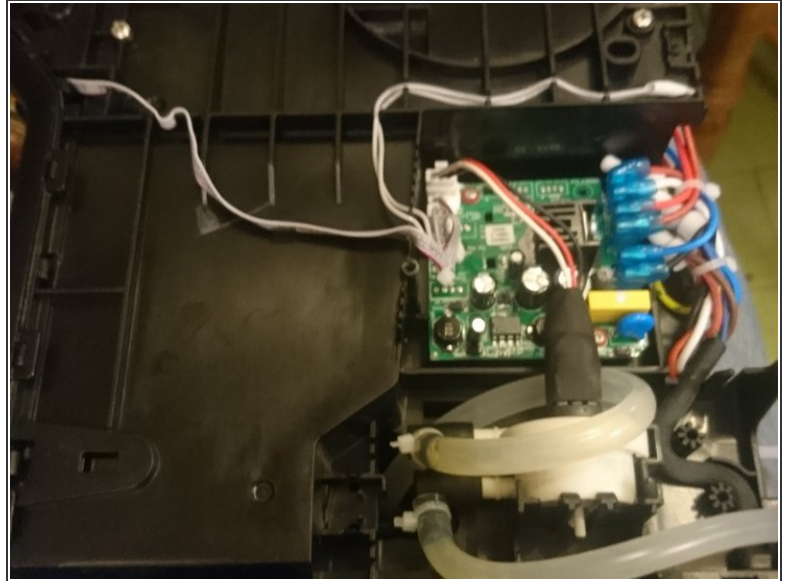
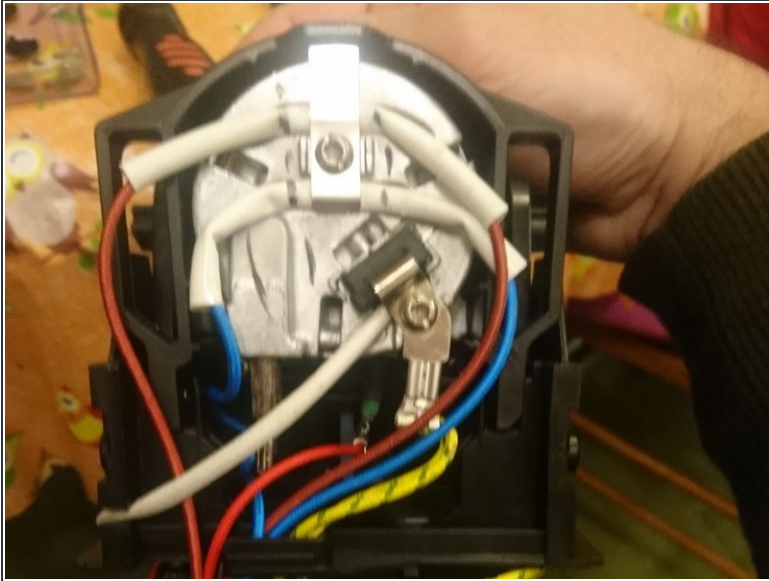
- The machine mainly hangs together with plastic clips. There are 5 screws:
- 1. Right under the powercable guide on the bottom.
- 2+3 Under the Lavazza brand plates on either side.
- 4+5 On the handle, under the plastic cover caps.

Step 3 — Pictures



- Top picture: valve and water pump below that.

Step 4



- Heating element
- PCB has useful labels .

To reassemble your device, follow these instructions in reverse order.