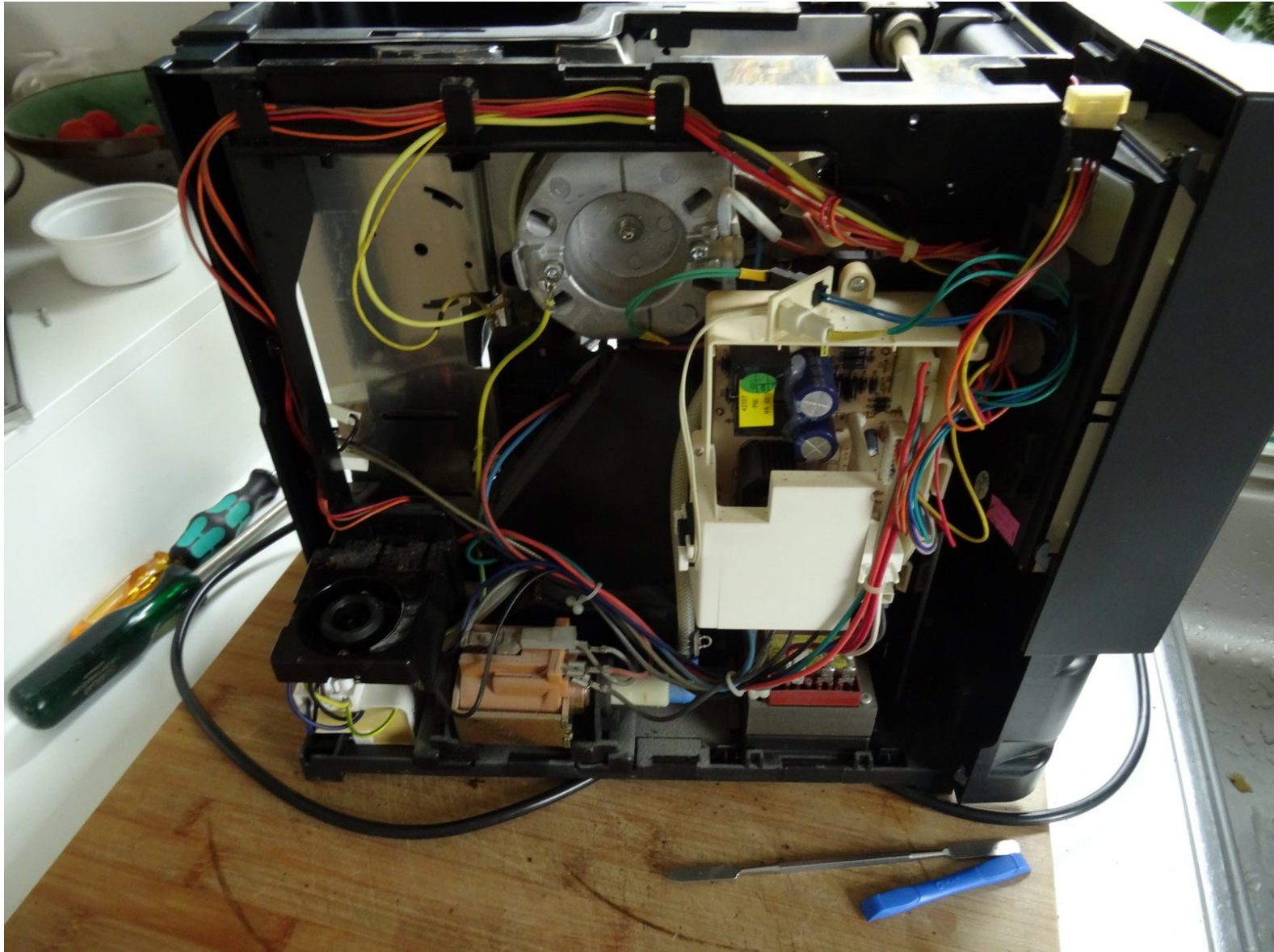




# Siemens Surpresso - Open Bosch Benvenuto

Written By: VauWeh



---

# INTRODUCTION

For many repairs, the device must be opened. This is described here.

---



## TOOLS:

- [TR10 Torx Security Screwdriver](#) (1)
  - [iFixit Opening Tool](#) (1)
-

## Step 1 — Siemens Surpresso - Bosch Benvenuto Brew Group Removal



**⚠ Never forget: Pull the power plug!**

- Remove all attachments such as water reservoir, coffee compartment lid, tester drawer.
- Remove all coffee beans from the bean hopper.
- Open the side flap.

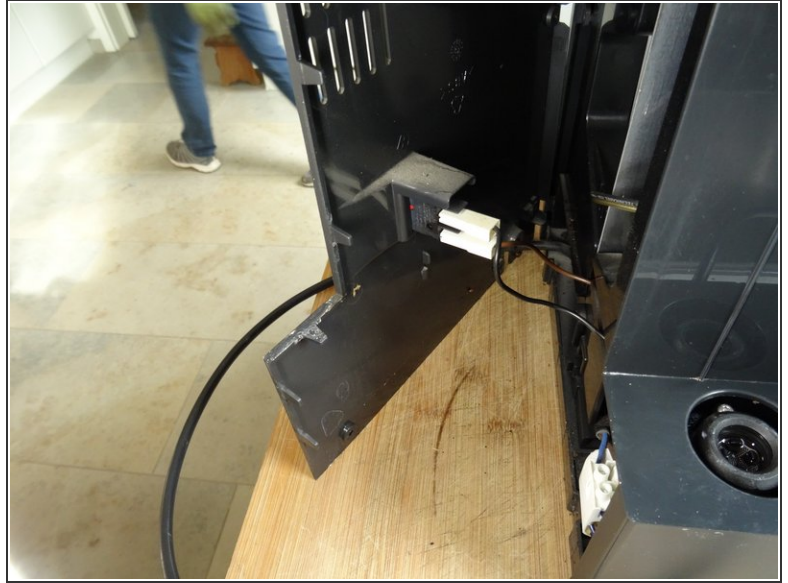
## Step 2



- Loosen the three rubber caps on the brew group.
  - Using a strong flat-blade screwdriver, adjust the three plastic slots underneath so that the "unlocked" position is indicated.
- i** Note: with the newer version of the brew group, only one lever needs to be flipped.
- Pull out the brew group. If it is stuck, pull firmly and evenly, but with feeling, preferably at the bottom right.

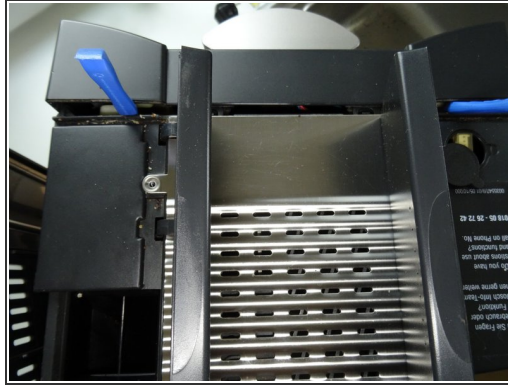


### Step 3 — Siemens Surpresso - Bosch Benvenuto back panel removal



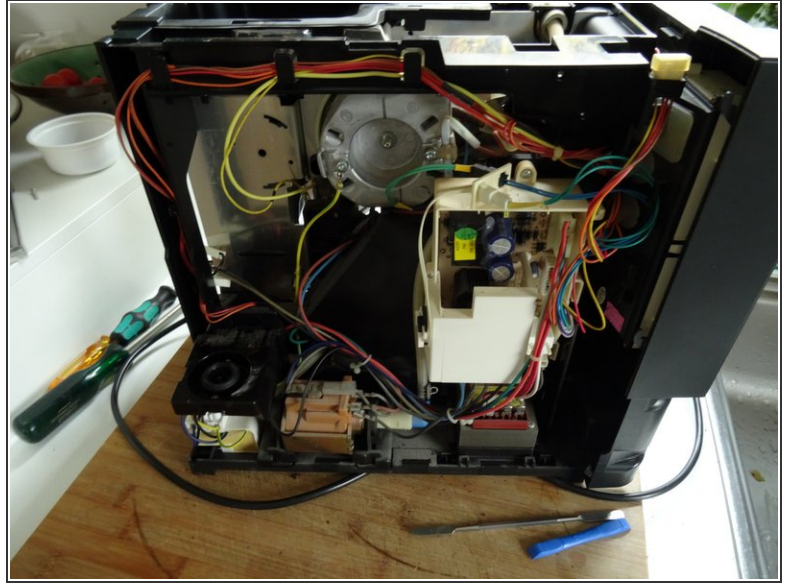
- Remove the seven Torx T10 screws on the rear panel.
- ☑ Do not remove the back panel completely yet, the power switch is still connected.
- Lift the back panel away.
- Remove the two flat plugs from the inside of the power switch.

## Step 4 — Siemens Surpresso - Bosch Benvenuto top cover removal



- i** The top cover is engaged with bayonets in several places. It must first be pushed back about 1 cm and then lifted away upwards.
- Grasp the powder compartment cover firmly and pull it upwards out of its hinges. Otherwise it will be in the way of the top cover.
  - Pull the top cover back about 1 cm. If it sticks in front, you can help a little with plastic levers.
  - Lift the top cover away from the top.

## Step 5 — Siemens Surpresso - Bosch Benvenuto remove left side panel



- ⓘ The side panel is attached to the front edge with three bayonets. It must therefore be lifted out upward.
- Grasp the side panel firmly at the rear edge and pull it backward and upward at the same time. It should come off quite easily.
- ☑ When reassembling, make sure that the bayonets on the front edge engage properly.

## Step 6 — Siemens Surpresso - Bosch Benvenuto remove right side panel



- ⓘ The side panel is attached to the front edge with three bayonets. It must therefore be lifted out upward.
- Grasp the side panel firmly at the rear edge and pull it backward and upward at the same time. It should come off quite easily.
- ★ When reassembling, make sure that the bayonets on the front edge engage properly.

Follow the steps in reverse order to reassemble your device