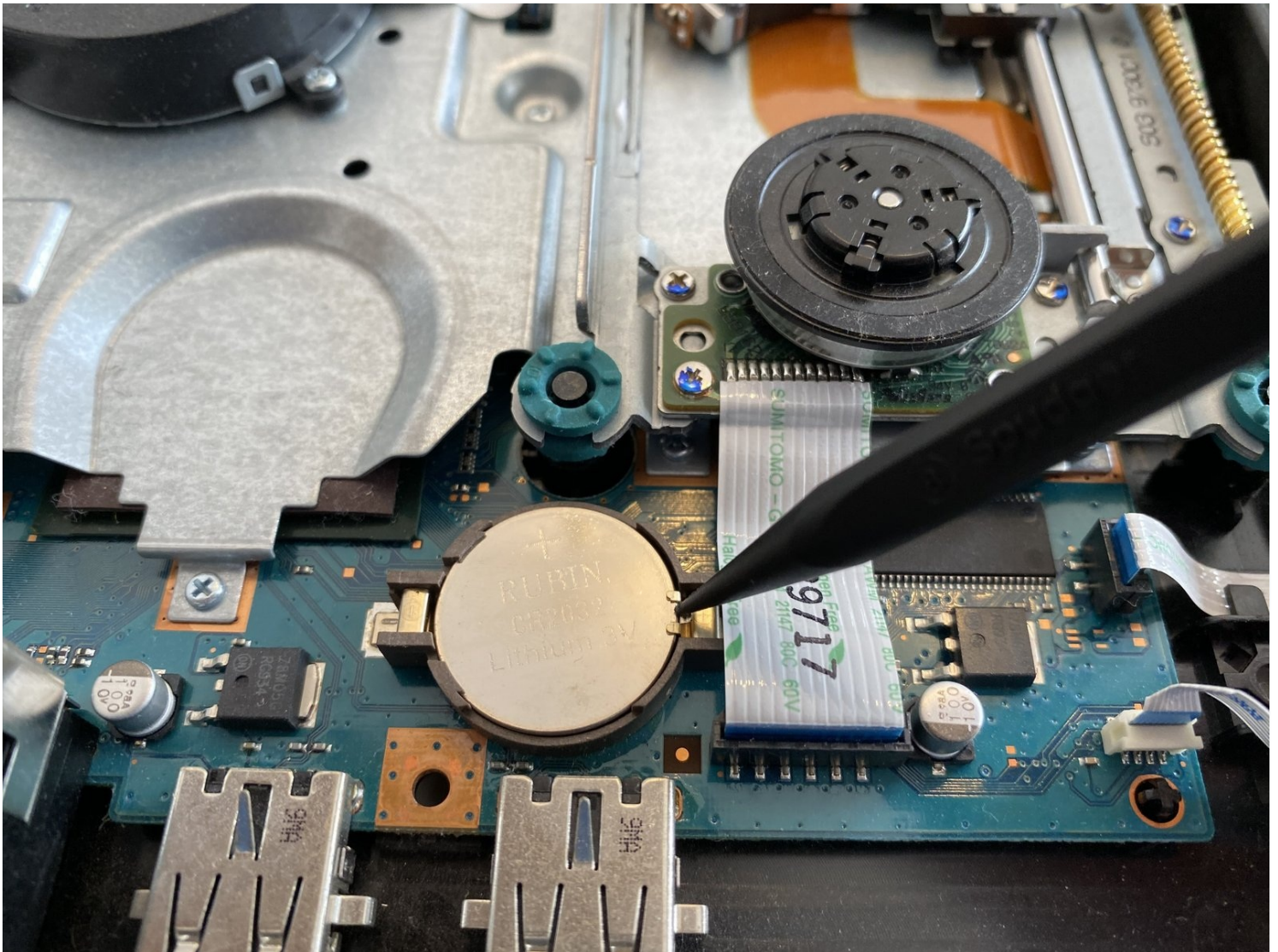




PlayStation 2 Slimline SCPH-900xx Clock Battery Replacement

After a few years, the clock battery in your...

Written By: MrJulian



INTRODUCTION

After a few years, the clock battery in your PlayStation 2 gets empty and the console can't save date and time anymore. This guide shows you how to replace the clock battery in your PS2.

Please note: This guide shows the European model (SCPH-9000**4**). Some models with other region codes may not have a clock battery.



TOOLS:

[Spudger](#) (1)
[Phillips #1 Screwdriver](#) (1)
[iFixit Opening Picks \(Set of 6\)](#) (1)



PARTS:

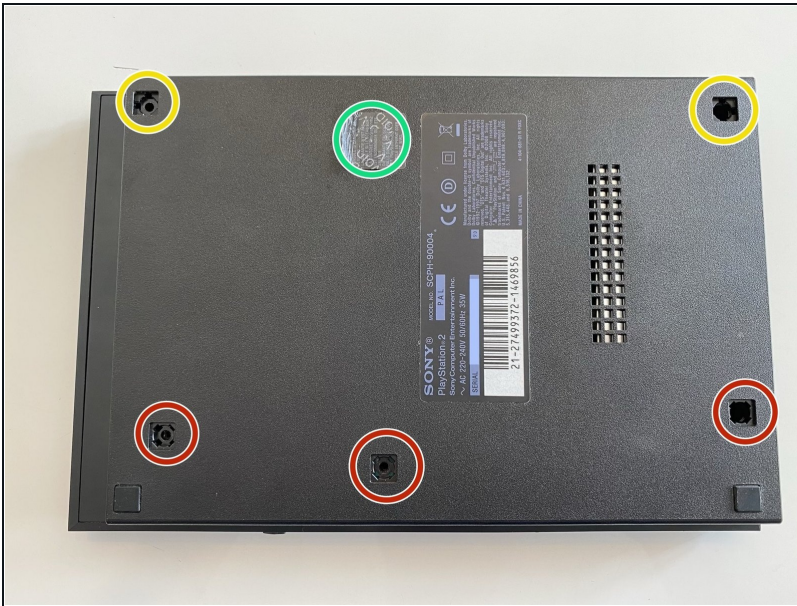
[CR2032 Lithium Battery](#) (1)

Step 1 — Lower Smart Plate



- Turn off your PlayStation 2 and remove the disc and Memory Card.
- Turn over the PlayStation 2 and put it on a soft surface (e.g. a towel).

Step 2



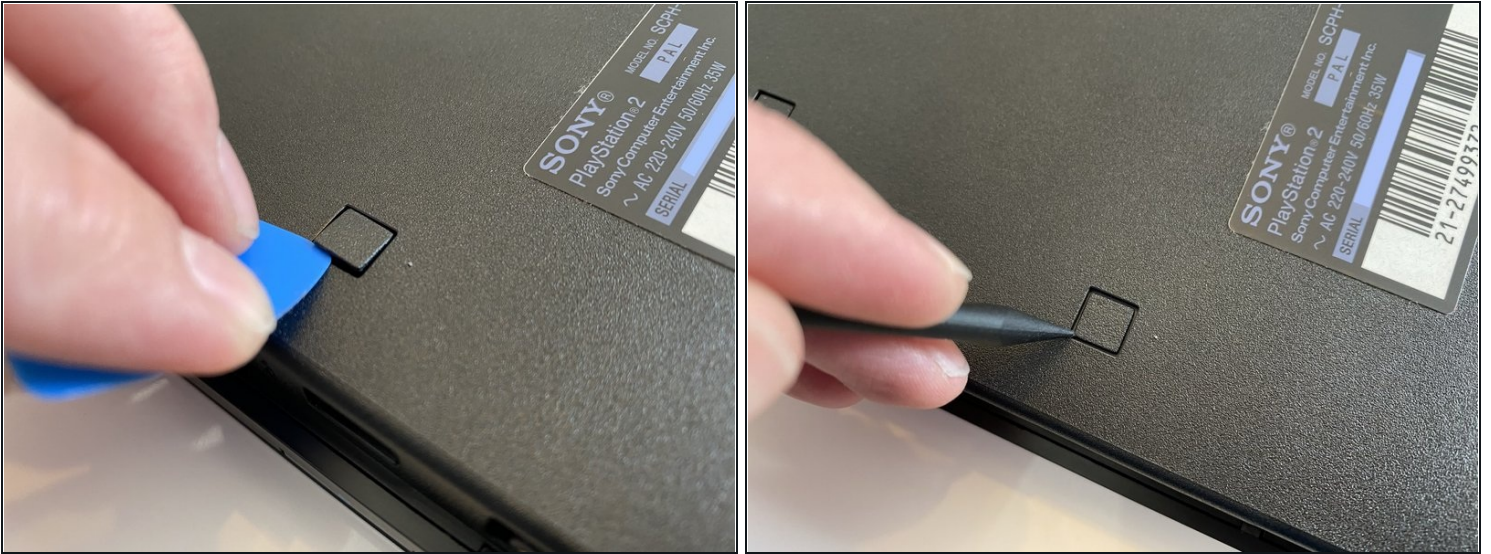
- Locate the six covers.
- Two are located underneath the feet.
- One cover is located underneath the Void sticker.

Step 3



- Remove the Void sticker with a Spudger and some cleaning alcohol
- ⚠ Removing the Void sticker will void the warranty of your device!
- ⓘ Some versions of that console maybe don't have the sticker or it's relocated.

Step 4



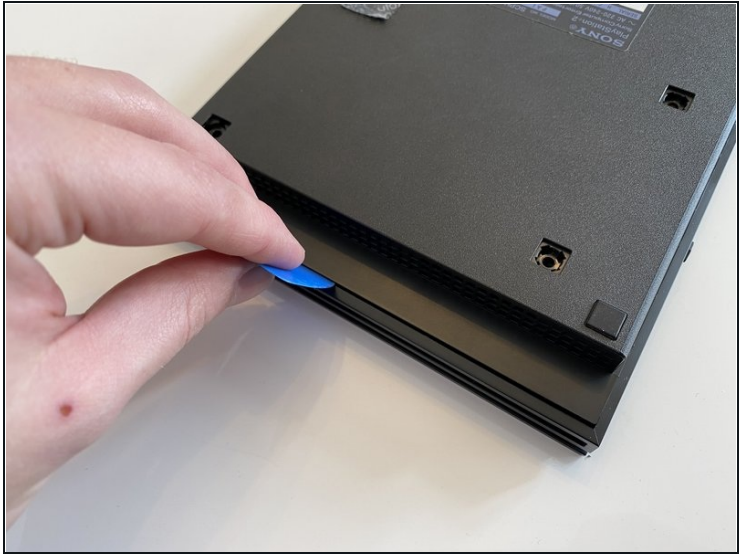
- Remove the covers by using either a Spudger, Opening Picks or your fingernail.

Step 5



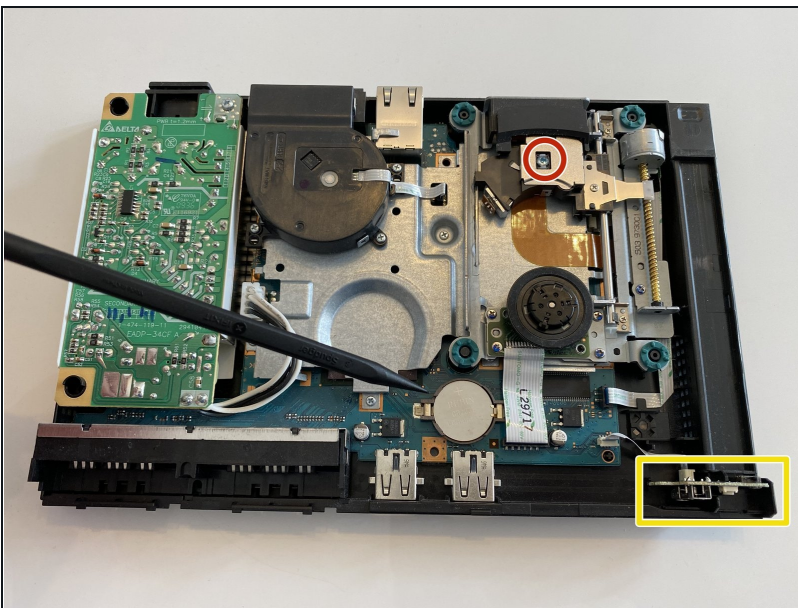
- Remove the six Phillips #1 screws with a screwdriver.
- The screws on the right are a bit deeper inside the shell as like the rest but are the same size.

Step 6



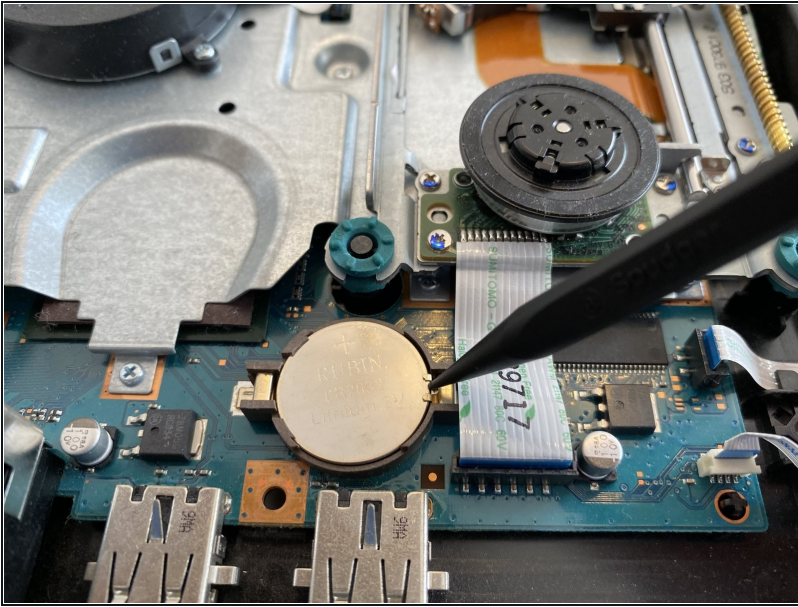
- Separate the clips at the front and the overhanging side from their mounting using a Prying Tool.
- Separate the two halves.

Step 7 — Clock Battery



- The clock battery is located under the drive.
- ⚠ Do not touch the Laser (red circle)! Otherwise it can't read the disc anymore!
- Make sure that the sensor array for the on/off switch sits correctly when reassembling the device.
- ⓘ This picture shows the European model (SCPH-90004). Some models with other region codes may not have a clock battery.

Step 8



- Pull away the metal mounting on the right to remove the old button cell.
- Replace the old button cell/clock battery with a new button cell type *CR 2032* with 3V of voltage.

To reassemble your device, follow the above steps in reverse order.