



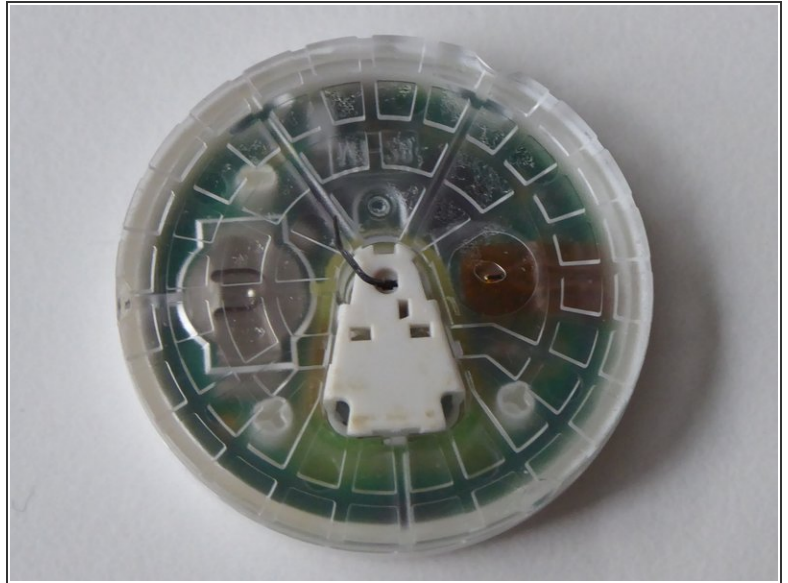
# FreeStyle Libre 2 Sensor Teardown

Disassembling of the sensor and looking at the interior

Written By: Nathalie

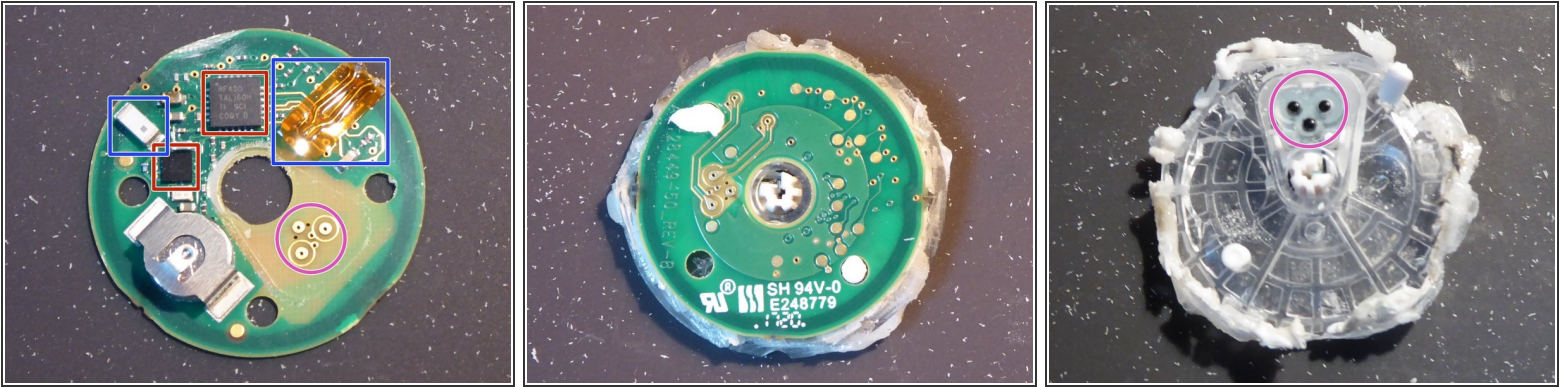


## Step 1 — FreeStyle Libre 2 Sensor Teardown



- Once you rip off the sticking plaster (you can simply do this with your hand), you can see the front of the sensor from one side. A white cover with the hub for the needle in the center. On the other side, one can already see the board under the transparent plastic layer. *Be careful with the needle!*

## Step 2



- The edge can be ground with a Dremel rotary tool. With the help of some pliers, one can peel off the plastic and with a bit of fine feeling one can take out the board.
- One can see the contacts for the needle on the transparent plastic. They are also clearly visible on the board.
- On the backside of the board, one can just see some unlabeled contacts.
- There are two antennas next to the big round battery. One is made of ceramics for Bluetooth and another one wrapped in Kapton tape that is probably used for the NFC transmission.
- Two chips form the core. The bigger one is a RF430, and it is responsible for RFID. The smaller one is an EM9304 Bluetooth chip.