



# Moodo Smart Aroma Diffuser Teardown

Moodo Smart Aroma Diffuser Teardown

Written By: Markus



---

## INTRODUCTION

Having a look into the Moodo Smart Aroma Diffuser.  
You can also use this as a guide to replace a fan.



### TOOLS:

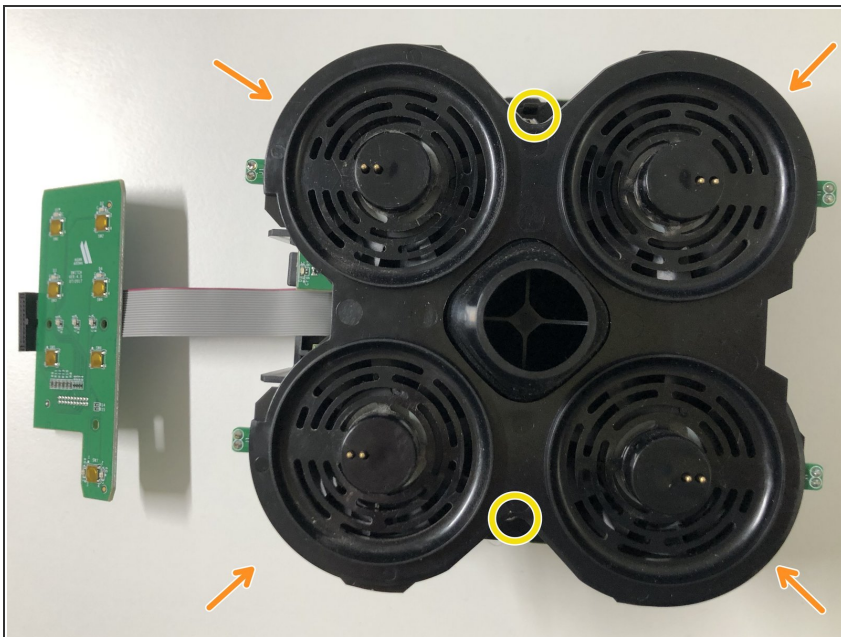
- [Phillips #1 Screwdriver](#) (1)
-

## Step 1 — Device



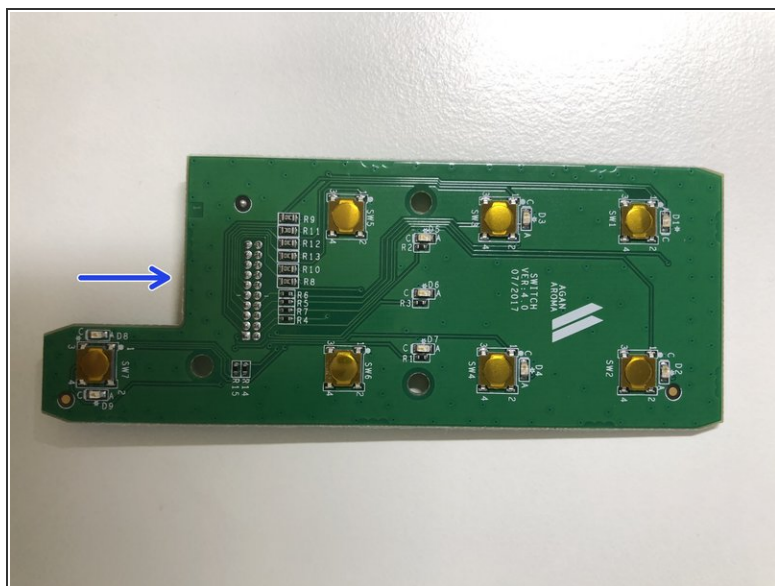
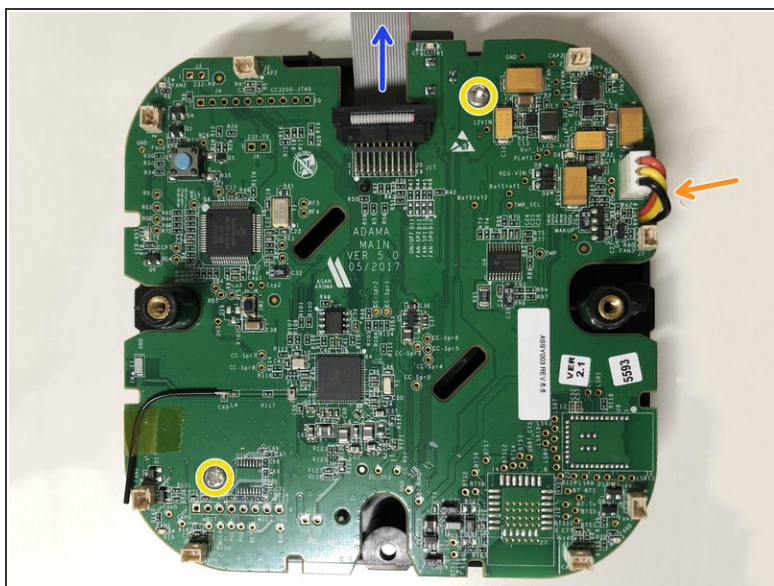
- The device can be opened by removing the 4 Philips screws visible from the bottom

## Step 2 — Fan assembly



- The fan and air guidance assembly is attached to the main PCB with 2 screws.
- Each fan has one connector for power and one for the pod sensor - these need to be disconnected from the PCB before removing the fan assembly. If you want to replace a fan, you will need to unhook the sensor cables from the sides.
- Fans used are: **1604KL-01W-B39-B00** NMB Technologies DC Fans DC Axial Fan, 40x10mm, 5VDC, 4.2CFM

## Step 3 — PCB



- The main PCB connects to the control PCB with a ribbon cable.
- It can be removed with 2 screws.
- The 2 cell battery pack is located under the main PCB.