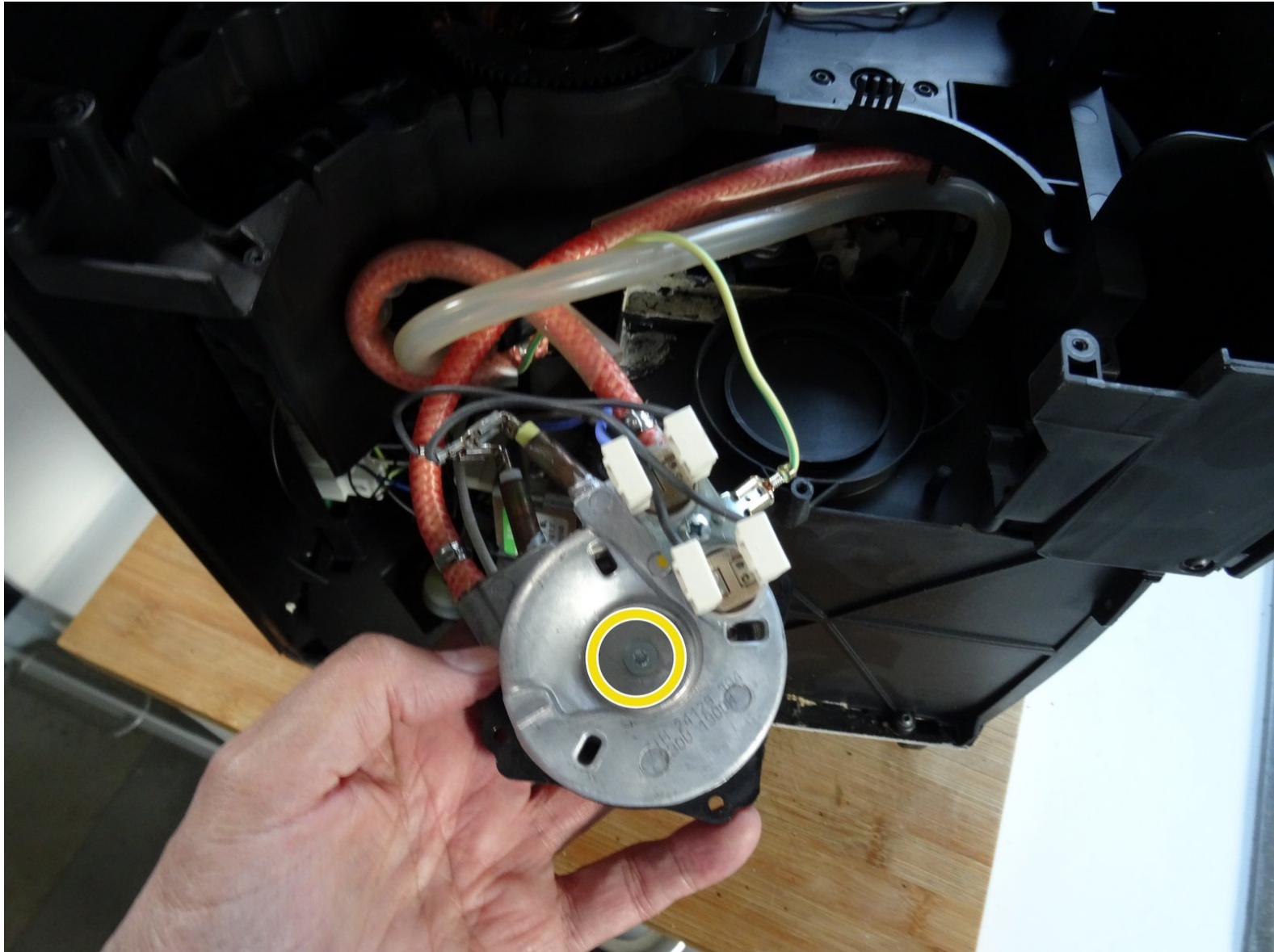




Replace Saeco Moltio heater

Written By: VauWeh



INTRODUCTION

For this repair, the device must first be opened. Use the appropriate guide.



TOOLS:

- [TR10 Torx Security Screwdriver](#) (1)
- [T20 Torx Screwdriver Bit](#) (1)
- [Cutting Plier](#) (1)
- [iFixit Opening Tool](#) (1)
- [Metal Spudger](#) (1)



PARTS:

- [New Item](#) (1)
- [Two 9 mm Hose Clamps](#) (1)

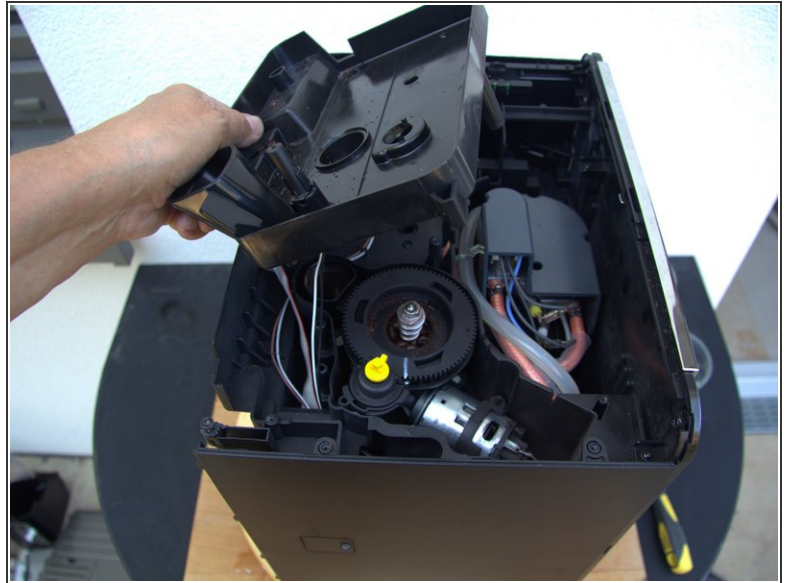
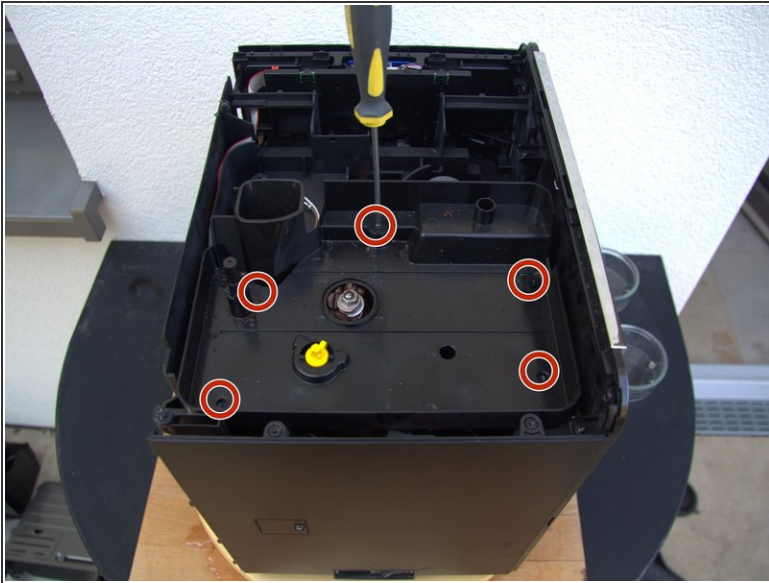
Step 1 — Decorative frame made of metal or plastic?



- First check which model you have in front of you: is the decorative frame made of chromed metal (image 1) or made of metalized plastic (image 2). In the first case use this guide, in the second case use this guide. Then come back here.

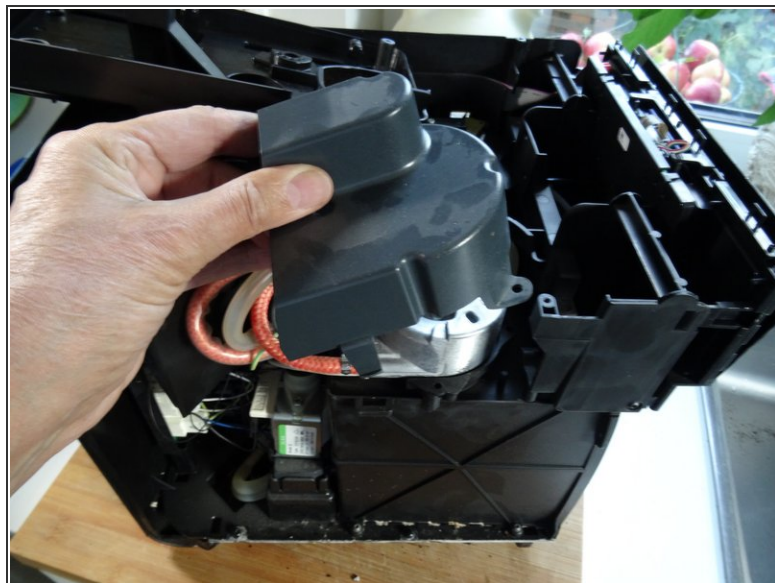
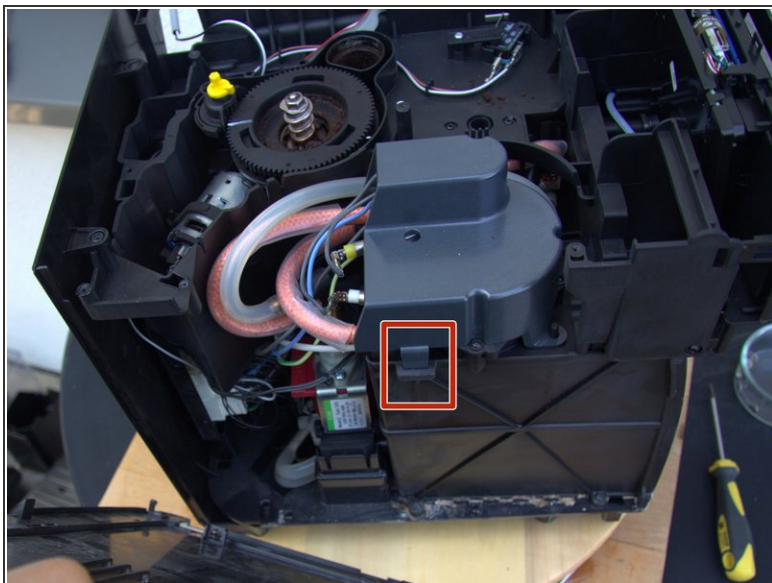
⚠ Also make sure that the power plug is unplugged.

Step 2 — Replace water heater



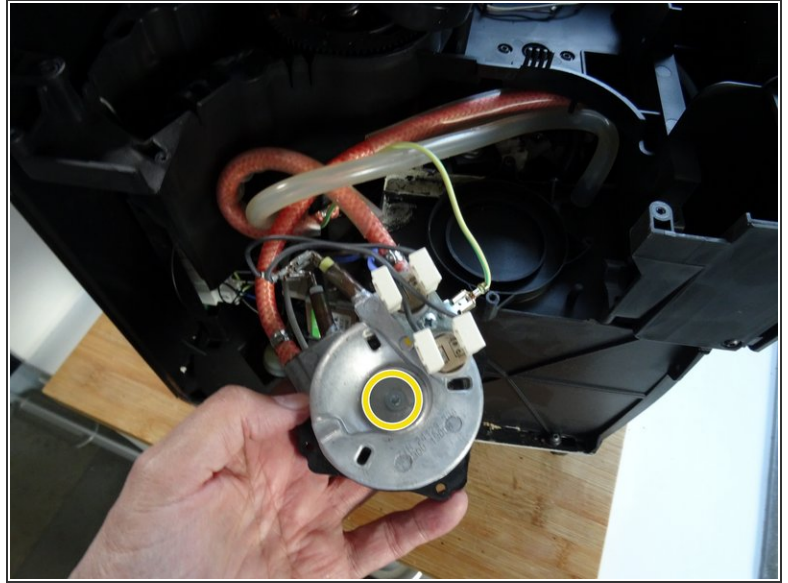
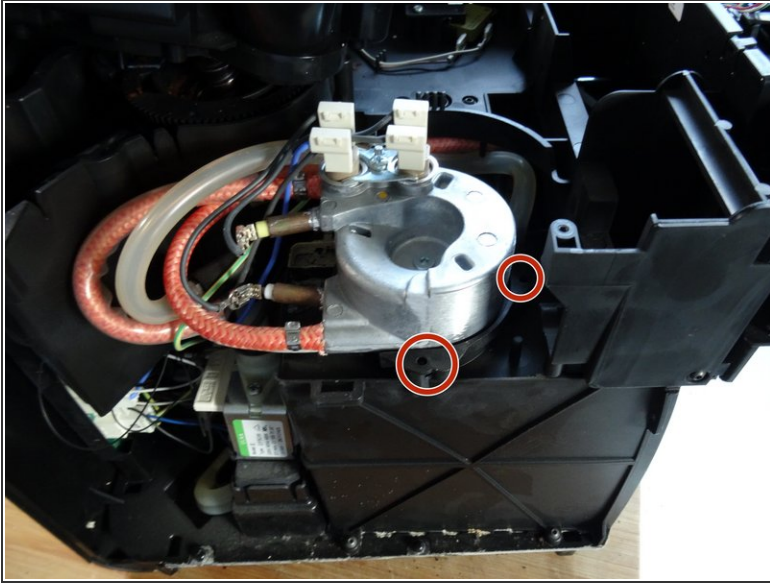
- If the support plate for the exchangeable bean container has already been removed, you can skip this step.
- The carrier plate is attached with five Torx T10 screws. turn them out.
- Lift the carrier plate up and place it on the device.
- Don't lift the plate all the way out yet. It is still connected to a sensor cable. The cable does not necessarily have to be detached.

Step 3



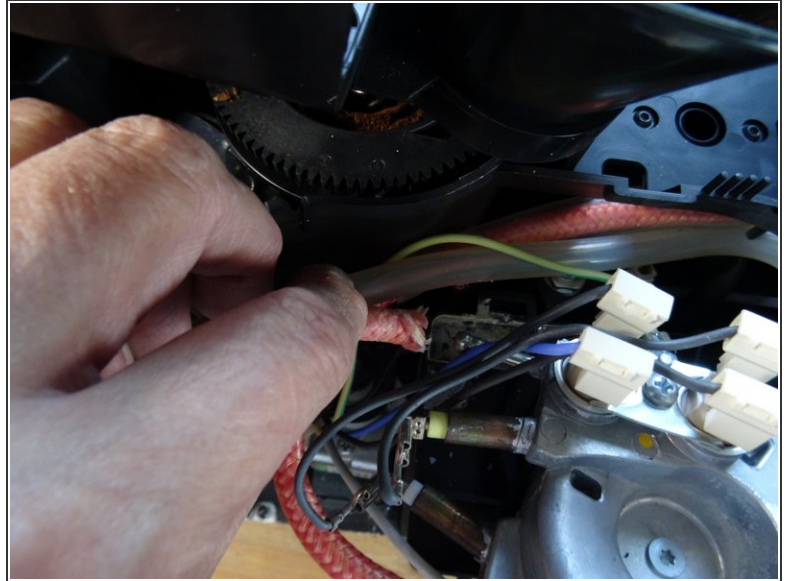
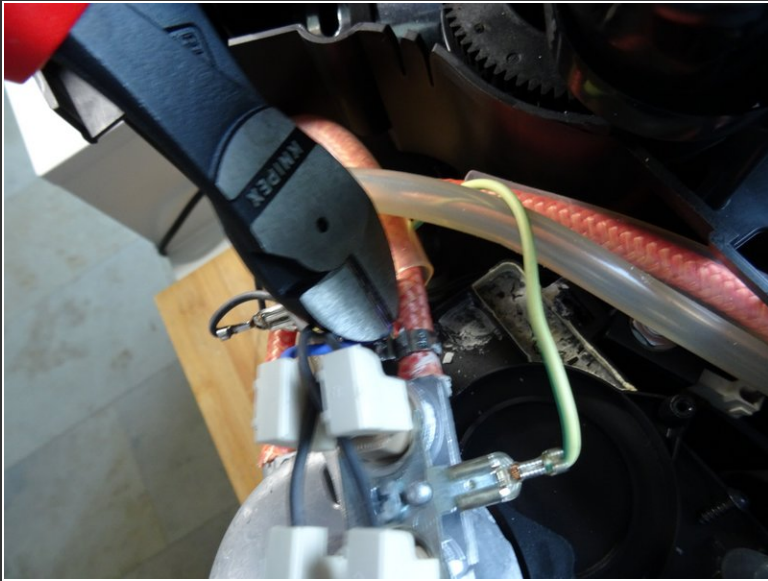
- The instantaneous water heater is now clearly visible. It is still hidden under a gray plastic cover. The cover is attached with two latches. The one on the back is a bit difficult to access.
- Press down on the tabs with your finger and lift off the cover.

Step 4



- The holder of the instantaneous water heater is fastened with three Torx T10 screws. (The third is here covered by the heater). remove those.
- The heater is attached to the support plate with a Torx T20 screw. remove that one.

Step 5



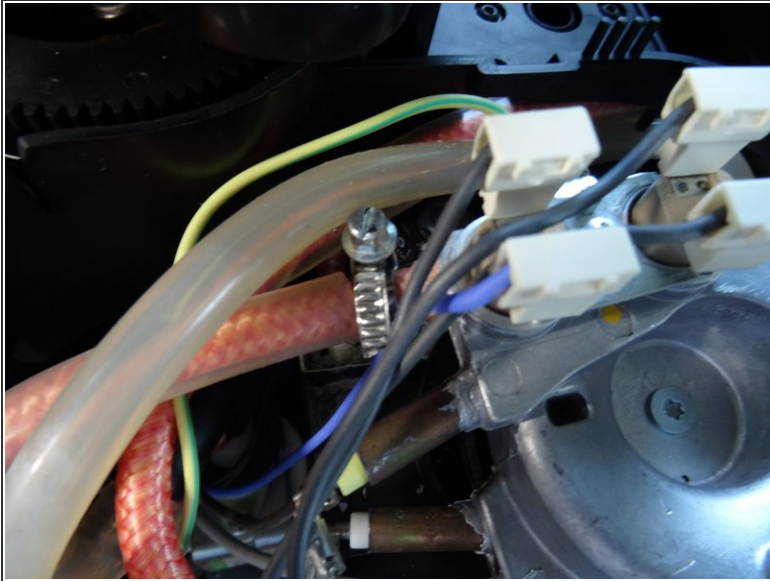
- The Oetiker clamps on the hose connections must be cut open with side cutters.
- Then pull off the hoses.

Step 6



- Remove the Phillips #2 screw on the thermal switch holder.
- Lift off the holder and thermal switches.
- Disconnect the spade connectors on the heater connections.
- Apply thermal paste to the replacement part and attach the holder and thermal switches.
- Plug in the flat plugs for the heater.

Step 7



- When reassembling, the Oetiker clamps can be replaced with a 9mm hose clamp.

Follow the steps in reverse order to reassemble your device.