



BlackBerry 7280 Inner Keyboard Replacement

This guide provides the steps to replace the inner keyboard module for the BlackBerry 7280.

Written By: Andrew Johnston



INTRODUCTION

The inner keyboard is the internal part of the device's keyboard. This part provides connections between the rubber keys and the device's motherboard. This guide demonstrates how to remove the inner keyboard after removing the outer case.



TOOLS:

- [T6 Torx Screwdriver](#) (1)
 - [iFixit Opening Tools](#) (1)
-

Step 1 — Battery



- With your thumb press down on the locking- button on the back of the BlackBerry 7280.
- Slide the battery cover off the device.

Step 2



- Remove the lithium-ion battery from the back of the device using your index finger.

Step 3 — SIM Card



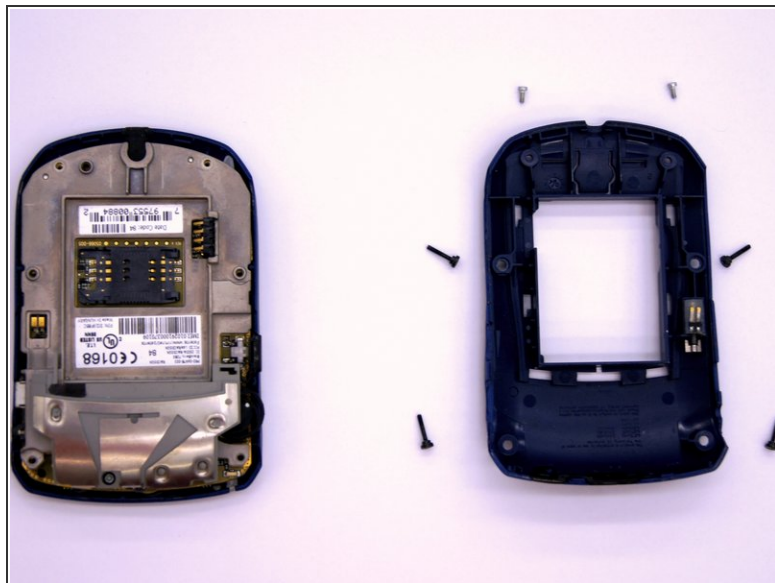
- Hold the device with both hands.
- Lift the SIM card holder using your thumb and index finger.
- Remove the SIM card from the device.

Step 4 — Back Case



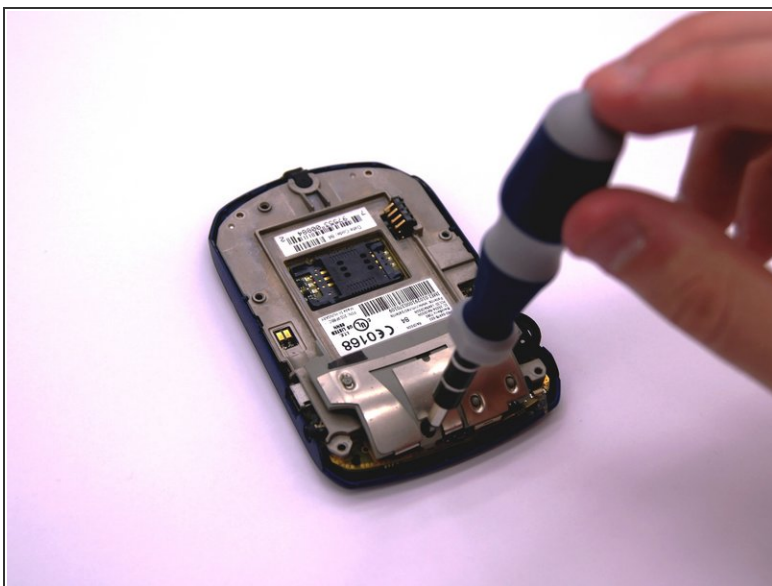
- Using a Torx T6 screwdriver, remove all six 1/8 inch screws (marked in red) from the back case. Set screws aside.
- ⓘ The SIM card has been removed here to prevent damage to the card. This is recommended, but not not required.

Step 5



- Use the plastic opening tool to pry the back case away from the front case.

Step 6 — Front Case



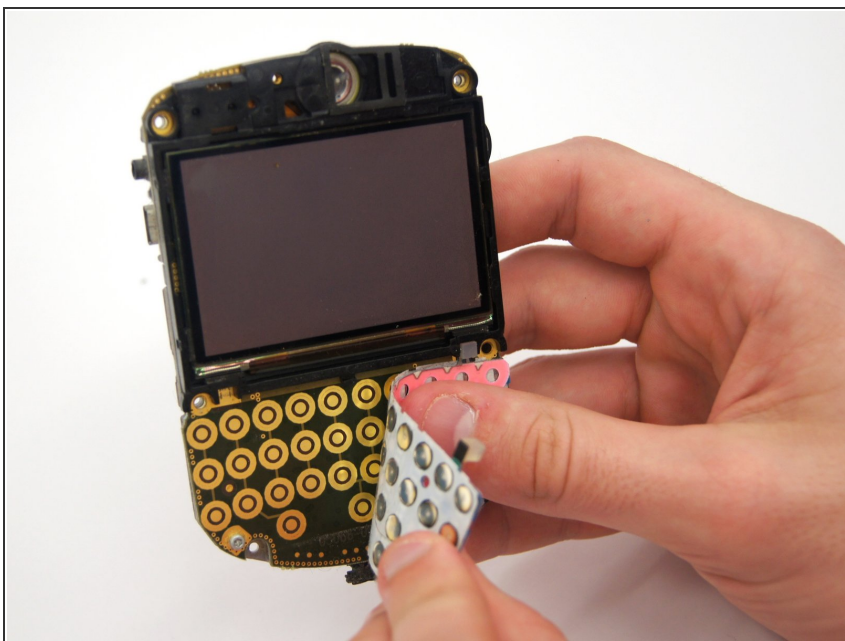
- Using a Torx T6 screwdriver, remove the lone 1/8 inch screw that holds the upper metal bracket onto the larger metal bracket. Set aside the screw and the bracket.

Step 7



- Remove the front plastic case from the metal bracket.

Step 8 — Inner Keyboard



- To remove the inner keyboard, simply peel it off of the logic board as shown.

To reassemble your device, follow these instructions in reverse order.