



# Samsung Galaxy Watch3 Display Replacement

How to replace a cracked or broken screen on your Samsung Galaxy Watch3.

Written By: Tobias Isakeit



# INTRODUCTION

Use this guide to replace a cracked or broken screen on your Samsung Galaxy Watch3.



## TOOLS:

- [iFixit Opening Tool](#) (1)
- [Tri-point Y00 Screwdriver](#) (1)
- [Spudger](#) (1)



## PARTS:

- [Samsung Galaxy Watch3 \(41mm\) Screen](#) (1)
- [Samsung Galaxy Watch3 \(45mm\) Screen and Frame](#) (1)

## Step 1 — Unfasten the back cover screws



- Before starting repairs, take your watch off the charger and power it down.
- Use a Tri-point Y00 driver to unfasten the four screws on the back of the watch.
- ⓘ Don't worry about removing the screws, they will stay in place in the back cover.

## Step 2 — Wedge open the back cover



- Insert an opening tool between the back cover and the metal housing.
- Twist the opening tool to create a wider gap.

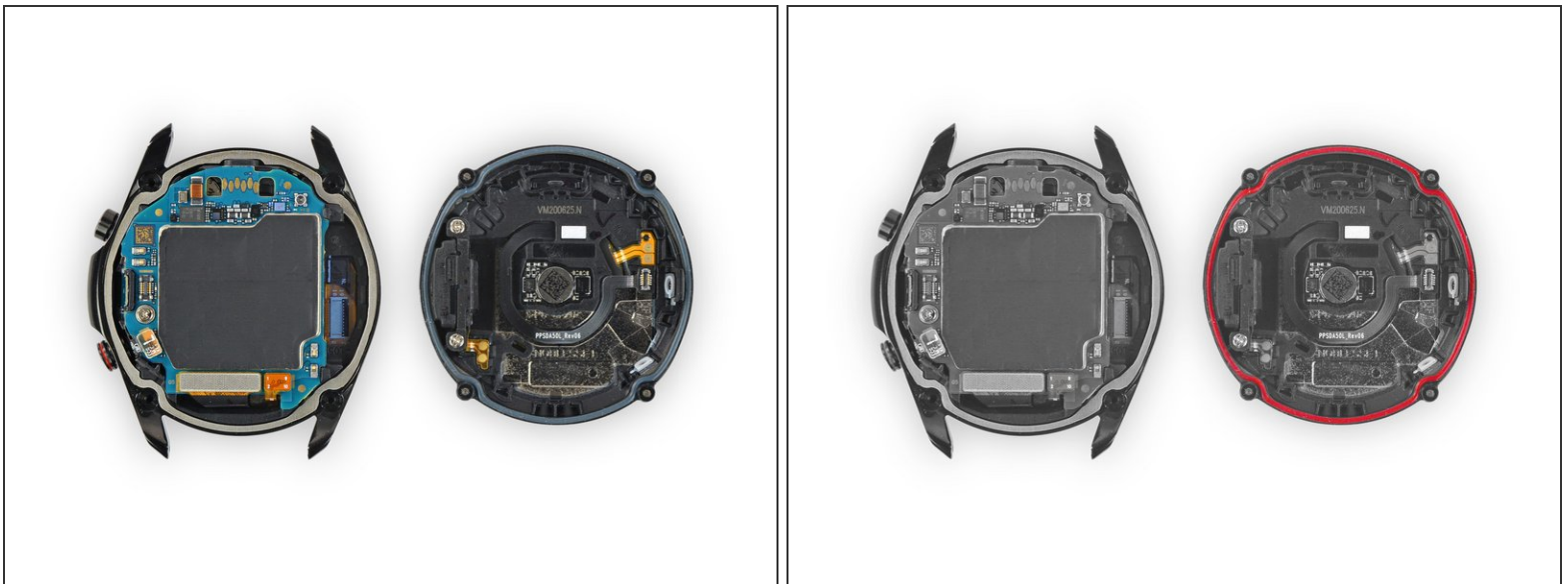
**⚠ Don't fully remove the back cover just yet. The sensor flex cable is still connected to the motherboard.**

### Step 3 — Disconnect the sensor flex cable



- Lay the watch face down.
- Carefully lift the back cover up from the edge with the buttons to access the sensor connector.
- Use the flat end of a spudger to pry up and disconnect the sensor flex cable from the motherboard.

### Step 4 — Remove the back cover



- Remove the back cover.
- ☑ Make sure the rubber gasket (marked red) is undamaged. If damaged replace it with a new one during reassembly to maintain proper water resistance.

## Step 5 — Unplug the display connector



- Use the flat end of a spudger to pry up and disconnect the display flex cable from the motherboard.



## Step 6 — Loosen the core assembly



- i** The core's plastic frame fits tightly within the watch's metal housing.
- Place the corner of the flat end of a spudger in the small opening of the barometric sensor, on the opposite side of the display connector.
  - Twist and tilt the spudger to lever the core assembly out of the metal housing.

## Step 7 — Remove the core assembly



- Carefully thread the display flex cable through the gap on the core's plastic frame.
- Remove the core assembly.

## Step 8 — Push out the display



**⚠ If your display is cracked, keep glass shards contained by applying a strip of tape over the glass."**

- Use your finger to steadily push the display down through the watch's metal housing to loosen the adhesive.
- ① Lightly heating the display with a hair dryer or [iOpener](#) can help soften the adhesive.
- Remove the display.

If possible, turn on your device and test your repair before reassembly.

To reassemble your device, follow these instructions in reverse order.

Repair didn't go as planned? Try some [basic troubleshooting](#), or ask our [Answers community](#) for help.

Take your e-waste to an [R2 or e-Stewards certified recycler](#).