



Nintendo Switch Lite Left Joystick Replacement

Follow this guide to replace the left joystick...

Written By: Craig Lloyd



INTRODUCTION

Follow this guide to replace the left joystick in your Nintendo Switch Lite. Replacing the joystick will fix the notorious “Joy-Con drift” issue. (Follow [this guide to replace the right joystick in your Nintendo Switch Lite](#)).

The Switch Lite uses JIS screws, but you can use a Phillips screwdriver in a pinch. Be very careful not to strip the screws. iFixit's Phillips bits are designed to be cross-compatible with JIS-style screws.

Note: This procedure requires disconnecting the battery for safety. In order to do this, the shield plate must be removed. The shield plate is bonded to the heat sink with thermal paste, which will need to be cleaned off and reapplied before reinstalling the shield plate.

TOOLS:


[Tri-point Y00 Screwdriver](#) (1)
[Phillips #000 Screwdriver](#) (1)
[iFixit Opening Tool](#) (1)
[Spudger](#) (1)
[Microfiber Cleaning Cloths](#) (1)
[Isopropyl Alcohol](#) (1)
[Thermal Paste](#) (1)
[Tweezers](#) (1)

PARTS:

[Nintendo Switch Joy-Con/Switch Lite - Gulikit Hall Effect Joystick](#) (1)
[Nintendo Switch Joy-Con/Switch Lite Joystick](#) (1)

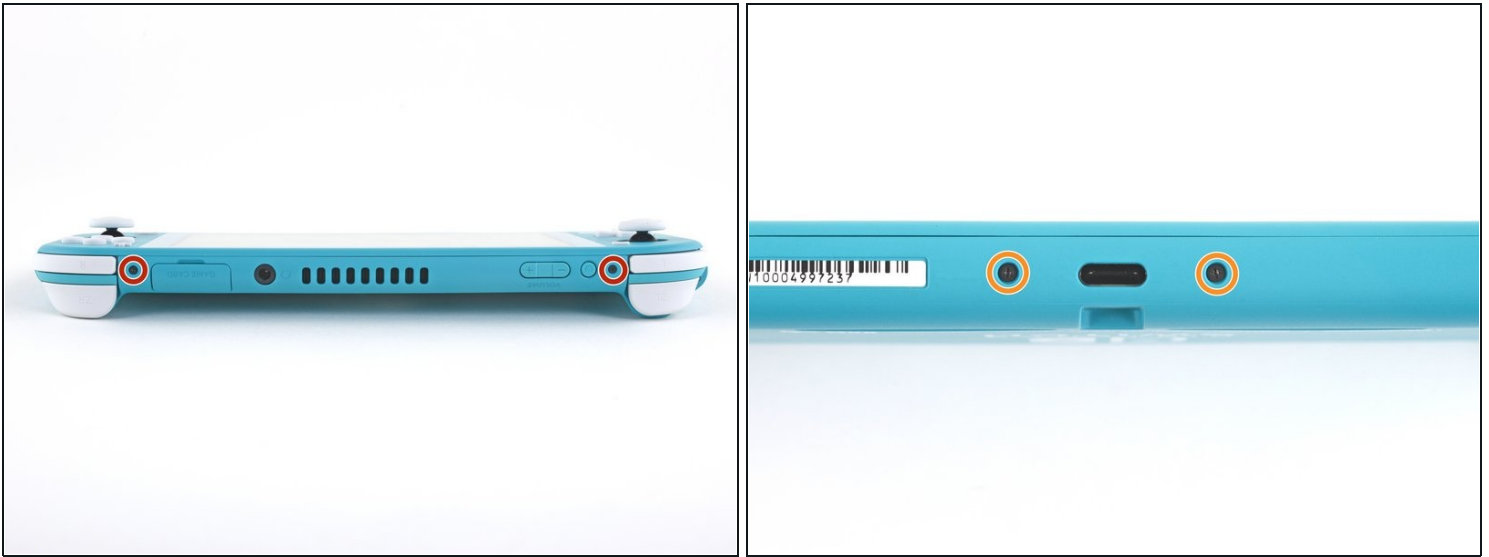
Step 1 — Remove the back panel screws



 Before beginning this repair, make sure that the device is completely turned off.

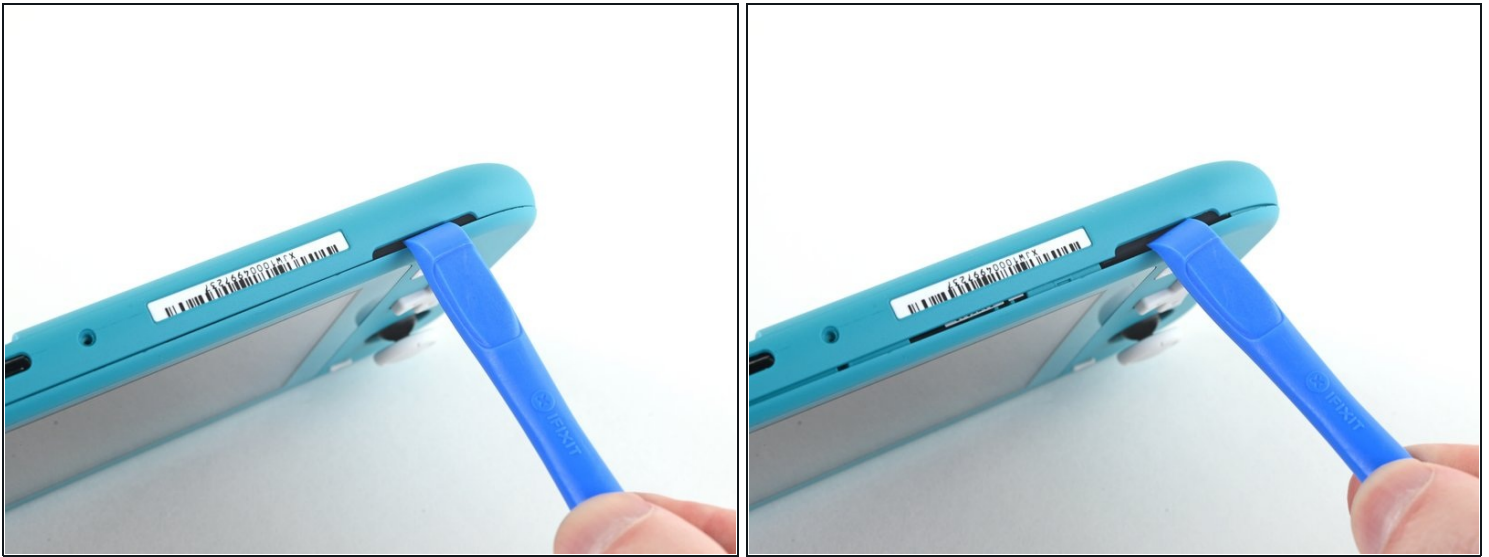
- Use a Y00 screwdriver to remove the four 6.3 mm-long screws securing the back panel.
- ⓘ Throughout this repair, [keep track of each screw](#) and make sure it goes back exactly where it came from.

Step 2 — Remove the top and bottom back panel screws



- Use a JIS 000 driver or an official iFixit PH 000 driver to remove the following screws securing the back panel:
 - Two 3.6 mm-long screws on the top of the device
 - Two 3.6 mm-long screws on the bottom of the device
- ⓘ To prevent these tight screws from [stripping](#), apply firm downward force, work slowly and try a different screwdriver if the screws won't come out.

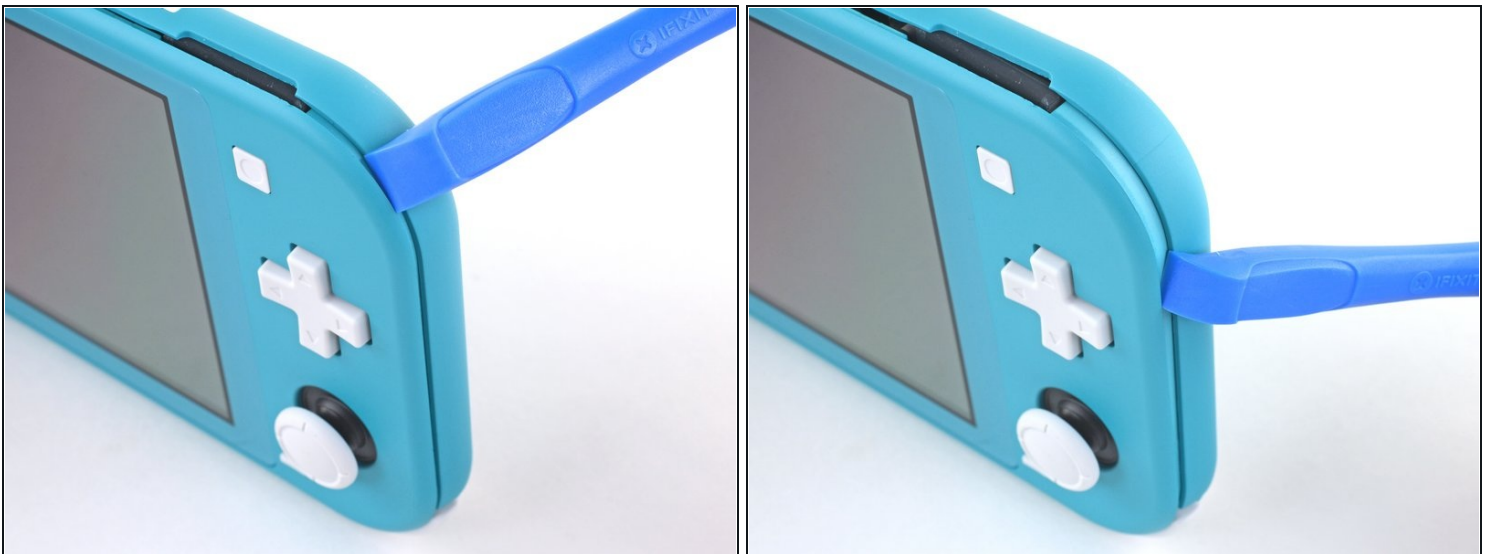
Step 3 — Release the clips securing the back panel



- Insert an opening tool into the left speaker grille on the bottom of the device.
- Twist the opening tool to release the clips securing the back panel.

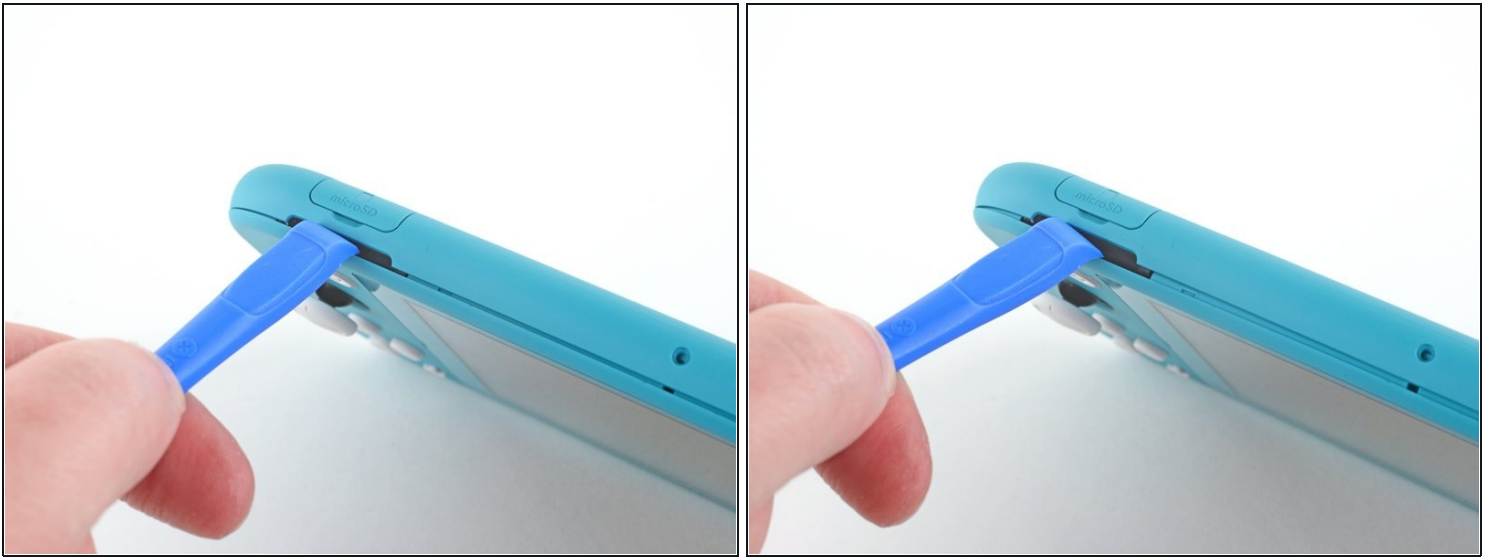
⚠ Avoid inserting the opening tool further than required to prevent damage to the speaker module.

Step 4 — Continue releasing the clips around the device



- Slide the opening tool around the bottom-left corner to release the clips on the left side of the device.

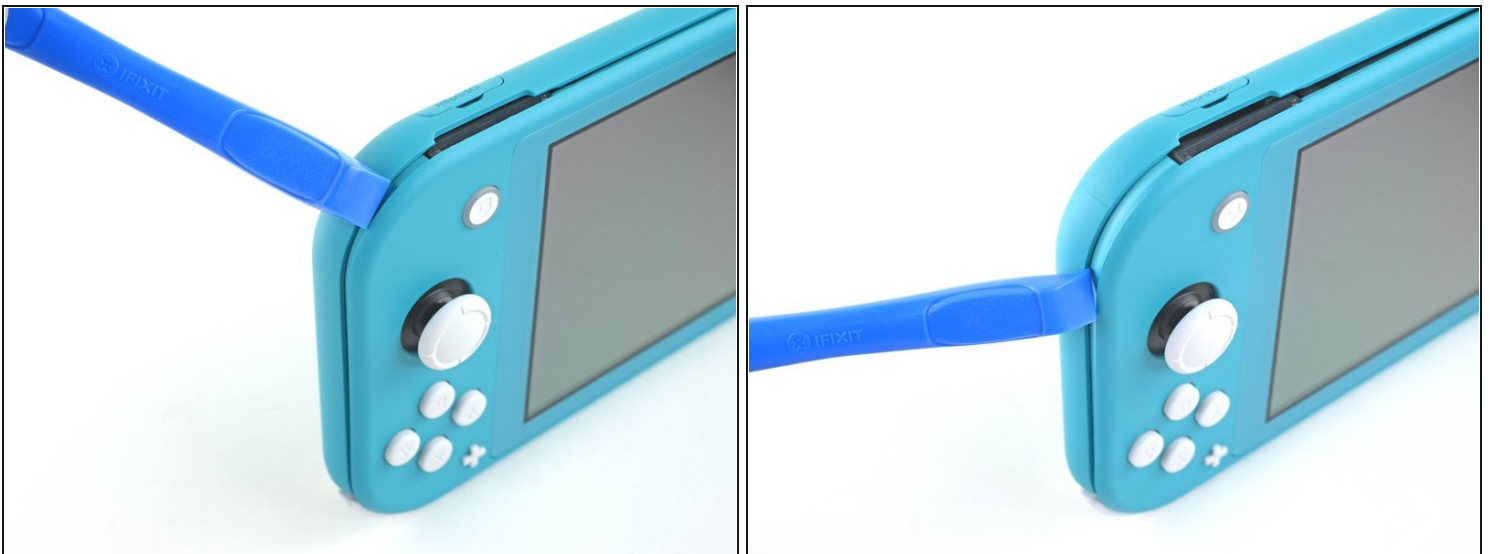
Step 5 — Twist to release the clips



- Insert an opening tool into the right speaker grille on the bottom of the device.
- Twist the opening tool to release the clips.

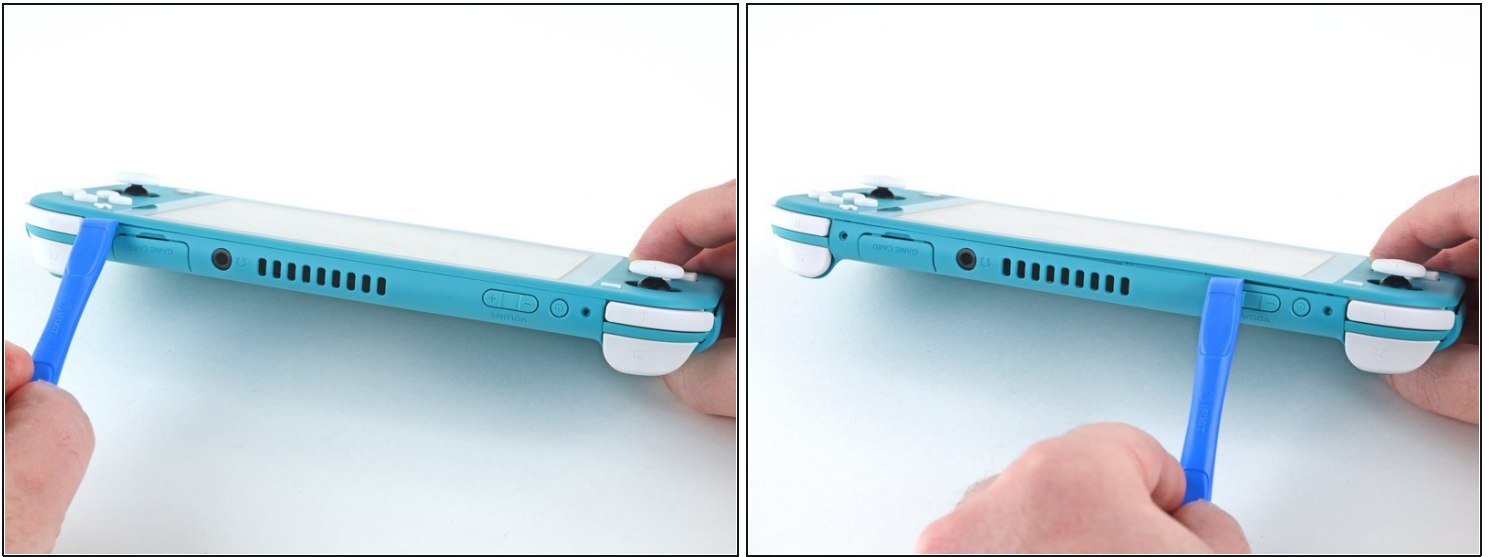
⚠ Avoid inserting the opening tool further than required to prevent damage to the speaker module.

Step 6 — Slide and pry around the corners



- Slide and pry the opening tool around the bottom-right corner to release the clips on the right side of the device.

Step 7



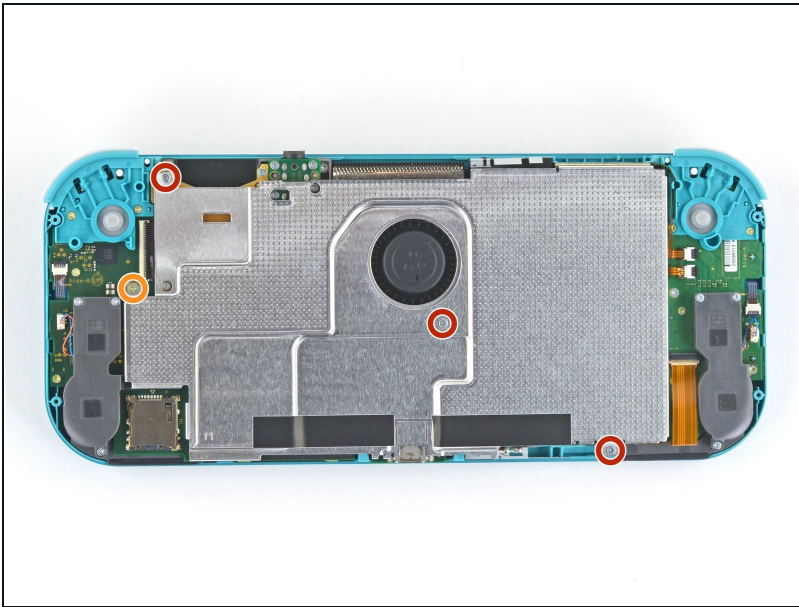
- Continue sliding and prying the opening tool along the gap on the top of the device to release the clips.

Step 8 — Remove the back panel



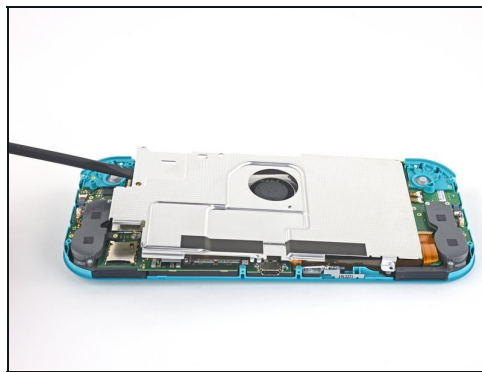
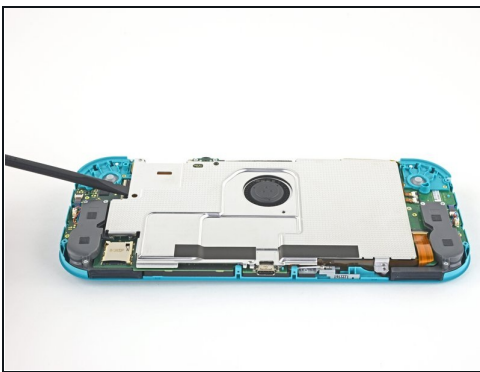
- Lift the bottom edge of the back panel, opening it like a book.
- Remove the back panel.

Step 9 — Remove the shield plate



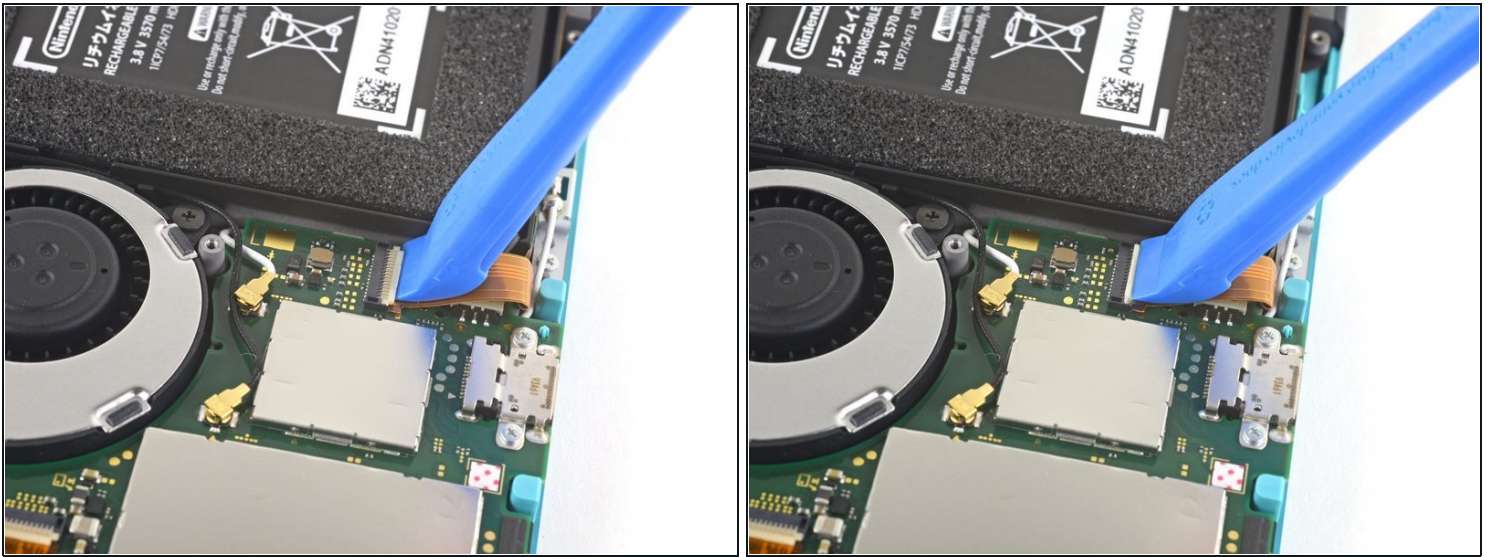
- Use a JIS 000 driver or an official iFixit PH 000 driver to remove the following four screws:
 - Three 3.1 mm screws
 - One 4.5 mm screw

Step 10



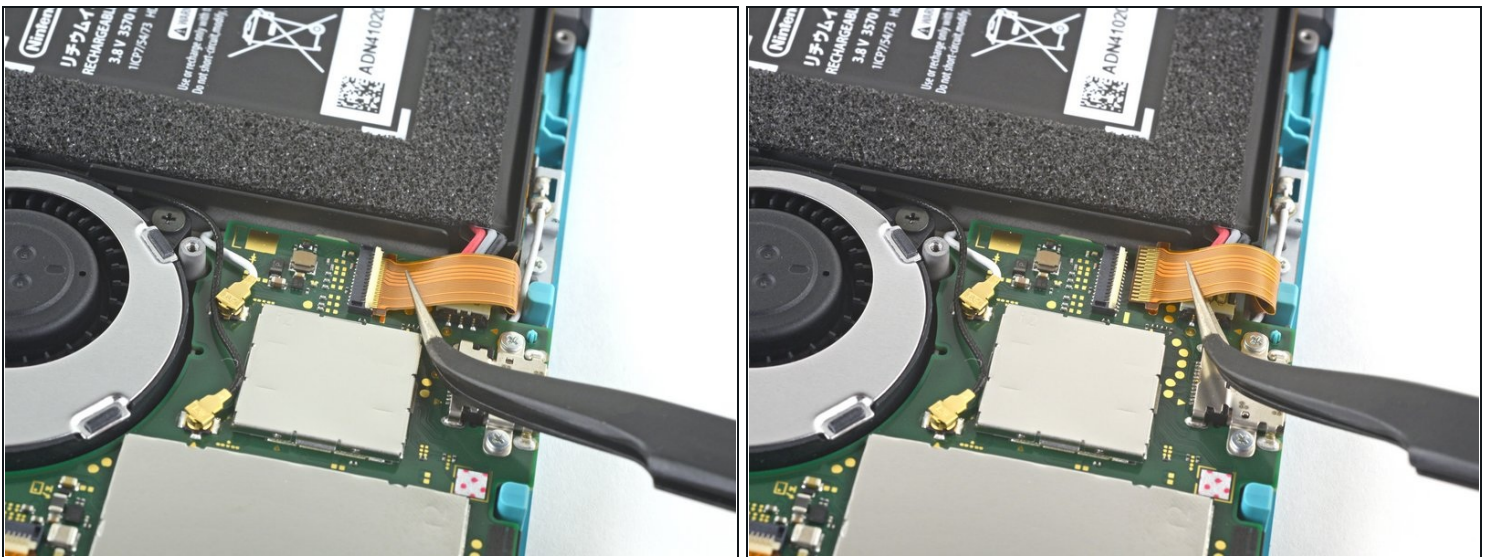
- Use a spudger or your fingers to lift the shield plate up and out of the device.
 - ⓘ You may feel a bit of resistance. This is normal, since the shield plate is slightly bonded to the heat sink with thermal paste.
- Remove the shield plate.
 - ☑ Clean off the old thermal paste from the shield plate and heat sink using isopropyl alcohol and a microfiber cloth. [Apply new thermal paste](#) to the heat sink before reassembly.

Step 11 — Disconnect the battery



- Use an opening tool or your fingernail to flip up the small, hinged locking flap on the motherboard interconnect cable's [ZIF connector](#).

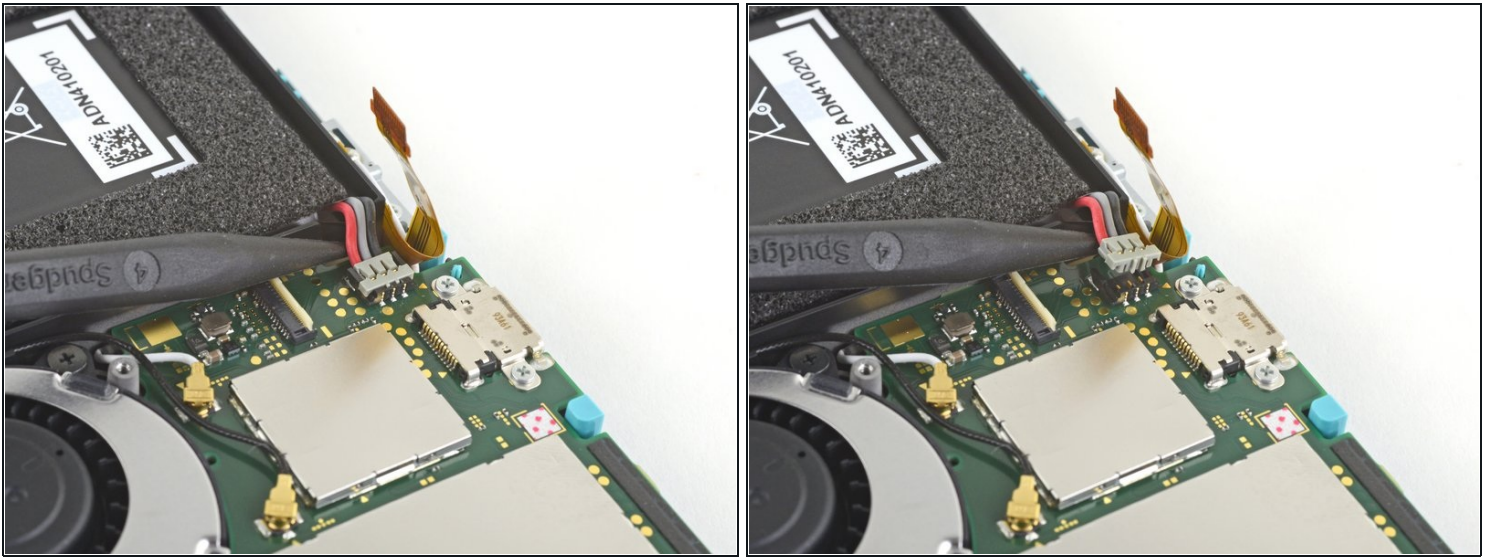
Step 12



⚠ Do Not Use Metal Tweezers! Some fixers state that metallic tweezers can short circuit the ribbon cable/connector. It might be safer to just use nylon-tipped or ceramic-tipped tweezers.

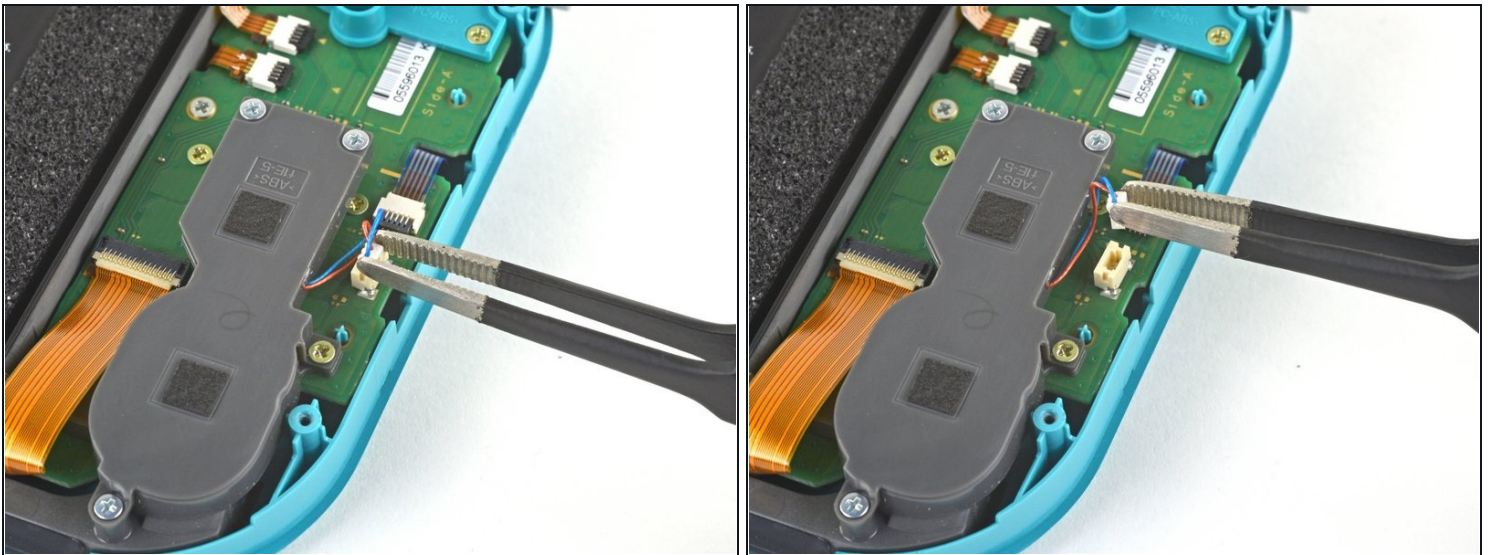
- Use a pair of tweezers to slide the interconnect cable out of its connector on the motherboard.

Step 13



- Use the point of a spudger to pry the battery connector straight up and out of its socket on the motherboard.

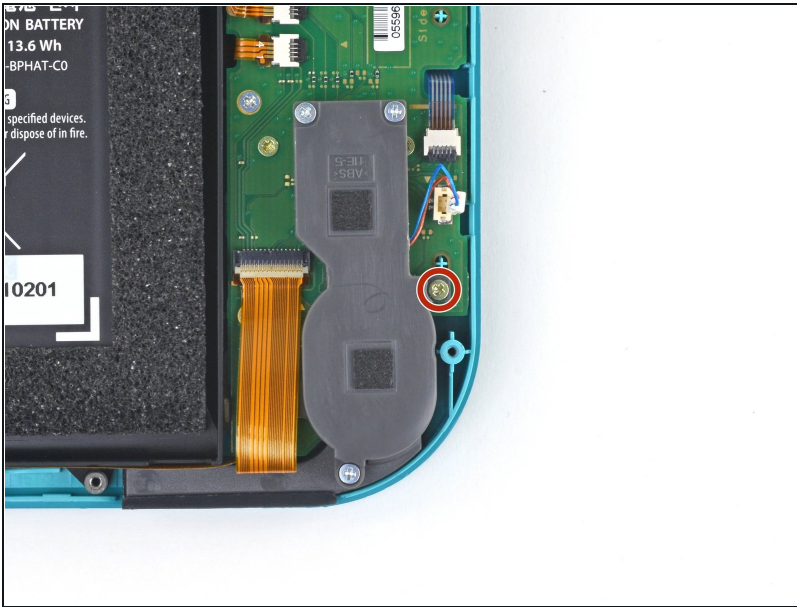
Step 14 — Remove the left speaker module



- Use a pair of tweezers or your fingers to pull the left speaker cable straight up and out of its socket on the daughterboard.

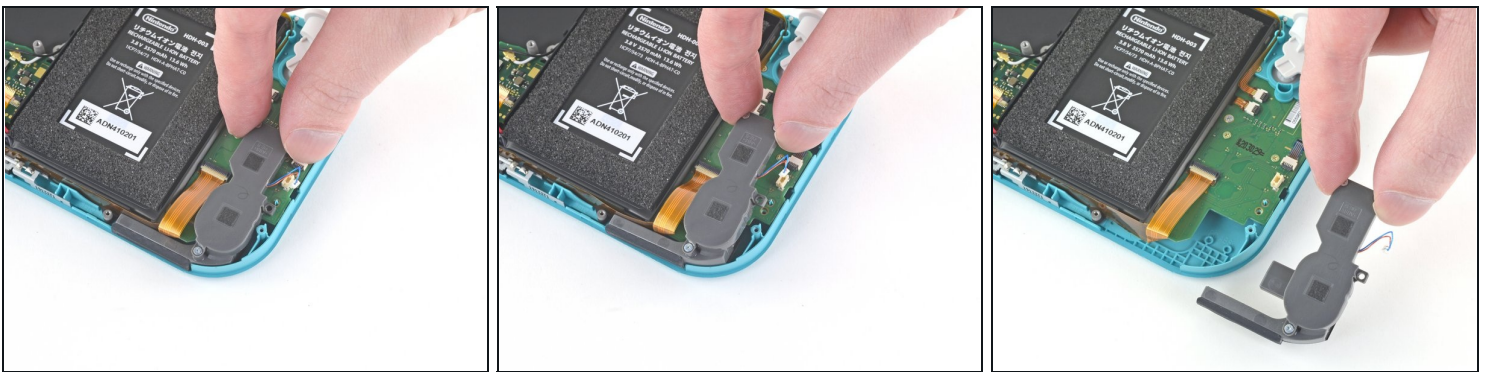
⚠ Do not pull from the wires, or else you risk ripping the wires off the connector.

Step 15



- Use a JIS 000 driver or an official iFixit PH 000 driver to remove the 4.5 mm screw securing the left speaker module.

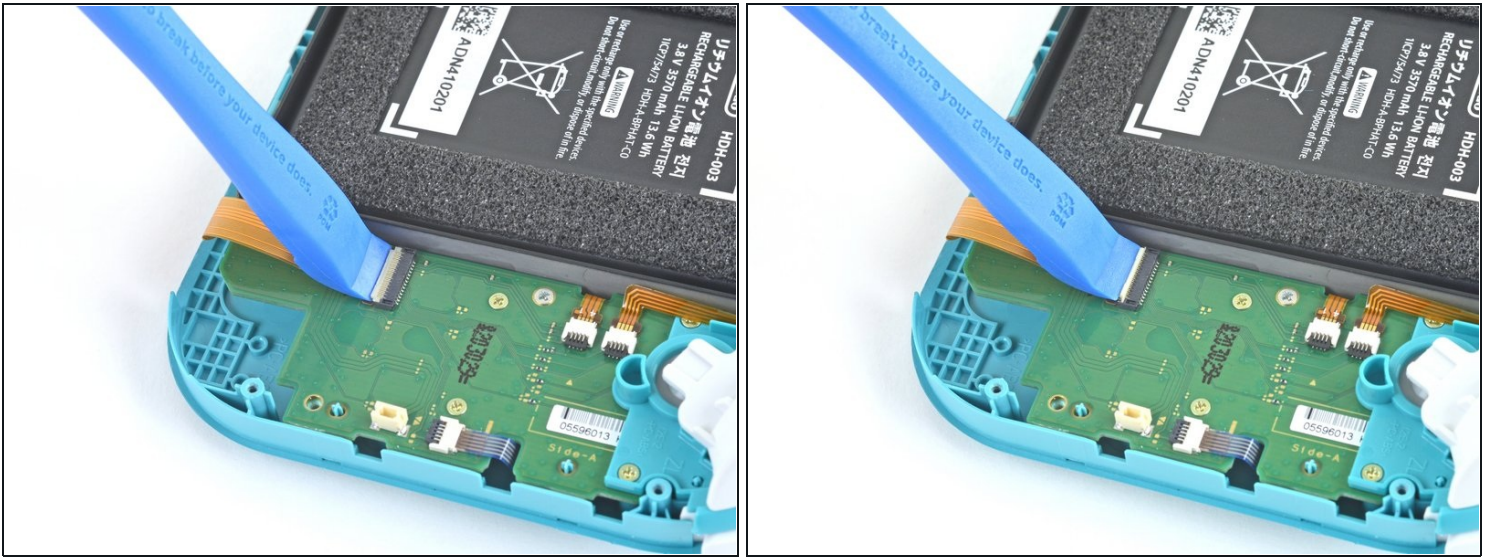
Step 16



- Use your fingers to lift the speaker module up and out of its recess to remove it.

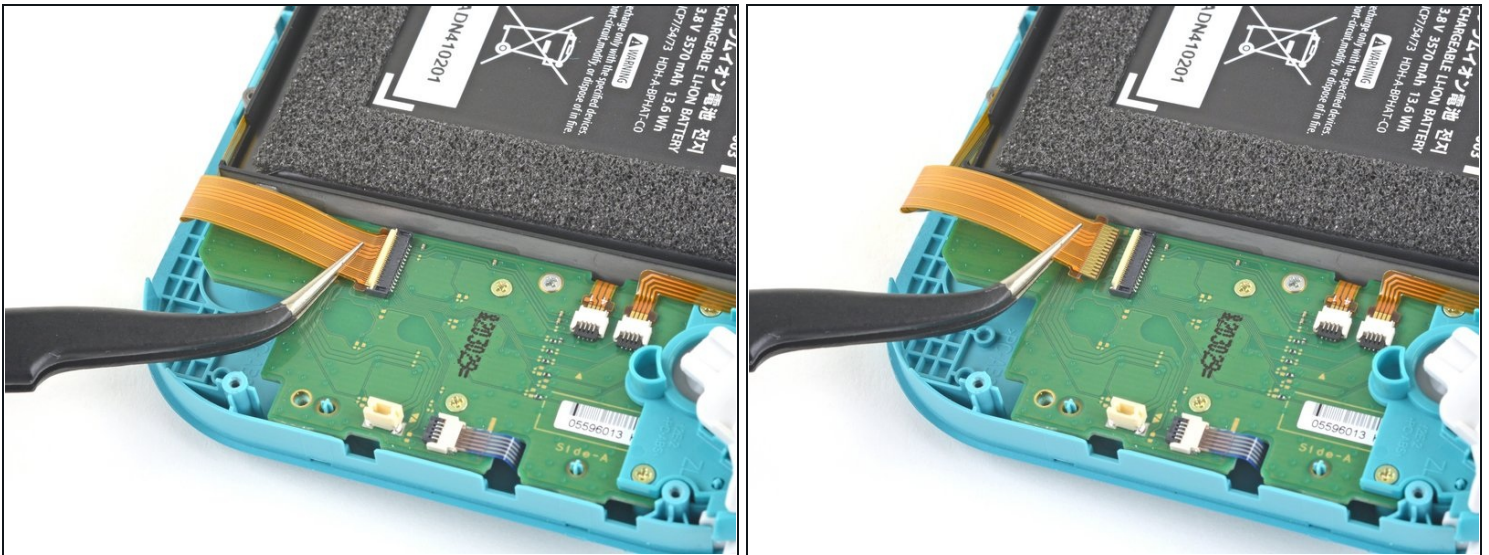
⚠ Part of the speaker module sits underneath a delicate ribbon cable. Take care not to snag the speaker module on the cable as you remove it.

Step 17 — Disconnect the motherboard interconnect cable



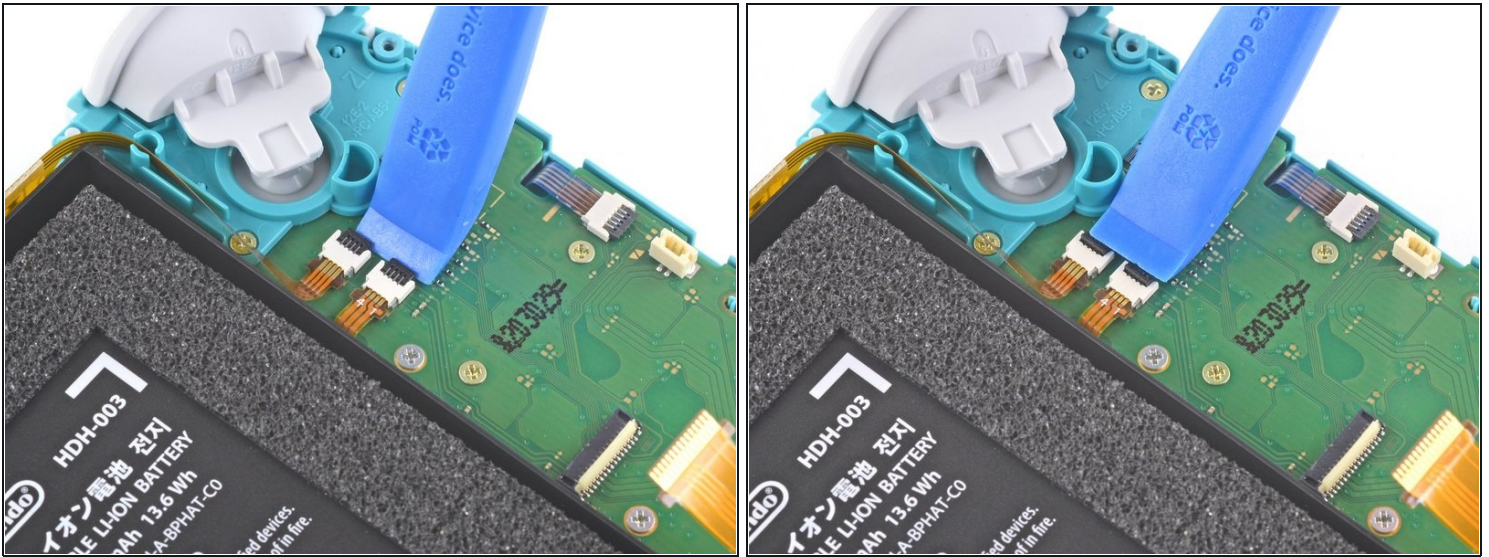
- Use an opening tool or your fingernail to flip up the small, hinged locking flap on the motherboard interconnect cable's ZIF connector.

Step 18



- Use a pair of tweezers to slide the motherboard interconnect cable out of its connector on the daughterboard.

Step 19 — Disconnect the screen and volume button cables



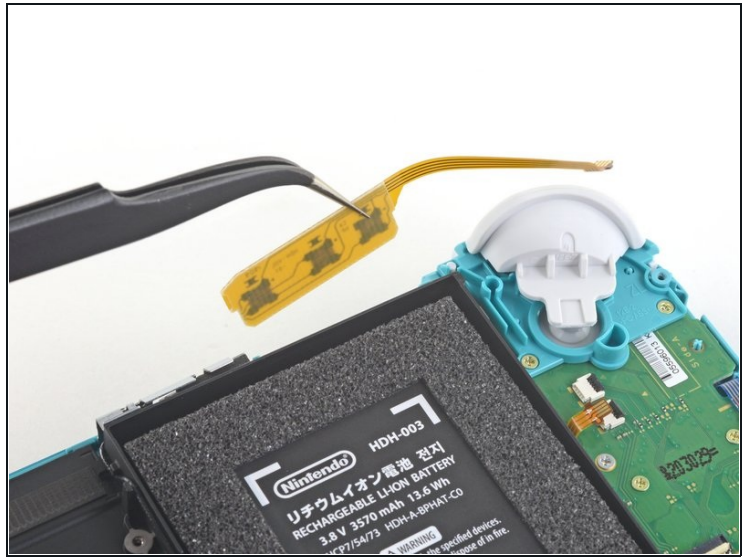
- Use an opening tool or your fingernail to flip up the small, hinged locking flaps on the two ribbon cable ZIF connectors.

Step 20



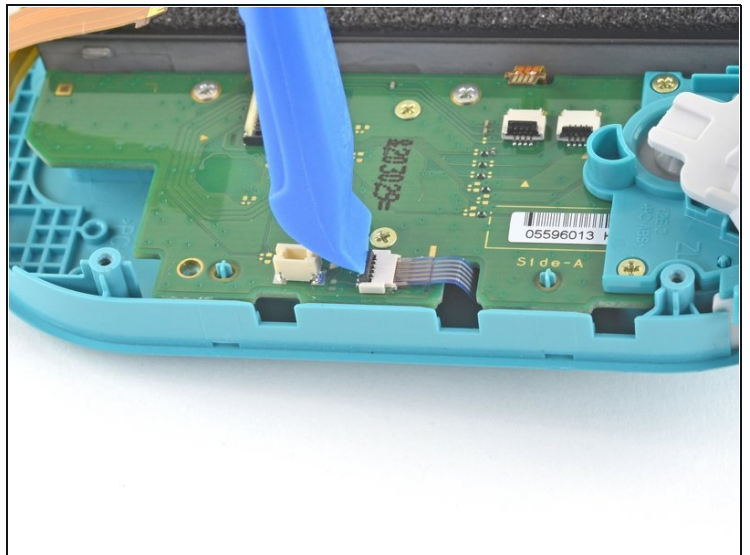
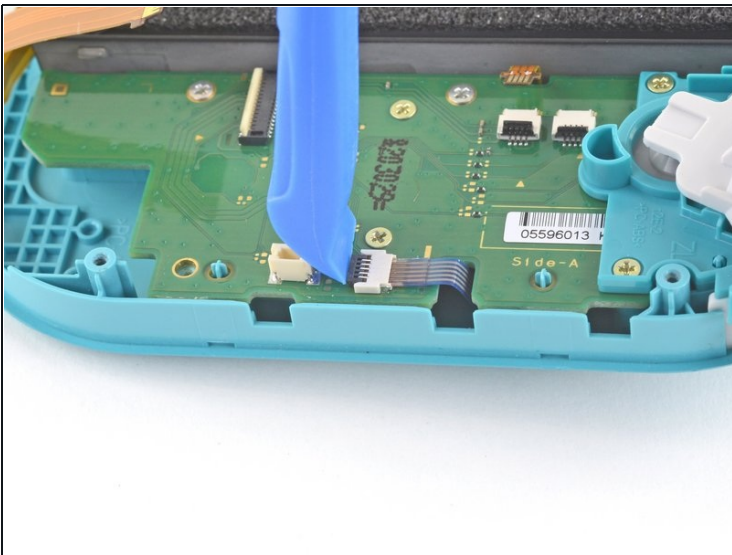
- Use a pair of tweezers to slide the daughterboard screen cable out of its connector on the motherboard.
- Repeat this procedure for the volume buttons cable.

Step 21 — Remove the volume buttons



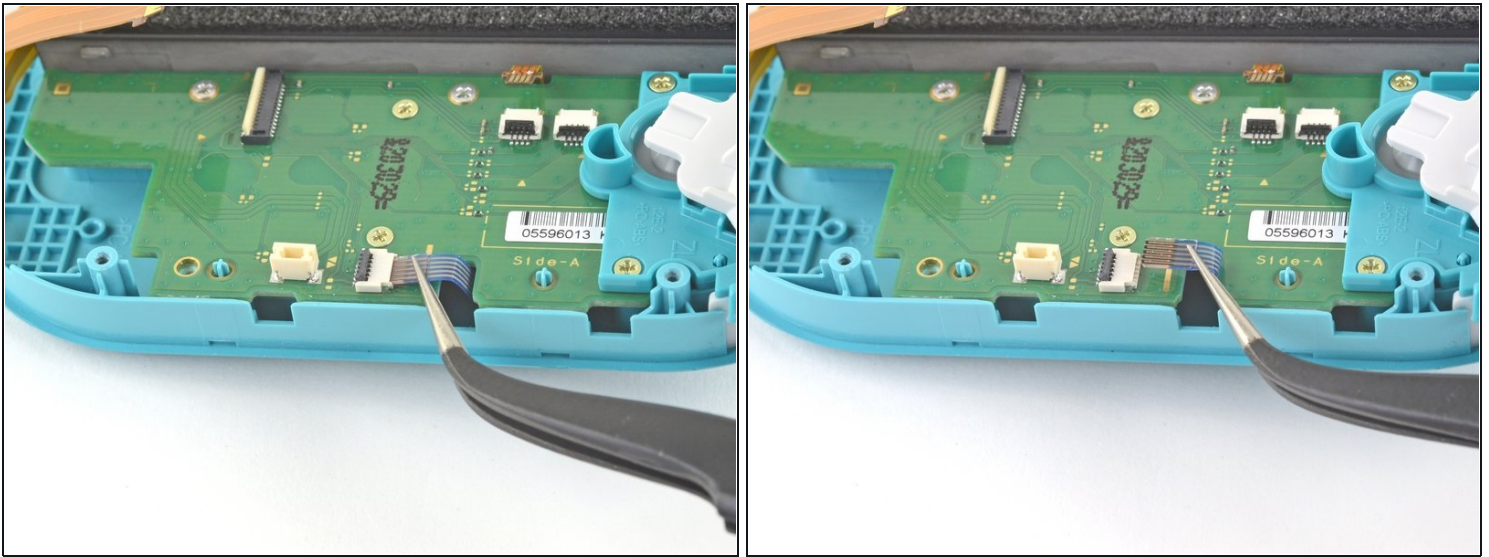
- Use a pair of tweezers or your fingers to remove the volume buttons.

Step 22 — Disconnect the joystick cable



- Use an opening tool or your fingernail to flip up the small, hinged locking flap on the left joystick cable's ZIF connector.

Step 23



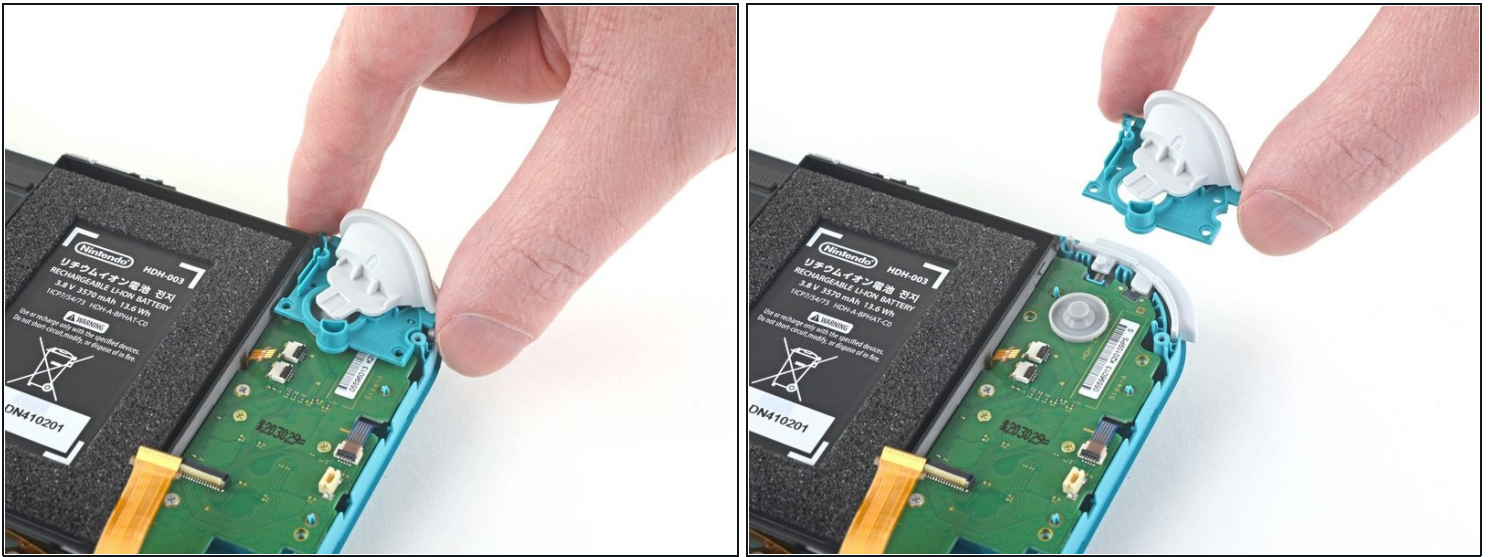
- Use a pair of tweezers to slide the left joystick cable out of its connector on the daughterboard.

Step 24 — Remove the left trigger button assembly



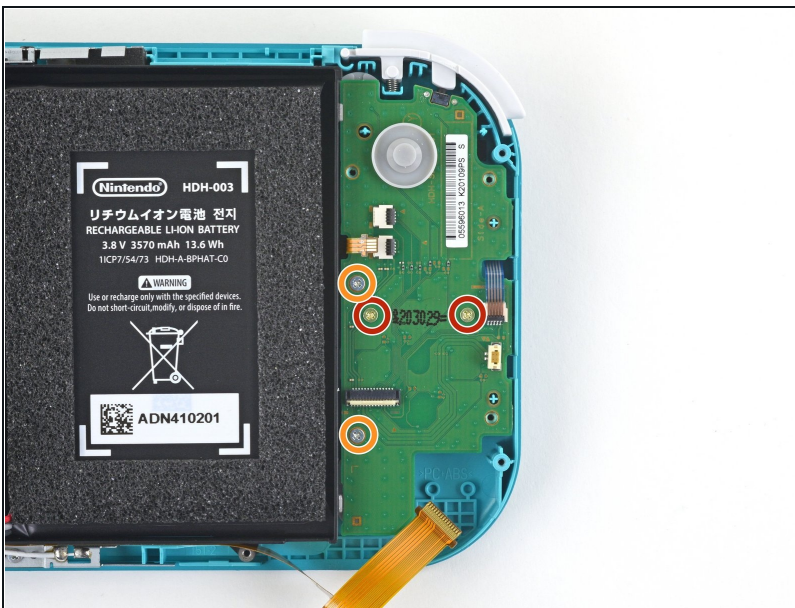
- Use a JIS 000 driver or an official iFixit PH 000 driver to remove the two 4.5 mm screws securing the left trigger button assembly.

Step 25



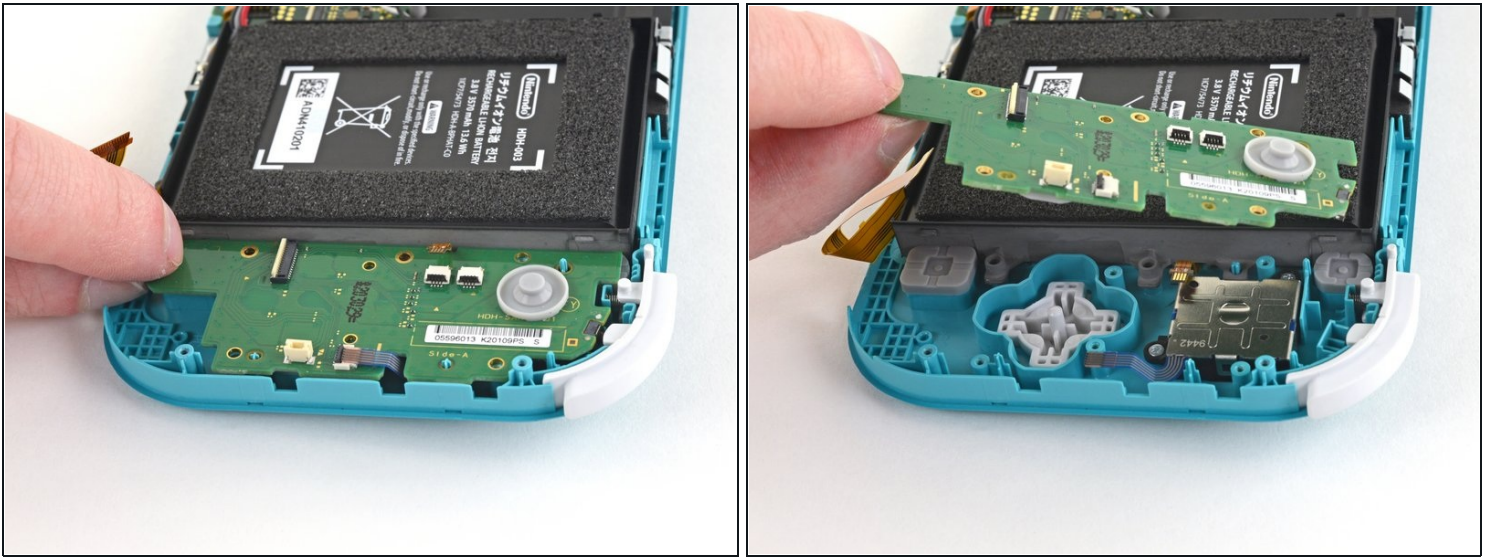
- Remove the left trigger button assembly.

Step 26 — Remove the daughterboard



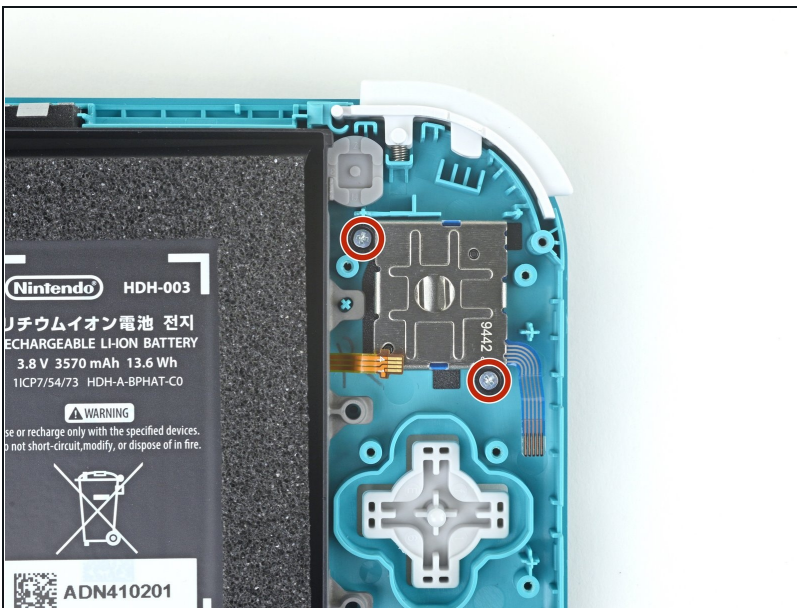
- Use a JIS 000 driver or an official iFixit PH 000 driver to remove the following four screws:
 - Two 4.5 mm screws
 - Two 6 mm screws

Step 27



- Use your fingers to lift the daughterboard up and out of its recess to remove it.

Step 28 — Remove the left joystick



- Use a JIS 000 driver or an official iFixit PH 000 driver to remove the two 3.5 mm screws securing the left joystick.

Step 29



- Use the flat end of a spudger to lift the joystick up and out of its recess.
 - Use your fingers to remove the joystick.
- ⓘ There is a thin black gasket around the hole where the joystick pokes through the frame. Try not to disturb this gasket as you remove the joystick.
-

To reassemble your device, follow these instructions in reverse order.

Take your e-waste to an [R2 or e-Stewards certified recycler](#).

Repair didn't go as planned? Try some [basic troubleshooting](#), or ask our [Nintendo Switch Lite Answers community](#) for help.