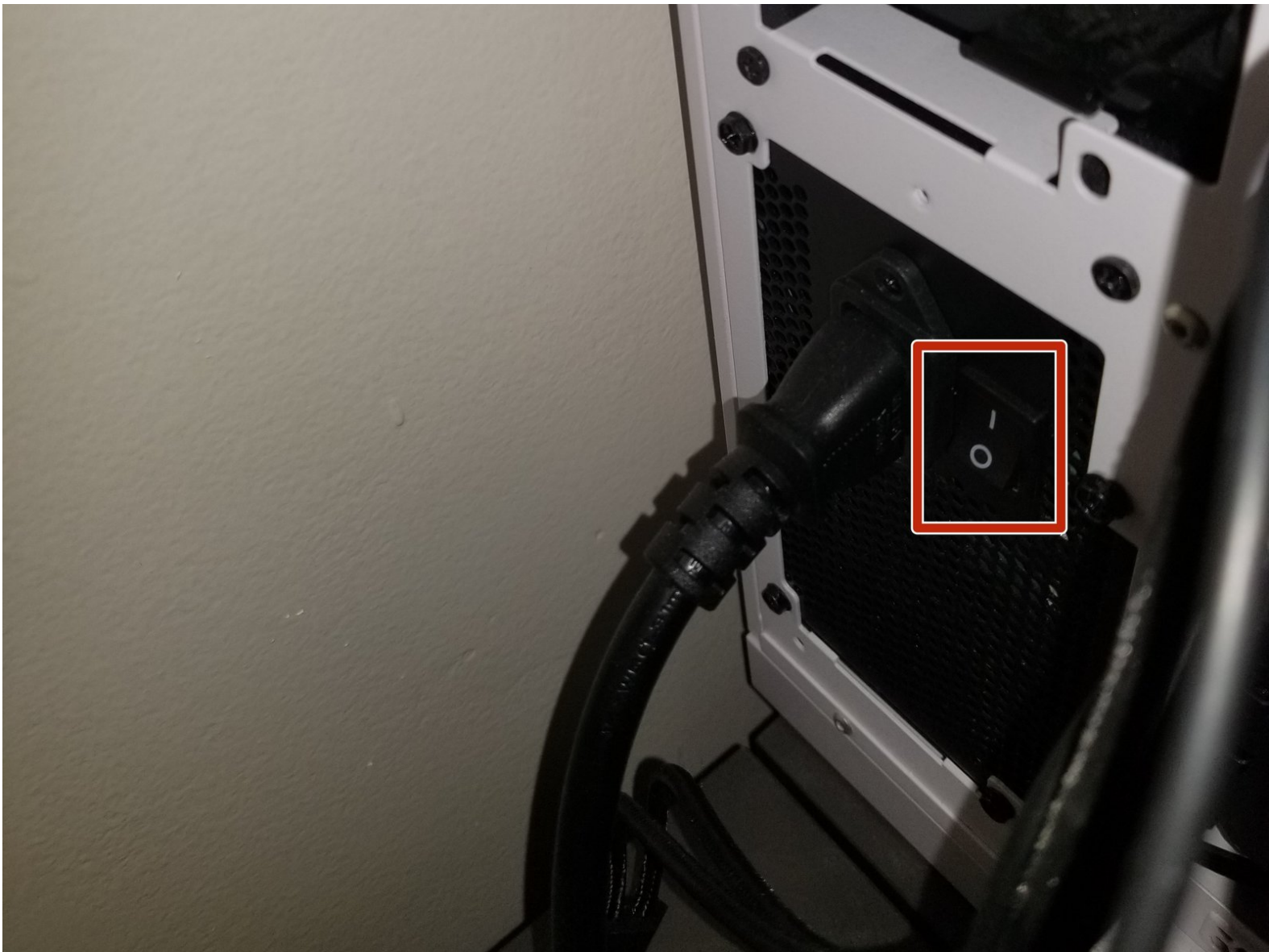




Lian Li PC-011 Hard Drive Replacement

This will teach you how to safely change a Hard Drive on a Lian Li PC-011

Written By: Suhaib Rahman



INTRODUCTION

This guide is for first time builders or people that bought prebuilt computers in a Lian Li PC-011 case. This guide will walk you through how to install or replace a 3.5 hard drive in the case. It is not a very difficult task and it should only take you 30 minutes to complete.



TOOLS:

- [Phillips #0 Screwdriver](#) (1)



PARTS:

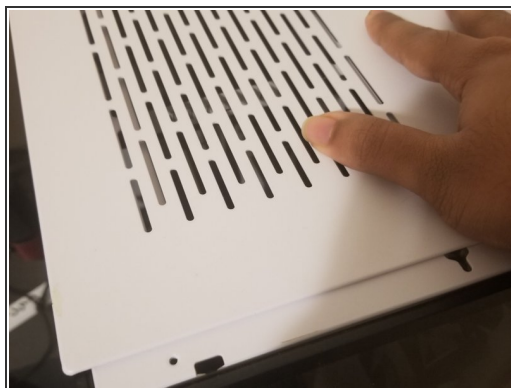
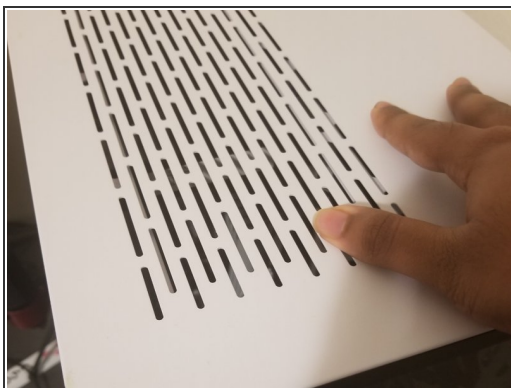
- [4 TB 3.5" Hard Drive](#) (1)

Step 1 — Hard Drive



- Power off the system using the button on the back of the computer.
- Remove the power cord from the computer.

Step 2



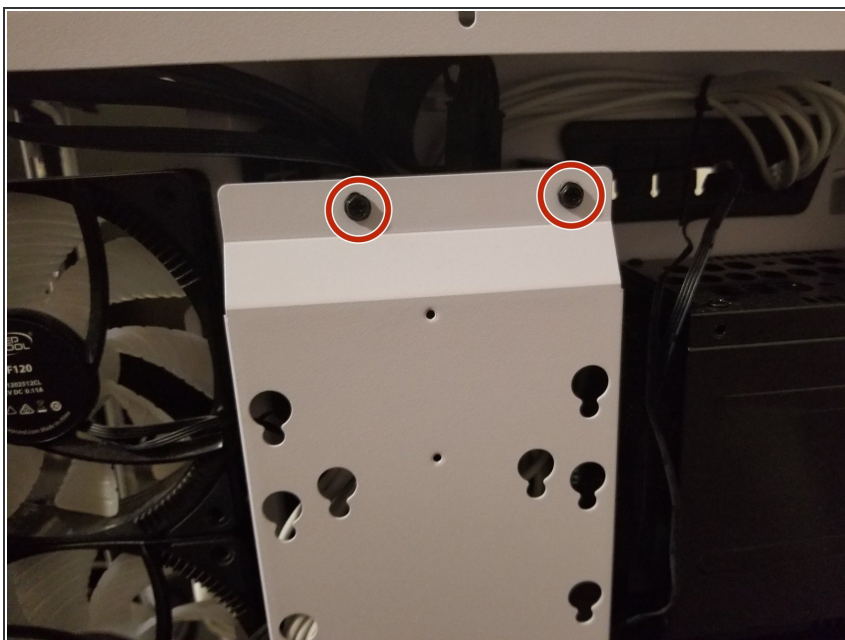
- Remove two thumb screws from the back of the case.
- Slide the top panel backwards.

Step 3



- Remove the remainder of the panels by pulling upwards on them.

Step 4



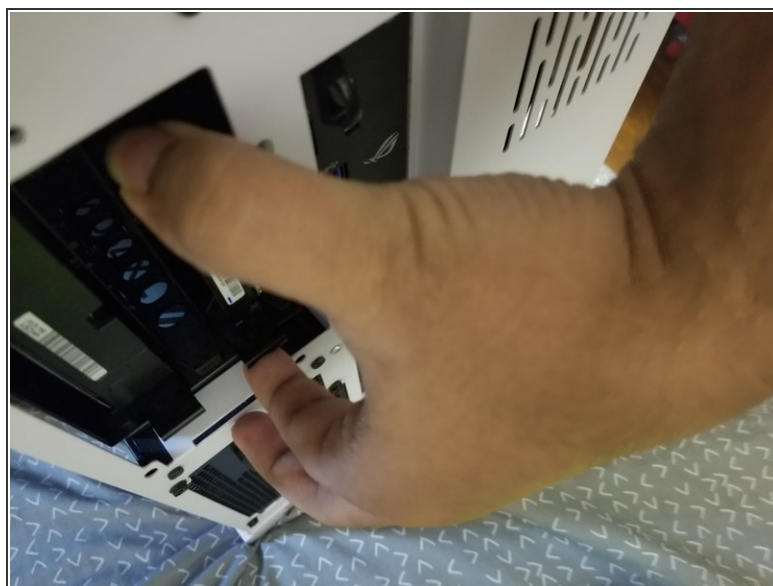
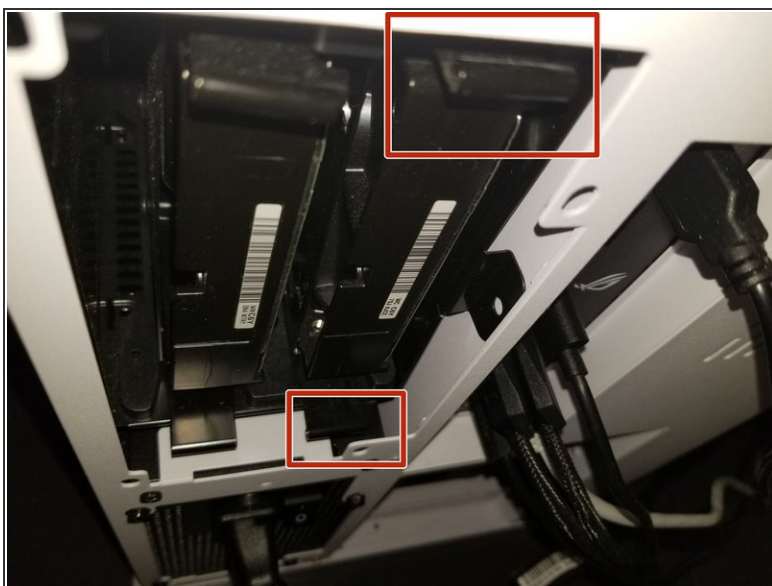
- Remove the two 3 mm Phillips #2 screws from the wire cover.

Step 5



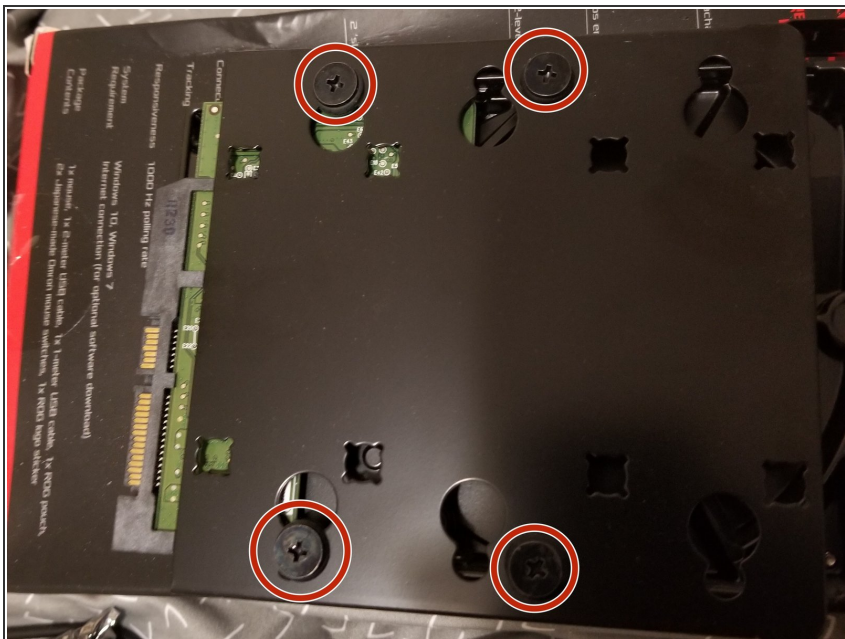
- Unplug the two cables from the hard drive.

Step 6



- Push together the bottom and top tabs and pull the hard drive tray out of the case.

Step 7



- Remove four #2 Phillips screws from the hard drive case in a cross pattern.

Step 8



- Replace the old hard drive with the new hard drive.

To reassemble your device, follow these instructions in reverse order.