



Samsung Gear S3 Battery Replacement

Quick and simple guide to replacing the Samsung Gear S3 Battery.

Written By: Mister HD





TOOLS:

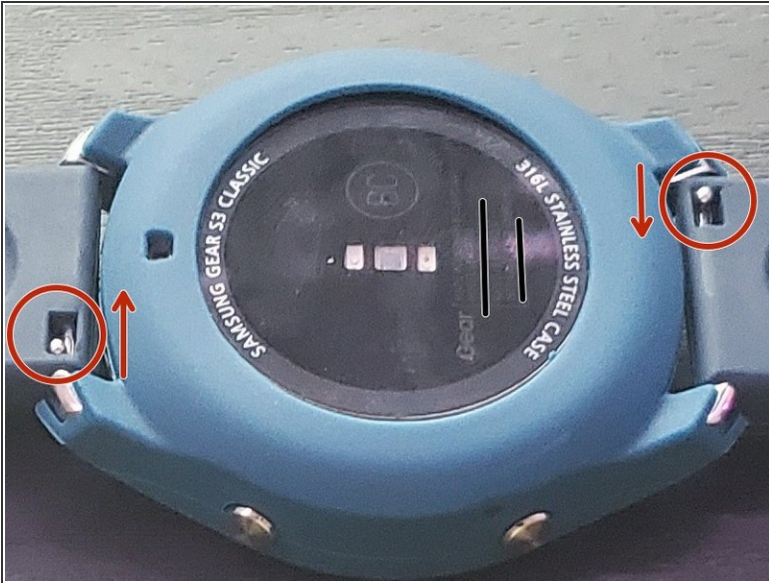
- [Tri-point Y000 Screwdriver](#) (1)
- [Phillips #000 Screwdriver](#) (1)
- [Spudger](#) (1)
- [Jimmy](#) (1)



PARTS:

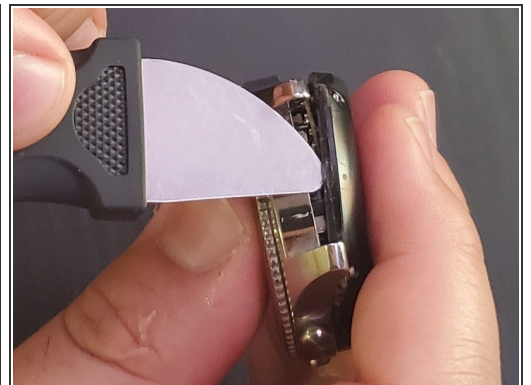
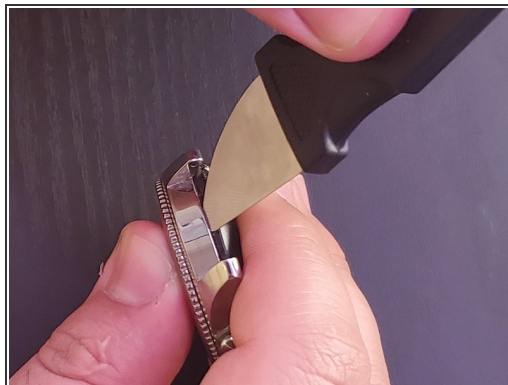
- [Samsung Gear S3 Replacement Battery](#) (1)

Step 1 — Removing Wrist Straps



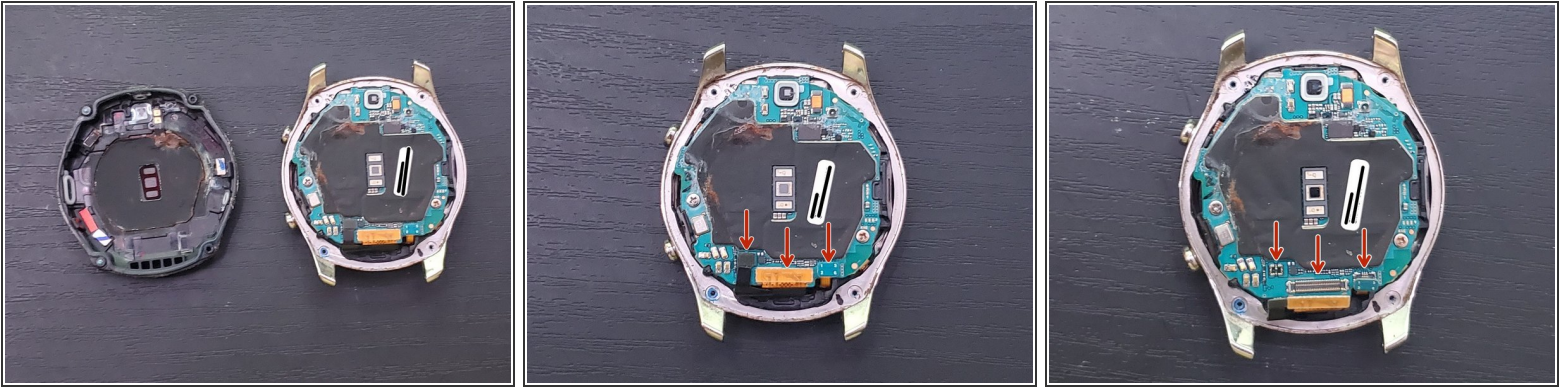
- Locate the small push tabs on the back of the wrist straps, pushing them in to release the wrist strap.
- Remove any casing or housing on the watch, and clean any dust/debris.
- *(Black lines are used for privacy)*

Step 2 — Removing Back Plate & Lifting Out



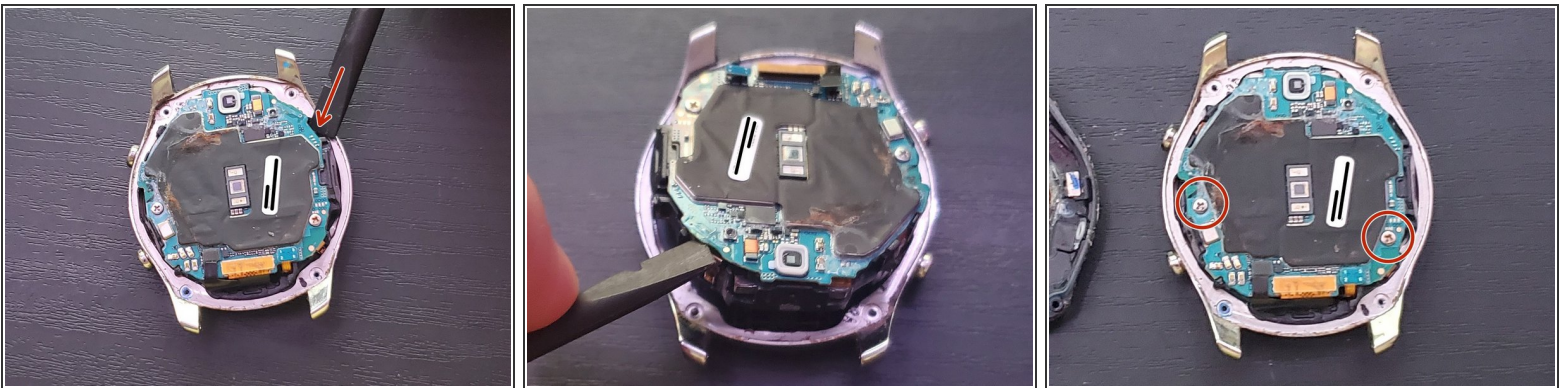
- Using a Tri-point screwdriver, unscrew the four (4) back screws. *Note: The case screws may remain in their place.*
- Using a metal jimmy, and a little bit of force, push down then lever it up to pop out the case.

Step 3 — Detaching Ribbons



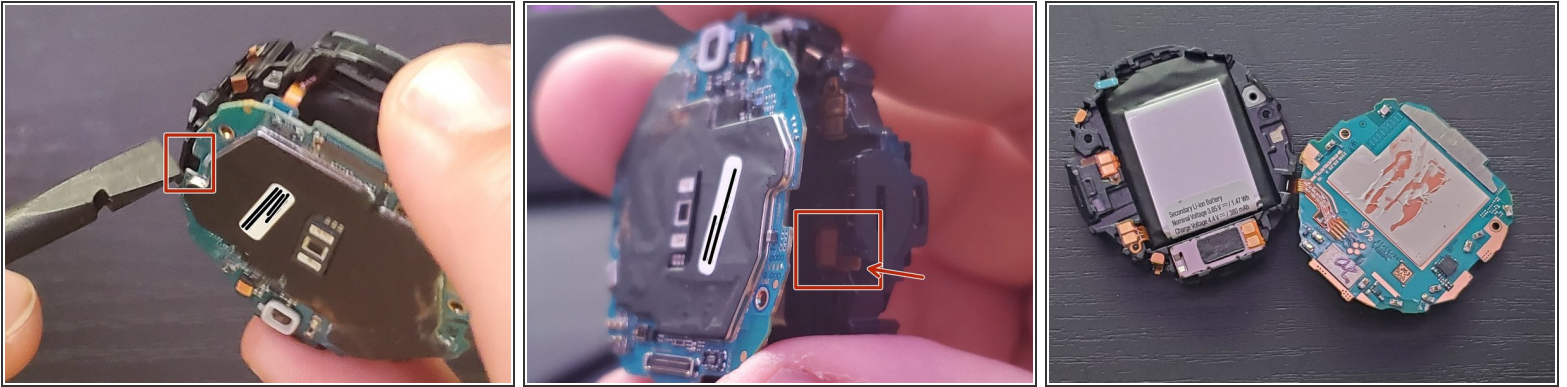
- Detatch the three (3) ribbons carefully with a plastic spudger. The ribbons to detach is black, yellow, & blue. You should feel a little click when re-attaching later. *Note: These parts are very delicate so exercise caution!*

Step 4 — Removing Motherboard



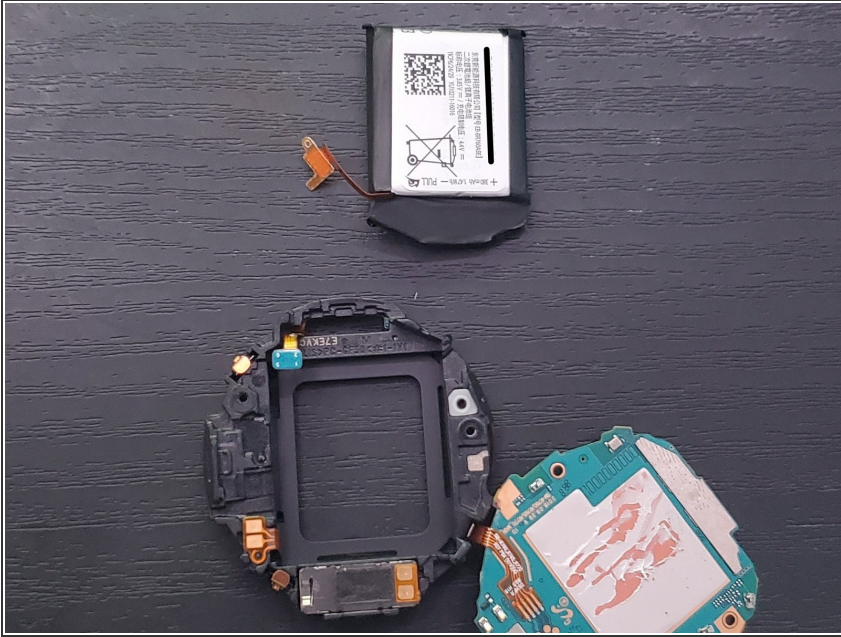
- Prying up from the corner with the red arrow, lift the motherboard and maneuver the ribbons out of the opening making sure not to tug or rip them.
- Remove two Phillips head screws before moving on.

Step 5 — Splitting Motherboard from Battery Compartment



- Make sure to have the two Phillips head screws completely removed before attempting the following steps.
- Pressing on the small black plastic area will give you leverage to pull off the motherboard gently.
- Do **NOT** flip the motherboard without first detaching the battery's ribbon. The motherboard will still be connected by a ribbon. Only the battery's ribbon will be detached (*Marked by the red arrow in the second photo*). Using a flat tool to get underneath the ribbon will lift it up allowing you to flip the motherboard over.
- The original battery will most likely be attached to the motherboard. A spudger will be needed to detach the battery from the motherboard. *Note: Use caution, gently inserting and lifting as it allows. Use of any sharp or pointed tools can rupture the battery and will cause it to burst.*

Step 6 — Replace Battery



- Insert the new battery and test for power.
- Remember to recycle your used batteries!

To reassemble your device, follow these instructions in reverse order.