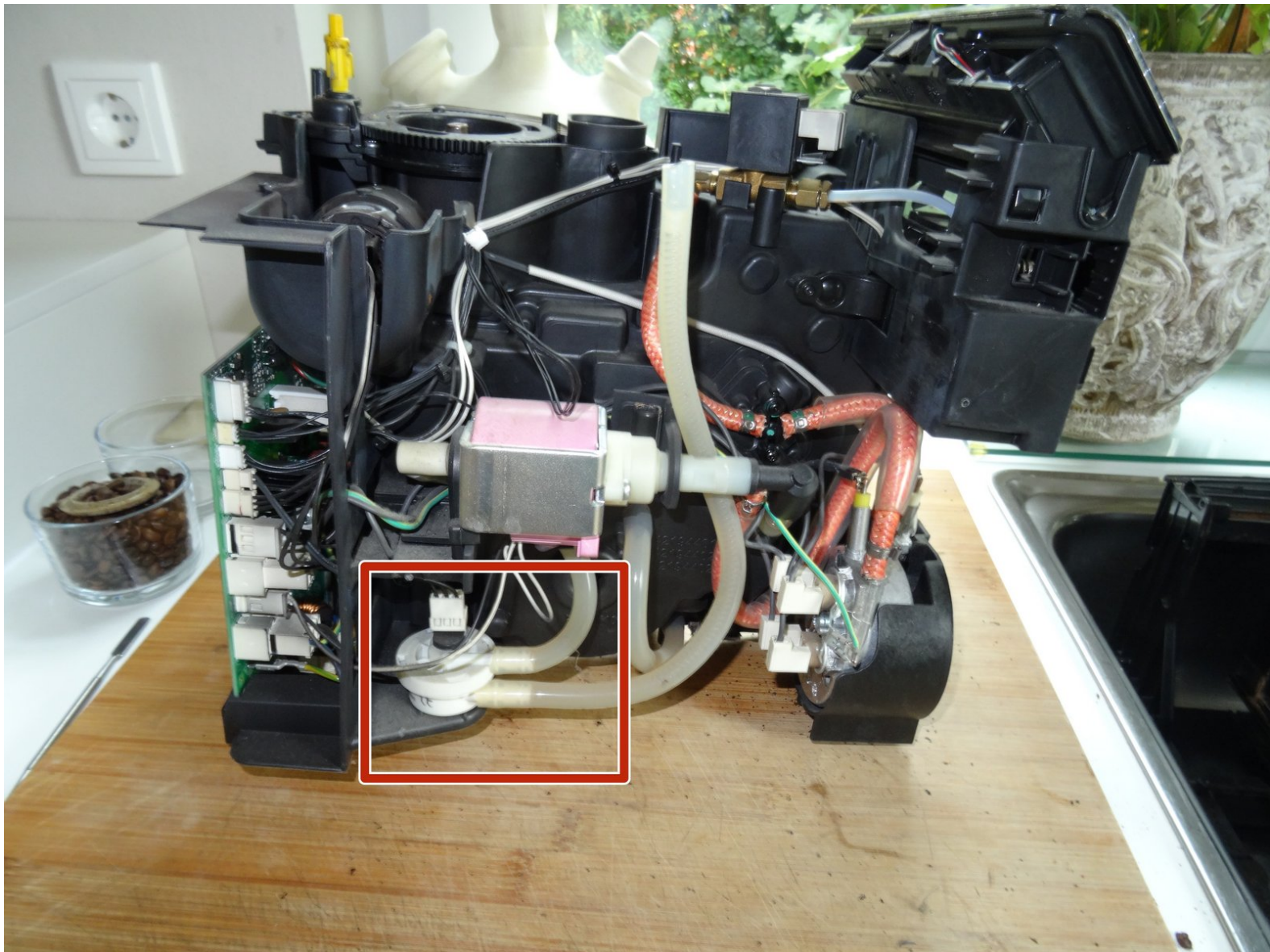




Saeco Minuto Flowmeter replacement

Replacement of the flowmeter in a Saeco Minuto

Written By: VauWeh



INTRODUCTION

If the display shows error 5, the flow meter is reporting insufficient flow. The electronics can be disturbed, the thin inlet duct is often dirty - or the water stops later, e.g. because the heater is calcified. Thus guide shos, how the flowmeter is removed, opened and revised or replaced.




TOOLS:

- [T10 Torx Screwdriver](#) (1)
 - [iFixit Opening Tools](#) (1)
 - [T20 Torx Screwdriver](#) (1)
 - [Large Needle Nose Pliers](#) (1)
-

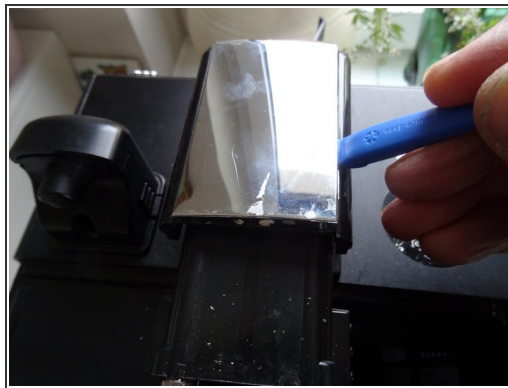
Step 1 — Open a Saeco Minuto



 Disconnect the power plug!

- Remove the water tank.
- Remove all the coffee beans.
- Remove the brewing assembly.
- Remove the drip tray and the coffee grounds drawer.

Step 2



- Pry up with a plastic opening tool at the bottom edge of the chrome-plated cover to lift up the coffee dispensing spout. This cover is often very tight, so you have to pry hard and hope that the part does not break.
- When the lower edge of the spout is released, you can pry on the side edge until the chrome cover comes off completely.

Step 3



- Remove the Torx T10 screw at the top edge of the coffee dispensing spout.

Step 4



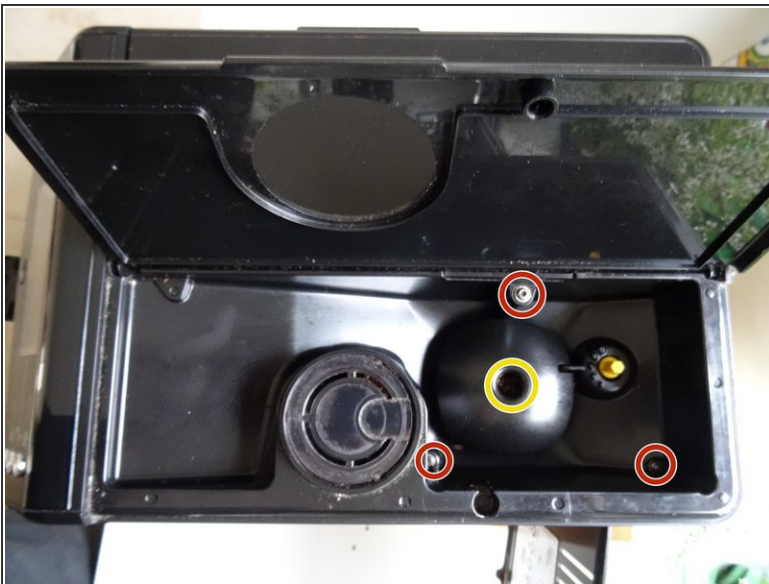
- Lift off the black cover over the coffee dispensing spout. The sliding nozzles will come off at the same time.

Step 5



- Remove both Torx T10 screws on the left and right at the bottom edge of the coffee dispensing spout.
- Pull off the hot water dispensing spout.

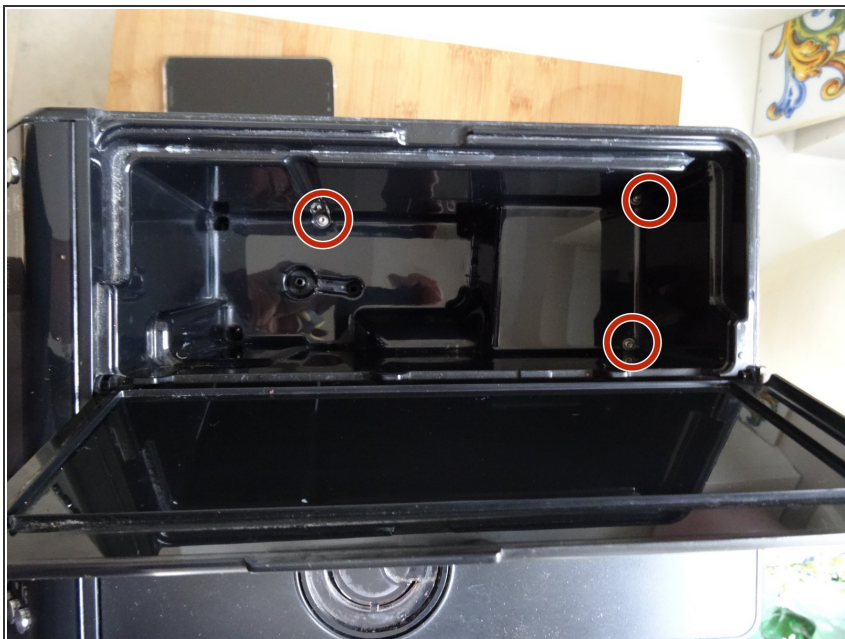
Step 6



- Remove the Torx T20 screw on the finger guard of the grinder. Remove the finger guard.
- ⓘ If the screws are covered with coffee remains, you should first clean them with a needle and a vacuum cleaner.
- Remove three Torx T10 screws in the bean container.

This document was generated on 2021-06-19 10:06:35 PM (MST).

Step 7



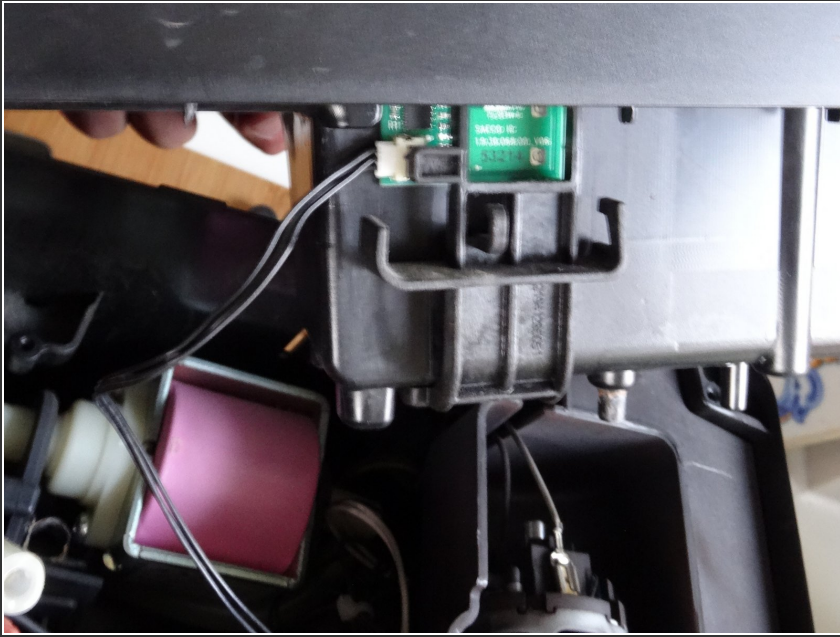
- Remove the three Torx T10 screws under the water tank.

Step 8



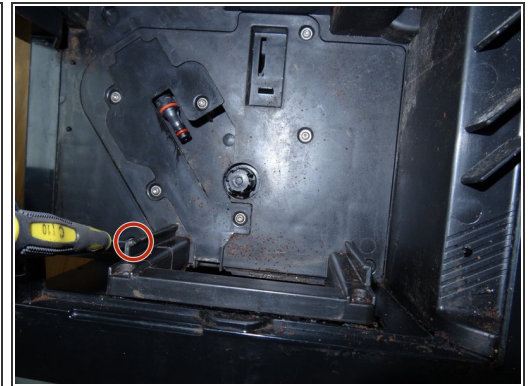
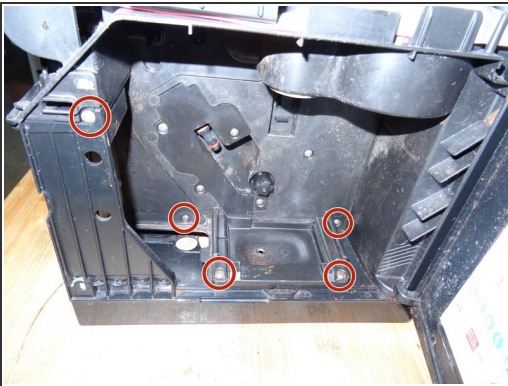
- Grab the upper cover on the sides and lift it up.
- ⓘ The cover is still connected with a cable and a tube.
- Take off the silicone tube.

Step 9



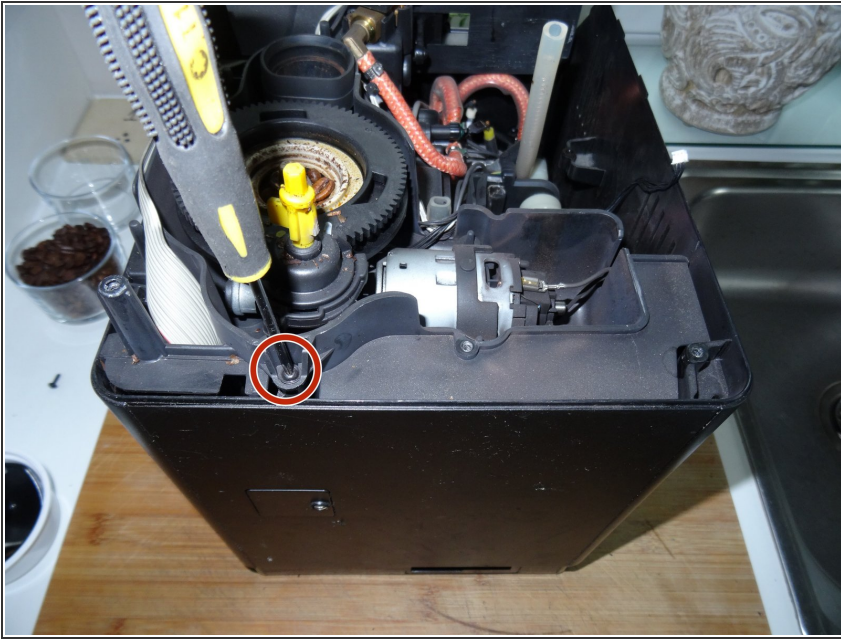
- Remove the water level sensor cable from its brackets.
- Carefully remove the plug from the water level sensor.
- The cover is now free and can be removed.

Step 10 — Saeco Minuto outer case



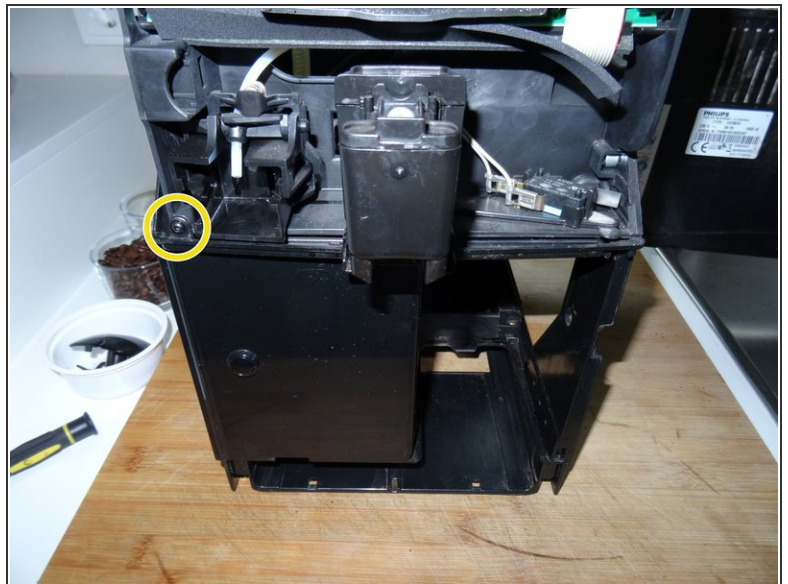
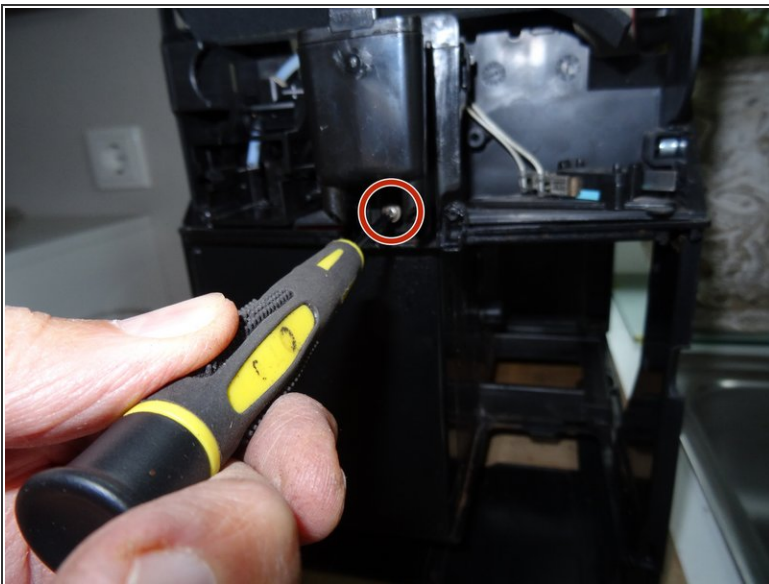
- Open the service Dior.
- Remove five Torx T10 screws.

Step 11



- Remove one T10 Torx screw securing the top of the grinder.

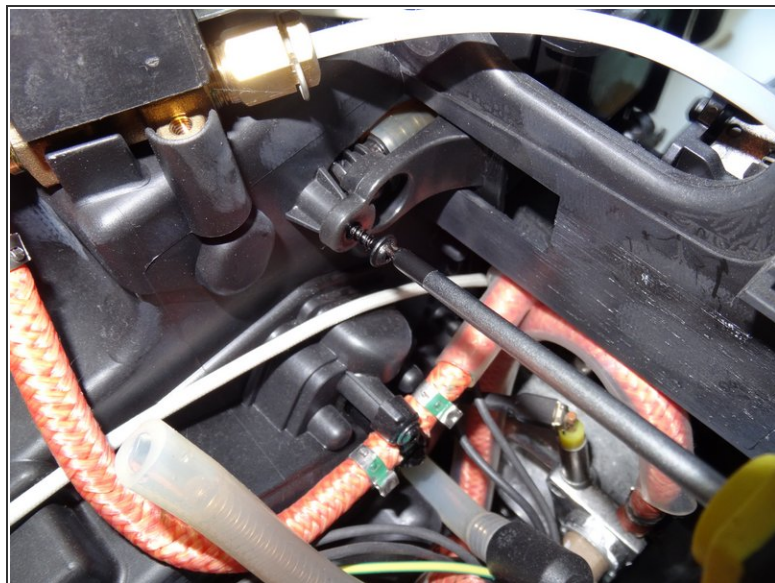
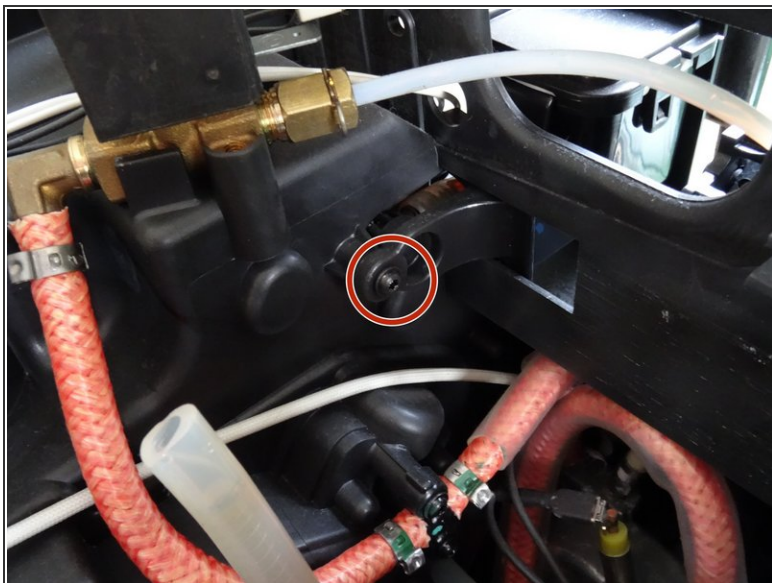
Step 12



- If you haven't already done so: Unscrew the center Torx T10 screw at the bottom of the coffee spout distributor.
- Unscrew the Torx T10 screw in the middle left front.
- Lift the service door up and remove it.

This document was generated on 2021-06-19 10:06:35 PM (MST).

Step 13



- Unscrew the Torx T10 screw securing the coffee spout distributor inside.

Step 14



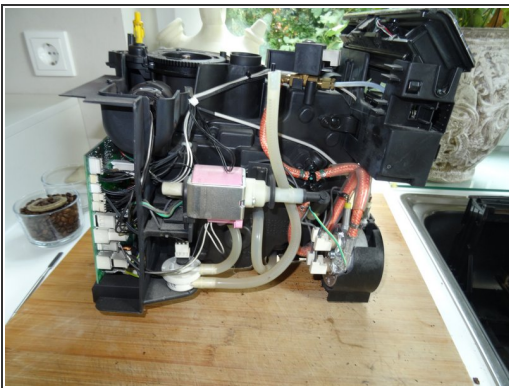
- Lift the coffee spout distributor up and remove it.
- The coffee spout distributor tends to be dirty. Open it and clean [it thoroughly](#).

Step 15



- ① You should now be able to lift the inner frame out of the outer one. On some models, it is still attached with other screws.
- Lift the inner frame up and remove it from the outer case. It may get stuck a bit, help with a plastic lever tool.

Step 16



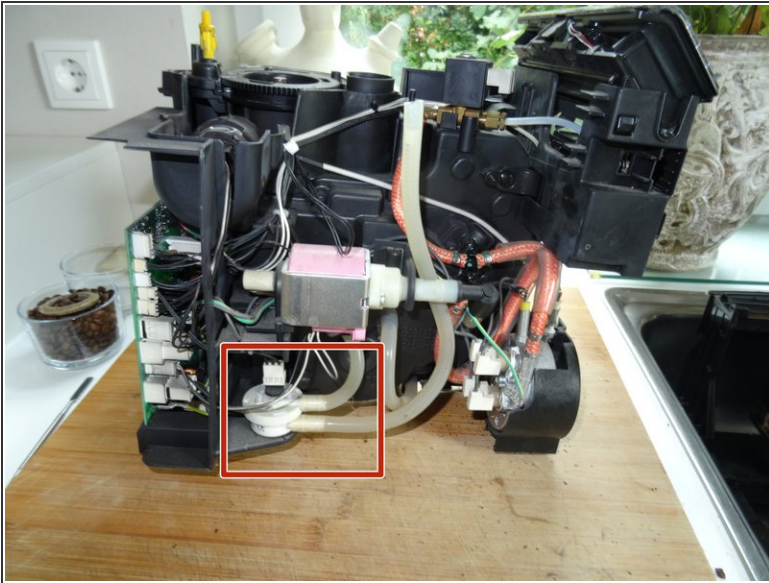
- This is what the inner frame looks like from three sides. All components are easily accessible, especially the pump, the flowmeter and the heater.

Step 17



- And this is what the completely gutted outer case looks like. It can now be cleaned well.

Step 18 — Flowmeter



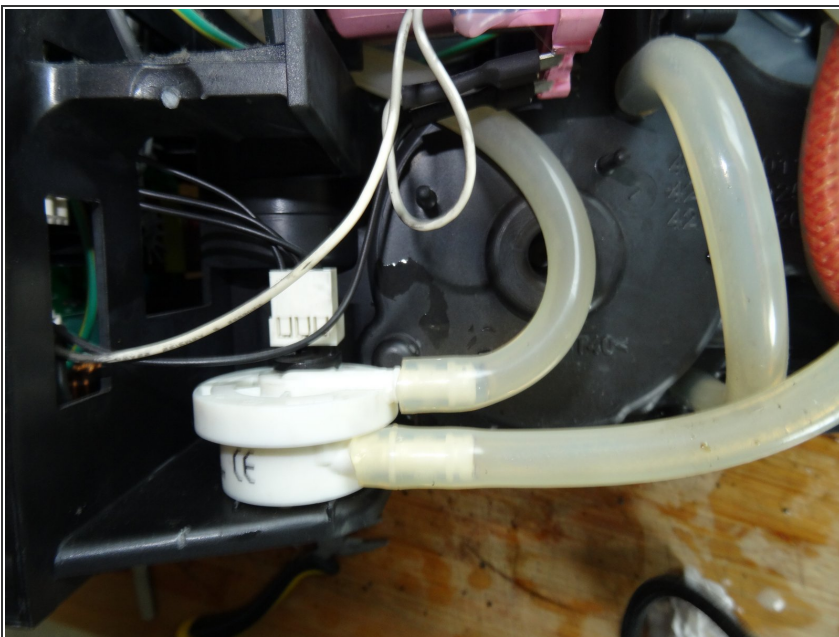
- Lay the machine on its side so the flow meter is on top.
- Disconnect the silicone tubes from the flow meter.
- The flowmeter is locked into the inner frame. Using pliers press the white plastic catches on the underside together and press the flowmeter out.
- Disconnect the flowmeter.
- Remove the flowmeter.

Step 19



- Blow into the lower nozzle into the flowmeter. It should be quite easy and you should hear the turbine buzzing.
- The upper half of the flowmeter is locked in place with a bayonet catch. Turn the upper part a little counterclockwise.
- Lift off the upper half. Pay attention to the gasket. The turbine can be easily lifted out.
- Now you can clean and decalcify everything well. Clean in particular the entrance nozzle, for example with a needle. The opening is quite narrow.

Step 20



- Reassemble the flowmeter and check again by blowing into it to make sure that the water flows free and that the turbine is buzzing nicely.
- ☑ If not the flowmeter has to be replaced.

Repeat the steps in reverse order to reassemble your device.