



# Samsung Galaxy A10e SIM Card Replacement

Written By: Thomas Boland



## INTRODUCTION

This guide shows how to remove the SIM card tray to replace the SIM card for the Galaxy A10e.



### TOOLS:

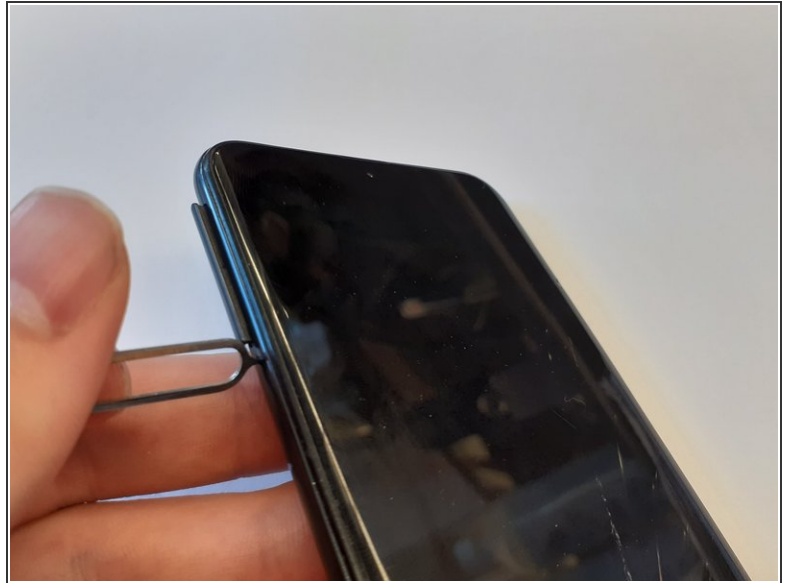
- [SIM Card Eject Tool](#) (1)



### PARTS:

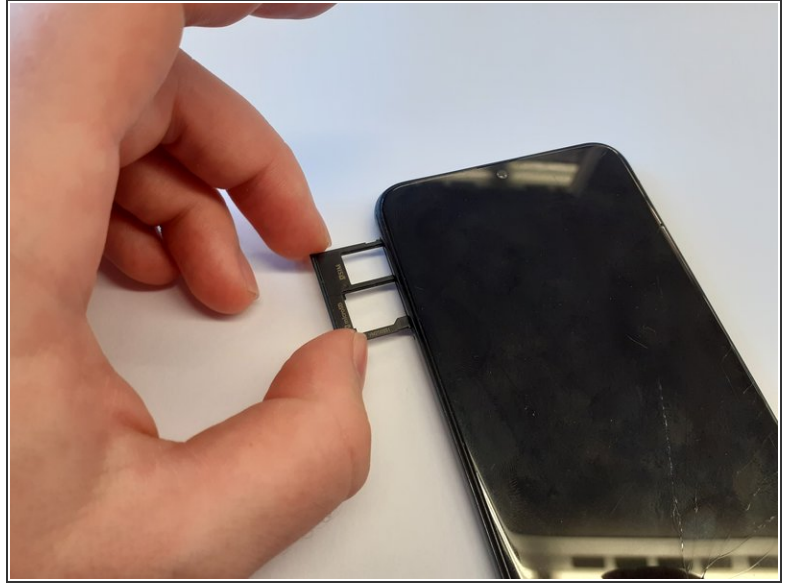
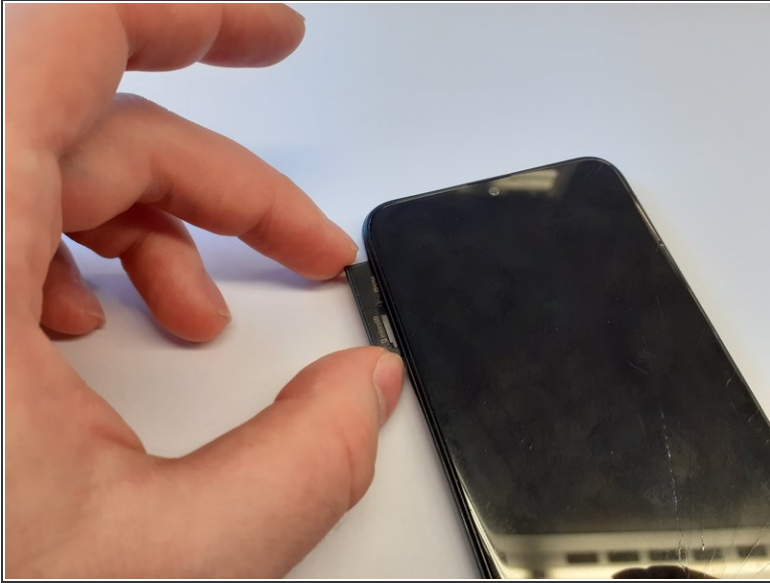
- [Galaxy A10e SIM Card Tray](#) (1)

## Step 1 — SIM Card



- Insert a SIM card eject tool, bit, or a straightened paperclip into the small hole in the SIM card tray.
- Press to eject the tray.

## Step 2



- Remove the SIM card tray from the phone.
  - ⓘ The SIM card(s) and SD card will fall out of the tray easily.
- ☑ When reinserting the tray, ensure the SIM card and SD card are in the correct slots and oriented correctly.
- ☑ For dual-SIM versions of this phone, there may be two SIM cards. Ensure the SIM cards are placed in the slots corresponding to the correct phone lines.

To reassemble your device, follow these instructions in reverse order.