



# Samsung Galaxy A10e Daughterboard Replacement

How to replace a damaged charge port and headphone jack daughterboard.

Written By: Thomas Boland



# INTRODUCTION

Use this guide to replace the daughterboard containing the charge port and headphone jack.



## TOOLS:

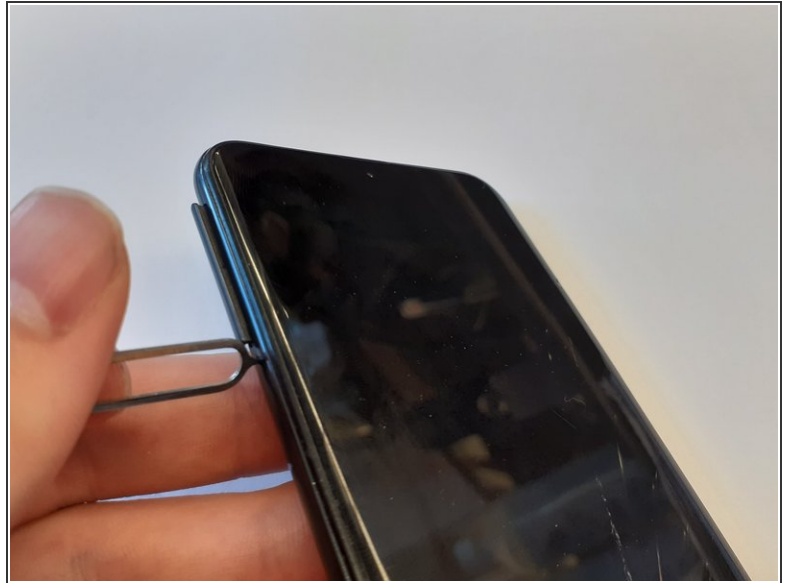
- [SIM Card Eject Tool](#) (1)
- [1 x Opening Picks](#) (1)
- [Spudger](#) (1)
- [Phillips #00 Screwdriver](#) (1)



## PARTS:

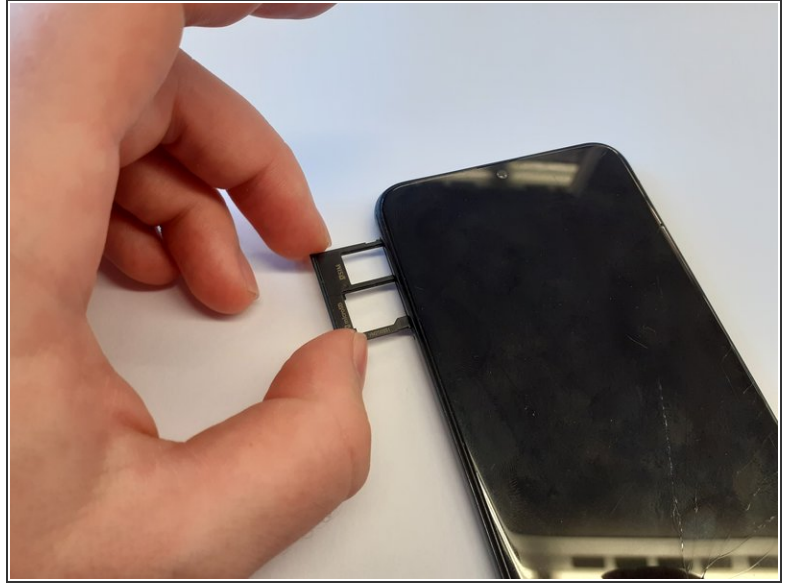
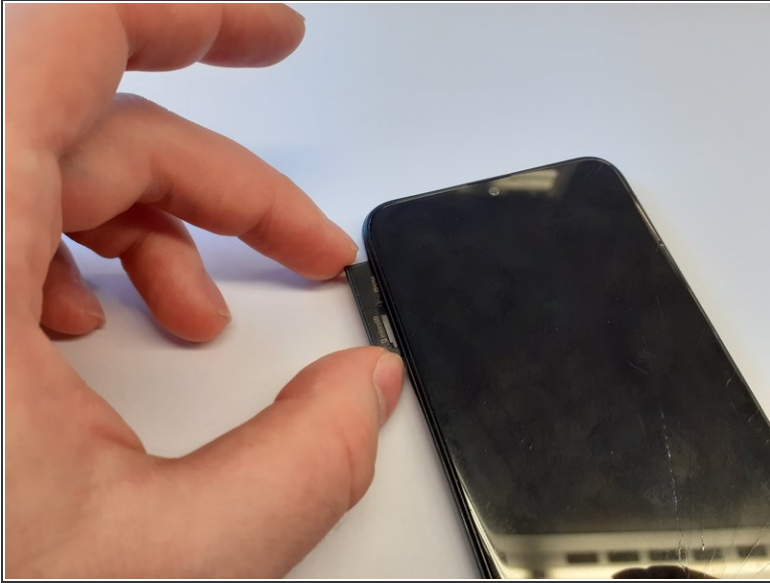
- [Galaxy A10e SIM Card Tray](#) (1)
- [Galaxy A10e Rear Cover](#) (1)
- [Galaxy A10e Motherboard Cover](#) (1)

## Step 1 — SIM Card





- Insert a SIM card eject tool, bit, or a straightened paperclip into the small hole in the SIM card tray.
- Press to eject the tray.

## Step 2



- Remove the SIM card tray from the phone.

 The SIM card(s) and SD card will fall out of the tray easily.

-  When reinserting the tray, ensure the SIM card and SD card are in the correct slots and oriented correctly.
-  For dual-SIM versions of this phone, there may be two SIM cards. Ensure the SIM cards are placed in the slots corresponding to the correct phone lines.



### Step 3 — Back Cover



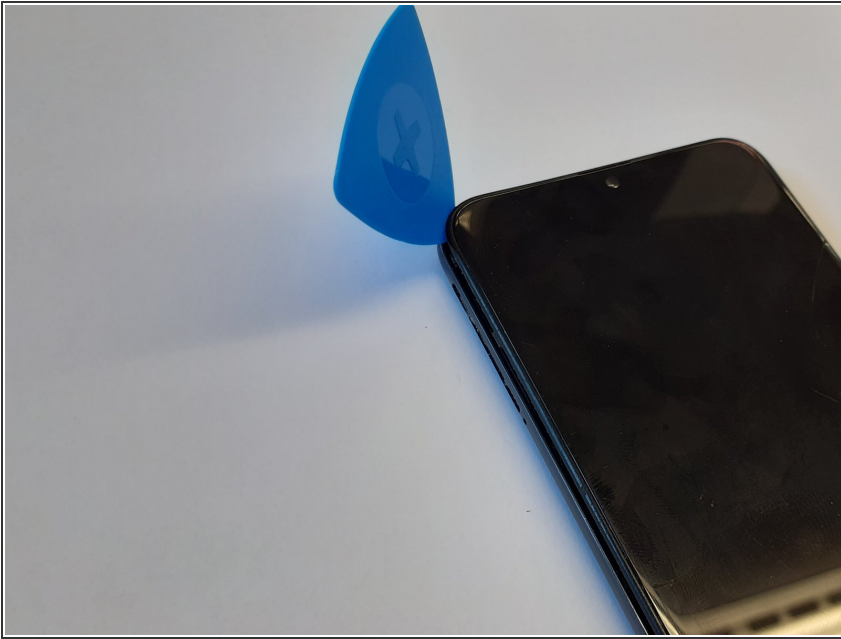
- **i** The back cover is held in place by plastic clips.
- Insert an opening pick between the screen and the back cover on the bottom of the phone where the charging port is located.

### Step 4



- Slide the opening pick to the bottom left corner to release the clips.

## Step 5



- Slide the opening pick along the left edge to the top left corner of the phone, to release the clips.

## Step 6



- Slide the opening pick from the top left corner to the top right corner to release the plastic clips.

## Step 7



- Slide the opening pick from the top right corner to the bottom right corner to release the remaining clips.

## Step 8



- Remove the back cover.

## Step 9 — Motherboard Cover



- Remove screws from the motherboard antenna cover.
- 3 Phillips #00, 3mm length.

## Step 10



- Use the tip of a spudger or tweezers to remove the antenna cover.



## Step 11



- Remove screws from the motherboard cover.
- 3 Phillips #00, 3mm length

## Step 12



- Use the tip of a spudger or tweezers to remove the motherboard cover.

## Step 13 — Battery Disconnect



- Use a spudger to disconnect the battery by prying the connector straight up from its socket.

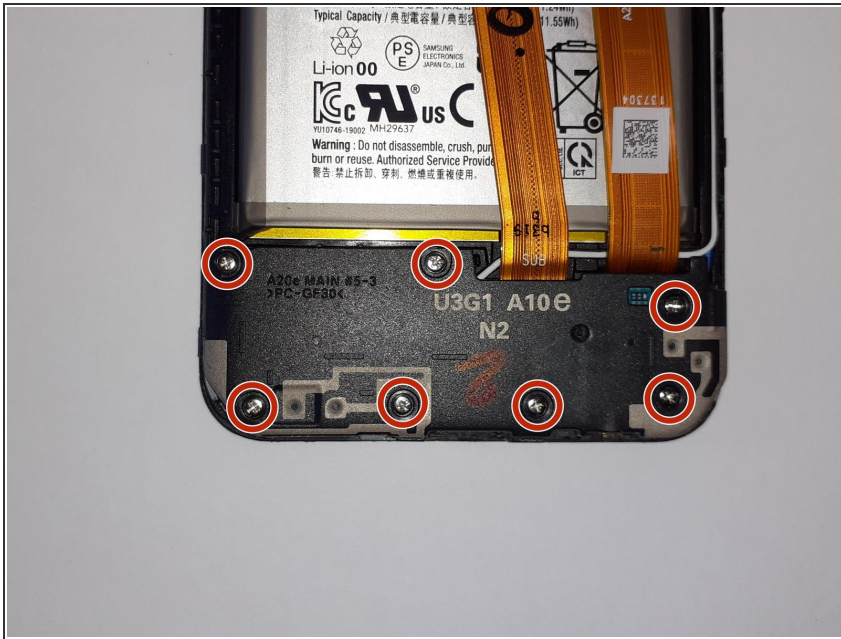
## Step 14



- Gently flex the battery connector away from its socket.

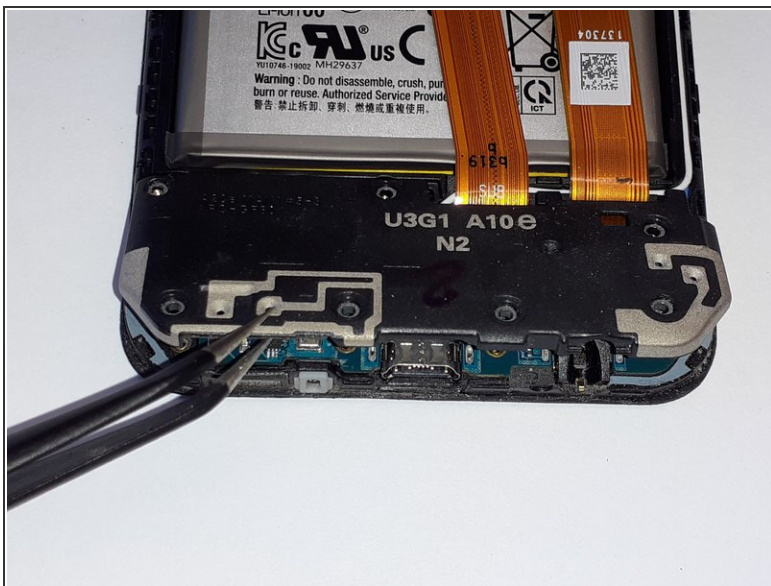


## Step 15 — Daughterboard Cover



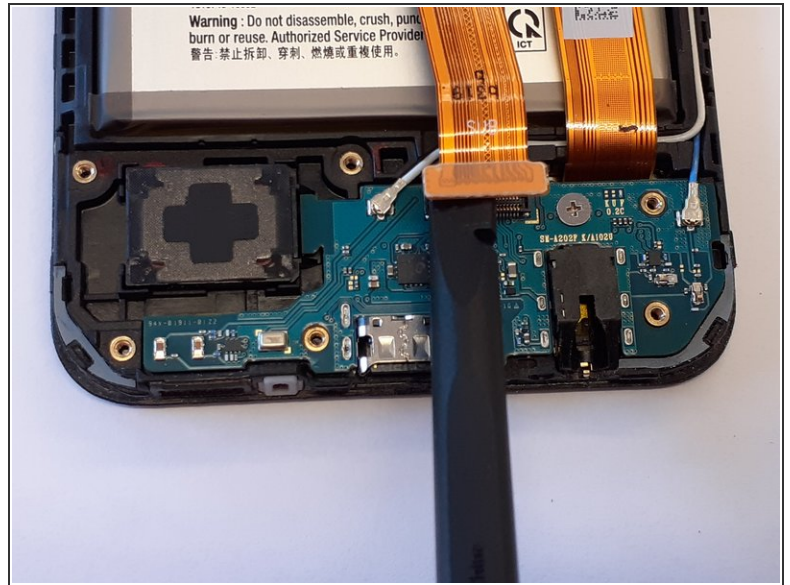
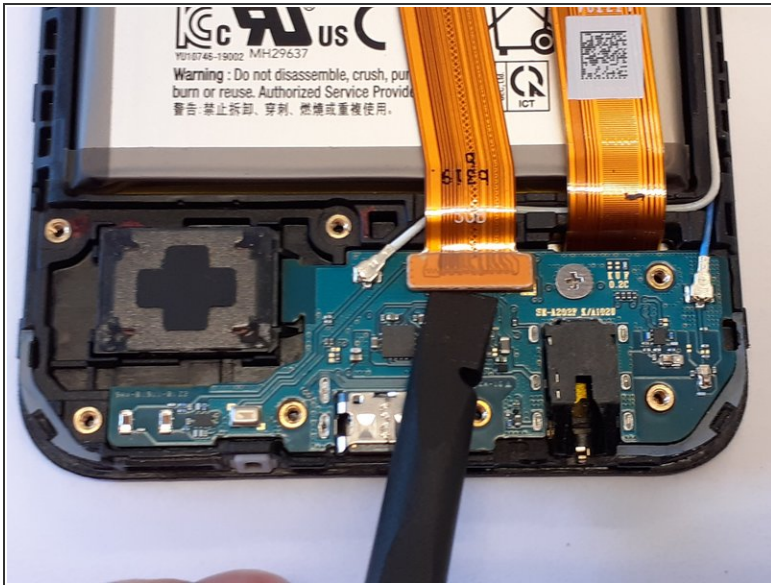
- Remove screws from daughterboard cover.
- 7 Phillips #00, 3mm length.

## Step 16



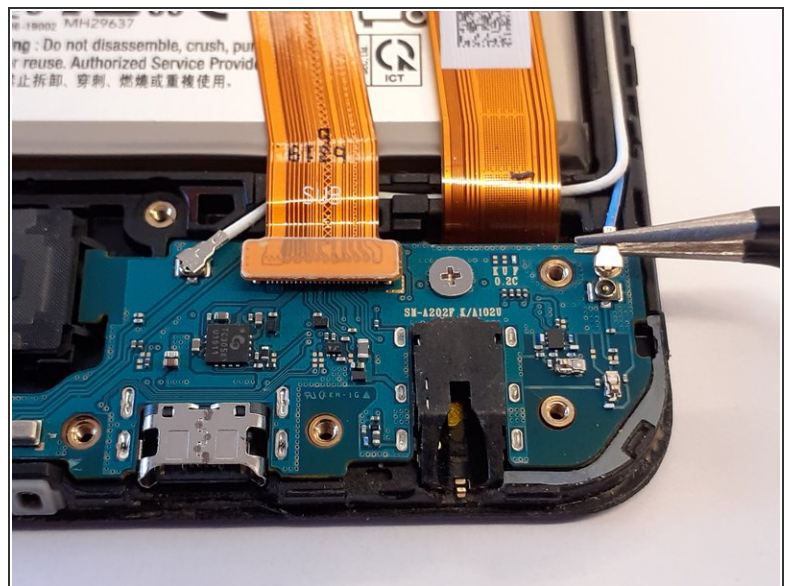
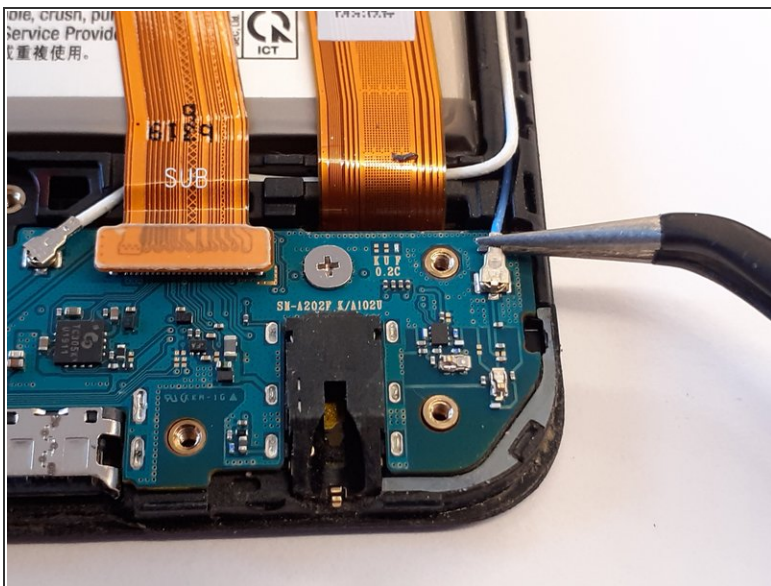
- ① There is a plastic tab securing the top left corner of the daughterboard cover.
- Use a pair of tweezers to lift up the bottom of the daughterboard cover to a ~30 degree angle.
- Pull the daughterboard cover straight out, away from the phone.

## Step 17 — Interconnect Flex



- Insert the flat end of a spudger under the interconnect flex connector, and gently pry it straight up.

## Step 18



- Using a pair of tweezers, gently disconnect one of the antenna connectors.

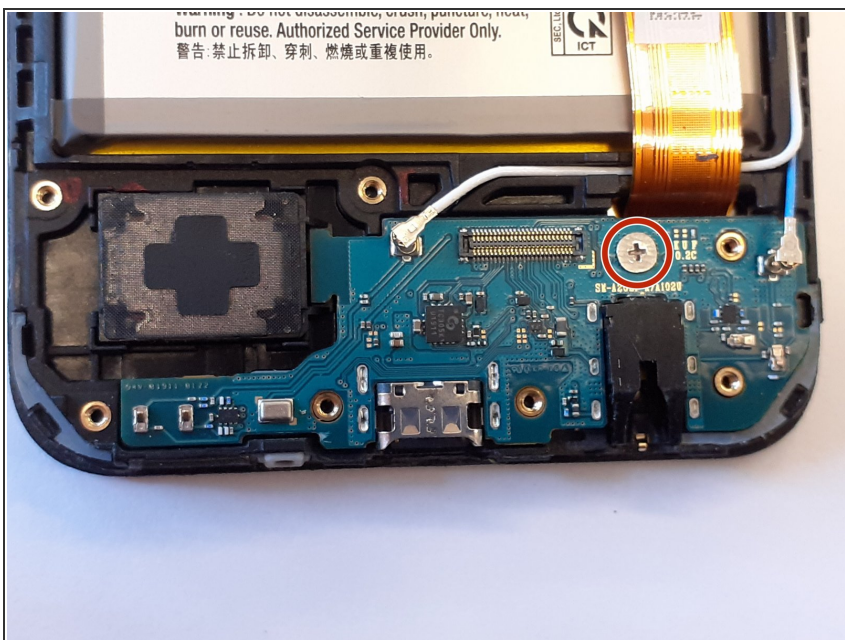


## Step 19



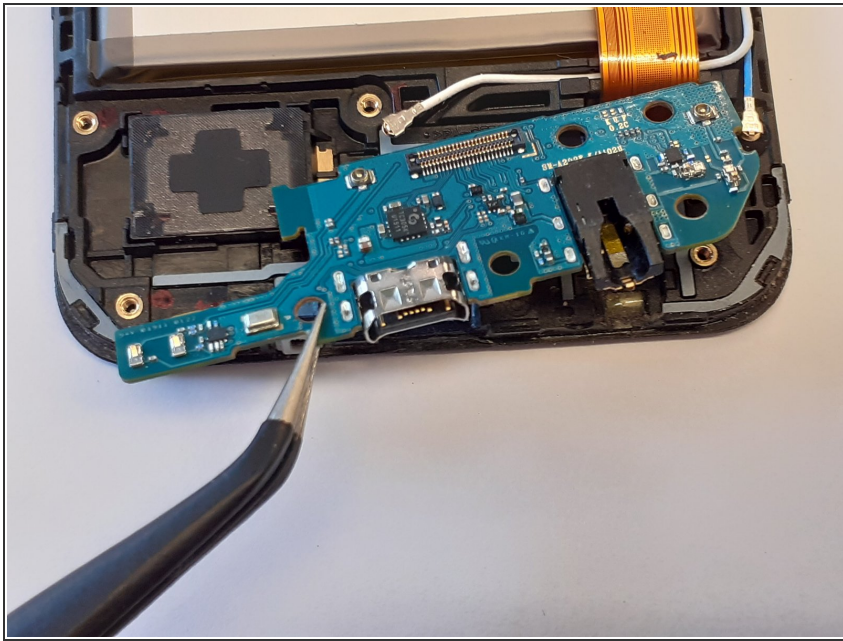
- Using a pair of tweezers, gently disconnect the other antenna connector.

## Step 20



- Remove screw from daughterboard.
  - 1 Phillips #00, 2mm length.

## Step 21 — Remove Daughterboard



- Remove the daughterboard.

To reassemble your device, follow these instructions in reverse order.