



Bella Linea CM1075T-ET Water Tube Valve Replacement

Use this guide to disassemble and replace the water tube valve in your Bella Linea (Model CM1075T-ET) coffee maker.

Written By: Katherine



INTRODUCTION

Disruption in the flow of water of your Bella Linea coffee maker (model CM1075T-ET) can have several causes, including clogged or damaged water tubes and valves. Signs that your coffee maker has clogged or damaged water tubes and valves include slower brewing than usual, not brewing the full amount of water put into the reservoir, and water leaking from the bottom of the coffee maker. Use this guide to access and clean or replace these malfunctioning parts.

Clogs in a coffeemaker are often caused by calcium buildup within the machine from constant water flow. This buildup can be minimized by using a descaling cleaner on a regular basis. Instructions on how to clean your coffee maker can be found at this [link](#). Before replacing any parts of your Bella Linea coffee maker, try using one of the cleaning methods linked above and see if it solves the issue you are having.

Sometimes, the calcium buildup is too large to be broken down chemically, or another issue is causing the disruption you are noticing. When this is the case, the valves and tubes that make up the water flow system need to be either deeply cleaned or replaced.

This guide will teach you how to access three of the water tubes in your Bella Linea coffee maker. One of these connects the water reservoir to the heating element. Another is part of the heating element, and the final tube connects the heating element to the water dispenser.

The tube that connects the water reservoir to the heating element is clear and hollow, while the tube that is part of the heating element is metal and curved. The tube going from the heating element to the water dispenser is clear and has a valve inside of it that only allows water to flow from the heating element to the water dispenser. This guide focuses on replacing the clear tube with the valve in it, which will be referred to as the water tube valve. You can see images of these tubes in steps 7 and 8.

Before buying a new water tube valve, try cleaning out each of the water tubes with a pipe cleaner or similar device. Run the water tube valve under a faucet to see if it is allowing water to flow. If the water tube valve is damaged or not allowing water to flow properly, use this guide to replace it.

In addition, thermal paste may only be necessary if the paste holding the heating element to the hot plate is removed or worn away. The thermal paste is not necessary if there is not corrosion or damage to it through the process of completing this guide or by other means.



TOOLS:

- [Phillips #1 Screwdriver](#) (1)
- [Plyer](#) (1)
- [GC-Extreme thermal paste](#) (1)



PARTS:

- [Water Tube Valve](#) (1)

Step 1 — Water Tube Valve




- Turn off the coffee maker by pressing the button labelled ON/OFF that is located on the top right of the front panel.
- ⓘ Make sure the light that is labelled ON is not illuminated before continuing to the next step.
- ☑ Before brewing coffee, brew a pot of hot water to check for leaks from the water tubes and valve. If leaks occur, go back and check to make sure the hose clamps were reattached correctly.

Step 2




- Unplug the coffee maker.

 If the coffee maker was recently turned on before you unplugged it, the hotplate may still be hot. Wait for 30 minutes to an hour before proceeding to the next step, in order to let the hot plate cool.

Step 3



- Set the coffee maker on its left side so the bottom is accessible.
-  Be sure to set the coffee maker on its left side, as this will make it easier for you to locate the water tube valve in later steps.
- Rotate the coffee maker clockwise until the bottom panel is facing you.

Step 4



- Use a Phillips #1 screwdriver to unscrew the four 3mm screws holding the bottom panel on.

Step 5



- Remove the bottom panel by pulling it towards you using the square tabs located on the right side of the panel.
- ⓘ You may have to use more force than anticipated, and will hear a pop or snap when the panel opens.

Step 6



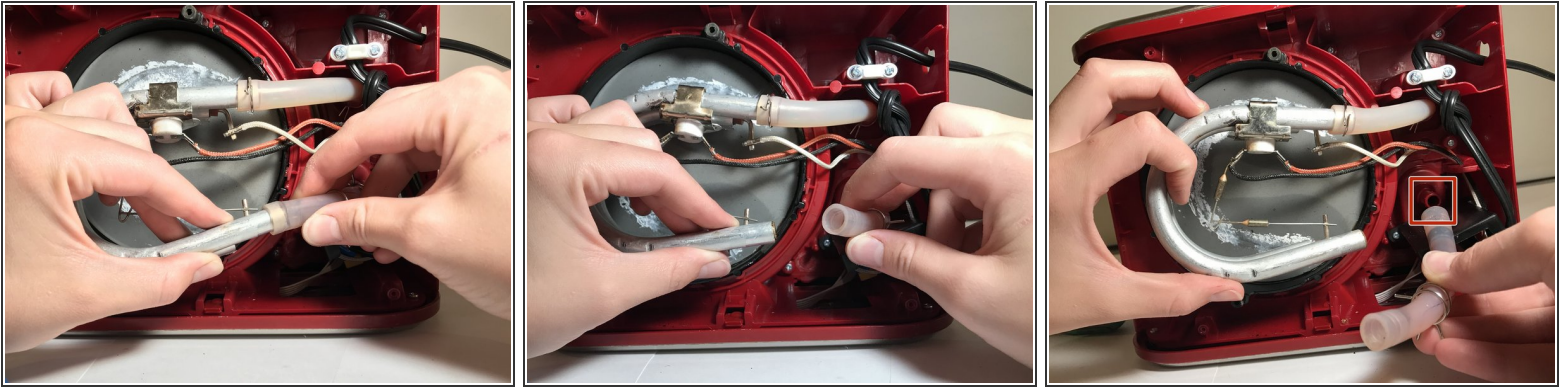
- Use a Phillips #1 screwdriver to remove the two 3mm screws holding the curved metal tube in place.

Step 7



- ❗ The water tube valve is the clear tube with parts inside of it, and is connected to the bottom of the curved metal tube. Be sure to remove this tube and not the clear tube that is hollow, which is connected to the top of the metal tube.
- Use pliers to pinch and remove the clamp holding the water tube valve onto the metal tube.
- Rotate the metal tube to the right so it is perpendicular to the bottom of the coffee maker.
- Use pliers to pinch and remove the second clamp attaching the water tube valve to the connection of the water dispenser.
- ☑ Be sure to reattach the hose clamps when reassembling. This reduces the potential risk of leaks.

Step 8



- Detach the water tube valve from the metal tube.
- Detach the water tube valve from the water dispenser connector.
- ☑ Before attaching the new water tube valve, test which way the valve allows water to flow. Try blowing air into one end of the tube. The end that you were able to blow air through connects to the metal tube.

To reassemble your device, follow these instructions in reverse order.

After finishing the reassembly of your coffee maker, brew a pot of water to clean the new water tube valve and confirm that everything is working properly.