



# Sonim XP5S Dual Sim XP5800 Rugged Cell Phone Battery Replacement

Replace the battery, or SIM card, or SD card in the XP5800

Written By: Timothy McEvoy



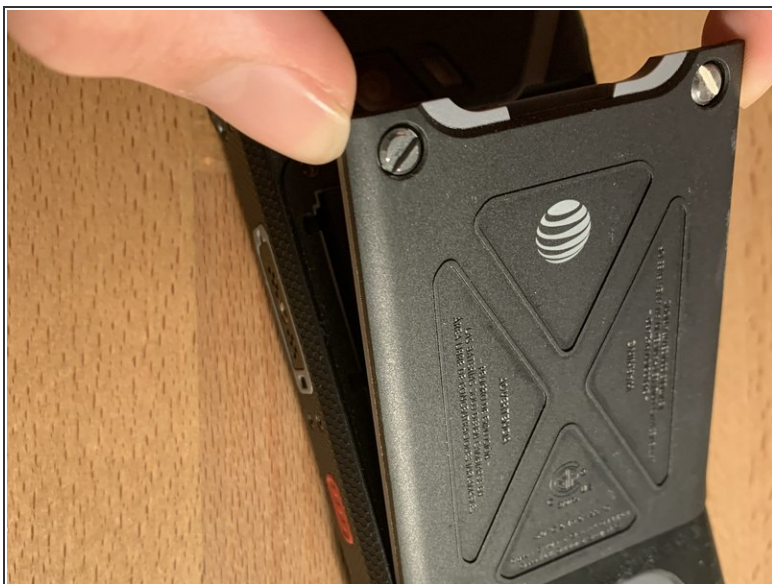


## Step 1 — Battery/SIM/SD replacement



- Turn the device over to its back
- Notice the two screws on the back. These are the screws we will need to unscrew.

## Step 2



- After unscrewing them, lift up the protective back shield and put it to the side.

### Step 3



- In the gap at the top of the battery, pull up. This will pull out the battery.
- Put the battery to the side.

### Step 4



- You have removed the battery and gained access to the SD and sim trays.
- Here you can replace, remove, or insert new SD/sim cards or put a new battery in where the old one was.

To reassemble your device, follow these instructions in reverse order.