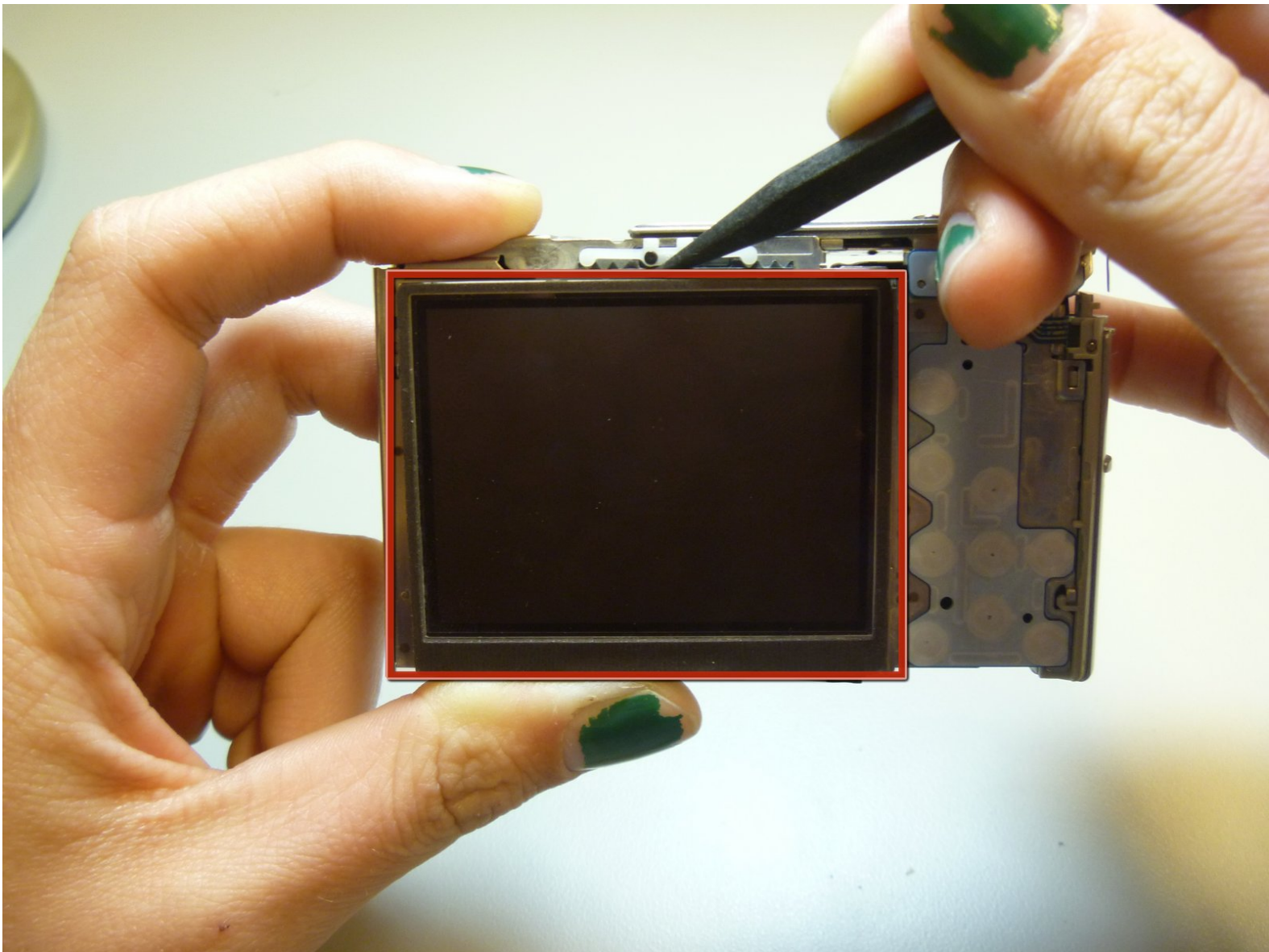




# Sony Cyber-shot DSC-T9 LCD Replacement

This guide gives instructions on how to installed a new LCD onto the Sony Cyber-shot DSC-T9 camera.

Written By: Stephannie Allen



---

## INTRODUCTION

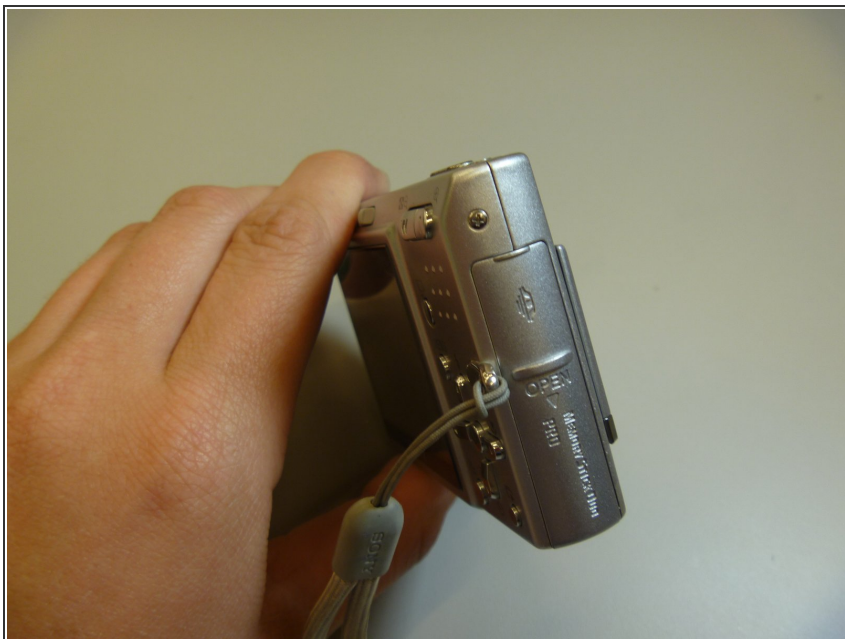
This guide provides access to the LCD of the camera, which is necessary to remove for many other parts. Replacing the LCD is a common procedure for this camera.

---

### TOOLS:

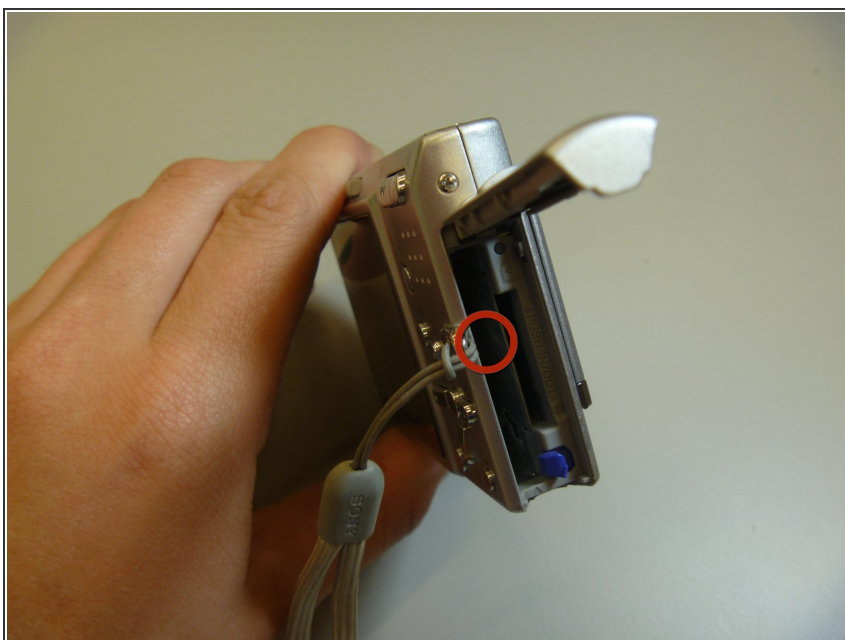
- [Phillips #00 Screwdriver](#) (1)
  - [Spudger](#) (1)
  - [Tweezers](#) (1)
  - [iFixit Opening Tools](#) (1)
-

## Step 1 — Battery



- The battery cover is located on the right side of the camera.
- Slide the cover to expose the battery.

## Step 2



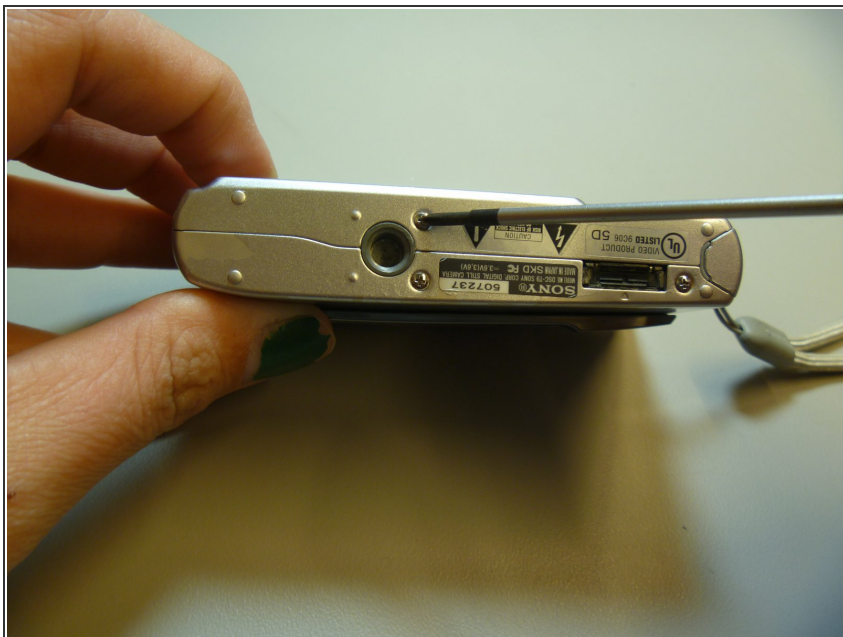
- Ensure that the battery lines up properly with the slot in the camera.
- Slide battery in.
- Slide cover closed.
- ⓘ Battery not shown

### Step 3 — Front Cover



- Remove screws from outside of camera. There are 6 screws total.
- 3 screws on underside.
- 1 screw on right side, near battery cover.
- 2 screws on left side.

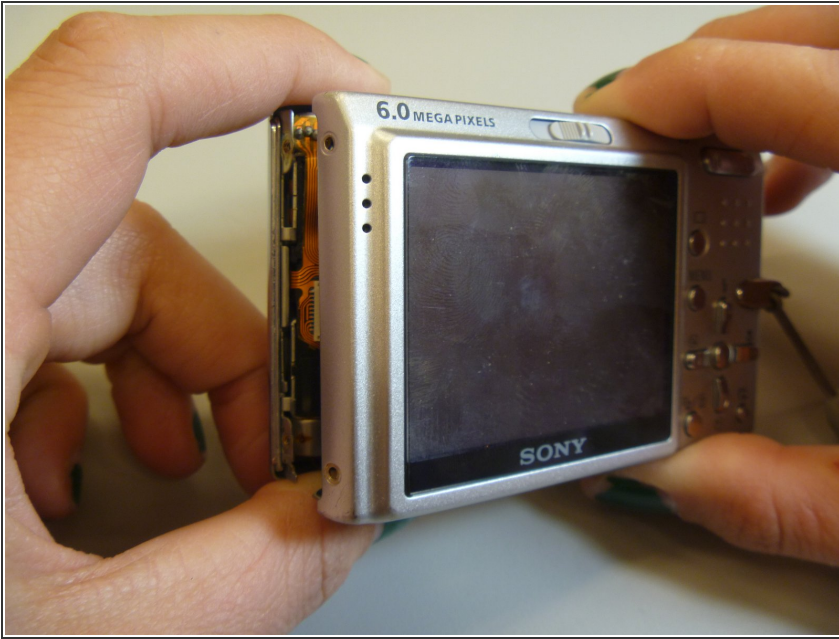
### Step 4



- Use screwdriver to remove screws.

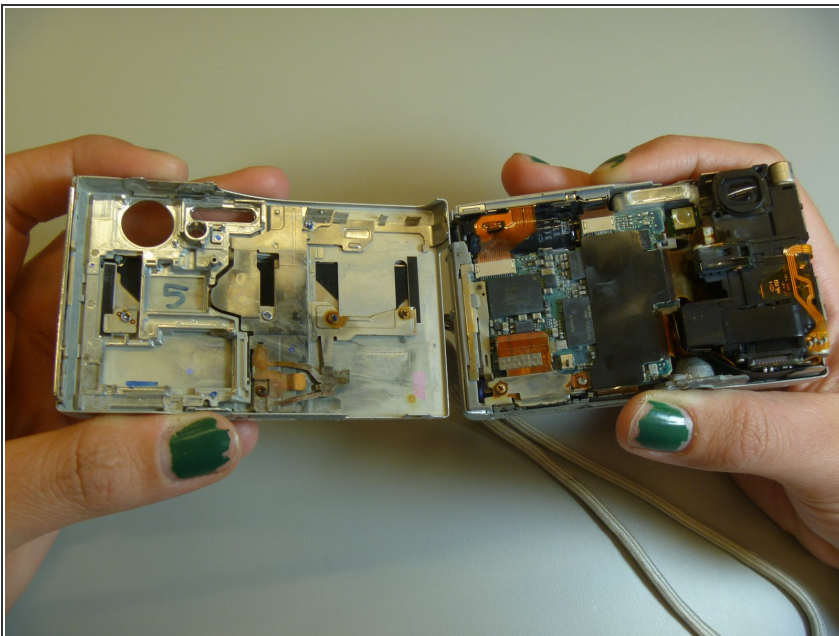


## Step 5



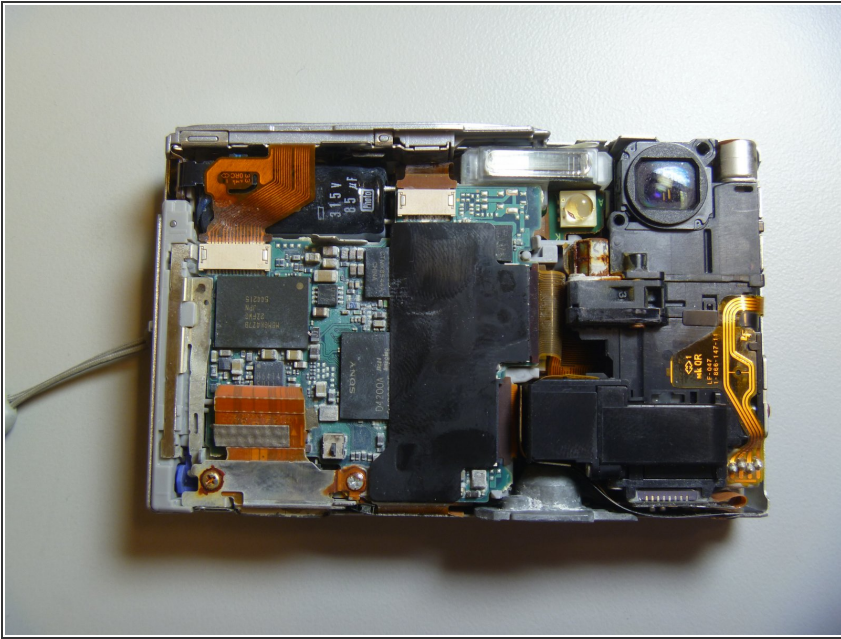
- Gently pull the front cover off of the main camera.
- All of the inner parts of the camera are attached to the back screen.

## Step 6



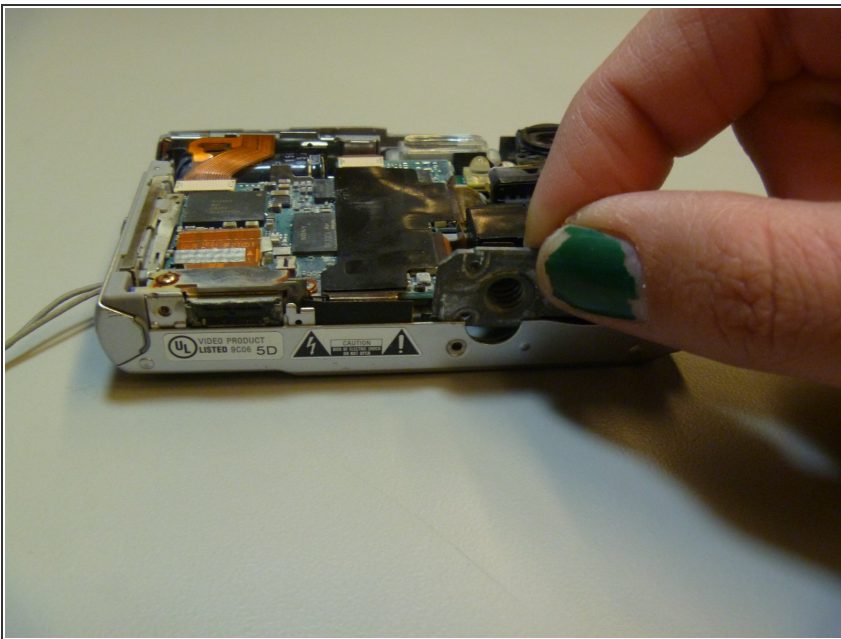
- The front cover is now removed from the camera and the internal hardware is now exposed.

## Step 7 — Back Cover



- This is the camera without the front cover.

## Step 8



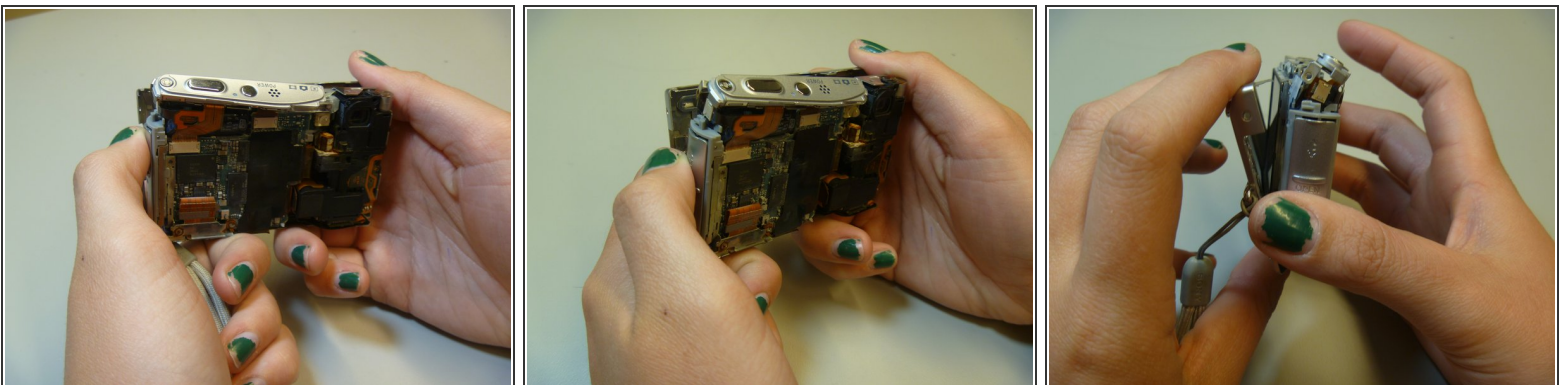
- Remove tripod piece located at the bottom of the camera. This piece should slide out with ease.

## Step 9



- Slide open the top panel. This is located on the top of the camera, where the power button and shutter button are.

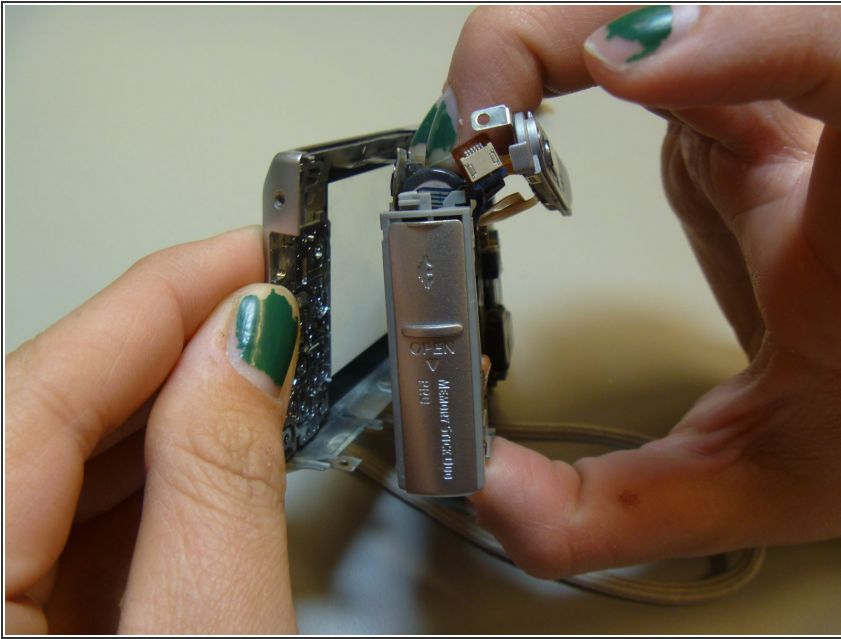
## Step 10



- Pull apart the inner hardware from the back case by prying on the left side.

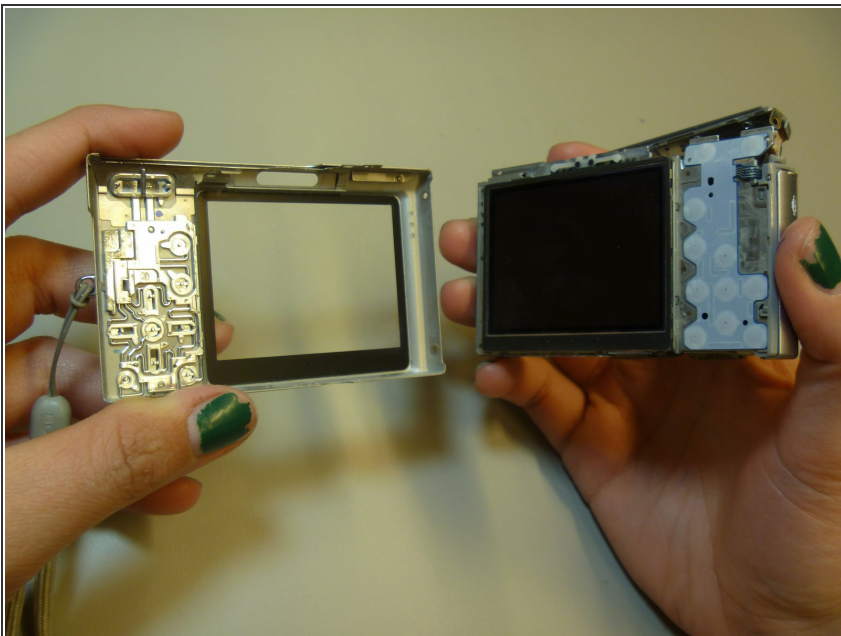


## Step 11



- Remove the back cover.

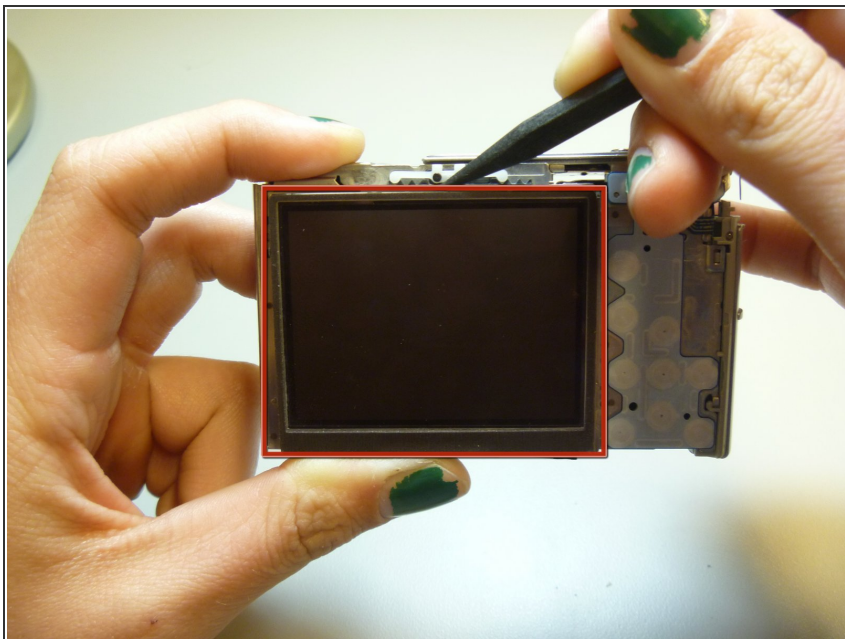
## Step 12



- The back cover is now removed from the internal hardware.

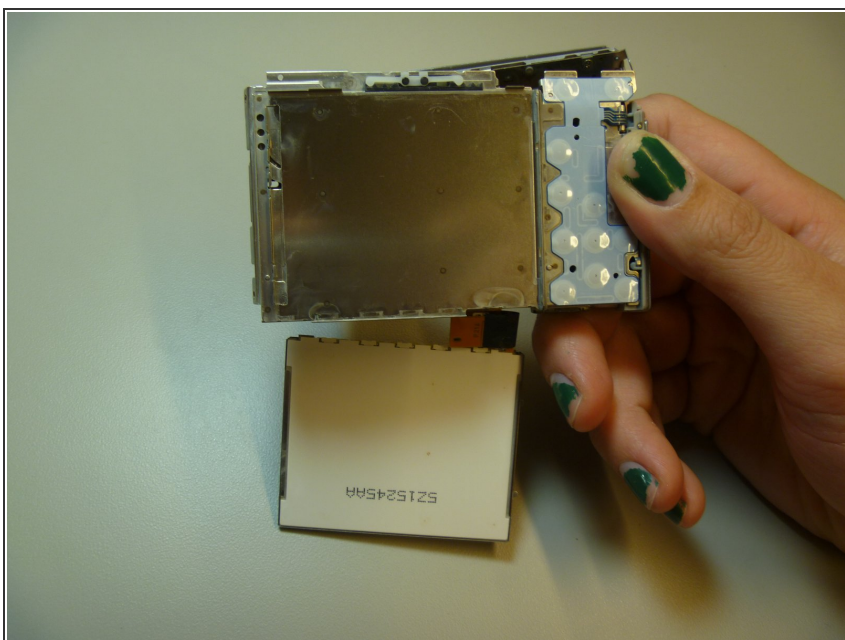


## Step 13 — LCD



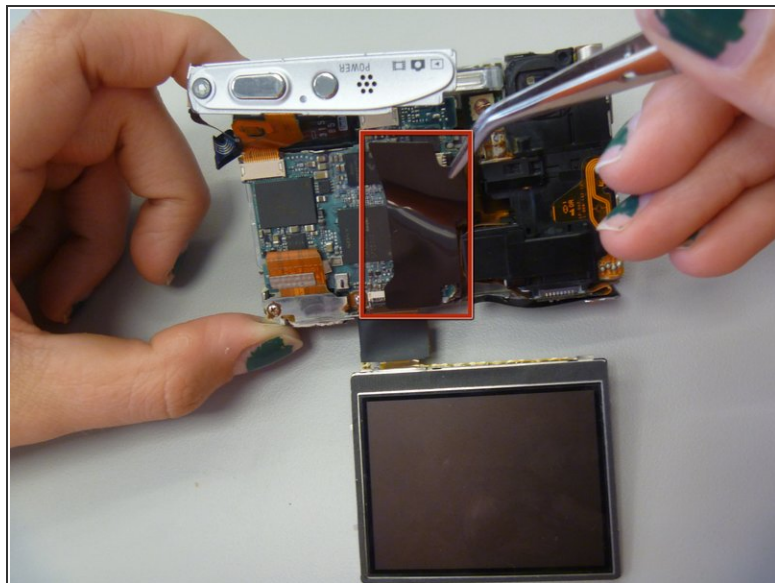
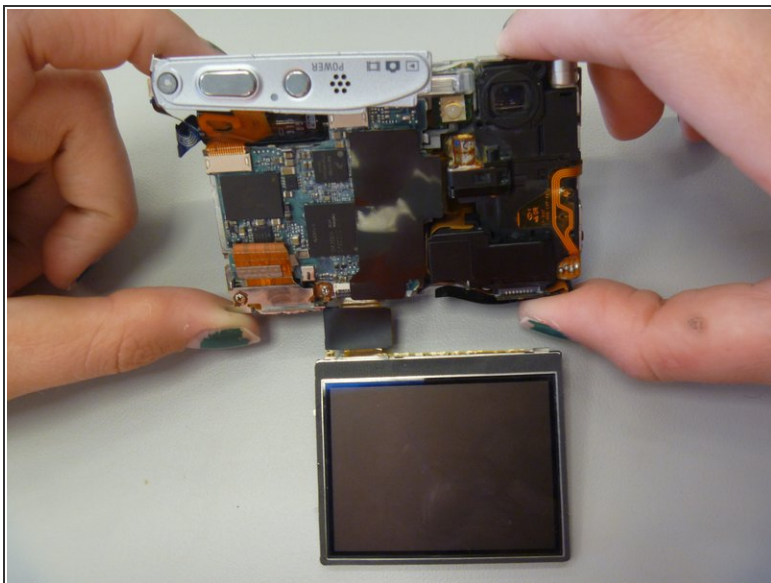
- Use the spudger to pry the LCD from the camera.

## Step 14



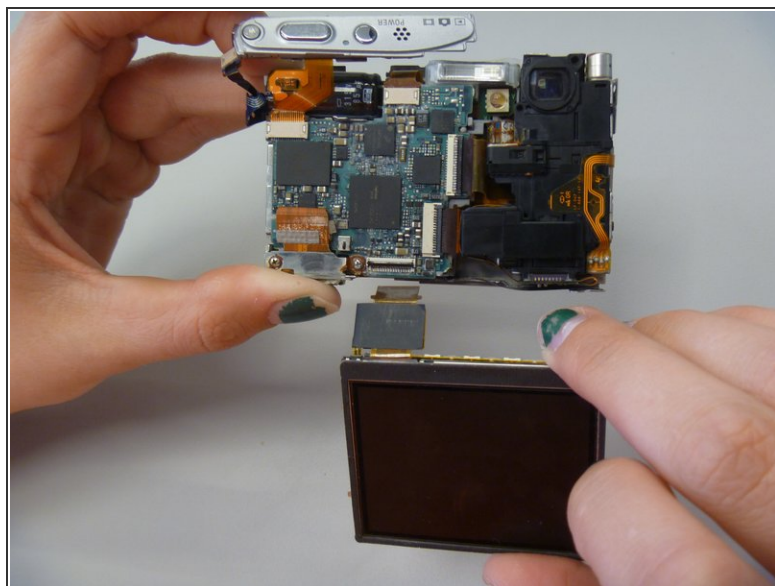
- The LCD is now removed from the camera, although attached by a ribbon at the bottom of the camera.

## Step 15



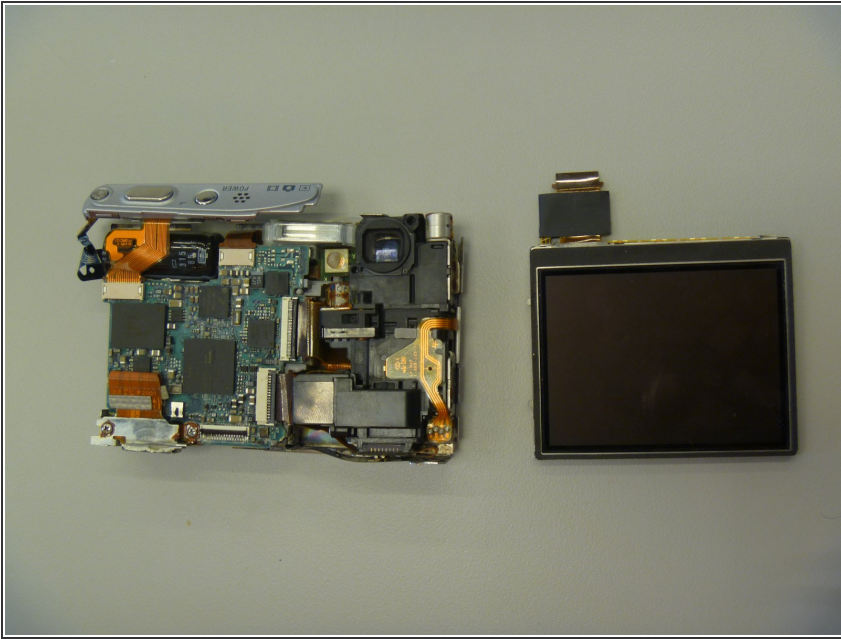
- Flip camera to other side.
- Use tweezers to peel off black sticker, located in middle of the motherboard.

## Step 16



- Use pry stick to pop out LCD connector ribbon, also called the ZIF connector.

## Step 17



- The LCD is now removed from the camera.

To reassemble your device, follow these instructions in reverse order.