

# Dell Latitude E6330 Memory Chip (RAM) Replacement

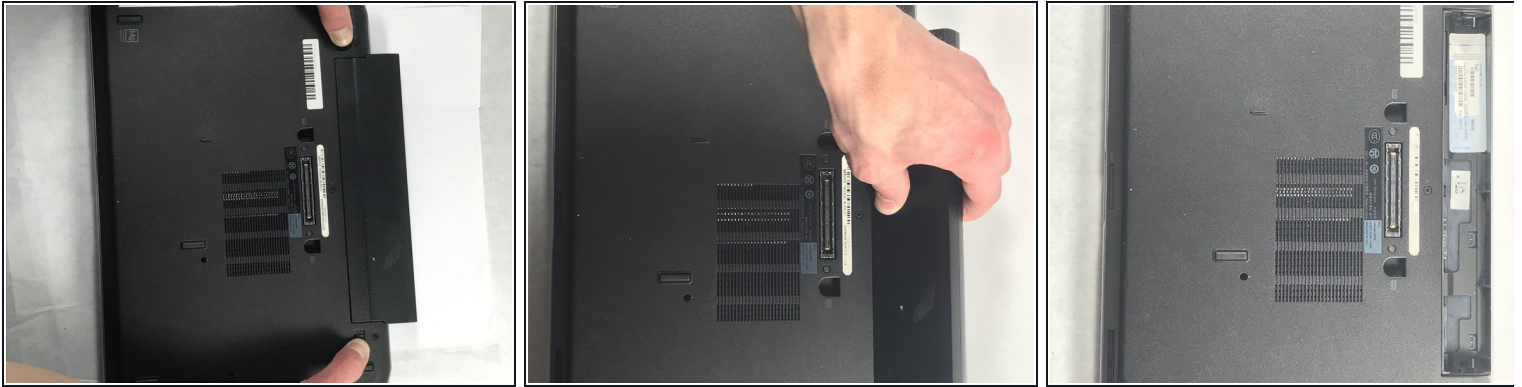
Written By: Vaasavan

## Step 1 — Battery



- Turn off computer by holding down the power button

## Step 2



- Slide latches out to unlock and remove battery.

## Step 3 — Remove screws



**⚠ Shut down your computer.  
Disconnect all power sources before  
opening the computer cover or  
panels.**

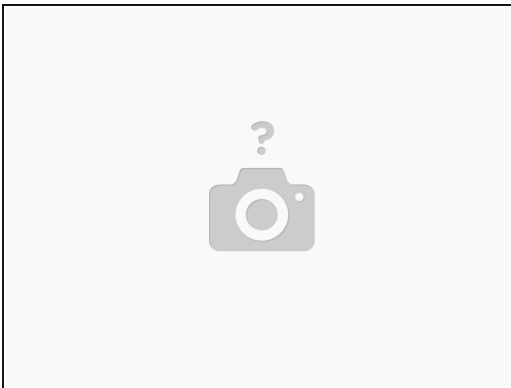
- Remove the screws that secure the base cover to the computer.

#### Step 4 — Remove base cover



- Lift the base cover to remove it from the computer.

#### Step 5 — Align base cover; screw base cover in.



- Place the base cover to align with the screw holes on the computer.
- Tighten the screws to secure the base cover to the computer.

---

To reassemble your device, follow these instructions in reverse order.