



# MacBook Air 13" Retina Display 2019 Trackpad Replacement

Use this guide to replace the trackpad in a...

Written By: Adam O'Camb



# INTRODUCTION

Use this guide to replace the trackpad in a 2019 MacBook Air.

---

## TOOLS:

[iFixit Opening Picks \(Set of 6\)](#) (1)  
[P5 Pentalobe Screwdriver Retina MacBook Pro and Air](#) (1)  
[Tweezers](#) (1)  
[Spudger](#) (1)  
[T3 Torx Screwdriver](#) (1)  
[T4 Torx Screwdriver](#) (1)  
[T5 Torx Screwdriver](#) (1)

## PARTS:

[MacBook Air 13" \(Late 2018-2019\)](#)  
[Trackpad](#) (1)  
[MacBook Air 13" \(Late 2018-Mid 2019\)](#)  
[Trackpad Cable](#) (1)  
[MacBook Air 13" \(Late 2018-Mid 2019\)](#)  
[Trackpad Cable Bracket](#) (1)

---

## Step 1 — Remove the screws securing the lower case



- i** Before starting this procedure, you should disable your Mac's **Auto Boot** feature. Auto Boot powers on your Mac when you open the lid, and may be accidentally triggered during disassembly. [Use this guide](#) to disable Auto Boot.
- If your MacBook is running Big Sur v11.1 or later, disabling Auto Boot may not work. You can proceed normally, but make sure to disconnect the battery as soon as you're inside.

**⚠** Completely power off and unplug your MacBook Air before you start. Close the display and flip the entire laptop upside-down.

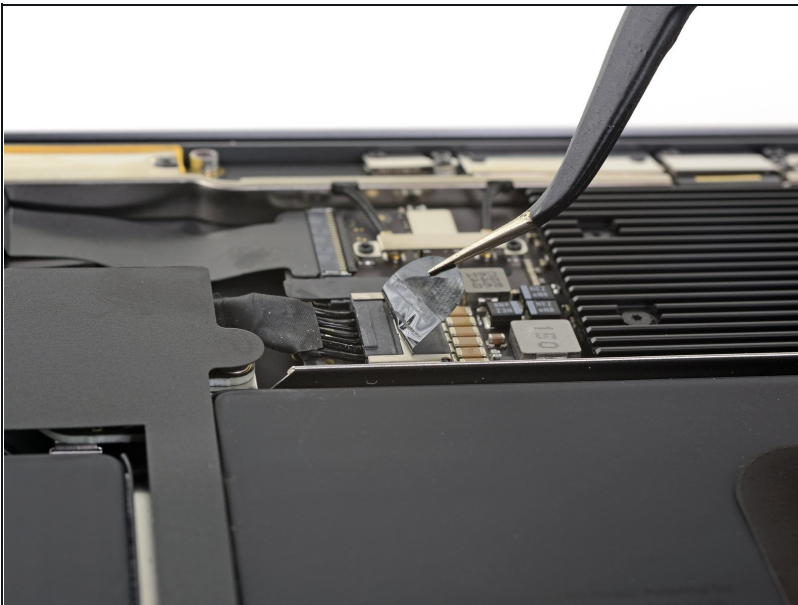
- Use a P5 driver to remove the following screws:
  - Two 7.9 mm screws
  - Two 7.1 mm screws
  - Six 2.6 mm screws

## Step 2 — Remove the lower case



- Wedge your fingers between the display and the lower case and pull upward to pop the lower case off the Air.
- Remove the lower case.
- ★ After reassembly, your MacBook might not turn on until it's connected to a power source (a low power phone charger may work). To test your repair, plug in your charger, allow two minutes for your MacBook to turn on, and check that everything works as expected.

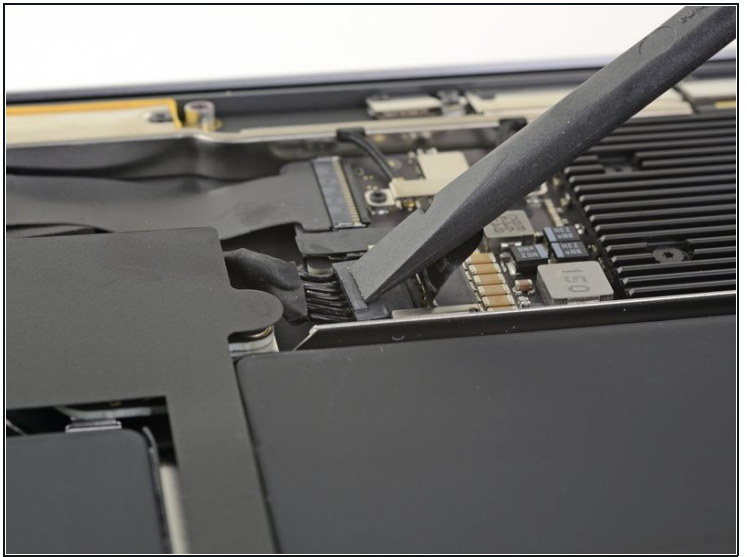
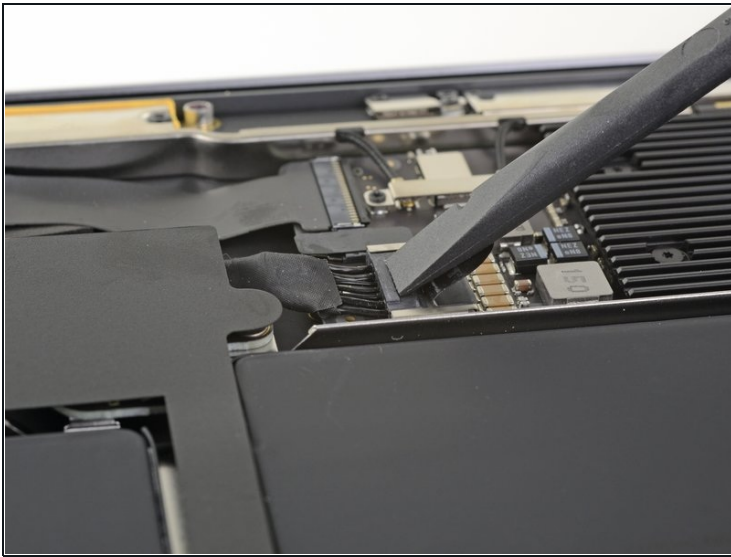
## Step 3 — Disconnect the battery



- Peel back the tape covering the battery connector enough to reveal the connector underneath.

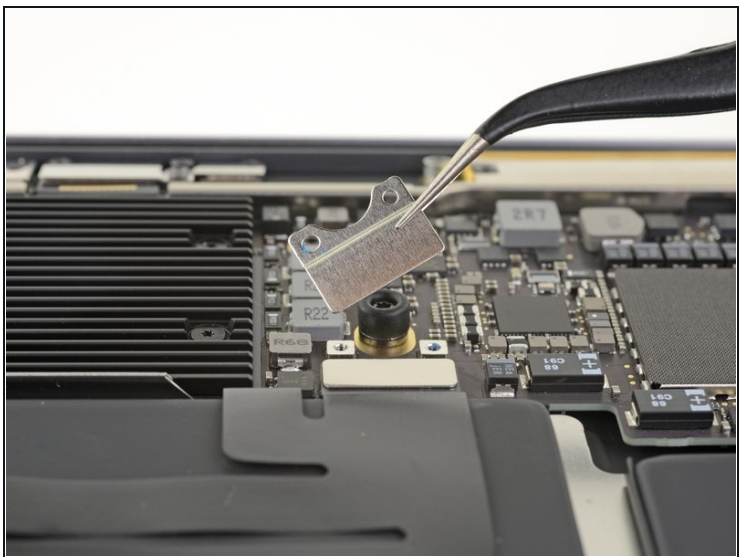
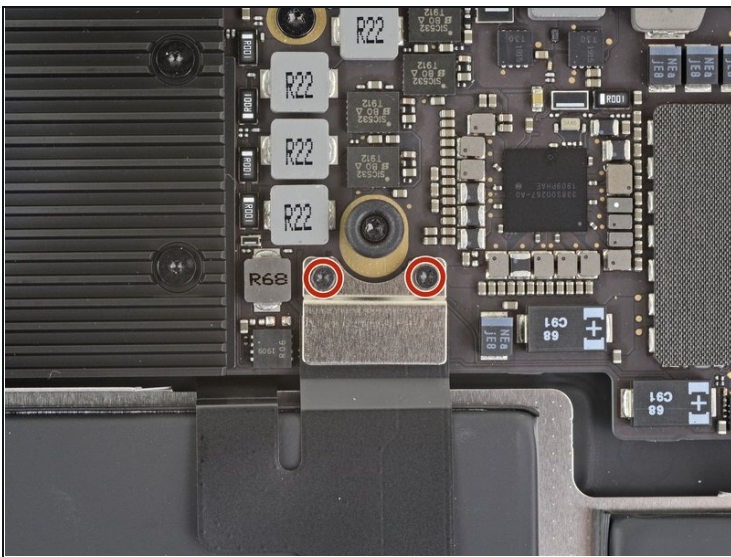


## Step 4



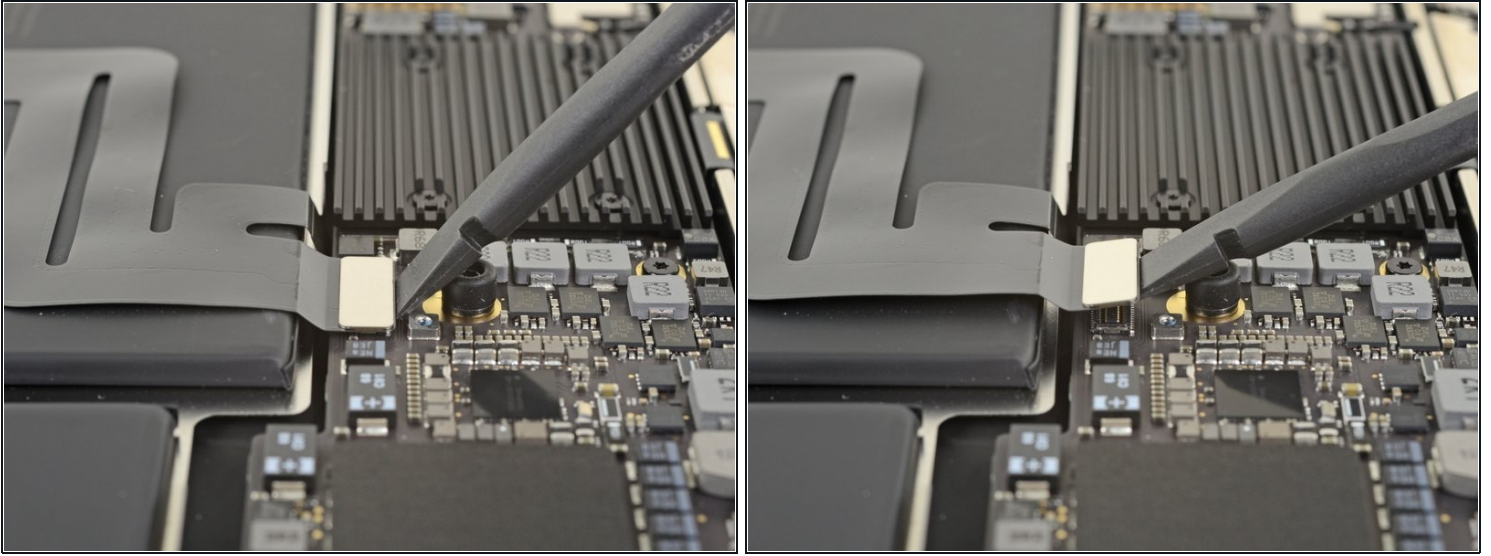
- Use a spudger to slide the battery connector parallel to the logic board and out of its socket on the logic board.

## Step 5 — Disconnect the logic board



- Use a T3 Torx driver to remove the two 1.4 mm screws securing the trackpad connector bracket.
  - ⓘ Depending on the condition of your bits, a T4 Torx driver may fit better.
- Remove the trackpad connector bracket.

## Step 6



- Use the flat end of a spudger to pry the trackpad cable connector up and out of its socket.

## Step 7

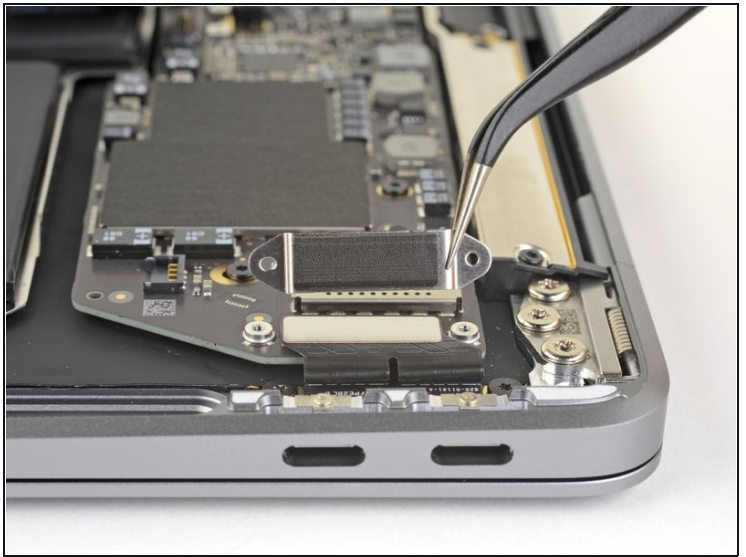


ⓘ If the left speaker is already disconnected, skip this step.

- Slide the tip of a spudger underneath the left speaker cable and pry straight up to disconnect the speaker.
- With the connector disconnected, slide the flat end of a spudger under the cable to separate the adhesive securing the cable to the logic board.



## Step 8



- Use a T3 Torx driver to remove the two 1.3 mm screws securing the USB-C port connector bracket.
- Remove the USB-C connector bracket.

## Step 9



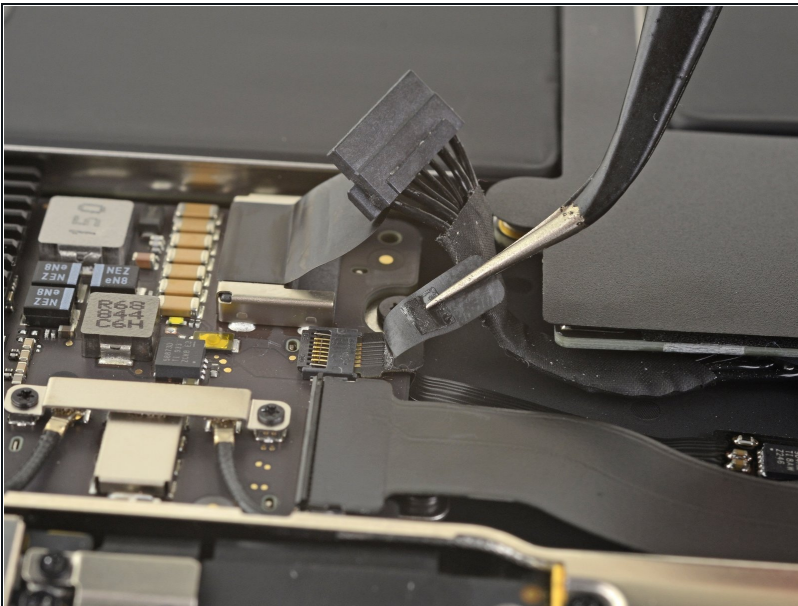
- Use the flat end of a spudger to pry the USB-C cable connector up and out of its socket on the logic board.

## Step 10



- Use a spudger to lift up the small locking flap on the sound board cable's [ZIF connector](#).
- Slide the sound board cable out of the ZIF connector.

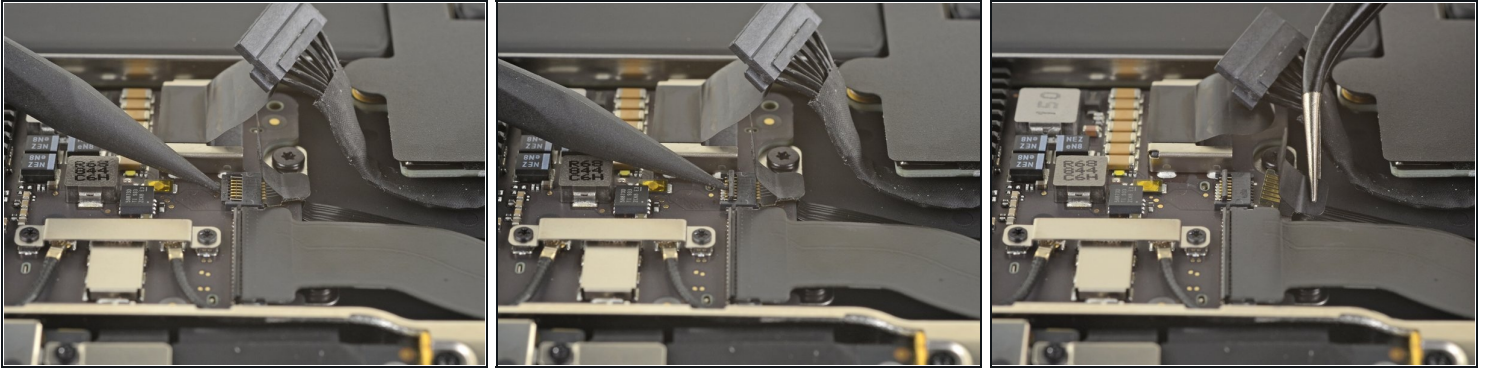
## Step 11



- Peel back the black tape covering the fan cable connector.

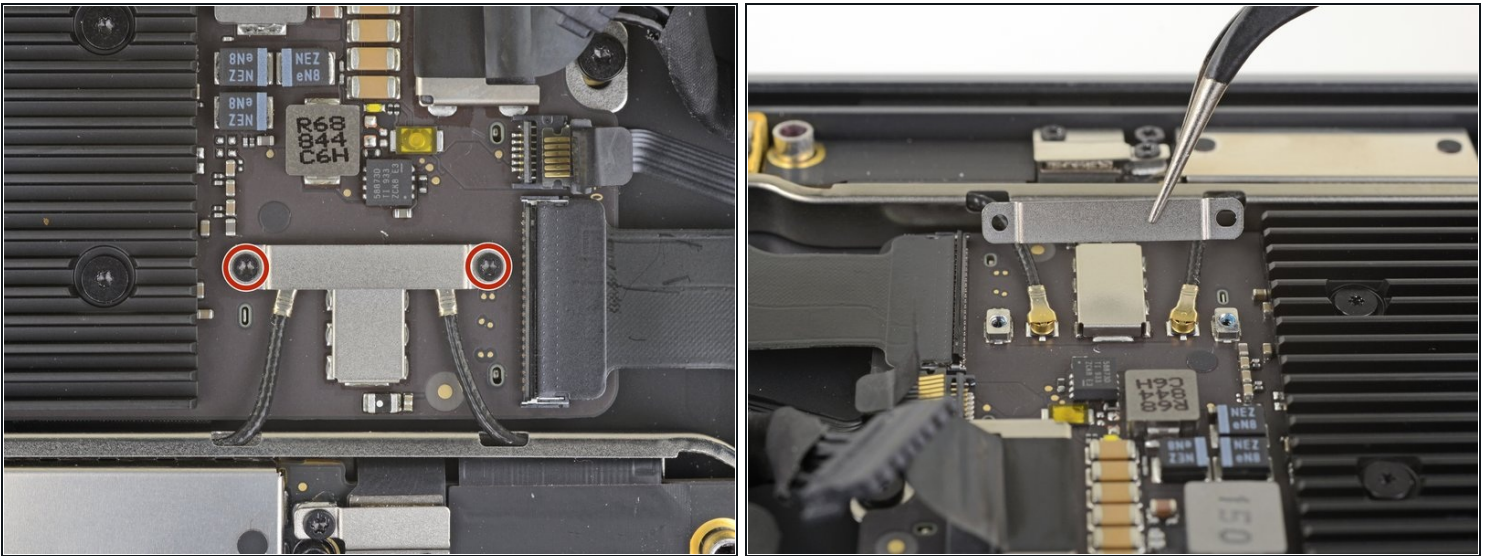


## Step 12



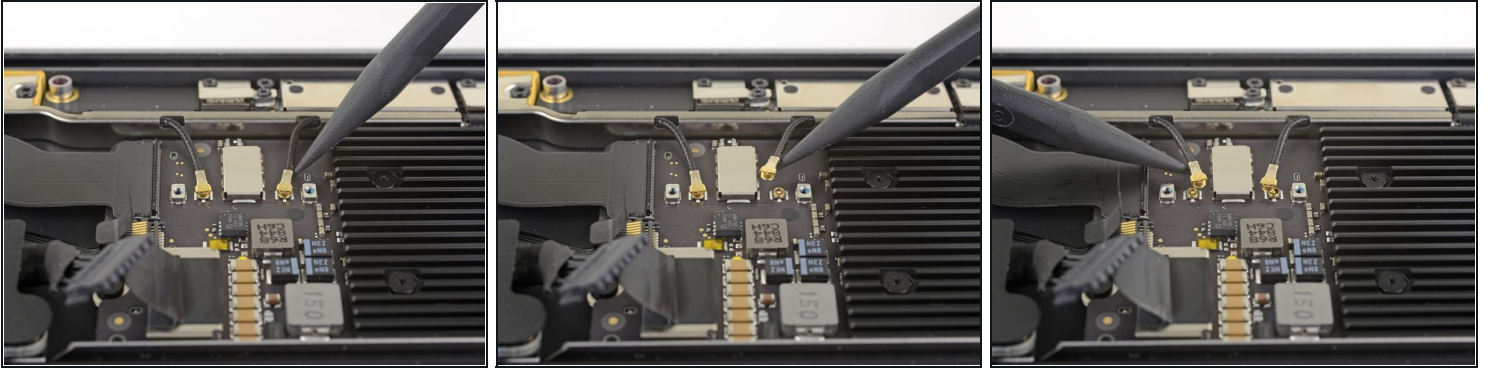
- Use the tip of a spudger to lift up the locking flap on the fan cable's ZIF connector.
- Slide the fan cable out of the ZIF connector.

## Step 13



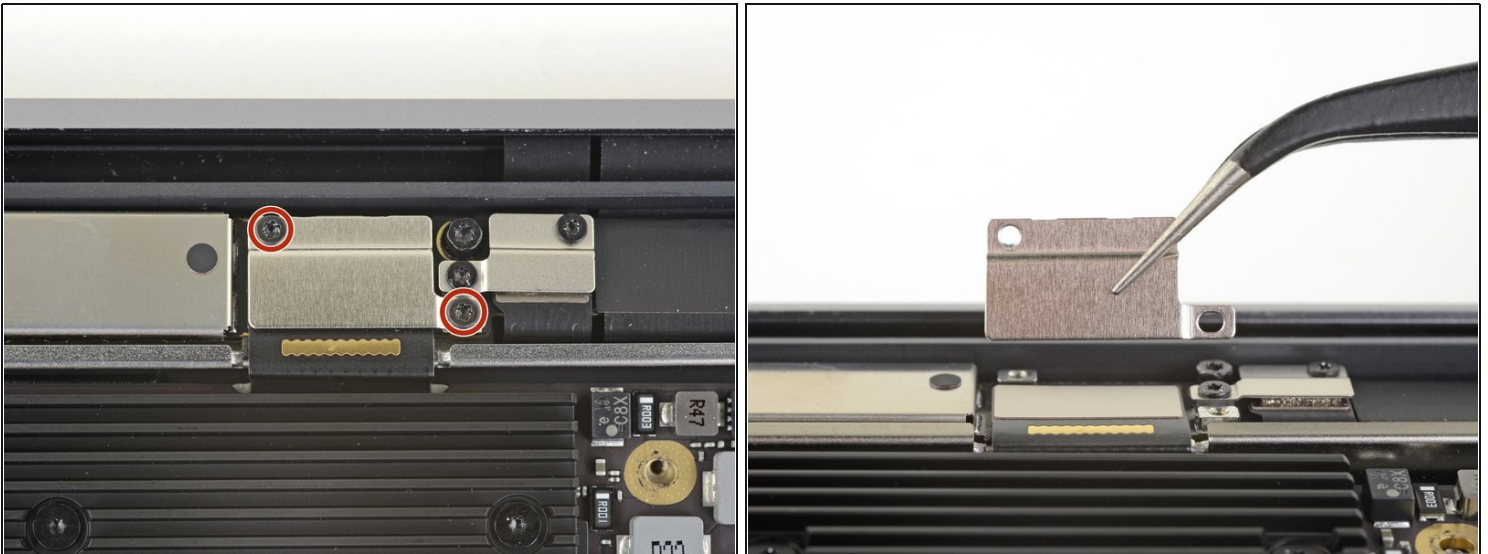
- Use a T3 Torx driver to remove the two 1.4 mm screws securing the antenna cable bracket.
- Remove the antenna cable bracket.

## Step 14



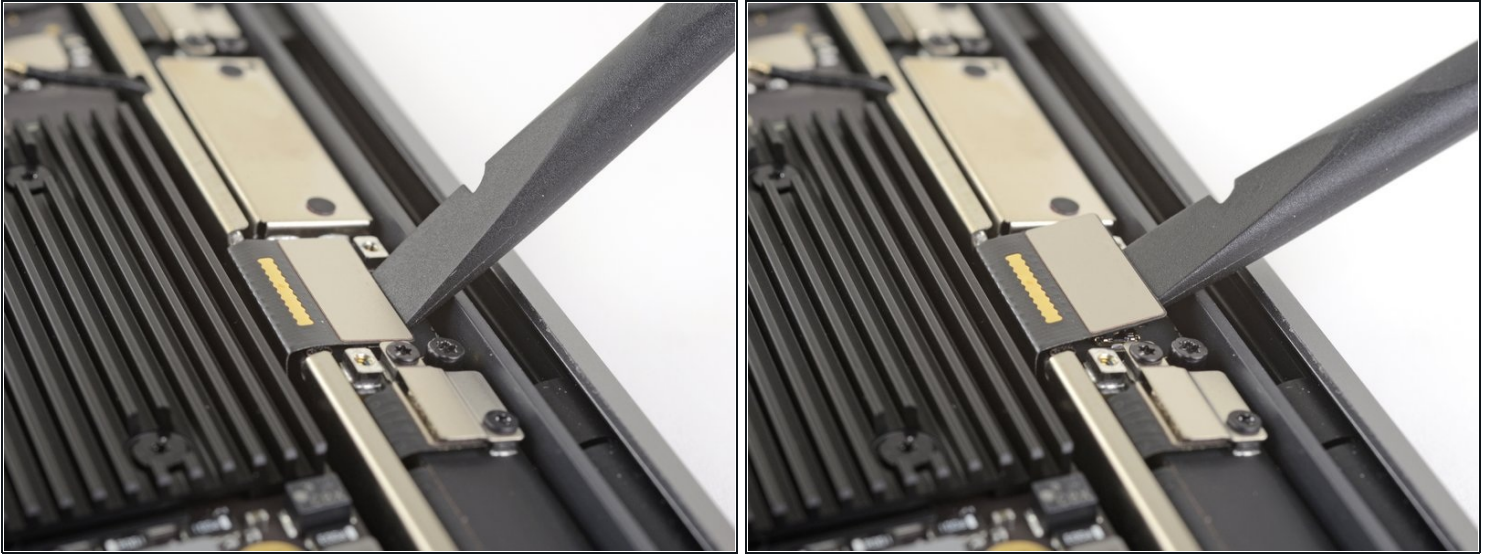
- Insert the point of a spudger under one of the antenna cables close to the connector. Pry straight up to disconnect the cable.
- Repeat for the other antenna cable.

## Step 15



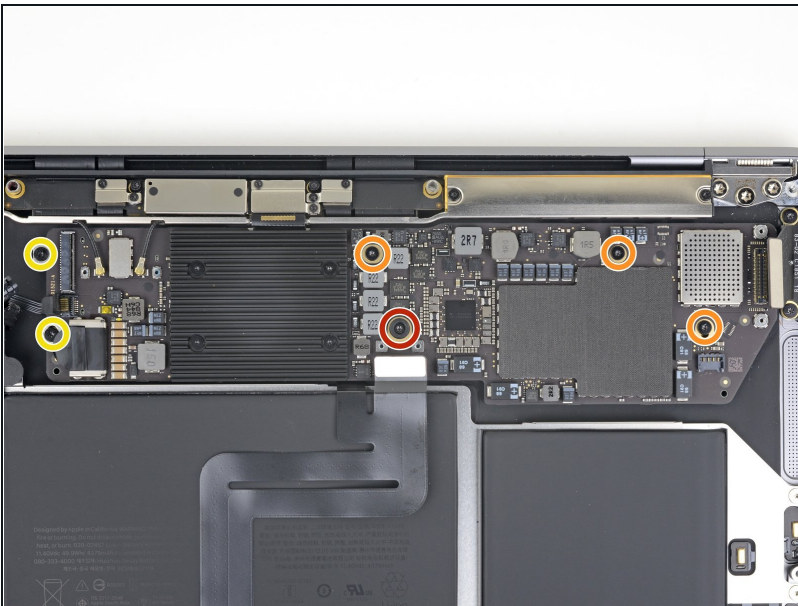
- Use a T3 Torx driver to remove the two 1.5 mm screws securing the display cable connector bracket.
- Remove the display cable connector bracket.

## Step 16



- Use the flat end of a spudger to pry up the display cable connector.

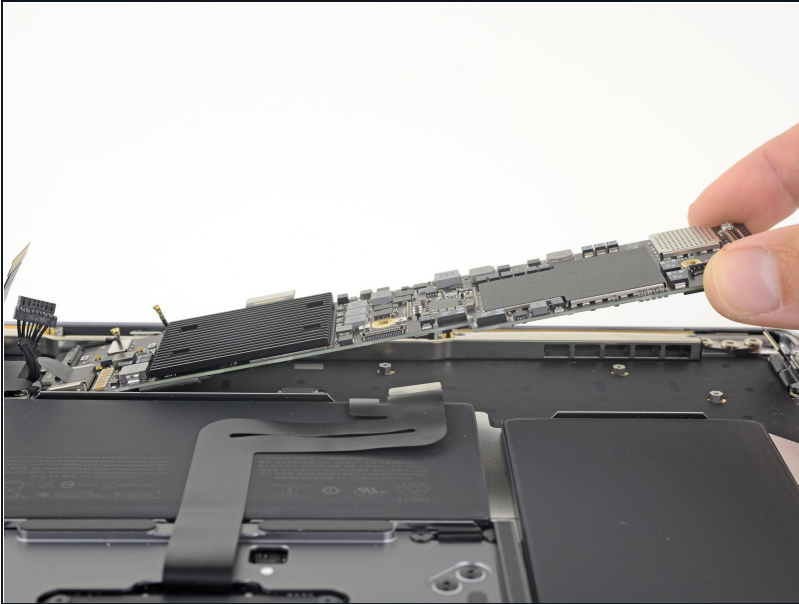
## Step 17 — Unscrew the logic board



- Use a T5 Torx driver to remove the following screws:
  - One 5.5 mm screw
  - Three 2.6 mm screws
  - Two 1.9 mm screws

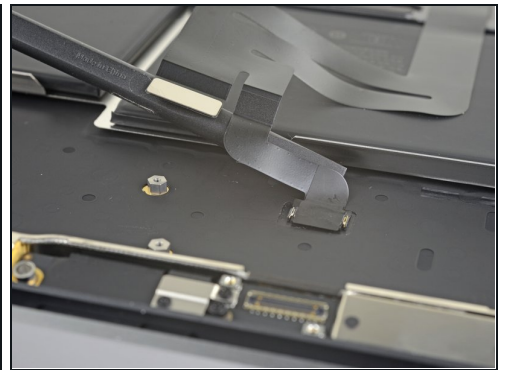
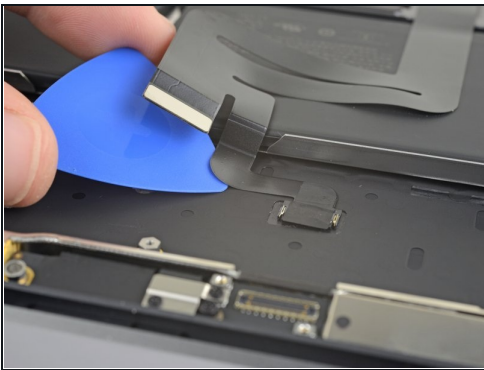


## Step 18 — Remove the logic board



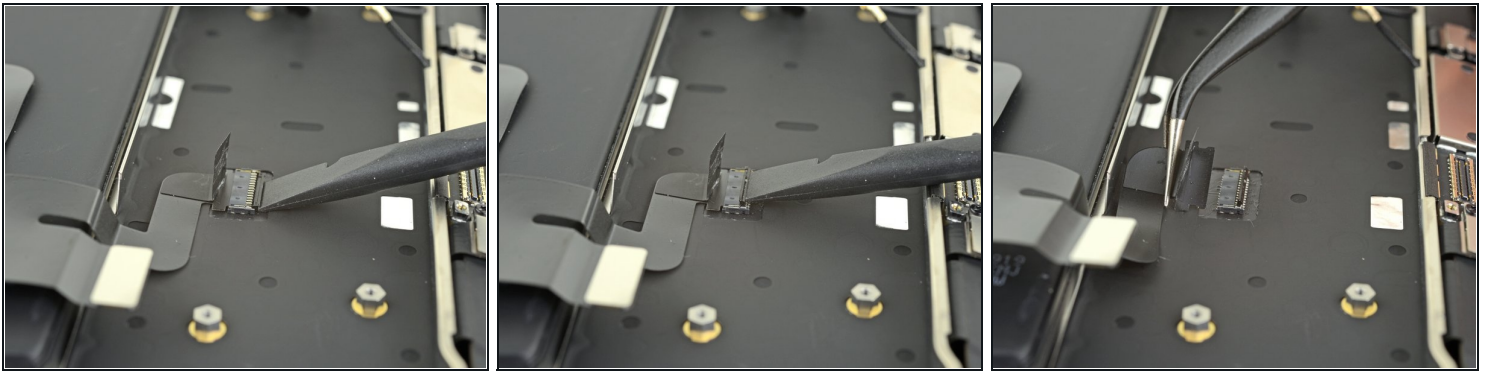
- Remove the logic board.

## Step 19 — Separate the trackpad cable adhesive



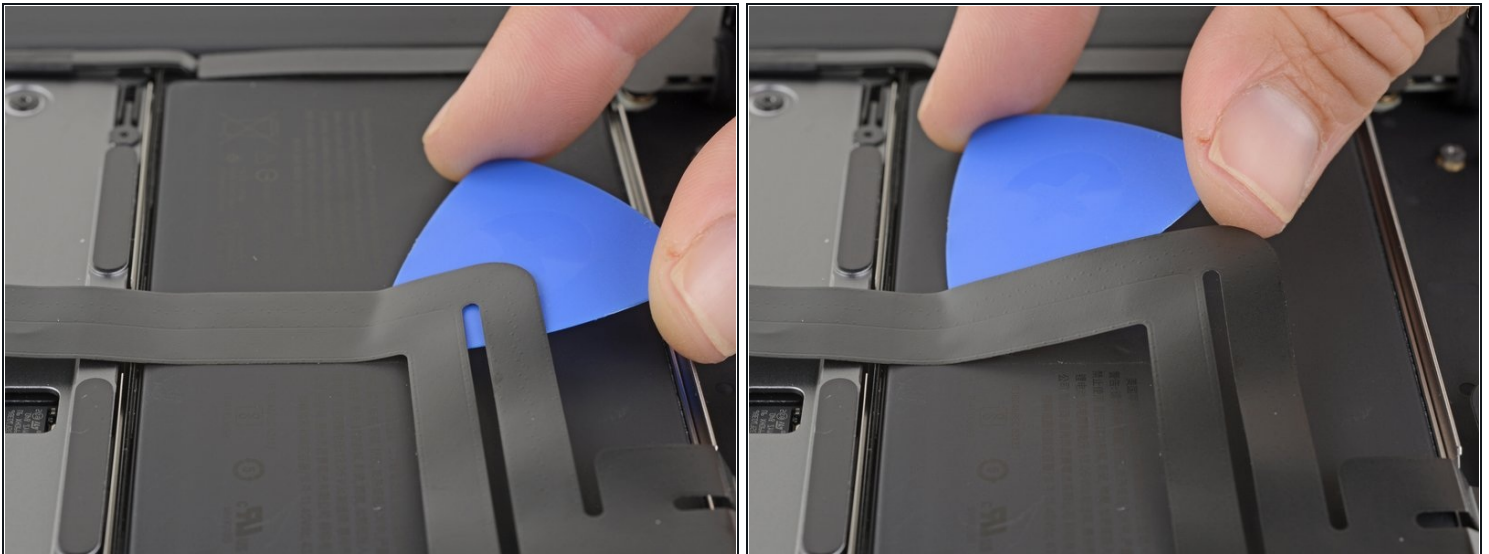
- Carefully slide an opening pick under the trackpad cable to separate the adhesive securing it to the upper case.
  - ⓘ If you have difficulty separating the adhesive, heat it slightly with an iOpener or hair dryer to soften the adhesive.

## Step 20 — Disconnect the trackpad cable



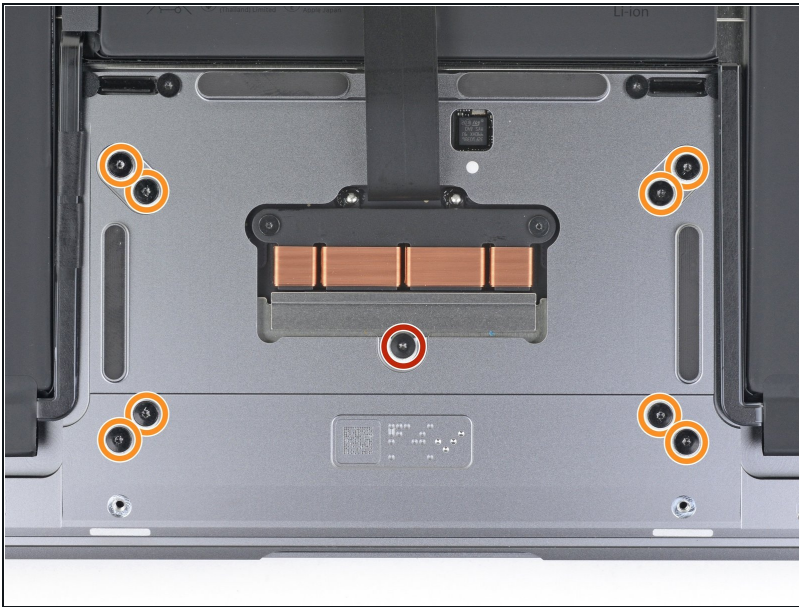
- Use the flat end of a spudger to lift the small locking flap on the trackpad ZIF connector.
- Slide the trackpad cable straight out of its connector.

## Step 21 — Separate the trackpad cable adhesive



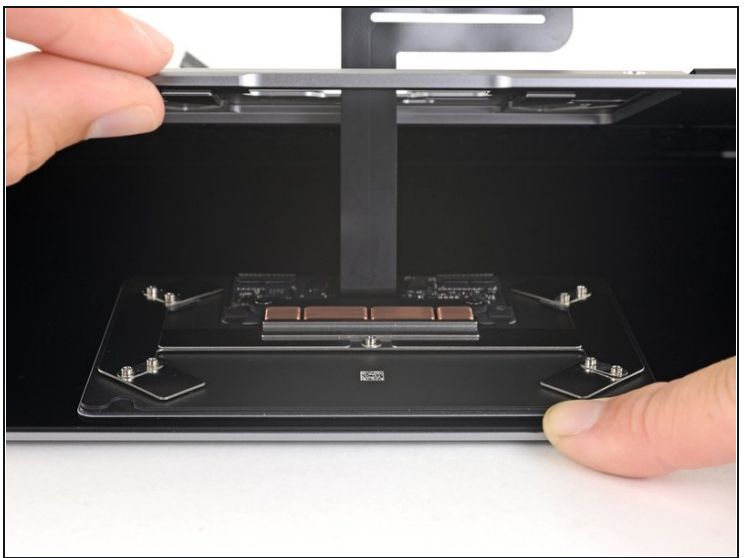
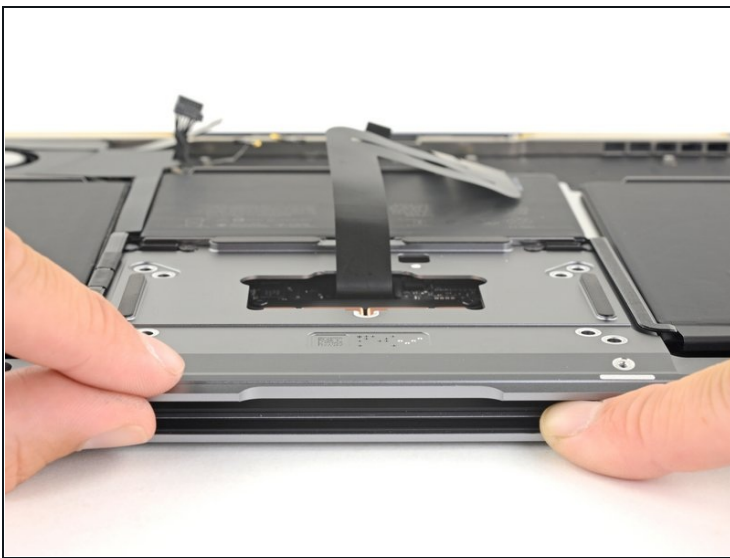
- Carefully slide an opening pick under the trackpad cable to separate the adhesive securing it to the battery.
  - ⓘ If you have difficulty separating the adhesive, heat it slightly with an iOpener or hair dryer. Be careful not to overheat the battery.

## Step 22 — Remove the trackpad



- Use a T5 Torx driver to remove the following screws securing the trackpad:
  - One 3.2 mm screw
  - Eight 3.1 mm screws

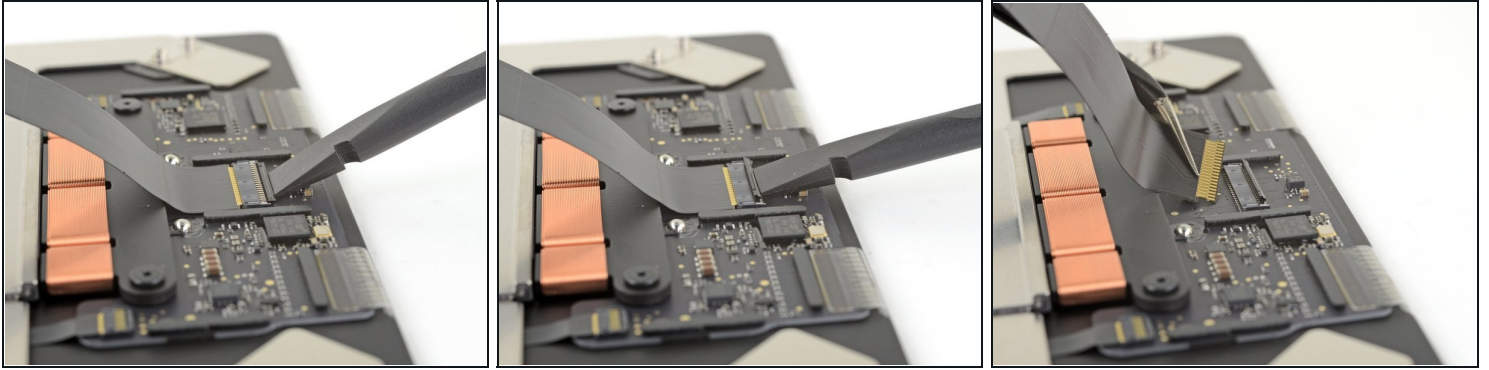
## Step 23



- With the laptop still lying screen-side down, carefully open the laptop. The trackpad will stay sitting on the display.
- Remove the trackpad from the MacBook. Take care not to scratch the display.



## Step 24 — Disconnect the trackpad cable



- Use the flat end of a spudger to lift the small locking flap on the trackpad's ZIF connector.
  - Slide the trackpad cable straight out of the ZIF connector.
- 

Compare your new replacement part to the original part—you may need to transfer remaining components or remove adhesive backings from the new part before installing.

**To reassemble your device, follow the above steps in reverse order.**

Take your e-waste to an [R2 or e-Stewards certified recycler](#).

Repair didn't go as planned? Check out our [Answers community](#) for troubleshooting help.