



# Huawei Watch 2 Battery Replacement

Use this guide to replace a worn-out or dead...

Written By: Dominik Schnabelrauch



# INTRODUCTION

Use this guide to replace a worn-out or dead battery in your Huawei Watch 2.

For your safety, discharge your battery below 25% before disassembling your Huawei Watch 2. This reduces the risk of a dangerous thermal event if the battery is accidentally damaged during the repair.

Note: If your battery is swollen, [take appropriate precautions](#).

Note: This guide instructs you to replace only the battery. However, if you want to replace the battery assembly, it's a different procedure and you can [find the appropriate battery assembly guide here](#). Make sure you have the correct part before starting this guide.

You'll need replacement adhesive to reattach components when reassembling the device.

---

## TOOLS:

Tweezers (1)  
[iFixit Opening Tool](#) (1)  
[T2 Torx Screwdriver](#) (1)  
[Spudger](#) (1)  
[iOpener](#) (1)  
[Phillips #00 Screwdriver](#) (1)

## PARTS:

[Huawei Watch 2/2 Pro Battery](#) (1)

---

## Step 1 — Huawei Watch 2 Opening Procedure



- Before starting repairs, take your watch off the charger and power it down.
- ⓘ Feel free to attach or remove the watch band as needed to provide more control as you make repairs.

## Step 2



- Remove the four Torx T2 screws (4.5 mm length).

## Step 3



- Use a pair of [tweezers](#) to remove the four plastic covers sitting next to the watch band holders.

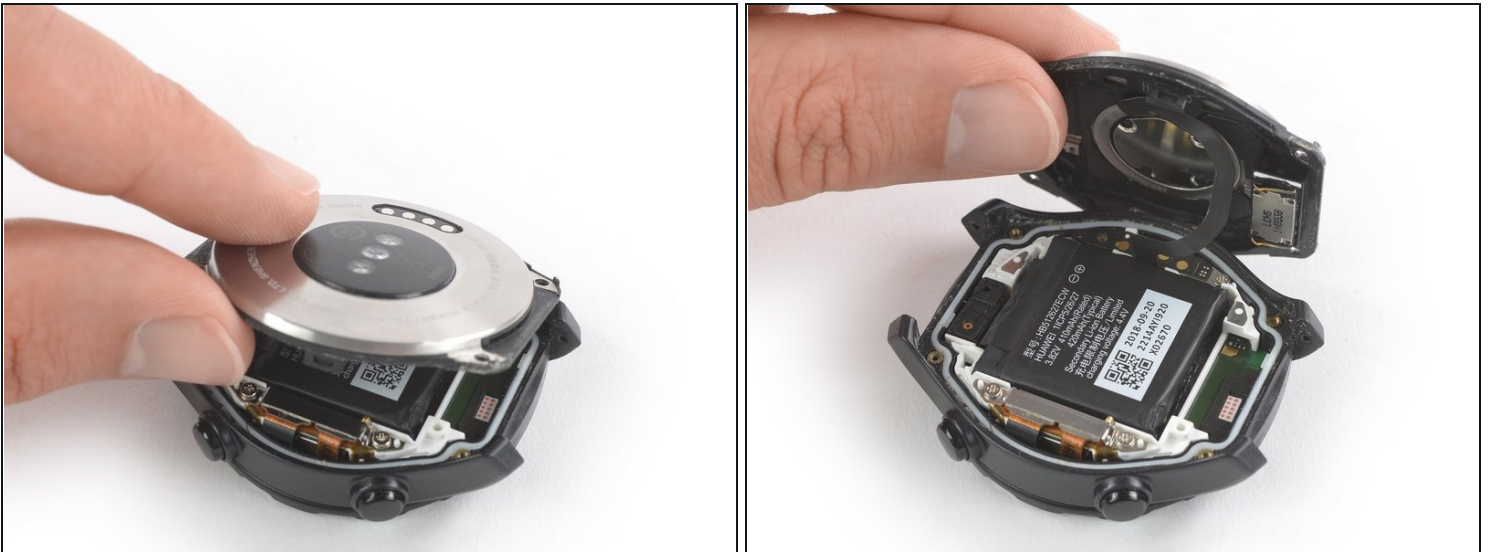
## Step 4



- Insert an opening tool into the gap between the back cover and the watch case at the bottom edge of the back cover.
- Use the opening tool to pry up the back cover of the Huawei Watch 2.

⚠ Do not remove the back cover assembly all the way yet—it's still connected to the mainboard.

## Step 5



- Carefully fold the back cover assembly to the opposite side of the two watch crowns.



## Step 6 — Huawei Watch 2 Battery Disconnect



- Remove the Phillips #00 screw (1.8 mm length).

## Step 7



① The heart rate sensor flex cable is attached to the metal shield which covers the battery connector. In order to avoid damage to the flex cable, only grab the metal shield on the bottom end where the Phillips screw was located.

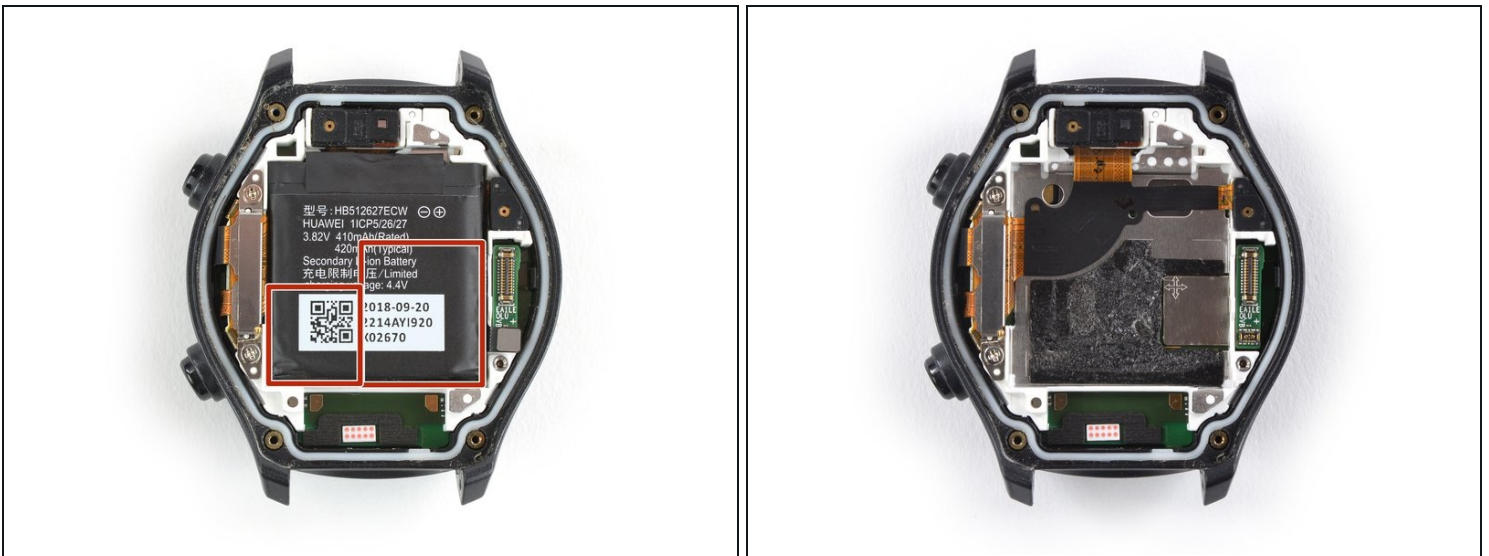
- Use a pair of [tweezers](#) to carefully remove the metal shield.
- Remove the back cover assembly.

## Step 8



- Use the flat end of a spudger to pry up and disconnect the battery flex cable.

## Step 9 — Battery



- ⓘ In the following step you're going to pry out the battery.
- In order to avoid damage to the flex cables running underneath the battery, only pry in the red marked areas.

## Step 10



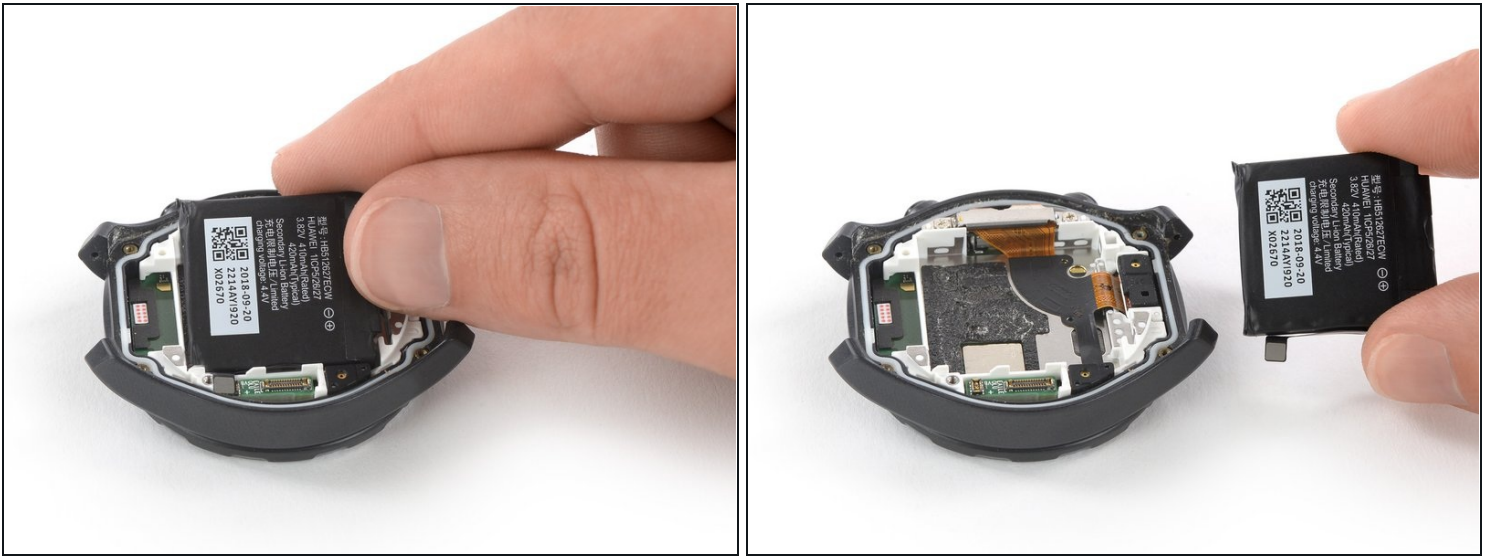
- Apply a [heated iOpener](#) to the screen to loosen the adhesive which is holding the battery in place. Apply the iOpener for at least two minutes.

## Step 11



- Insert the flat end of a spudger between the bottom edge of the battery and the back cover.
- Use the spudger to carefully pry the battery out of its recess.

## Step 12



- Remove the battery.

**⚠ Do not reinstall a damaged or deformed battery, as doing so is a potential safety hazard.**

To reassemble your Huawei Watch 2 follow these instructions in reverse.

If possible, turn on your Huawei Watch 2 and test your repair before installing new adhesive underneath the battery and resealing.

For optimal performance, calibrate your newly installed battery: Charge it to 100% and keep charging it for at least 2 more hours. Then use your device until it shuts off due to low battery. Finally, charge it uninterrupted to 100%.

Take your e-waste to an [R2 or e-Stewards certified recycler](#).

Repair didn't go as planned? Check out our [Answers community](#) for troubleshooting help.