



How to Fix a Small Ceramic Statue

Fixing a ceramic item by using super glue.

Written By: Trenton Gilbert



INTRODUCTION

We as humans tend to be clumsy, which can lead to many things breaking. For example, a ceramic piece that can have sentimental value. Here is my guide to fixing the ceramic piece using simple tools.

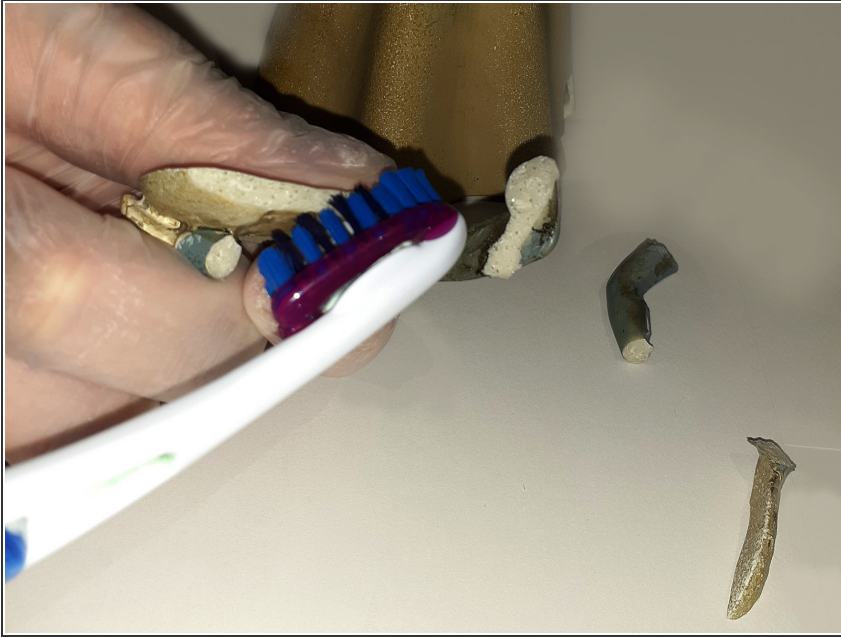
TOOLS:

- [Towel](#) (1)

Recommended but not required.

- [Super Glue](#) (1)
 - [Toothbrush](#) (1)
 - [Paintbrush](#) (1)
 - [Paint](#) (1)
-

Step 1 — How to Fix a Small Ceramic Statue



- Gather all the pieces and dust them off using the toothbrush. This way there is no stray shards left on the pieces.

Step 2



- Lay all the pieces on a towel or clean surface, aligned with where they belong. This way it is easy to find what you need in a timely manner.
- ❗ This step is not required but recommended to keep all of the broken pieces organized.

Step 3



- Using the largest piece as the base for the repair, start gluing the pieces back where they belong. Make sure to not overuse the glue, as it can cause issues later.
- ❗ Follow the instructions for the super glue you are using, dampening areas with water if needed.

Step 4



- As you glue each piece make sure to hold it in place until it solidifies enough to hold everything in place, then glue on the next piece.
- ⓘ This step can vary in time. The glue I used required being held in place for a few minutes.

Step 5



- After you glue it back together, allow it to dry. This way the glue has time to set in place and harden.
- ⚠ Make sure your ceramic piece is somewhere stable and dry. If it is not stable it could fall and break again. If the room is not dry the glue could have issues drying properly.

Step 6



- Finally, lightly sand and paint the areas you glued.