



Hamilton-T1 Oxygen Cells Replacement

Replacement guide for the Hamilton-T1 oxygen cells. Oxygen cells are crucial to keeping and maintaining a working ventilator and must be replaced as needed.

Written By: Tyler



INTRODUCTION

This guide is created for the replacement of oxygen cells in the Hamilton-T1 Ventilator. Replacing the oxygen cells is a crucial step in maintaining and keeping a working ventilator.

NOTE:

- Replace the oxygen cell with genuine Hamilton Medical parts only; otherwise, oxygen measurement will not function. To prevent a permanent alarm make sure to use special Hamilton Medical oxygen cells only.
- To prevent leakage within the ventilator, make sure an oxygen cell is installed at all times, even if you use an external monitor or disable oxygen monitoring.



TOOLS:

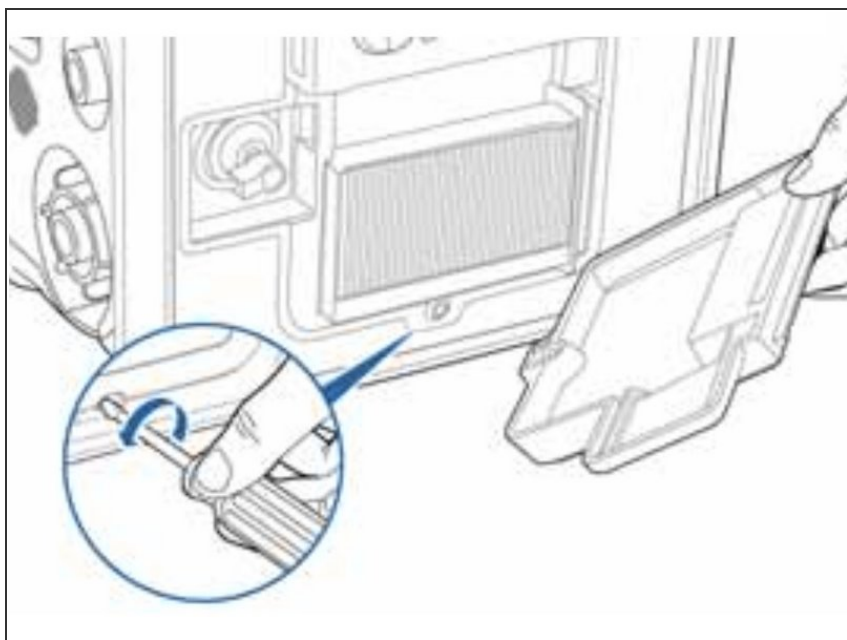
- [Phillips #0 Screwdriver](#) (1)
-

Step 1 — Oxygen Cells



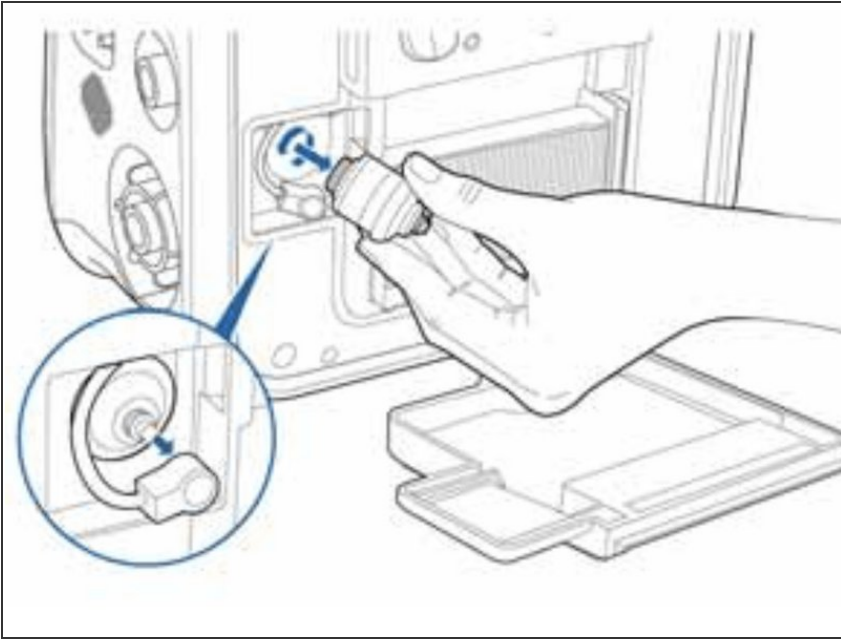
- Flip device around until the back panel is exposed.

Step 2



- Remove the screw in the bottom center of the panel, and then take the panel off.

Step 3



- Disconnect the oxygen cell by removing the tube.
- Then twist the cell counter-clockwise and pull to remove the oxygen cell.
- Install the new oxygen cell and put the back cover on.

Step 4



- After the cell is installed. Run the oxygen cell calibration.
- Oxygen calibration guide can be found in 3-11 of the Hamilton-T1 operations manual.

After the installation and calibration of the oxygen cell. The Hamilton-T1 Ventilator is ready to operate.