



Siemens-Maquet Servo-i Battery Module Replacement

This guide will show you how to replace the battery in the Siemens-Maquet Servo-i ventilator.

Written By: Monroe Erle

INTRODUCTION

First this guide will outline how to check that everything in the battery module is correct. This will include the long list of warnings that you need to be aware of when replacing the battery. Second, the details of replacing the battery module will be outlined.

Before starting know that the Battery module is rated 12 V,3.5 Ah. The battery backup time is approx. 0.5 hour/battery and up to six backup Battery modules can be connected to the module. If looking for more detailed instructions while reading through this guide refer to pages 19-22 of the Siemens User Guide. Also page 4-18 and 5-2 on the service manual.

Service Manual- 4-18


TOOLS:

- [Phillips #0 Screwdriver](#) (1)
 - [17 mm Wrench](#) (1)
-

Step 1 — Battery Module




 Check the battery date. The battery needs replacing after 3 years.


 The manufacturing date is listed in the format (year-week) on the battery label.

 Servo-i User Manual page 19.

Step 2



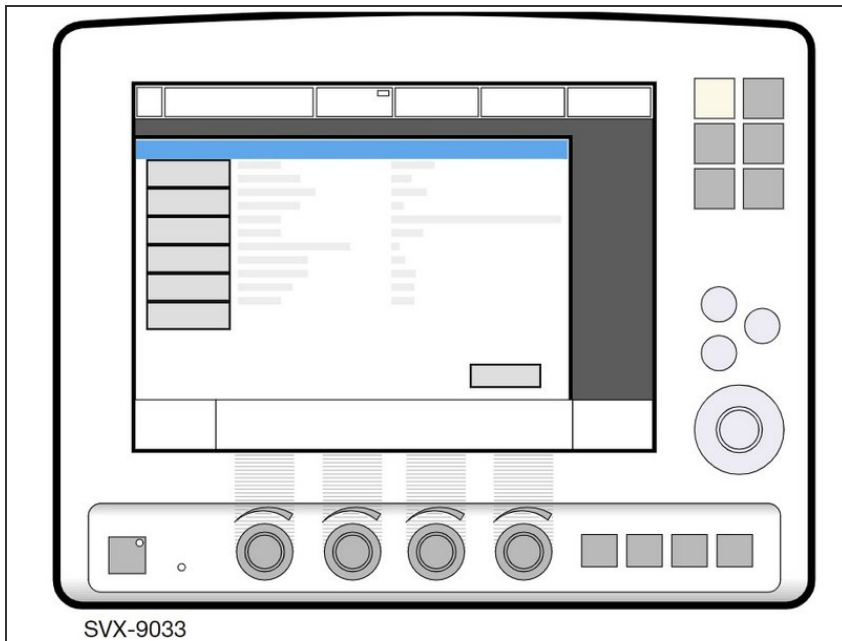
 If battery status on touchpad display is red make sure to replace battery modules.

 At least one battery module must be installed at all times. If not the ventilator will not work properly.

 Store uninstalled batteries at 15-20 degrees celsius.

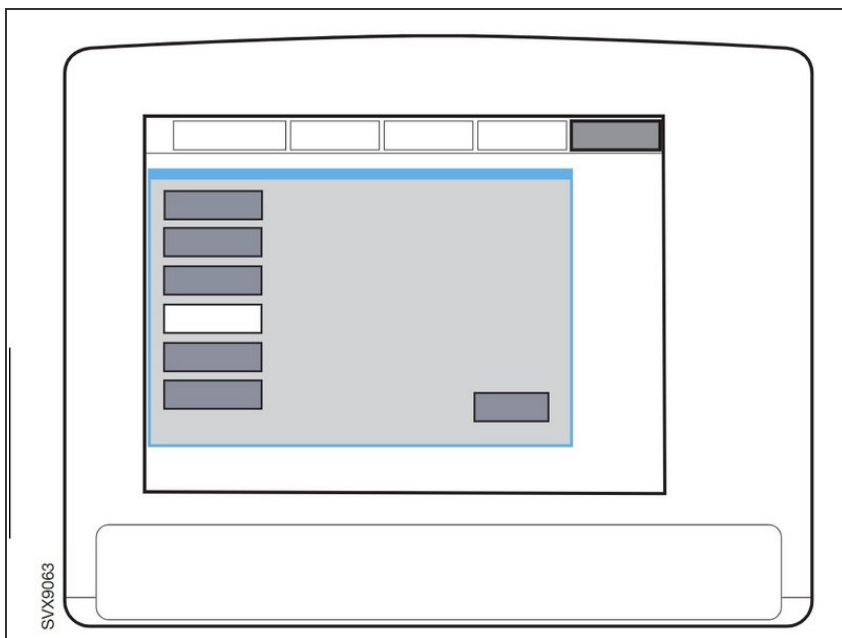
 Servo-i User Manual page 19.

Step 3



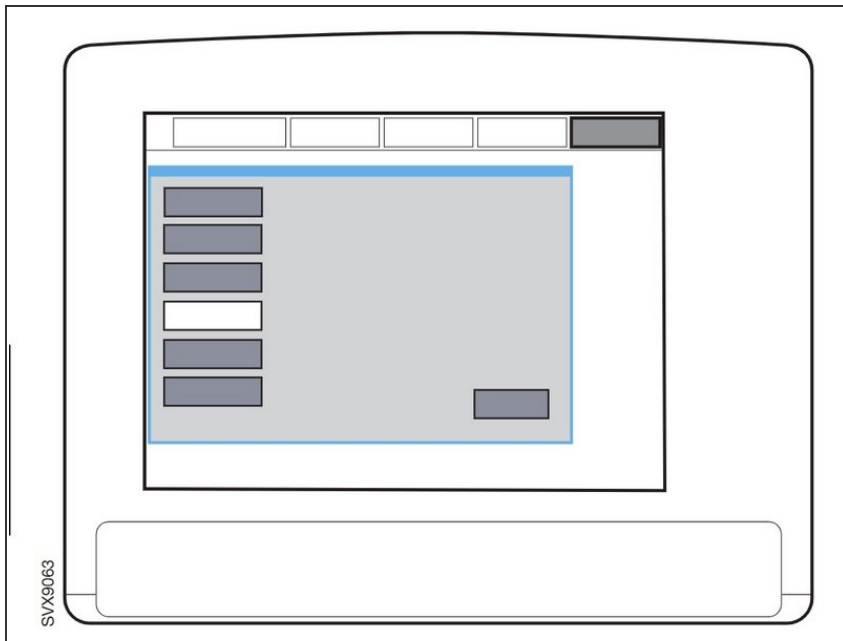
- Wait for the battery to be fully charged.
- To check this, press the battery power symbol button on the battery.
- ⓘ All four LED's must be lit.
- ⓘ Servo-i User Manual page 20.


Step 4





- With gas, patient tubes and test lung connected, let the Servo-i run in a ventilation mode.
- Disconnect mains power to the unit to allow battery operation.
- ⚠ Allow ventilator to run and make sure 'No battery capacity'- alarm is not activated.
- ⓘ Servo-i Service Manual 5-2.

Step 5

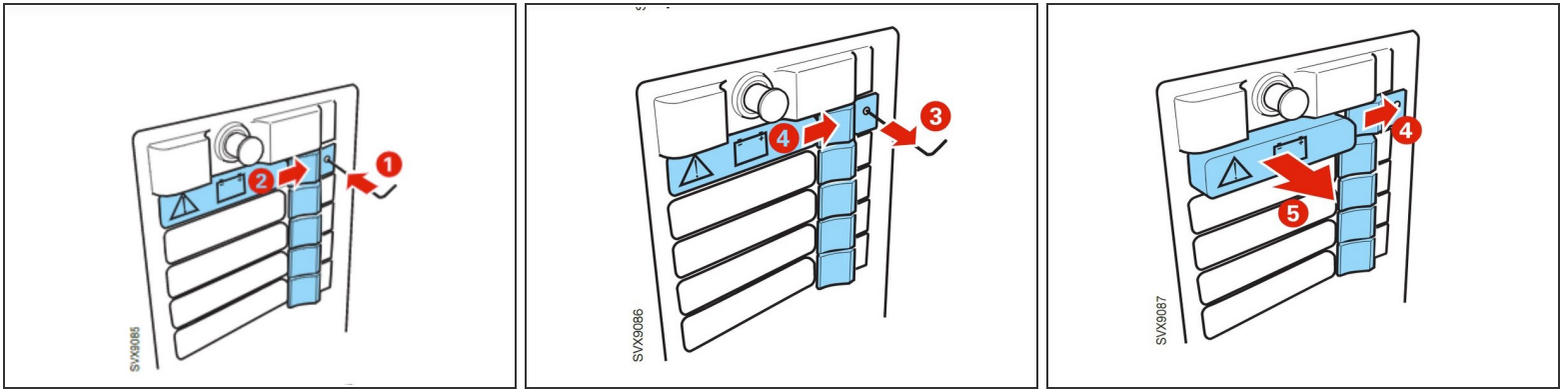


 The time between the 'Limited battery capacity'- alarm and the 'No battery capacity' alarm must not exceed 7 minutes.

 The event log contains the records of alarm times.

 Servo-i Service Manual 5-2.

Step 6



i See if the upper part of the module is equipped with a latch. This means it is fixed and follow these instructions to disassemble a battery from the battery module.

- 1. Locate a small hexagonal wrench or screwdriver.
- Place the tool in the small hole on the right hand side.
- 2. Simultaneously push the release button.
- 3. Remove the tool, while still pressing the release button.
- 4. Continue to keep the button pressed until the battery pops out.
- 5. Pull out the battery module.

i Servo-i Service Manual 4-18.

To reassemble your device, follow these instructions in reverse order.