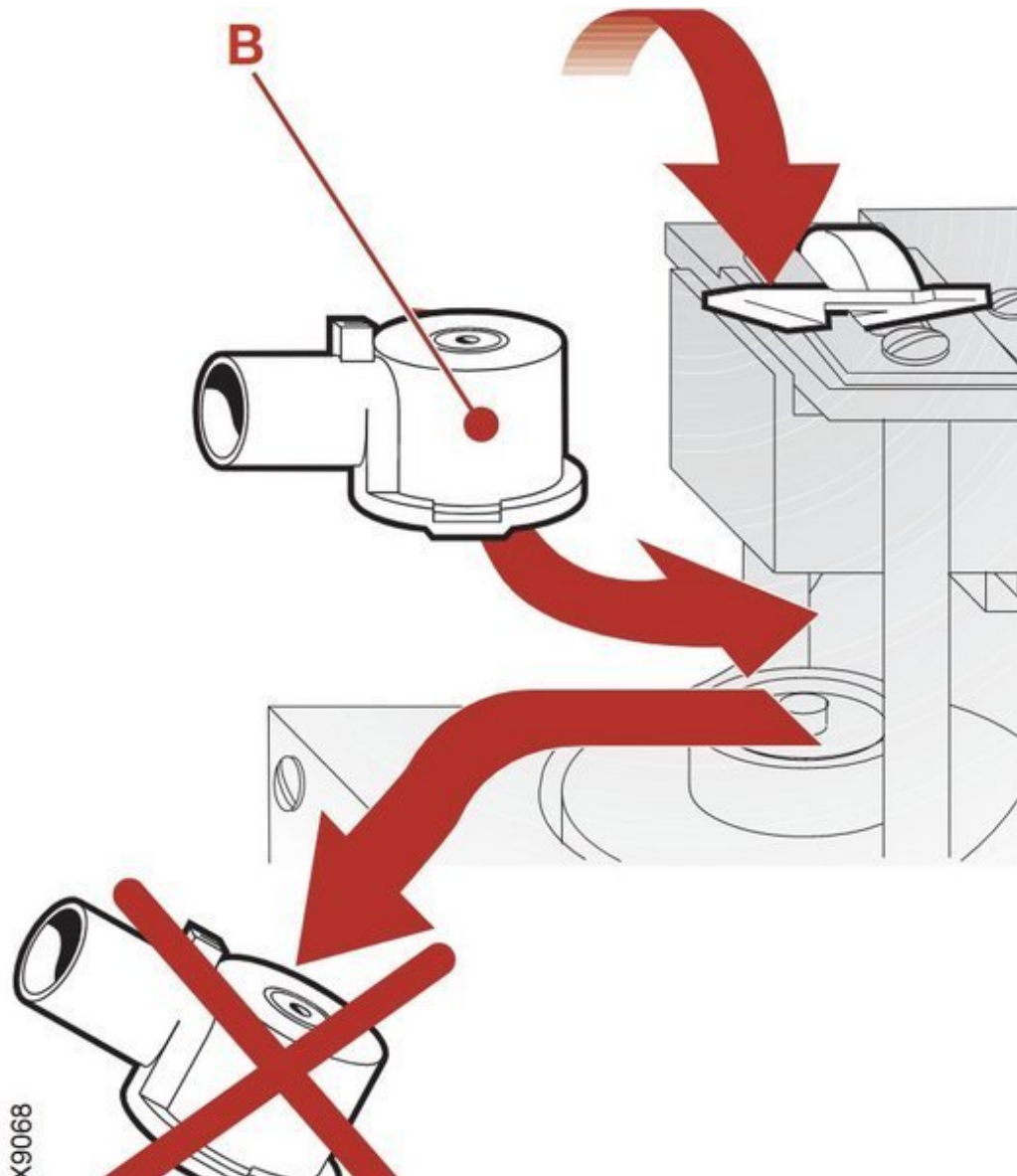




Siemens-Maquet Servo-i Inspiratory Pressure Transducer Filter Replacement

Use this guide to replace the pressure transducer filter in the Siemens-Maquet Servo-i ventilator.

Written By: Maria Brown



INTRODUCTION

The nozzles are part of the Maintenance Kit 5000 hours that should be done before hooking up to a patient. The prerequisite guide is the filter replacement for the gas module.

Preventive maintenance

Maintenance kit, 5,000 hours

Only original parts from the manufacturer must be used. Spare parts and maintenance kits can be ordered from your local Maquet representative. When performing this maintenance, a 'Maintenance kit, 5,000 hours' should be used. The following parts shall be replaced and they are included in the 'Maintenance kit, 5,000 hours':

- A. Filters for the gas modules
- B. Nozzle units for the gas modules
- C. Bacteria filter for the inspiratory pressure transducer
- D. Bacteria filter for the O2 cell

Performing the Preventive maintenance:

- Disassembling and assembling of the unit is required when replacing parts included in the 'Maintenance kit, 5,000 hours'. If not stated otherwise, refer to chapter 'Disassembling and assembling' for instructions.
- The letters A – D in the text below refers to the description of the Maintenance kit above.
- Prepare the unit as described in section 'Preparations' above in this chapter

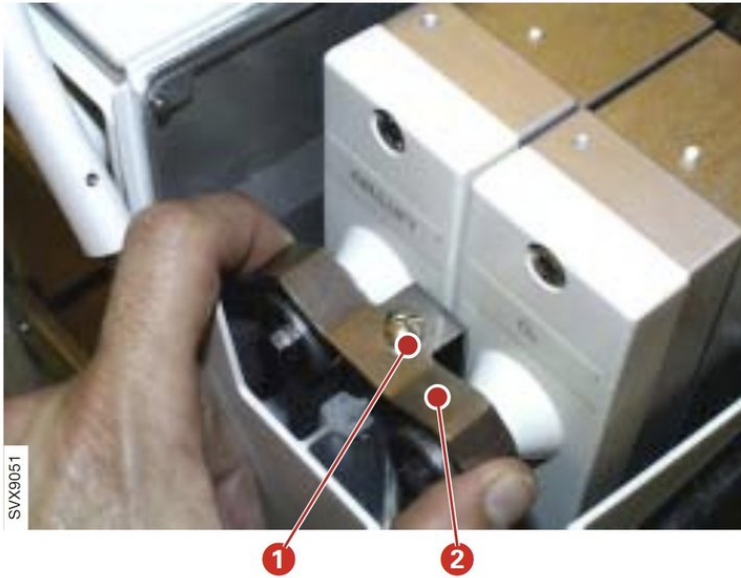
Service Manual 7-3



TOOLS:

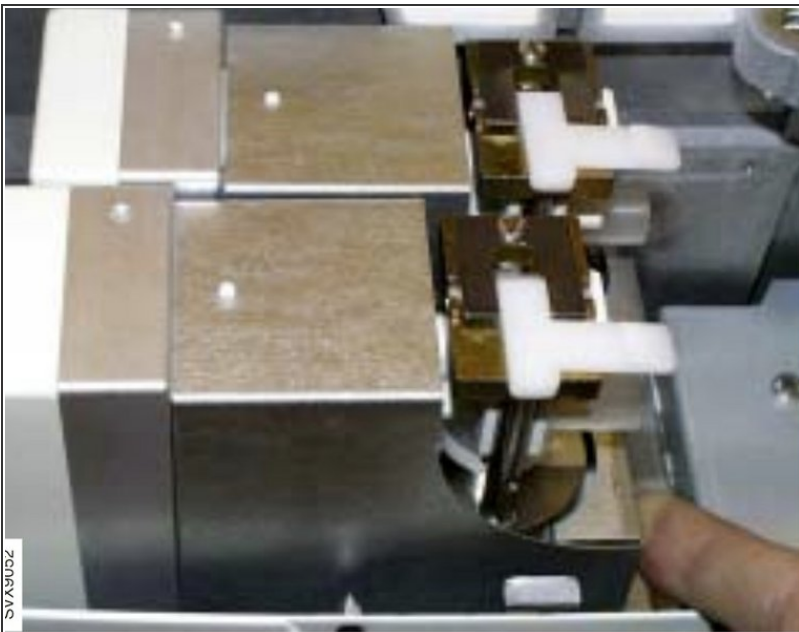
- [Phillips #0 Screwdriver](#) (1)

Step 1 — Filter for Gas Modules



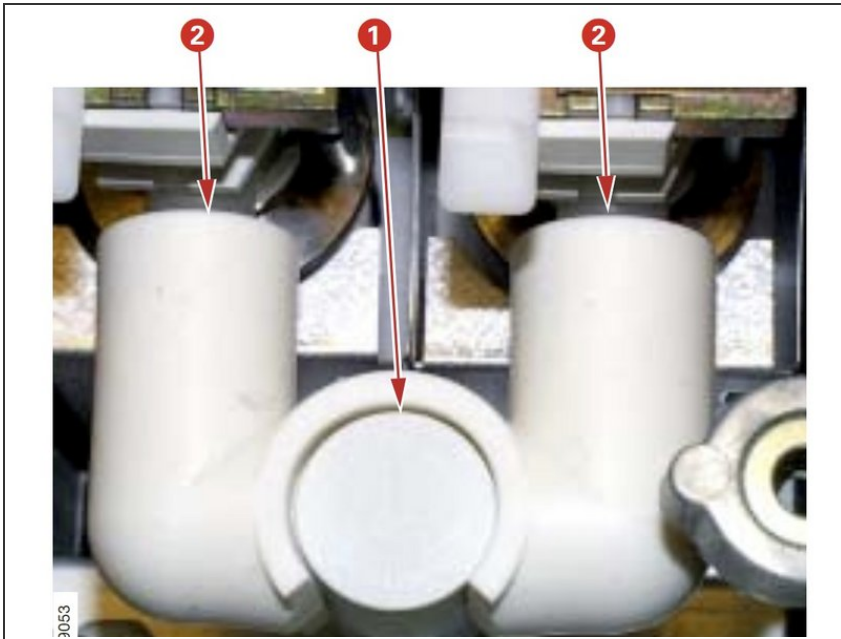
- When performing this maintenance, a 'Maintenance kit, 5,000 hours' should be used
 - Remove the inspiratory section cover
 - Loosen the screw (1)
 - Lift off the gas module bracket (2)
- ⓘ Service Manual 4 - 14

Step 2



- Pull out and lift off both gas modules.
- ⓘ Service Manual 4 - 14

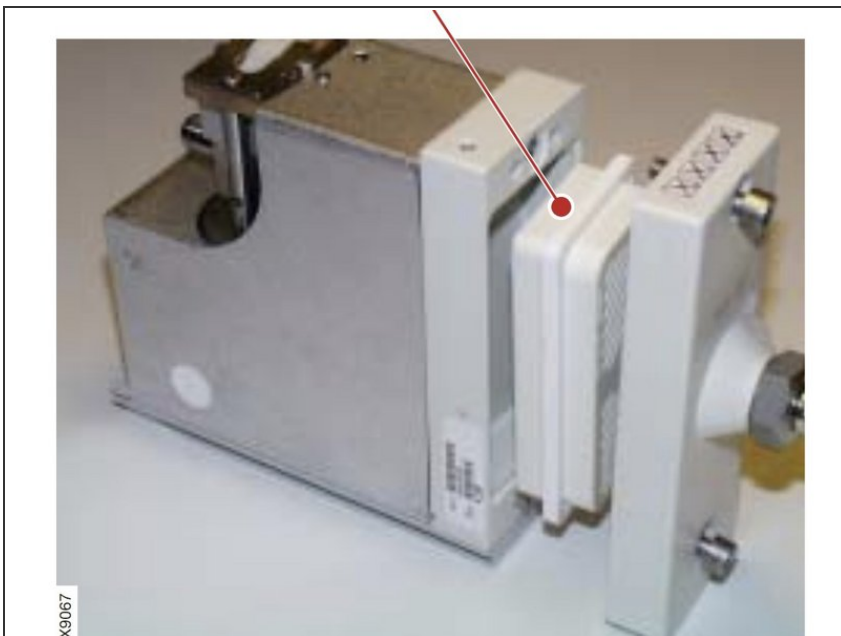
Step 3



- Note 1:** When assembling, make sure that the connector muff properly seals around the inspiratory pipe (1). The connector muff must not be pushed too far onto the nozzle units (2)
- Note 2:** The gas modules used in Servo-i are factory adjusted for this purpose. When replacing gas modules, make sure to use only Servo-i gas modules. Similar gas modules intended for the SV 300/300A or KION / KION-i Systems must not be used.

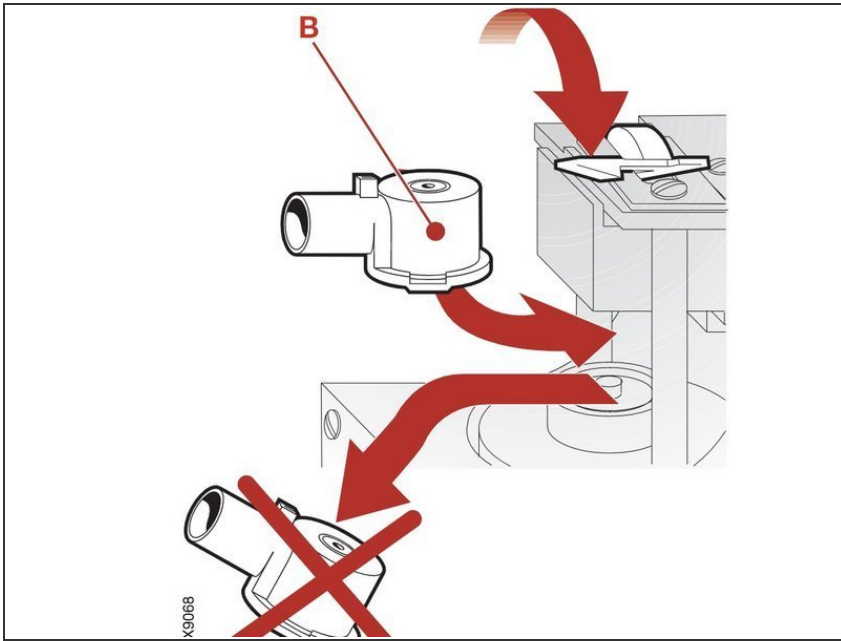
Service Manual 4 - 14

Step 4



- Replace filters in the gas modules. When replacing filter, move the rubber seal from the old to the new filter.
- Service Manual 7 - 3**

Step 5 — Pressure Transducer Filter



- Replace filters in the gas modules. When replacing filter, move the rubber seal from the old to the new filter.
- Replace plastic nozzle units in the gas modules.
 - ⓘ After replacement of plastic nozzle units, wait 10 minutes before connecting pressure to the gas modules
 - ⓘ Service Manual 7 - 4

To reassemble your device, follow these instructions in reverse order.