



Samsung Galaxy A10 Screen Replacement

How to replace a cracked or broken screen on your Galaxy A10.

Written By: Adriana Zwink



INTRODUCTION

Use this guide to replace a cracked or broken screen on your Samsung Galaxy A10.

Note: This guide instructs you to replace only the screen while leaving the original frame and motherboard in place. However, some replacement screens for this phone come pre-installed in a new frame (a.k.a. chassis), which requires a very different procedure. Make sure you have the correct part before starting this guide.

Before disassembling your phone, discharge the battery below 25% . The battery can catch fire and/or explode if accidentally punctured, but the chances of that happening are much lower if discharged.

You'll need **replacement adhesive** to reattach components when reassembling the device.



TOOLS:

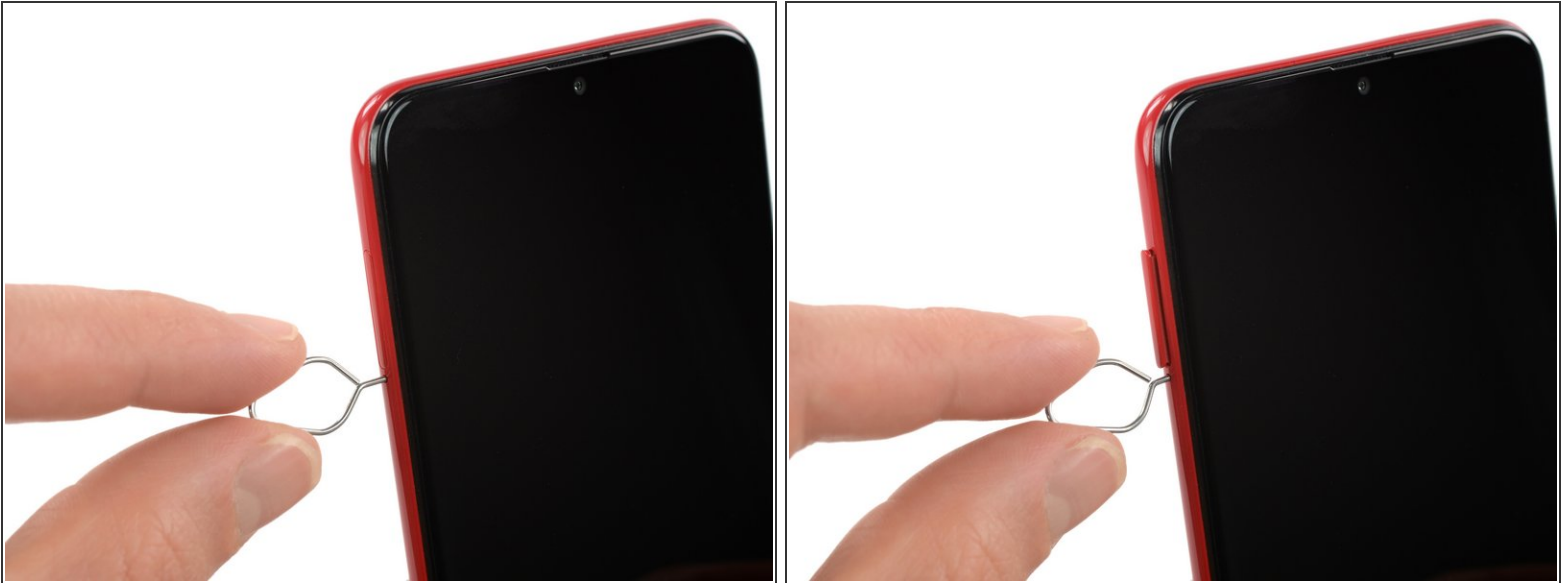
- [Phillips #00 Screwdriver](#) (1)
- [SIM Card Eject Tool](#) (1)
- [iFixit Opening Picks \(Set of 6\)](#) (1)
- [Spudger](#) (1)
- [iOpener](#) (1)
- [Suction Handle](#) (1)



PARTS:

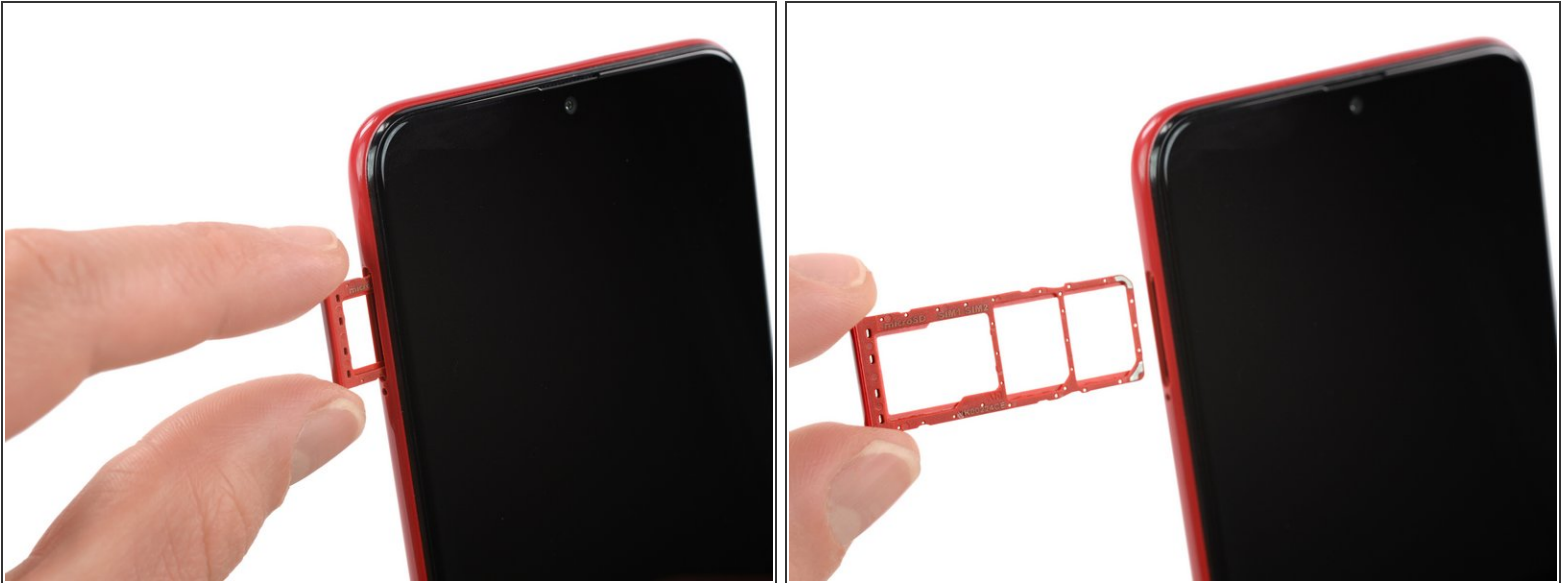
- [Samsung Galaxy A10 Screen](#) (1)
- [Precut Adhesive Card](#) (1)

Step 1 — Samsung Galaxy A10 SIM Tray Replacement




- Insert a SIM card eject tool, a SIM eject bit or a straightened paper clip into the hole on the SIM tray located at the left side of the phone.
- Press firmly to eject the tray.

Step 2



- Remove the SIM card tray.

 When reinserting the cards, make sure to properly orient them in the tray.

Step 3 — Back Cover



 The back cover is held in place by plastic clips.

- Insert an opening pick between the screen and the back cover on the bottom of the phone where the charging port is located.

Step 4



- Slide the opening pick to the bottom left corner to release the clips.

Step 5



- Slide the opening pick along the left edge to the top left corner of the phone, to release the clips.

Step 6



- Slide the opening pick from the top left corner to the top right corner to release the plastic clips.

Step 7



- Slide the opening pick from the top left corner to the bottom right corner to release the remaining clips.

Step 8



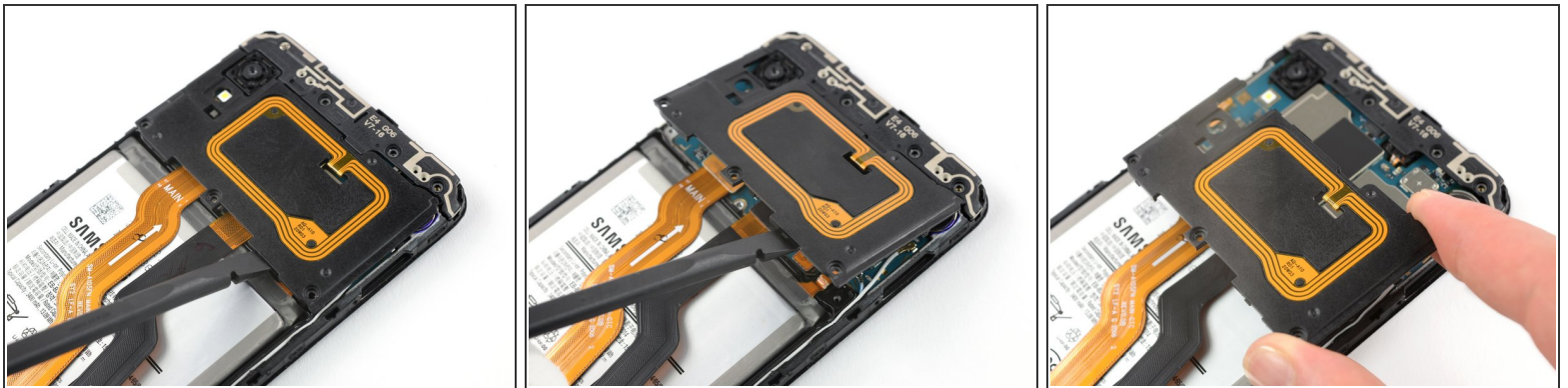
- Remove the back cover.

Step 9 — Samsung Galaxy A10 Motherboard Cover Replacement



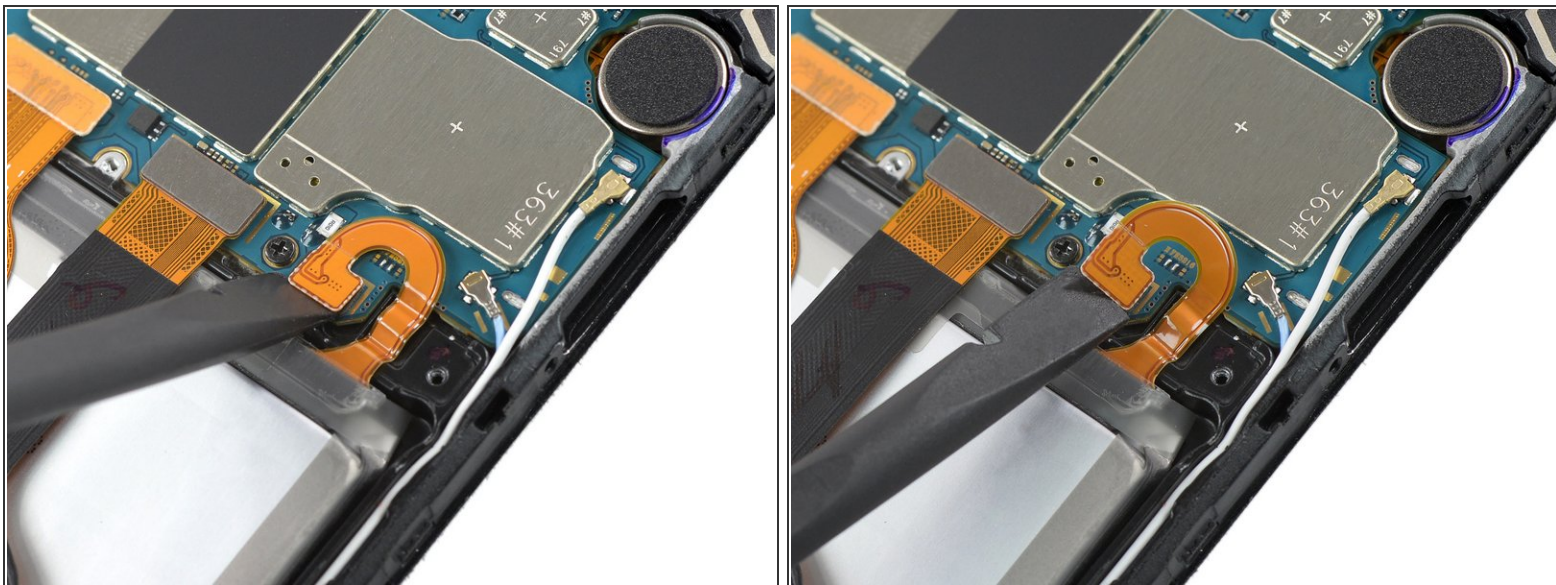
- Remove the three Phillips #00 screws (3 mm length).

Step 10



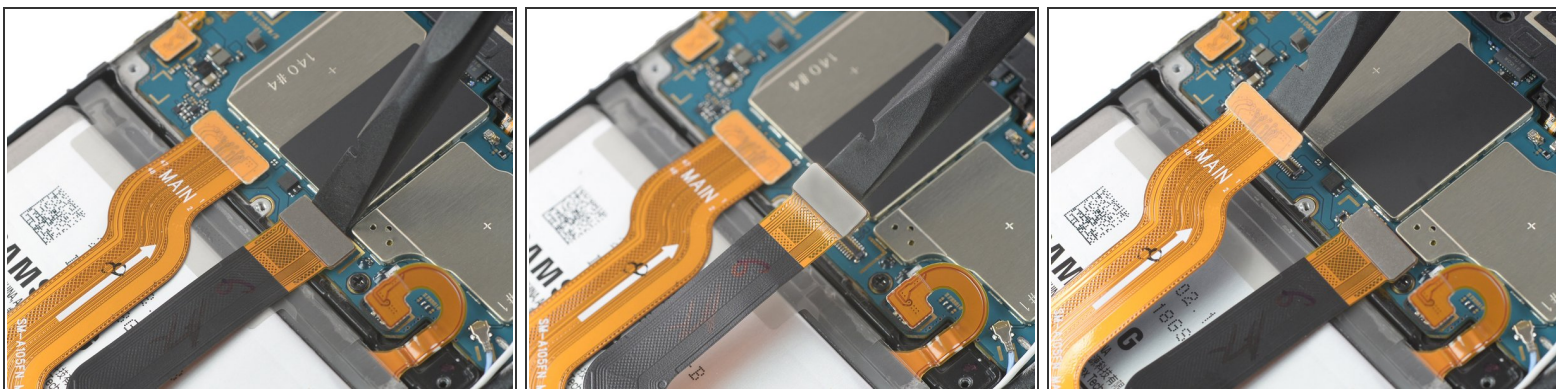
- Use the flat end of a spudger to pry up the motherboard cover to release the plastic clips which hold the cover in its place.
- i* The clips can be a bit resistive. If you're having trouble prying up the motherboard cover, twist the spudger to make the process easier.
- Remove the motherboard cover.
- i* The remaining plastic clips should release during this process or can be unhinged easily by hand.

Step 11 — Battery Disconnect



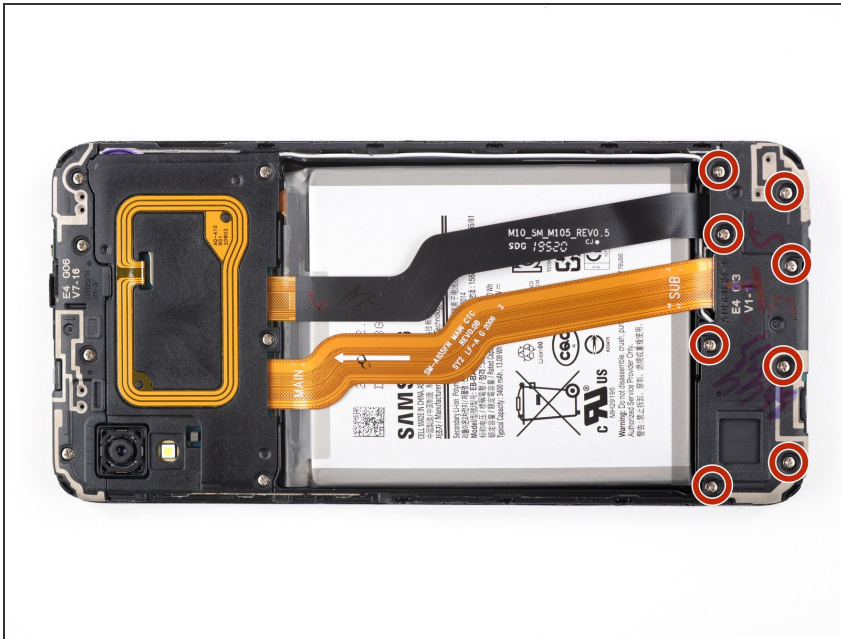
- Use a spudger to disconnect the battery by prying the connector straight up from its socket.

Step 12 — Screen



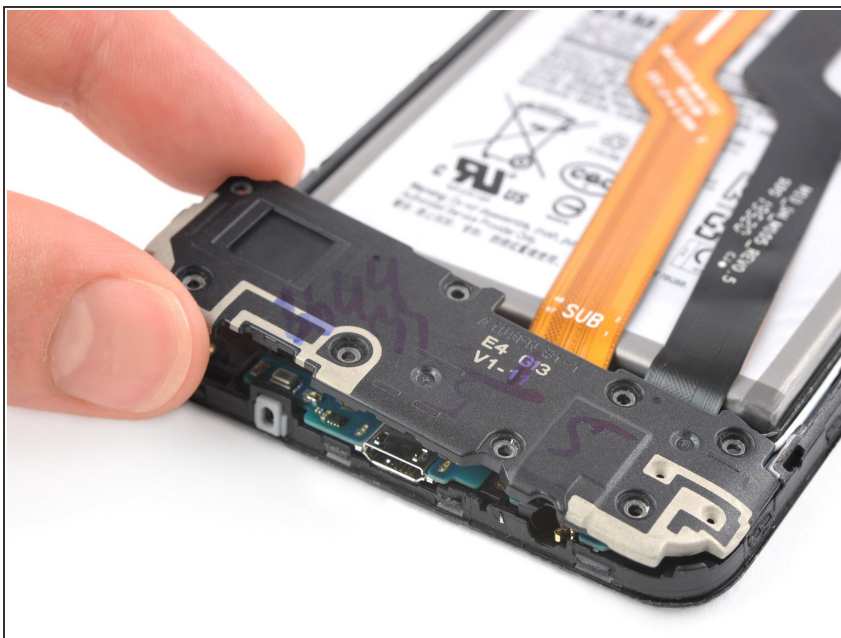
- Use the flat end of a spudger to pry up and disconnect the display flex cable from the motherboard.

Step 13



- Remove the 8 Phillips #00 screws on the bottom (3 mm length).

Step 14



- Remove the daughterboard cover from the bottom.

Step 15



- [Heat an iOpener](#) and apply it on the display for at least two minutes to soften the adhesive underneath.

Step 16



- Place a suction cup on the screen near the bottom edge of the phone.
- ⓘ If the phone's screen is cracked, the suction handle may not stick. Try [lifting it with strong tape](#), or superglue the suction handle in place and allow it to cure so you can proceed.
- Pull the suction cup upwards and insert an opening pick in the gap between the display glass and the frame.
- Slide the opening pick to the bottom left corner to cut through the bottom adhesive.
- Leave the opening pick in in the corner to prevent the adhesive from resealing.

Step 17



- Insert a second opening pick and slide it to the top left corner. Leave the opening picks in place to prevent the adhesive from resealing.

Step 18



- Insert a third opening pick under the top left corner of the display.
- Slide the opening pick along the top edge of the phone to cut the adhesive.

⚠ When nearing the front facing camera, only work with the tip of the opening pick to avoid damaging or smearing the camera.

- Leave the opening pick in place to prevent the adhesive from resealing.

Step 19



- Insert a fourth opening pick at the top right corner of the phone.
- Slide the opening pick along the right edge and around the bottom corner to cut the remaining adhesive.
- Leave the fourth opening pick in the bottom right corner to prevent the adhesive from resealing.

⚠ Do not remove the display all the way yet—the display cable is still threaded through the frame and possibly adhered on the inner side of the frame.

Step 20



- Lift the screen from the top edge of the phone.
 - Thread the display flex cable through the gap in the frame and remove the display.
- ☒ If your replacement part doesn't come with preattached adhesive, the best way to secure the new screen is with a sheet of custom-cut double-sided tape. Apply the tape to the back of the screen, then carefully feed the display cable through the frame. Align the screen and press it into place.

If possible, turn on your device and test your repair before installing new adhesive and resealing.

To reassemble your device, follow these instructions in reverse order. Apply new adhesive where necessary after cleaning the relevant areas with isopropyl alcohol (>90%).

Take your e-waste to an [R2 or e-Stewards certified recycler](#).

Repair didn't go as planned? Try some [basic troubleshooting](#), or ask our [Answers community](#) for help.