



# Microsoft Wireless Mobile Mouse 1850

## Teardown

Have a look inside this mouse!

Written By: Jed Calvert



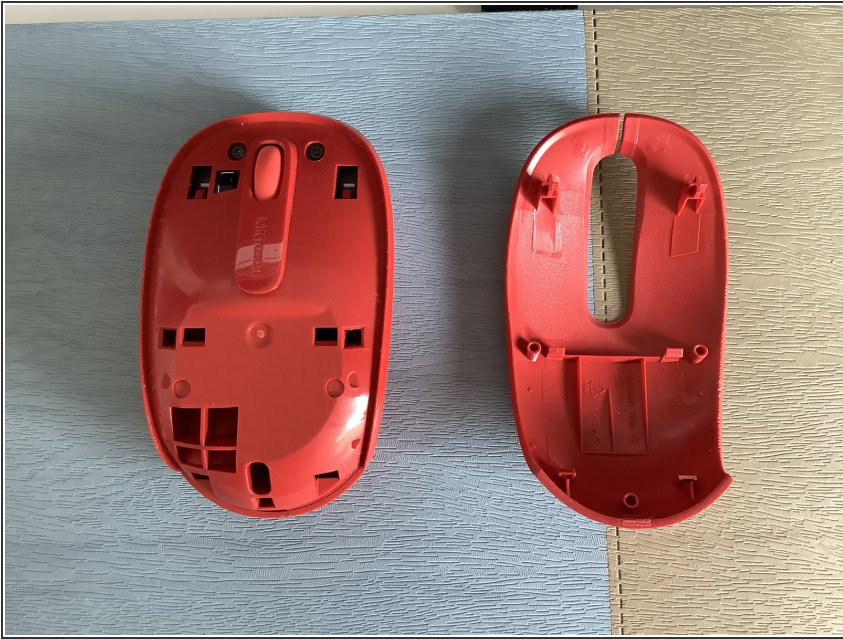


## TOOLS:

- [T6 Torx Screwdriver](#) (1)
  - [Phillips #00 Screwdriver](#) (1)
-

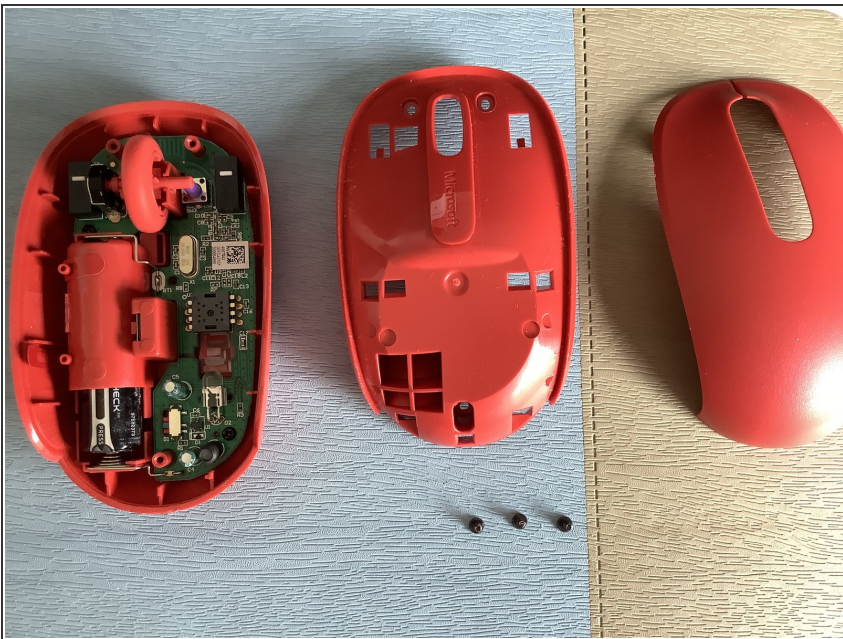


## Step 1 — Top case



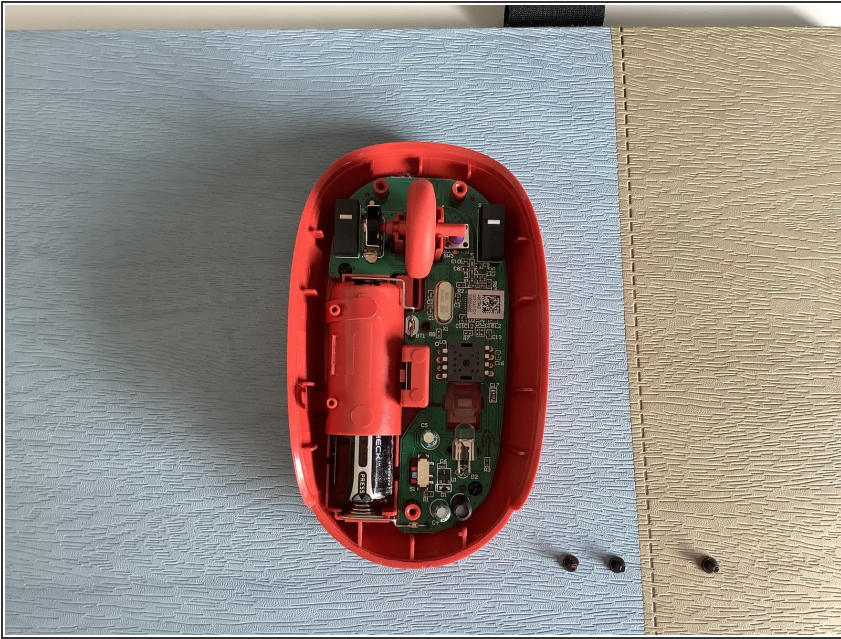
- I unclipped the 9 clips holding the top case to the body.

## Step 2



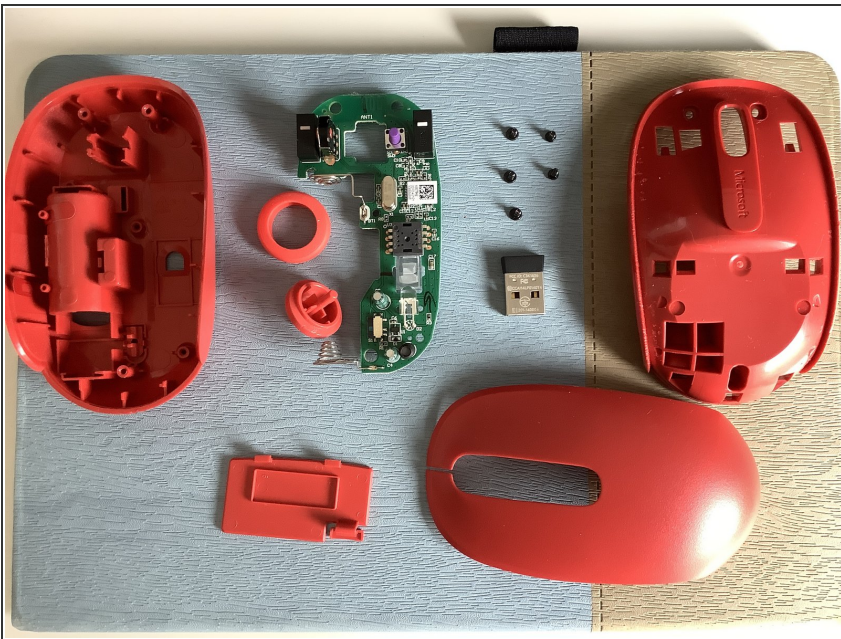
- I unscrewed the 3 **Torx T6** Screws holding the body onto the bottom case

## Step 3



- I undid the two **Philips #00** screws on the motherboard

## Step 4 — Fully Disassembled



- That's it!