



# Toshiba Satellite U405D-S2902 Faceplate Replacement

The faceplate helps prevent damage to the internal components of the laptop. Sometimes it can get scratched or damaged. This guide will give a step by step tutorial on how to remove and replace the faceplate from your laptop.

Written By: Brandon Kirklen



---

## INTRODUCTION

The faceplate is the area next to the keyboard that protects the inside parts of the device. Sometimes it may need to be taken off to repair other parts. This guide will show how to remove it.

---



### TOOLS:

- [Tweezers](#) (1)
  - [Phillips #00 Screwdriver](#) (1)
  - [Phillips #1 Screwdriver](#) (1)
  - [Phillips #2 Screwdriver](#) (1)
-

## Step 1 — Battery



- ❗ Make sure that the laptop is off and unplugged.
- Turn the laptop over.
- Slide back the left lock, and you should hear a click when it is successfully locked back in.

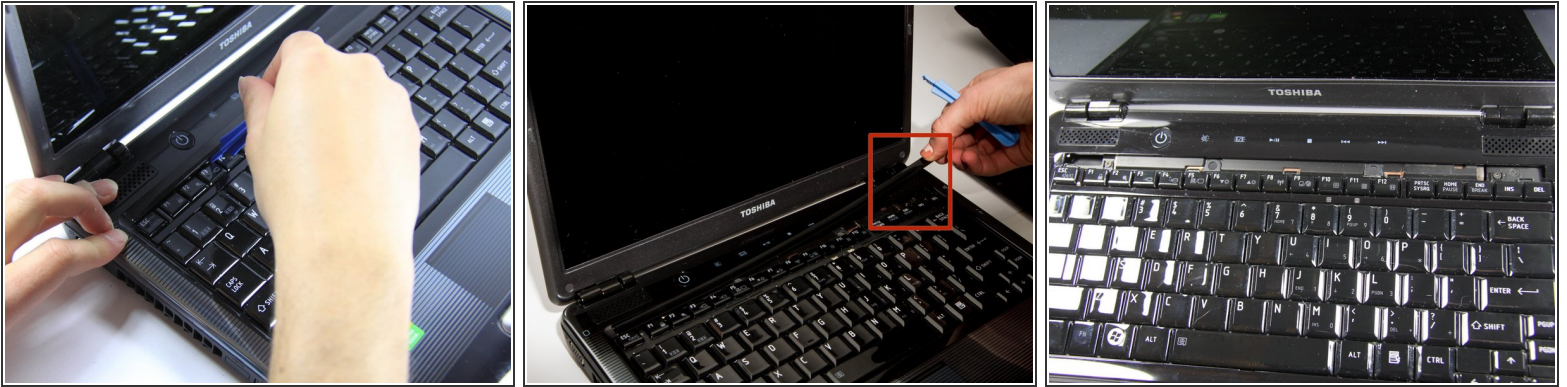
## Step 2



- Rotate the laptop 180 degrees so that the battery is near you.
- Hold back the spring slide and pull the battery out.

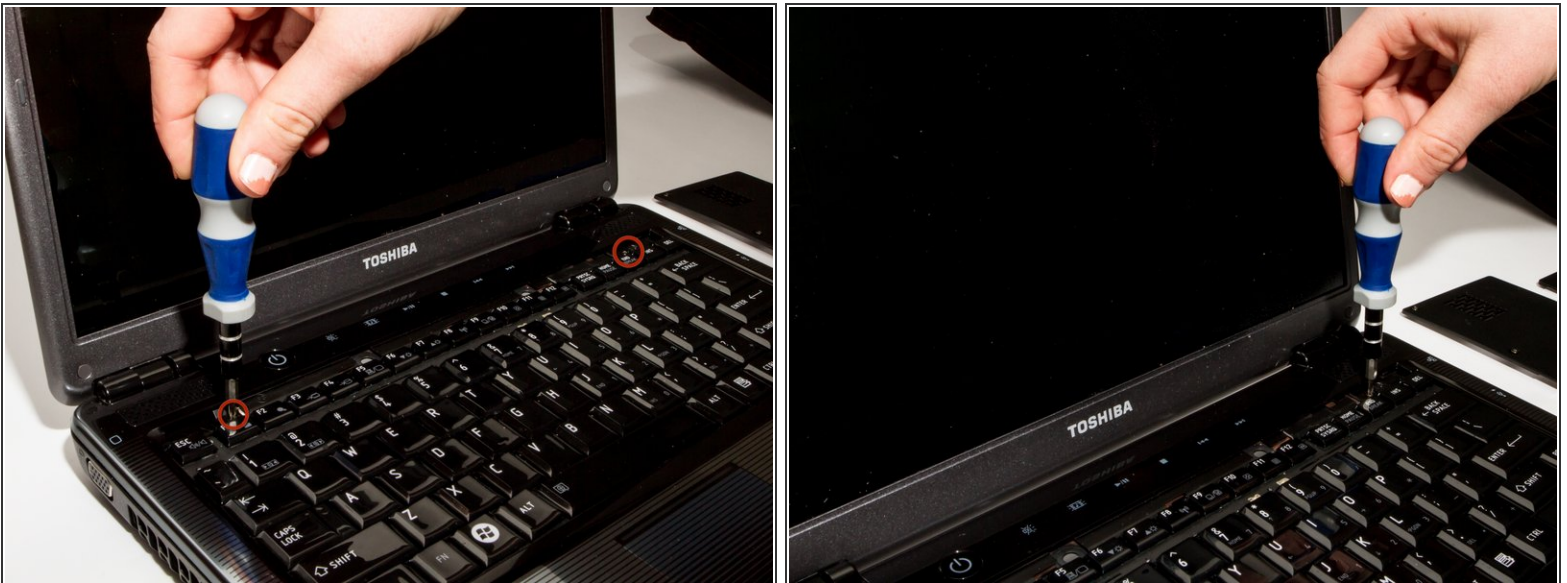


## Step 3 — Keyboard



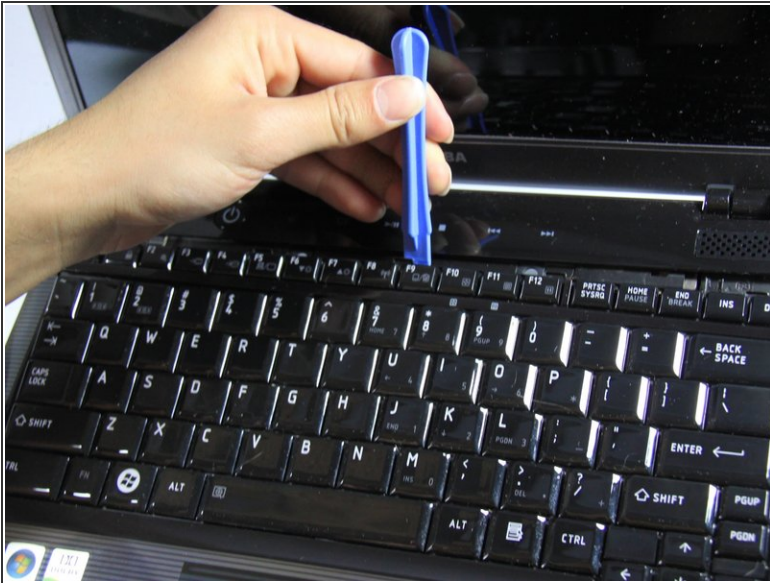
- Situate the laptop so that it is open and the display is facing you.
- Use the plastic opening tool to pry the black plastic insert upward. The insert can be found at the top of the keyboard.
- Once the insert is loose, carefully remove it from the device.

## Step 4



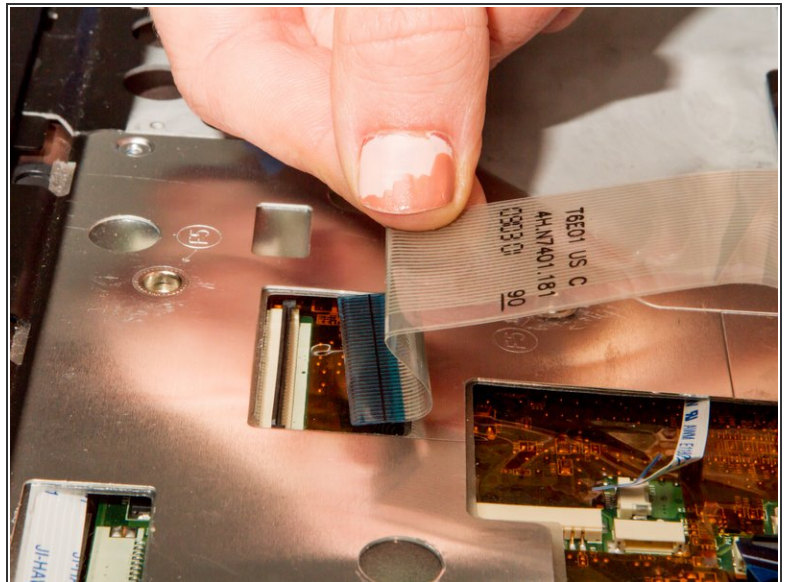
- Using #1 Phillips Screwdriver, remove both of the 5 mm screws that are located beneath the insert.

## Step 5



- Use the plastic opening tool to begin removing the keys off of the device.
- ❗ Once the keys are off, gently remove the keyboard. Be careful of the ribbon cable that still connects the keyboard to motherboard.

## Step 6



- Lift up the gate on the ZIF socket to release the ribbon.
- Ease the ribbon connecting the keyboard to the motherboard out of the ZIF socket.

This document was generated on 2020-11-28 02:50:48 AM (MST).

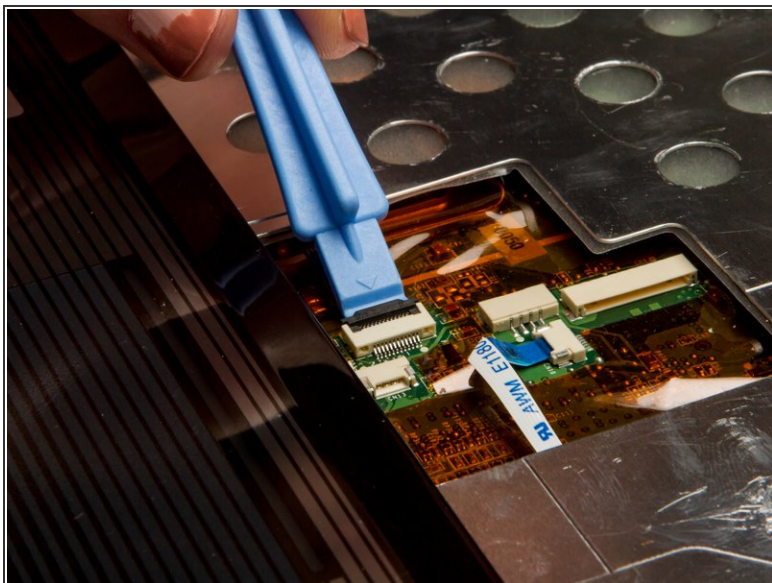


## Step 7 — Faceplate



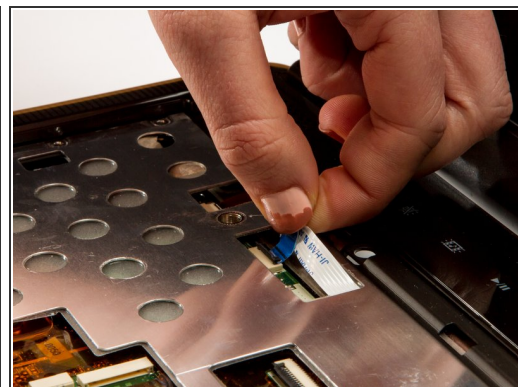
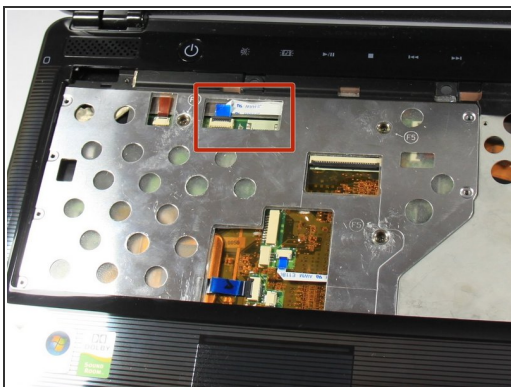
- With the keyboard removed, locate the marked screws.
- Remove the marked, 5mm screws using the #1 Phillips Screwdriver.

## Step 8



- In the opening above the mouse pad, use the plastic opening tool to push up the black gate of the ZIF socket.
- Remove the ribbon from the ZIF socket.

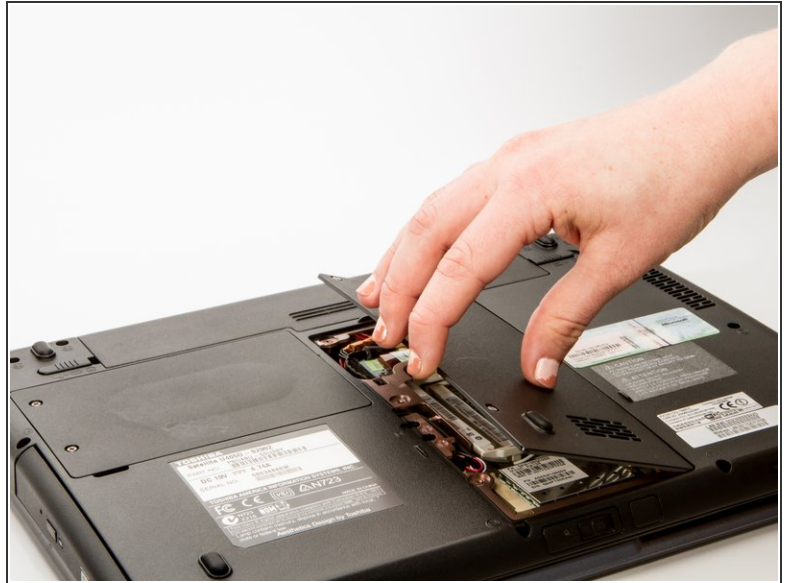
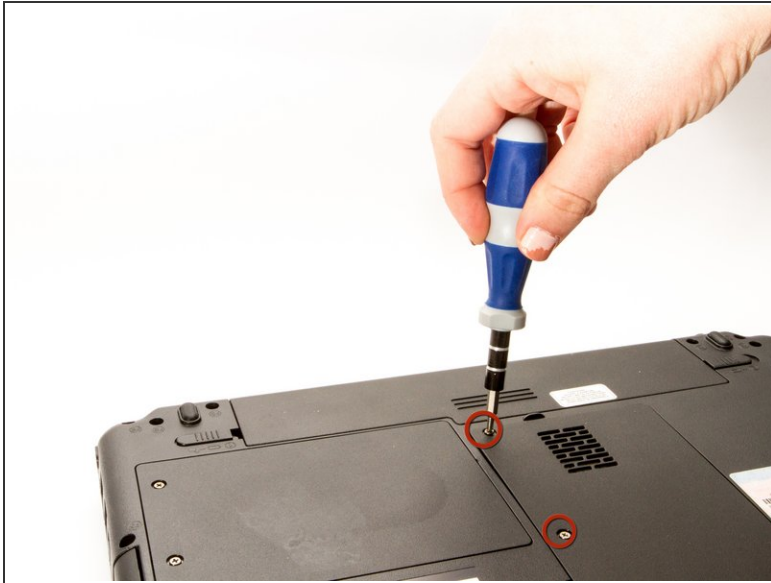
## Step 9



- Locate the wide opening at the top near the screen.
- Use the plastic opening tool to open the black ZIF socket.
- Remove the blue ribbon.



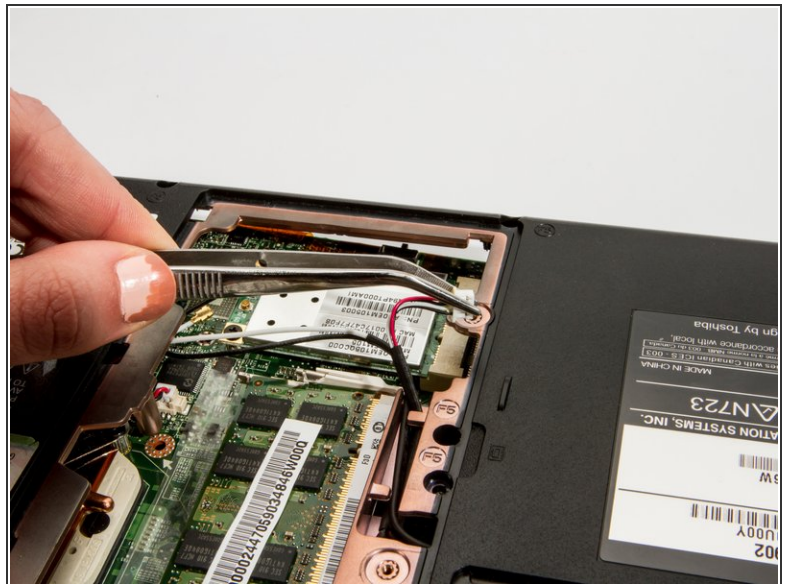
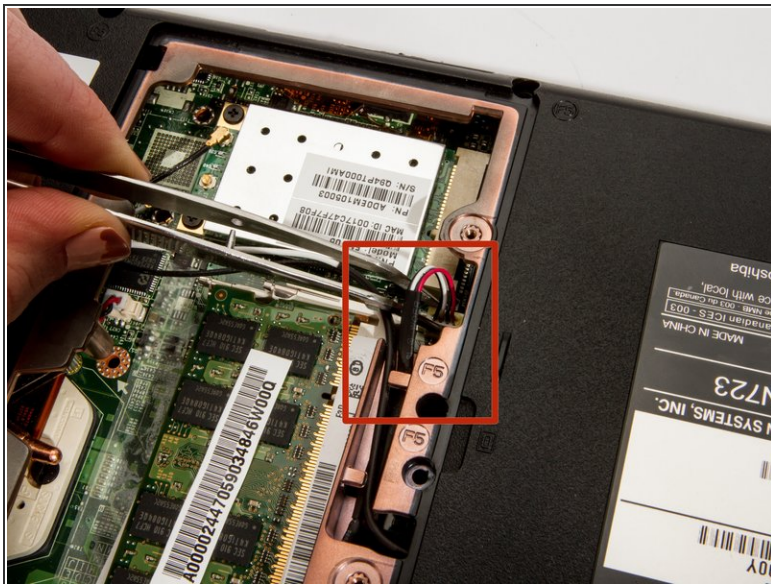
## Step 10



⚠ After removing the screw in step 3, carefully close the laptop and put it face down. Locate the center panel.

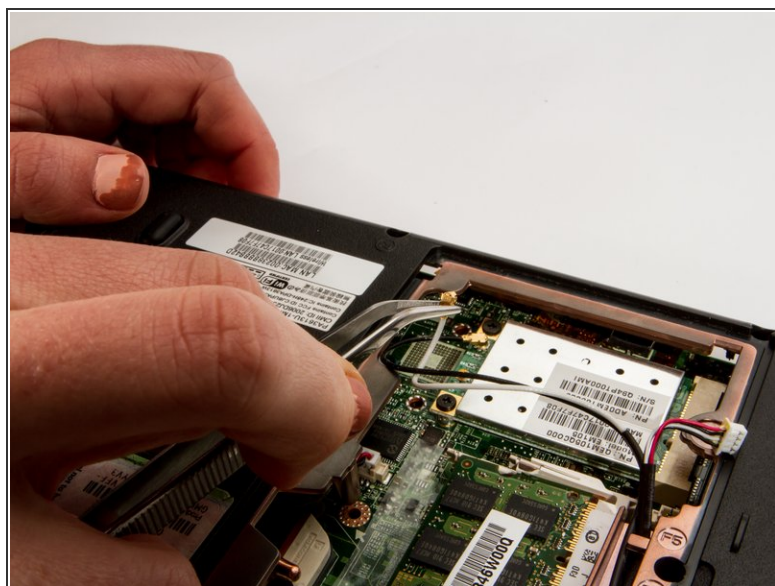
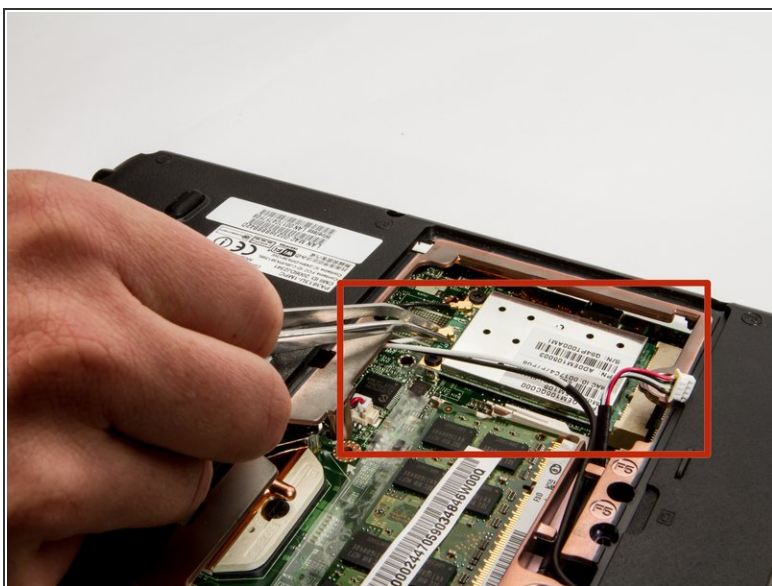
- Remove the three, 3 mm screws using the #1 Phillips Screwdriver.

## Step 11



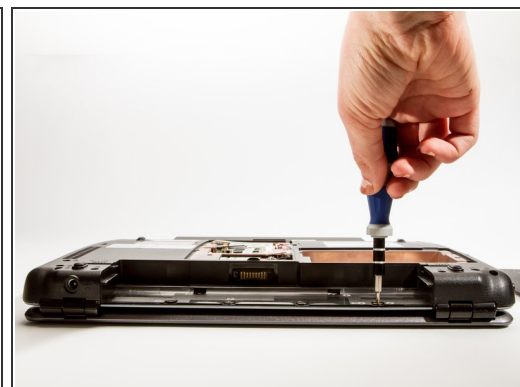
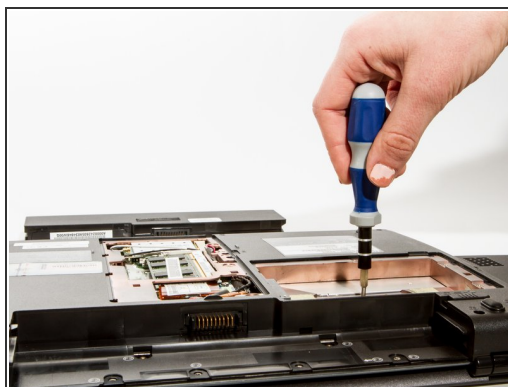
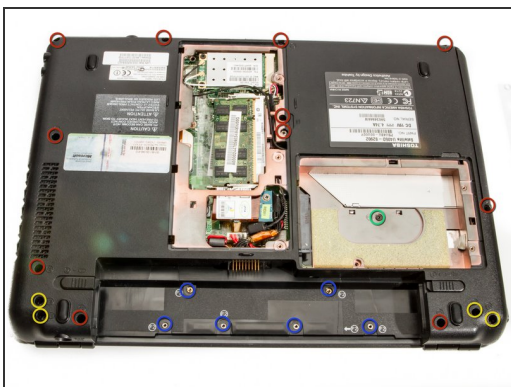
- Grasp the power cable with your tweezers and remove it from the wireless antenna.

## Step 12



- Locate and remove both the white and black antenna leads with the tweezers.

## Step 13



- Remove screws for back assembly.
- 11 x F5 (5 mm #1 Phillips)
- 6 x F2 (2 mm #0 Phillips)
- 4 x F8 (8 mm #1 Phillips)
- 1 x F3 (3 mm #1 Phillips)



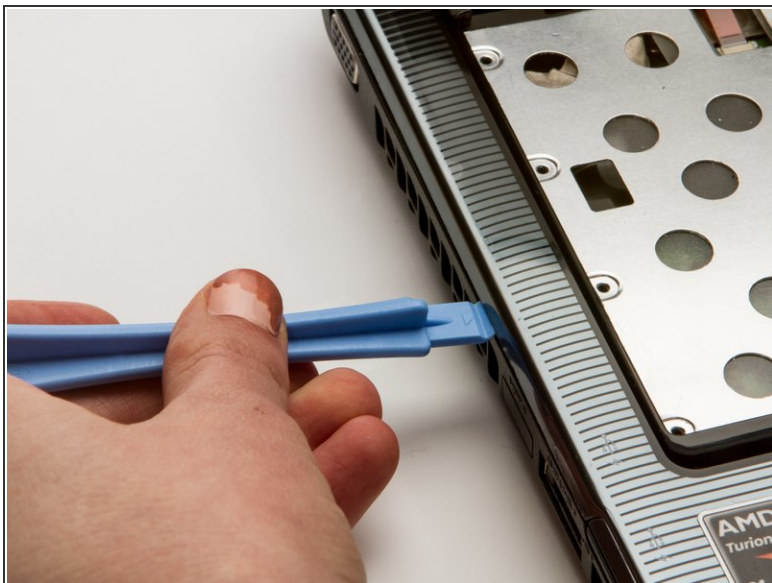
## Step 14



- Use the plastic opening tool to release the back panel from the laptop.
- ⓘ If all of the screws are removed it should come off with very little effort. Do not force it. If it still feels attached, check that you didn't miss a screw or two.

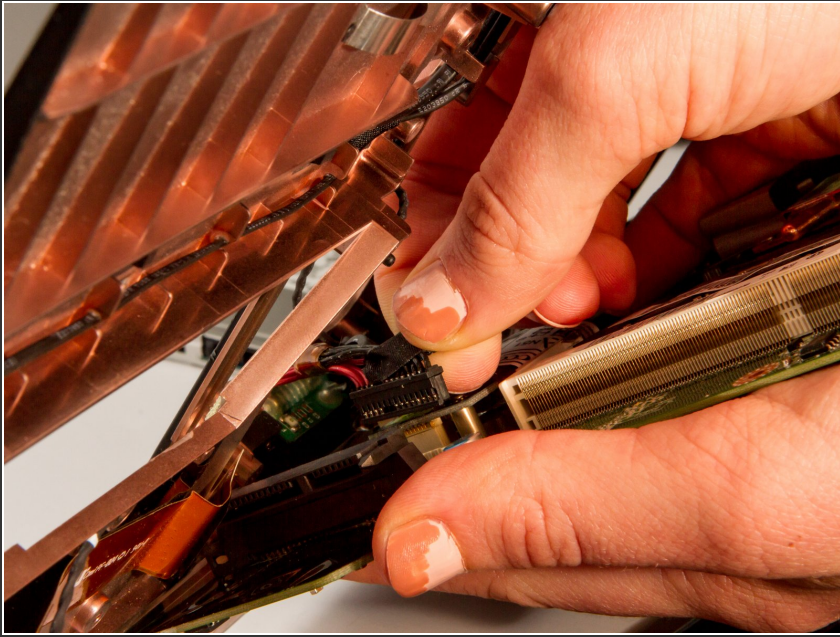


## Step 15



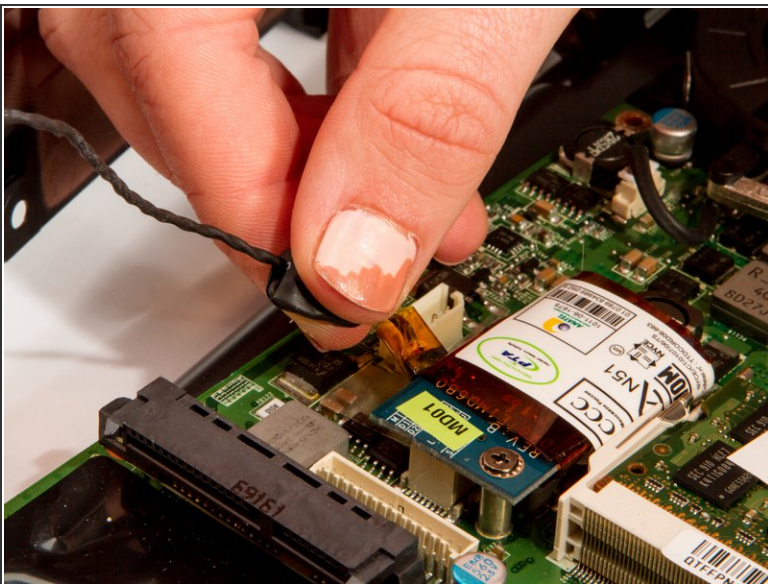
- Use the plastic opening tool to separate the top faceplate.
  - ⓘ The faceplate is the plastic surface and the metal piece under the keyboard.
- Carefully lift the faceplate off of the base by sliding the plastic opening tool around the outside of the device. You'll hear clicks as you do this.
  - ⚠ Prying apart the faceplate will be a little hard, but try not to bend it too much - you do not want to crack it.

## Step 16



- Lift the back panel and carefully disconnect the main power cable.

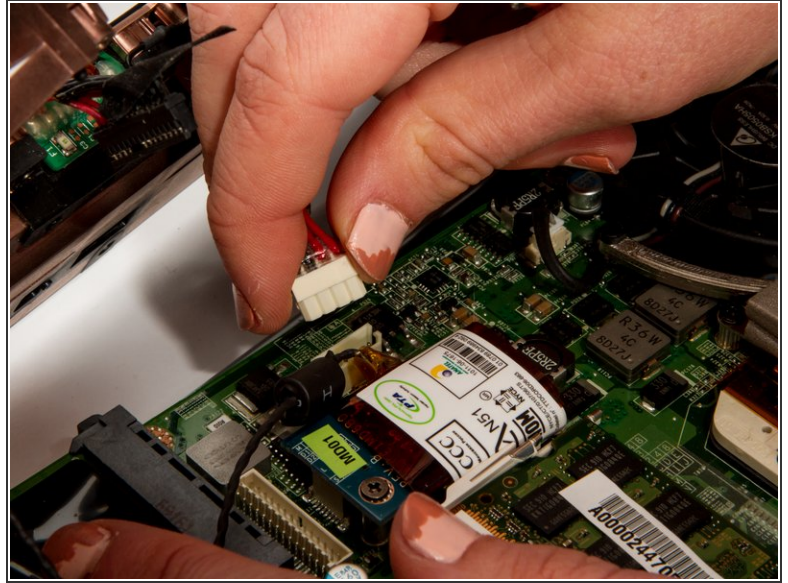
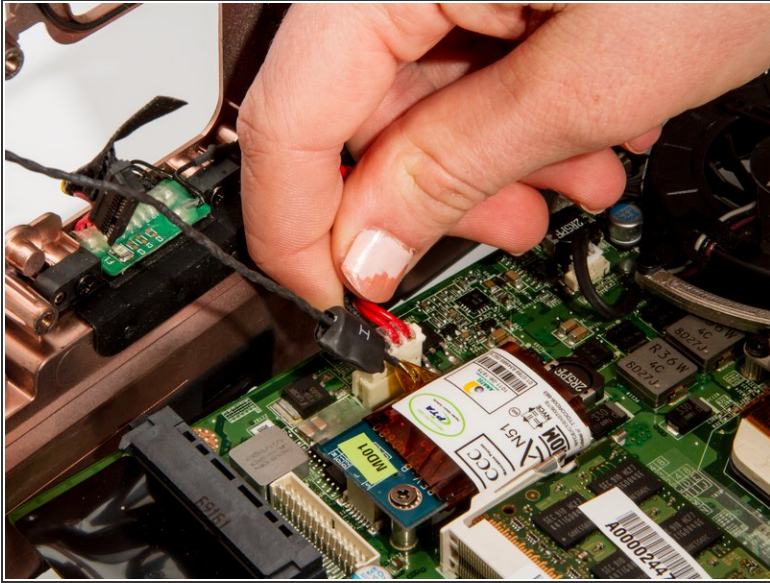
## Step 17



- Remove the black signal cable attached at the blue circuit board.



## Step 18



- Remove auxiliary power cable attached to the blue board at the back of the laptop.

To reassemble your device, follow these instructions in reverse order.