



# Breville Toaster Teardown

Breville Toaster Teardown

Written By: Ewan Mackay-Cruise



# INTRODUCTION

This teardown is done as to comply with task 2 IDES 2072, 2020. Photographed and written by Angelo Diaz, James Rosenberg, Jaya Yoannidis and Ewan Mackay-Cruise. Second year students of Bachelor of Industrial Design UNSW Sydney, Australia.



## TOOLS:

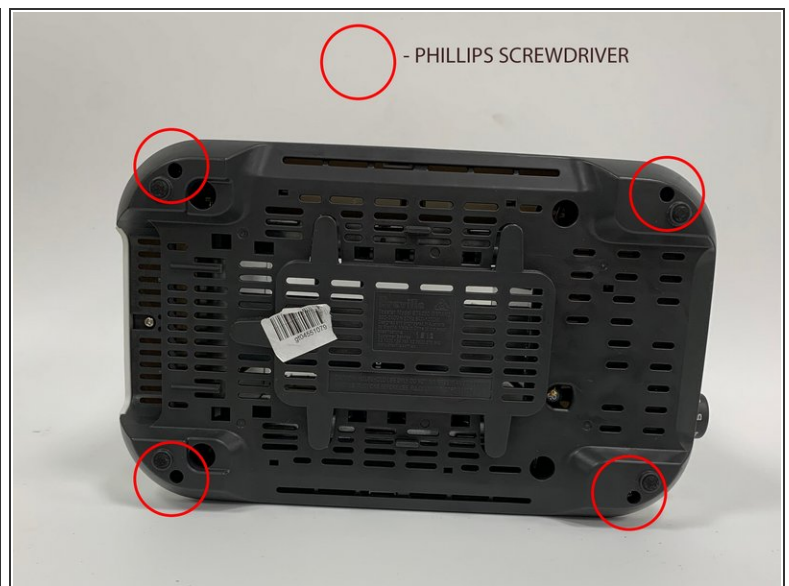
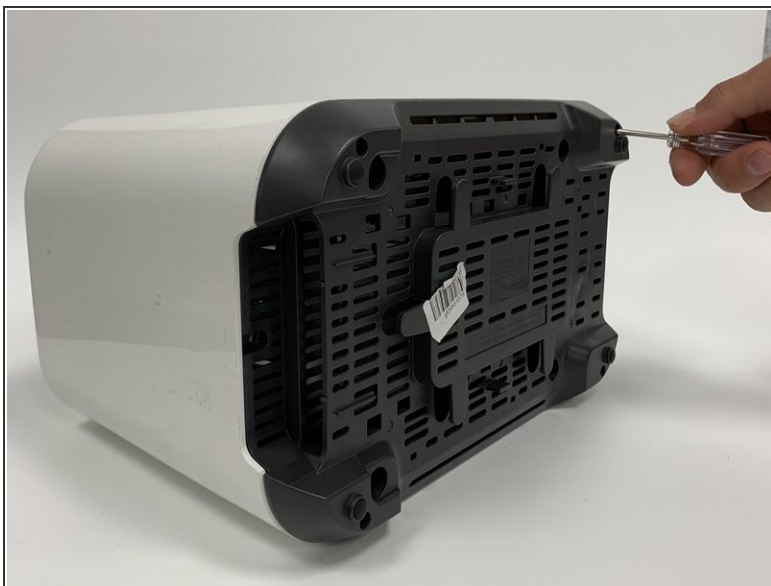
- [Phillips #0 Screwdriver](#) (1)
  - [Large Needle Nose Pliers](#) (1)
-

## Step 1 — Breville Toaster Teardown



- Breville Toaster.

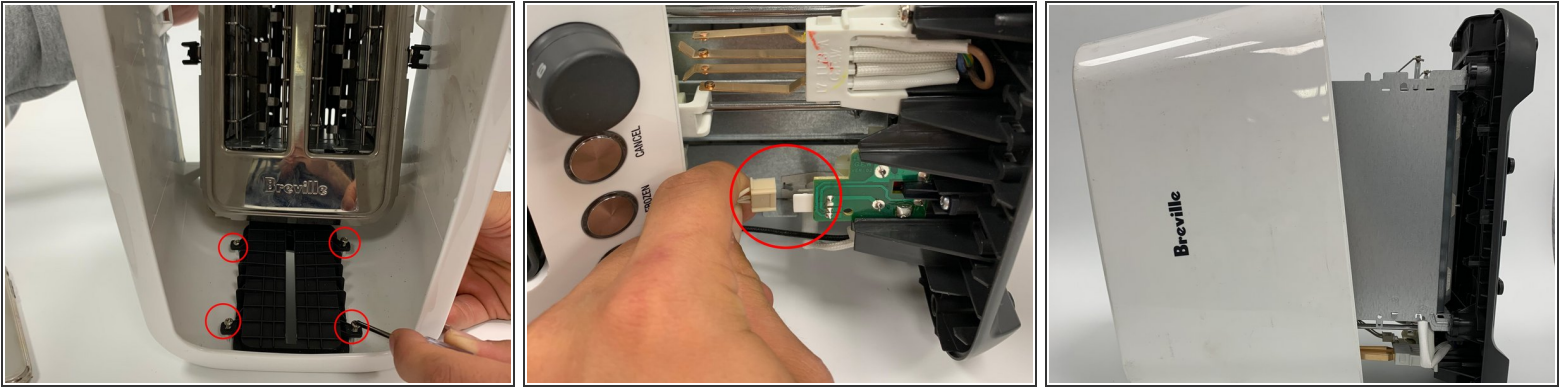
## Step 2



- Turn the toaster to its bottom side to locate the necessary screws needed for removal.
- Use a phillips screwdriver to unscrew the 4 screws as shown.
- After they're removed, seperate the bottom casing from the body in preparation for removal (see next step).

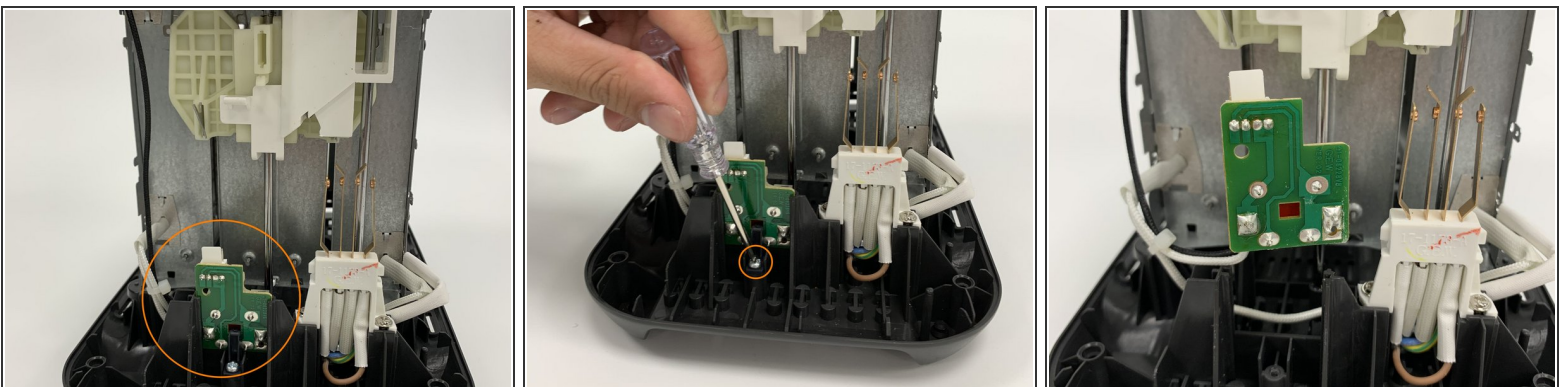
This document was generated on 2021-02-05 02:54:40 PM (MST).

### Step 3



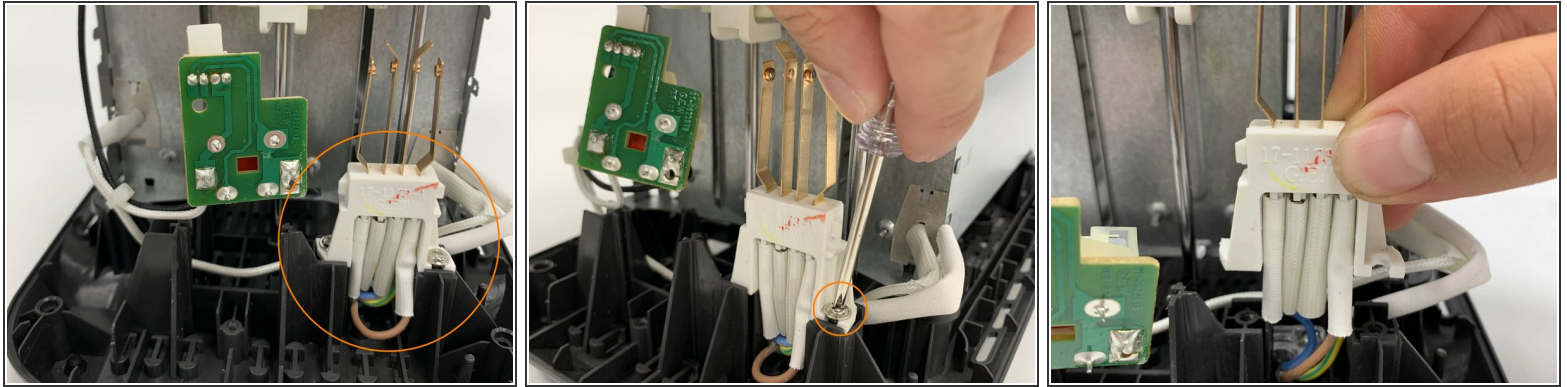
- Once removing the screws, partially separate the body from the white casing.
- As shown, there are 4 screws that have to be removed to fully separate the 2 parts.
- Use a phillips screwdriver to unscrew the screws.
- Flip the toaster on the other side and pull the highlighted wire to detach it from the bottom part.
- You can now separate the parts to give 2 separate parts. (The white casing and the electrical body).

### Step 4



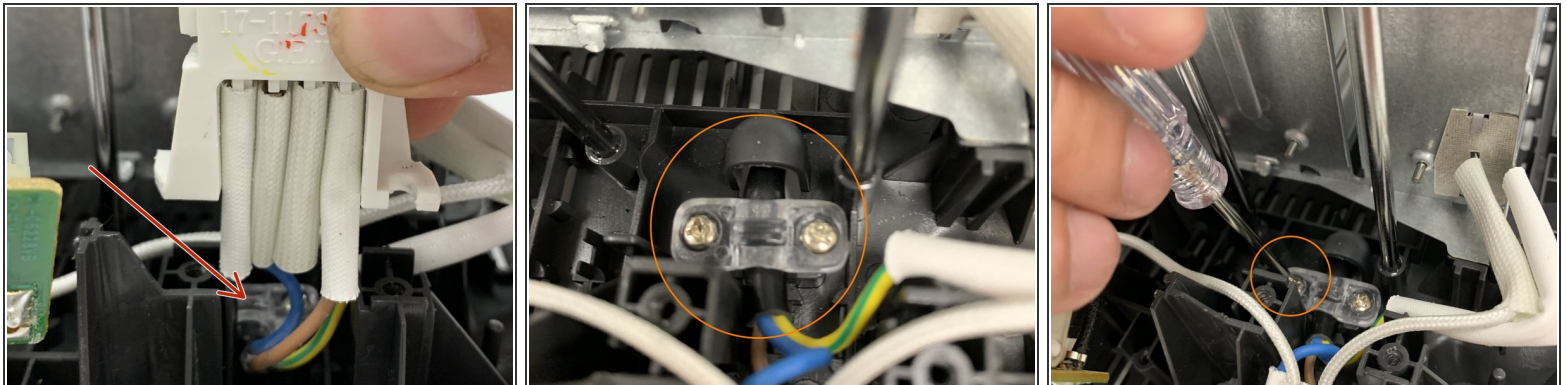
- To disconnect the base of the toaster you must unscrew single screw displayed in image. This is attaching the base of the toaster to the toaster's circuit board.
- Once this screw is removed the circuit board can be detached from the base of the toaster as shown.

## Step 5



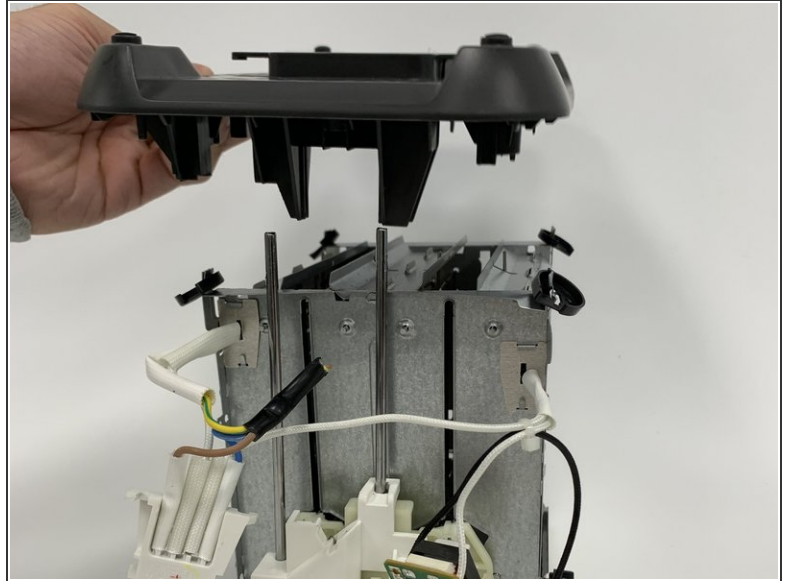
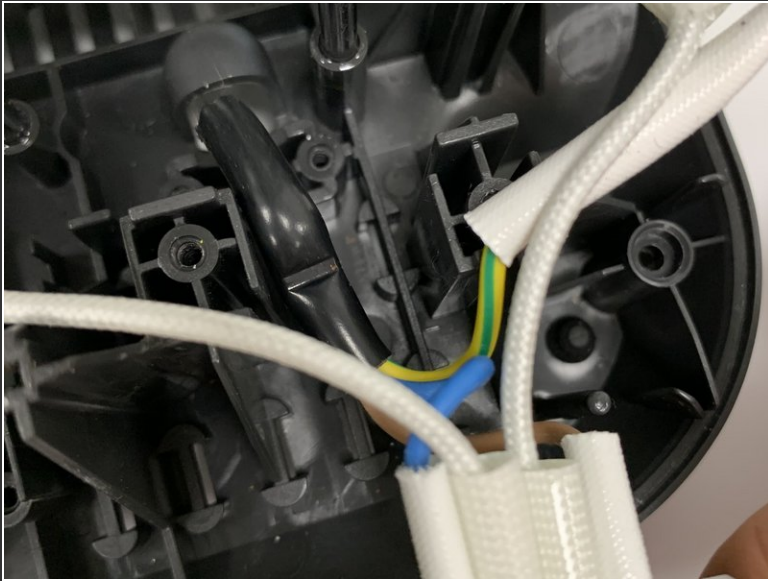
- Another component connected to the base of the toaster is electricity transformer.
- The transformer can also be detached from the base by removing a single screw as shown.
- Once the screw is removed the transformer is no longer attached to the base

## Step 6



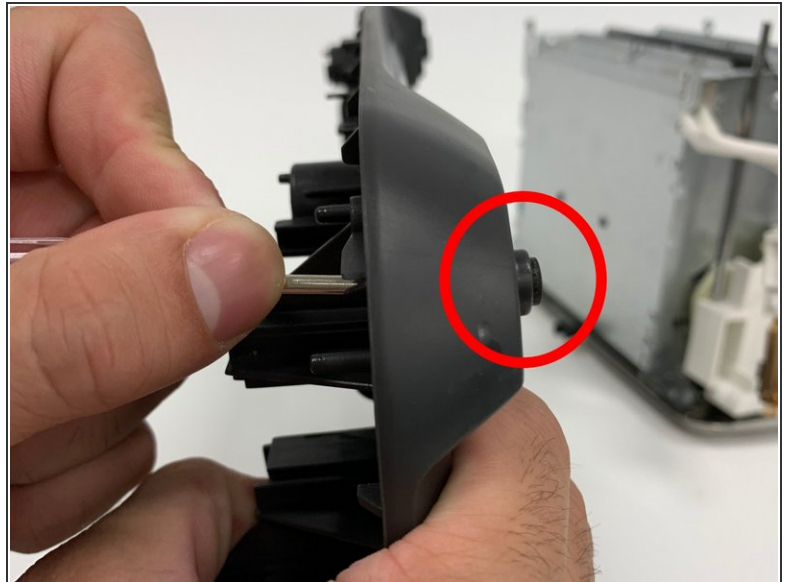
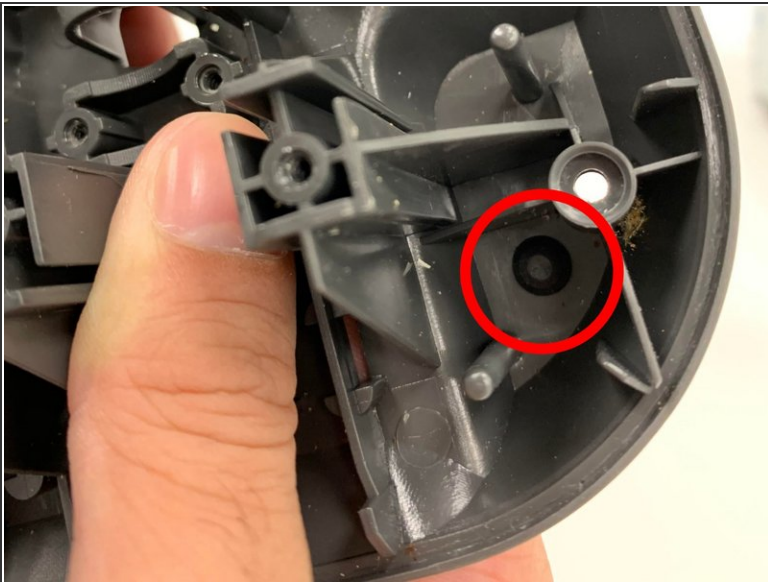
- Although the plastic casing of the transformer has been detached there is still a small piece of plastic holding down the connected wires of the transformer.
- This can be removed by unscrewing both screws displayed in the images.
- Once this piece of plastic is no longer bond by screws you are able to completely detach the transformer by pulling the wires out from inside the toaster.

## Step 7



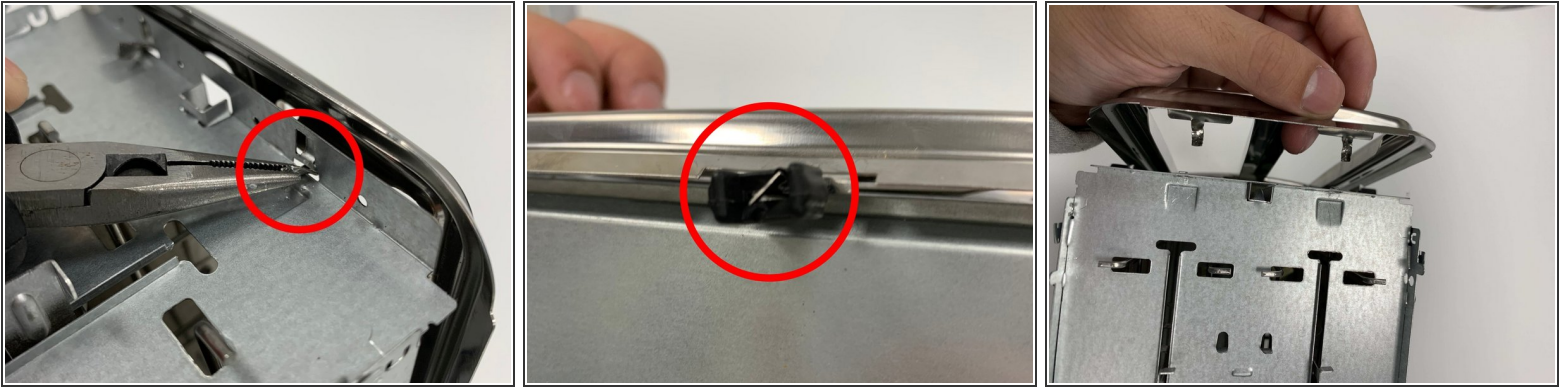
- Once the wires have been completely pulled out of the toaster the base can then be removed from the middle component.

## Step 8



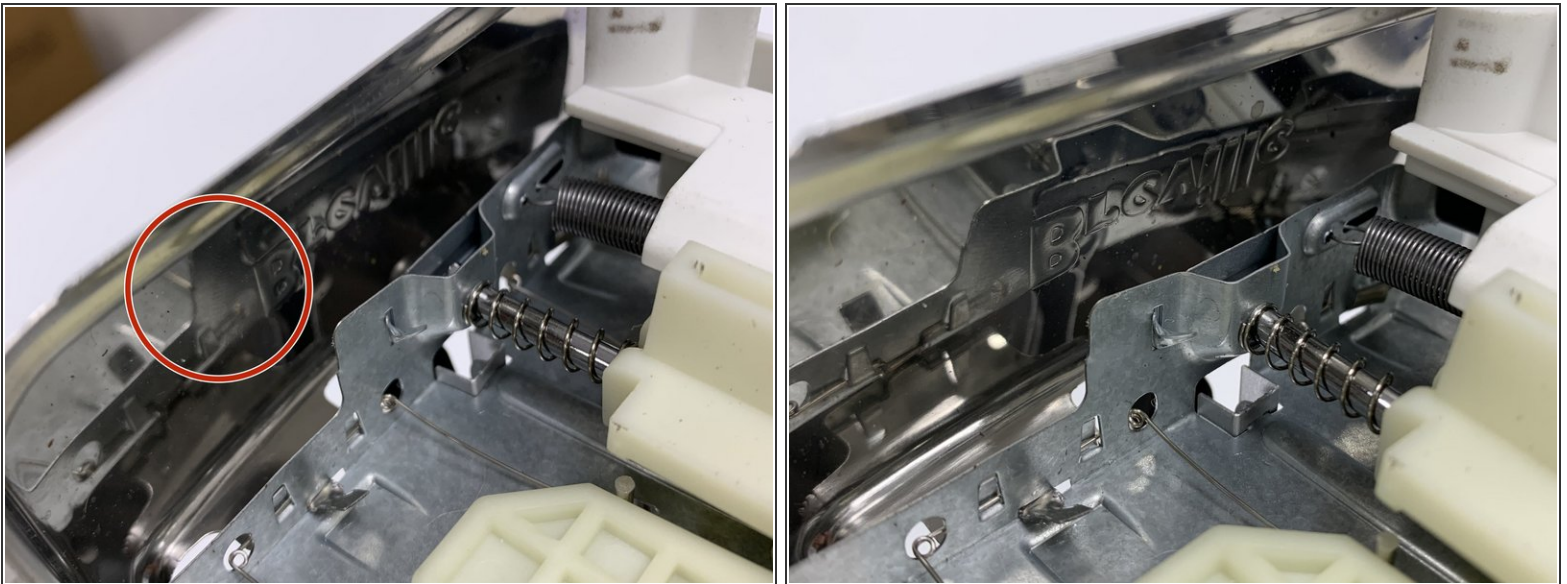
- Afterwards the base had rubber feet which were easily removed by inserting a metal rod to push out the rubber material.

## Step 9



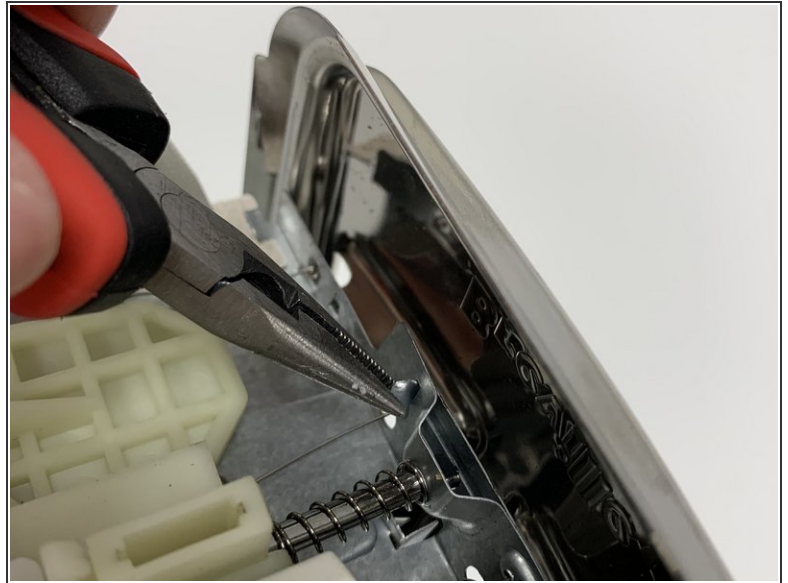
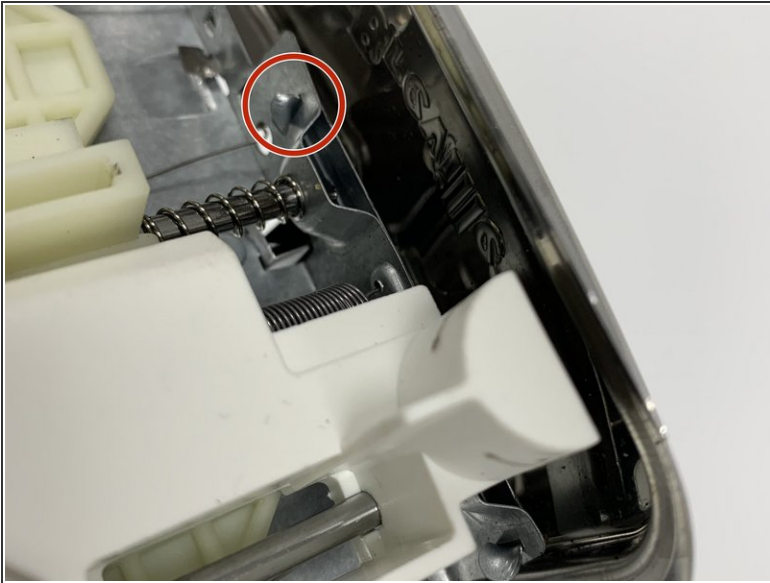
- Utilising pliers to remove the top lid off of the middle component.
- The tabs had to be pulled in order to remove the top lid from the overall base of the toaster.

## Step 10



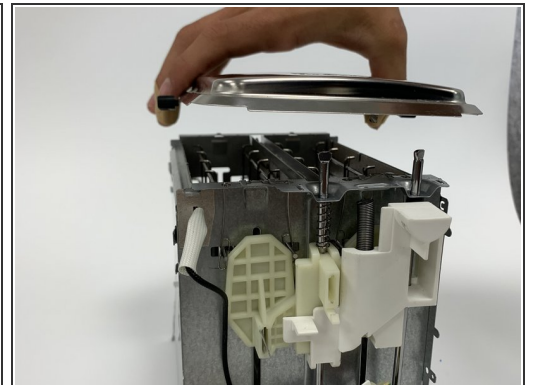
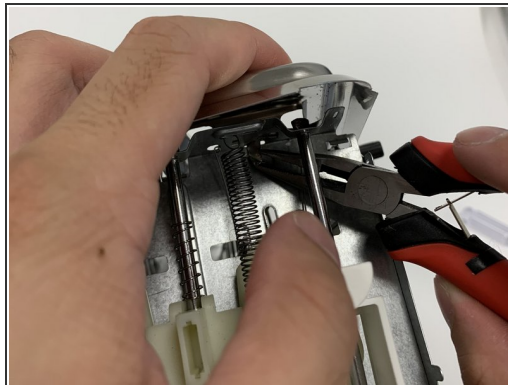
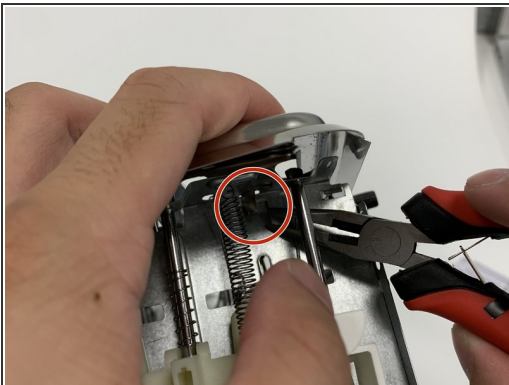
- Now do the same on the other side, pulling the tabs out using the pliers.

## Step 11



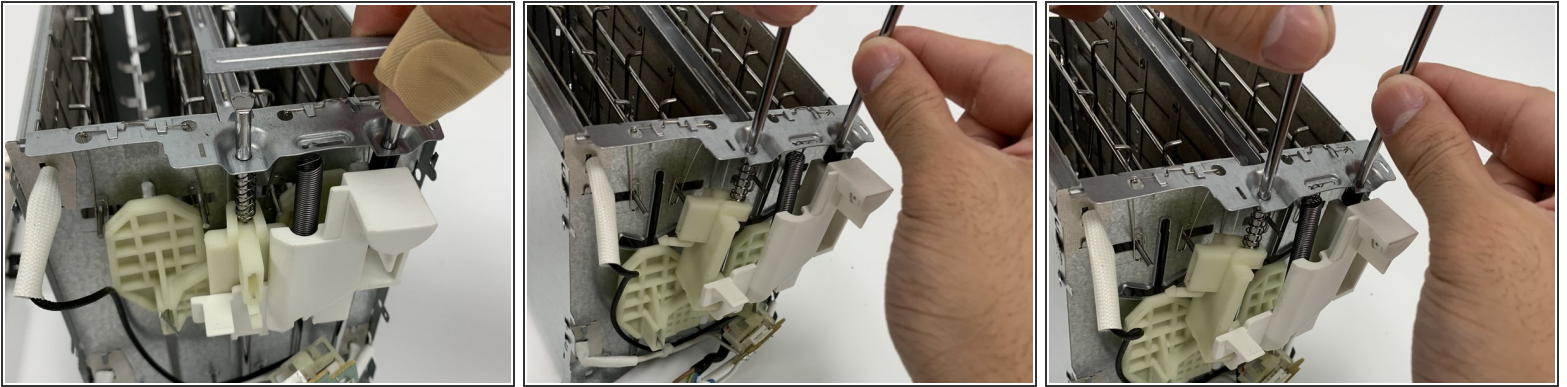
- Same applied here, using pliers pull out the tabs.

## Step 12



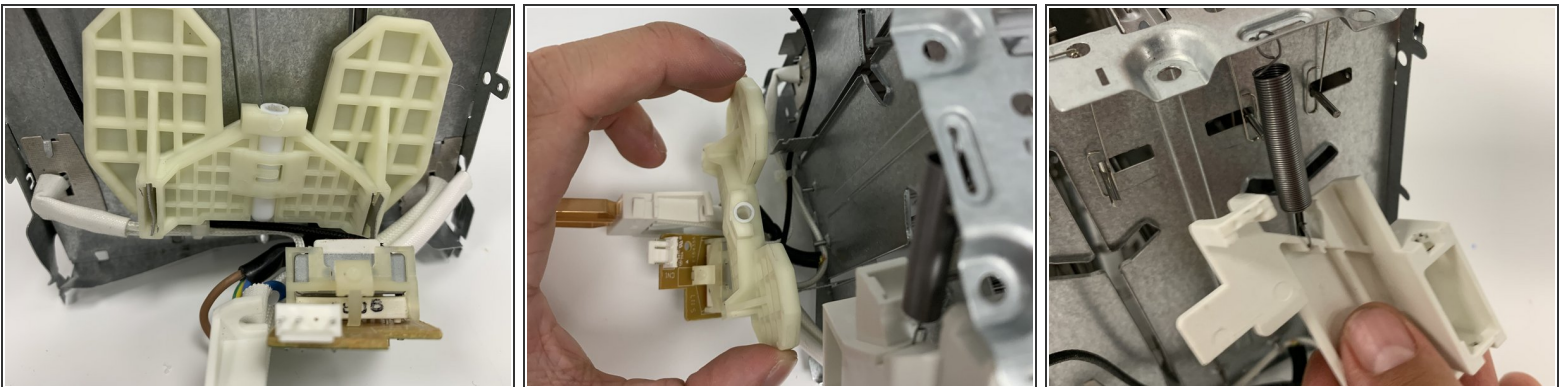
- Now that all the tabs on both sides are out, you can now remove the top case cover.

## Step 13



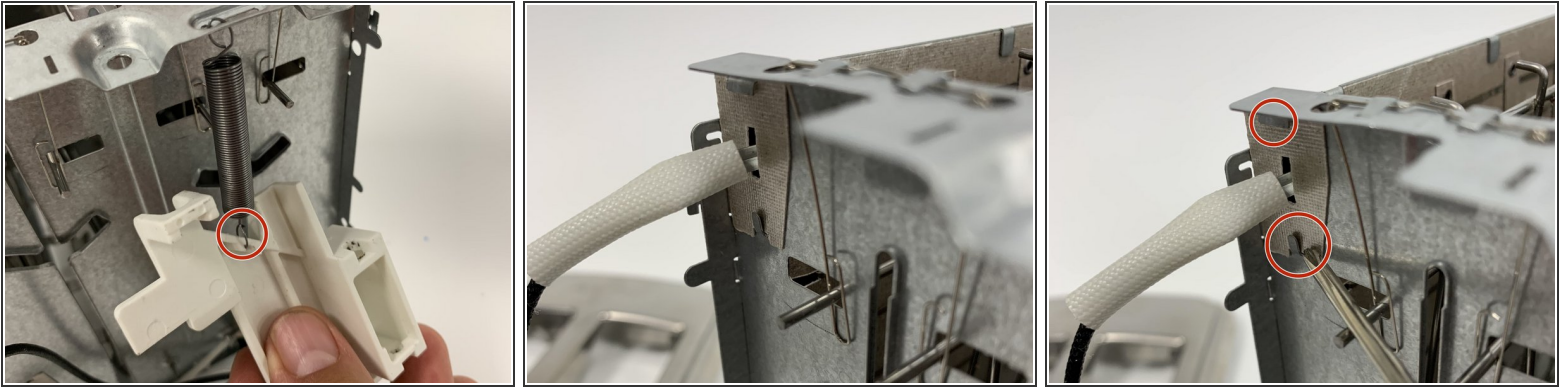
- Now you can remove the two rods supporting and attaching the plastic parts and wiring on the outside.
- These plastics parts will now easily come off, so be careful.

## Step 14



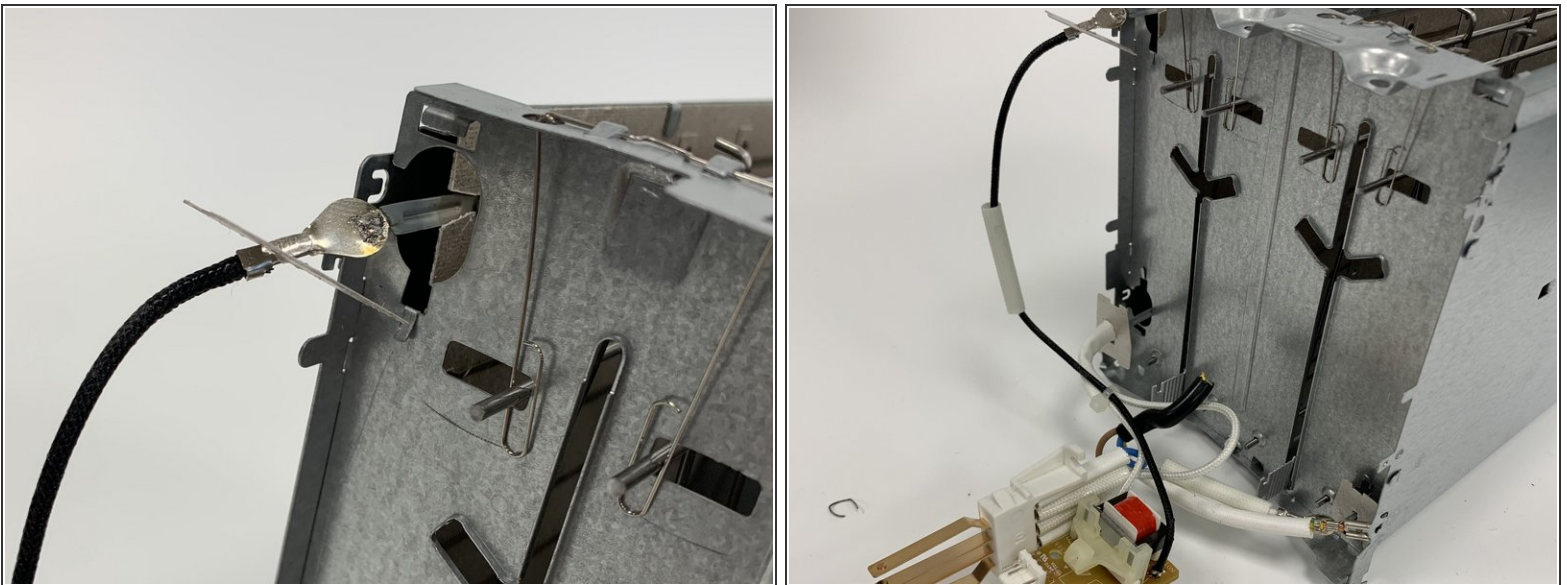
- The plastic parts should easily come off, however they are still attached to wires and are soldered on. They lead into the main chassis.
- The next step is to remove any wiring leading into the chassis.
- Be careful not to pull too hard on the pieces as there may be wires on the inside attached.

## Step 15



- Detach the spring from the plastic part.
- Remove the last wire from the internal chassis, the latches need to be pried back in order for this to open and be removed.

## Step 16



- Now that the latch is open you can remove the final wire attached to the plastic part. This concludes the teardown of removable parts within the toaster.
- Note: Removing other remaining parts may alter the function of the toaster as they are permanently joined.
- You have now completed the teardown.

