

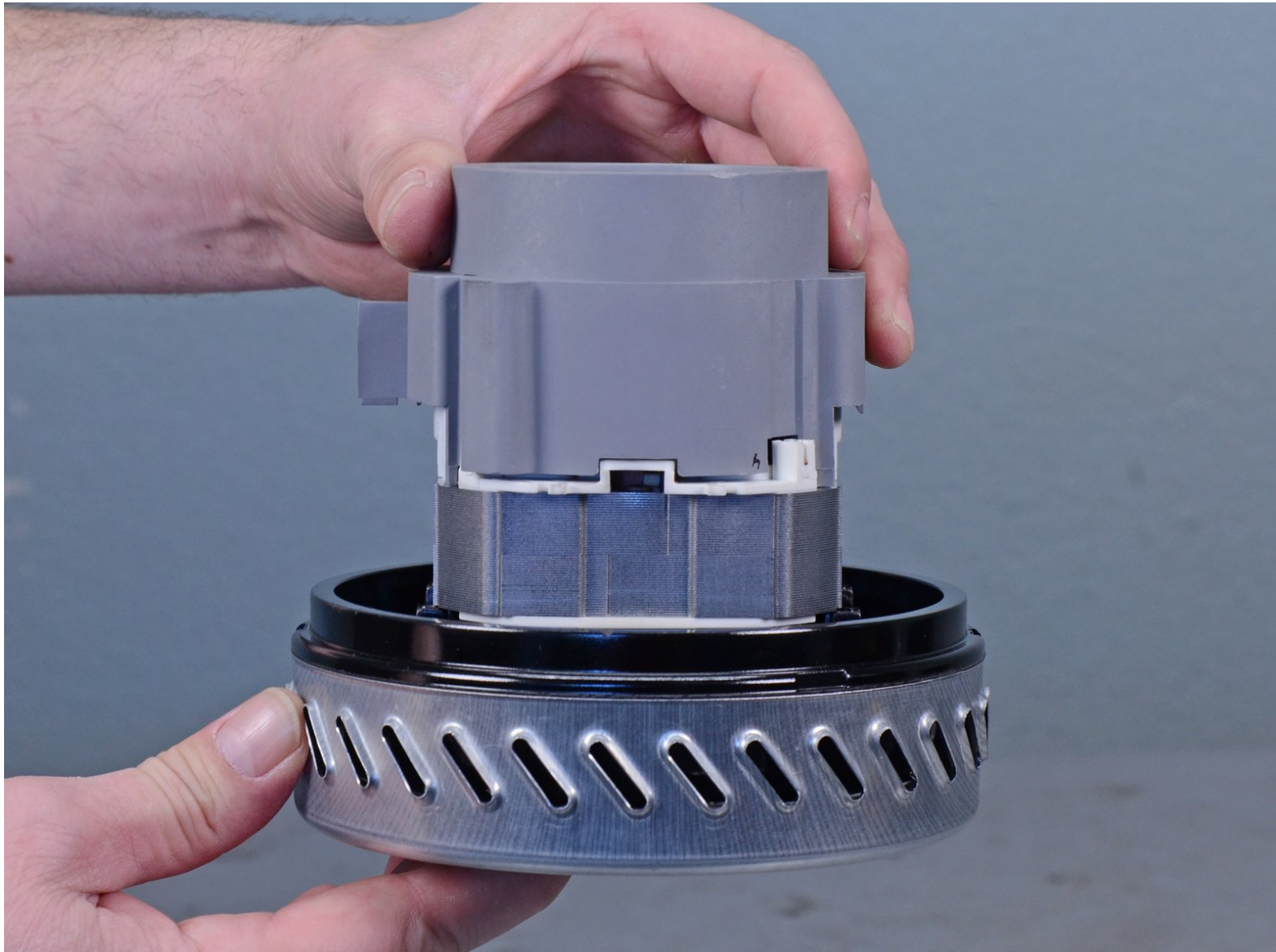


Karcher Vacuum Universal 14286230 2014

Vacuum Motor Replacement

Remove and replace the vacuum motor for a Karcher Vacuum Universal 14286230 2014.

Written By: Arthur Shi



INTRODUCTION

This guide shows how to remove and replace the vacuum motor for a Karcher Vacuum Universal 14286230 2014.

When you perform this repair, it is a good opportunity to replace the two rubber motor seals:

- [Part 6.903-300.0 \(69033000\)](#)
- [Part 6.903-246.0 \(69032460\)](#)



TOOLS:

- [T15 Torx Screwdriver](#) (1)



PARTS:

- [Karcher Motor Vacuum 120V 6.490-177.0](#) (1)

Step 1 — Unlatch the top assembly



i Before you begin, unplug the vacuum and disconnect all hose accessories.

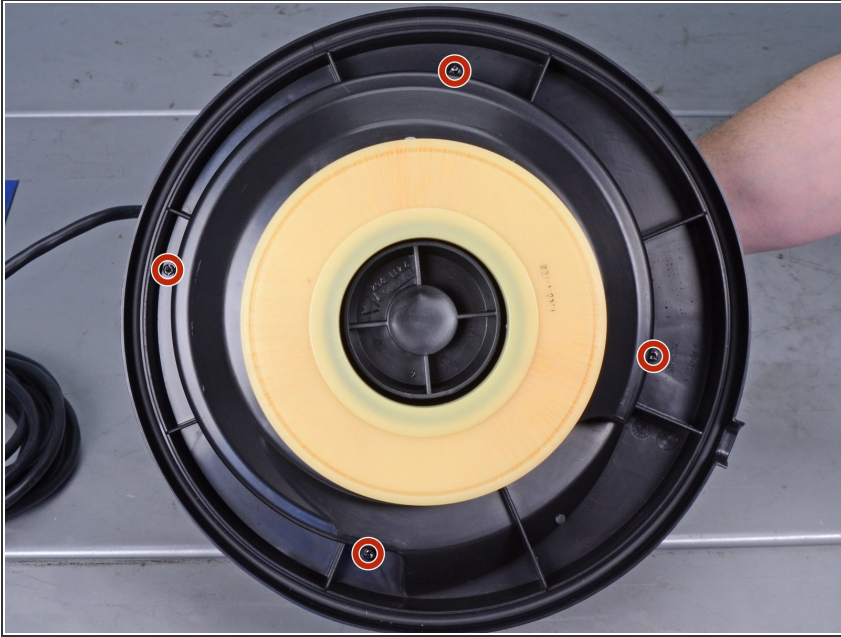
- Release the two latches locking the top assembly in place.

Step 2 — Remove the top assembly



- Lift and remove the top assembly from the tank.

Step 3 — Unscrew the top assembly



- Remove the four T15 screws securing the top assembly.

Step 4 — Disconnect the motor



- Carefully lift the motor/filter away from the housing until you can access the motor wires.
⚠ Do not separate the motor/filter from the assembly completely, or you risk damaging the motor wires.

Step 5



- Disconnect the two motor wires from the motor by pulling them straight out of their sockets.

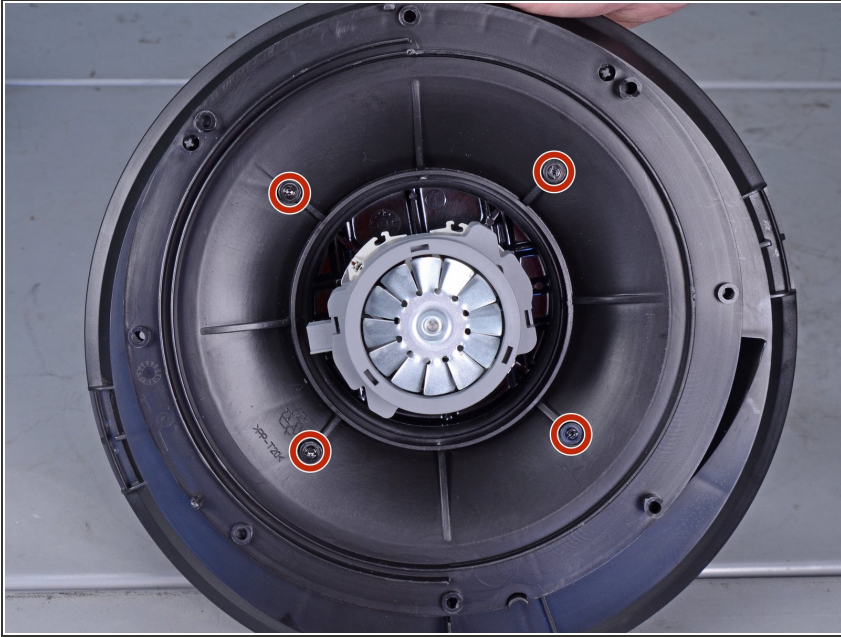
☑ **Reassembly tip:** The wires are not polarized and can be plugged into either socket.

Step 6 — Remove the motor/filter



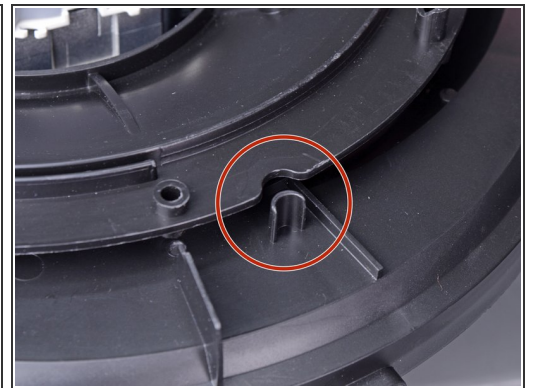
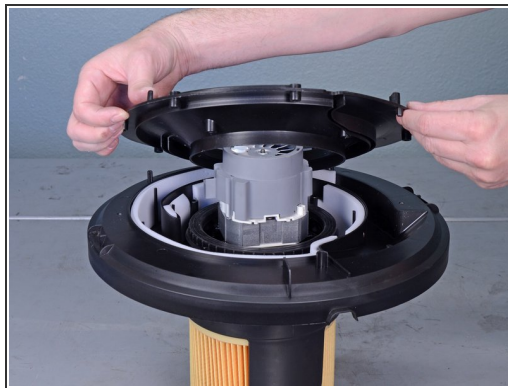
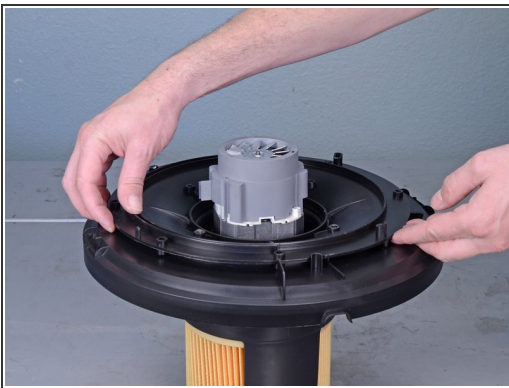
- You can now fully remove the motor/filter assembly from the housing.
- **Reassembly tip:** Use the alignment tab to help you align the motor/filter with the housing assembly.

Step 7 — Unscrew the motor flange



- Remove the four T15 screws securing the motor flange.

Step 8 — Remove the motor flange



- Lift the motor flange and remove it from the motor assembly.
- **Re-assembly tip:** Use the marked notch to help you align the motor flange to the assembly.

Step 9 — Remove the motor



- Lift the motor straight out of the assembly and remove it.

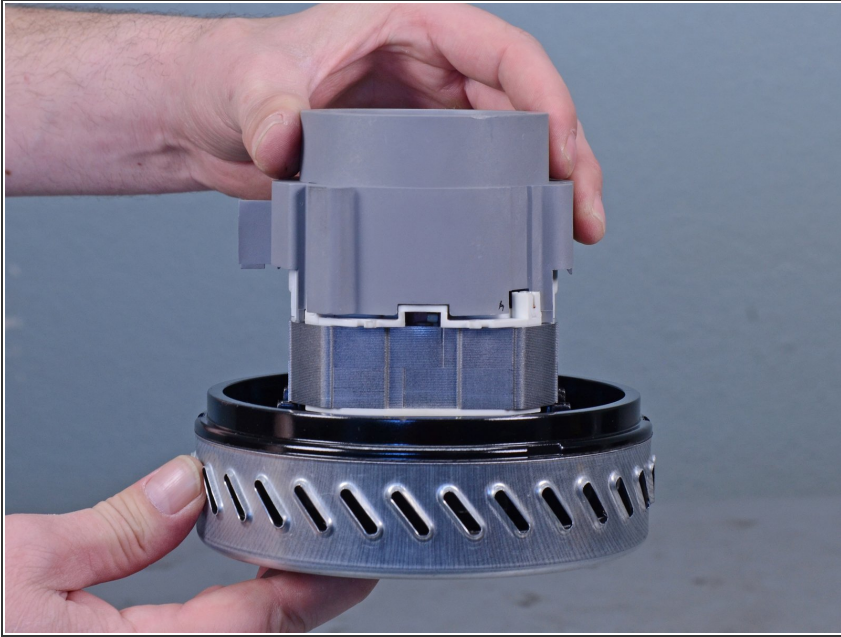
✦ **Re-assembly tip:** The motor is not keyed into the assembly. As long as the motor wires can reach their sockets, the motor can sit in any rotation.

Step 10 — Transfer the rubber seals



- Peel and remove the two black rubber seals from the motor.
- Transfer the rubber seals to the replacement motor.
- ⓘ If the seals look torn or worn, discard the used seals and install replacements.

Step 11



- Only the motor remains.

To reassemble your device, follow these instructions in reverse order.