



Replacement Switch for Angle Grinder Dexter UP20

Written By: Antoine Lafillé

Step 1 — Switch



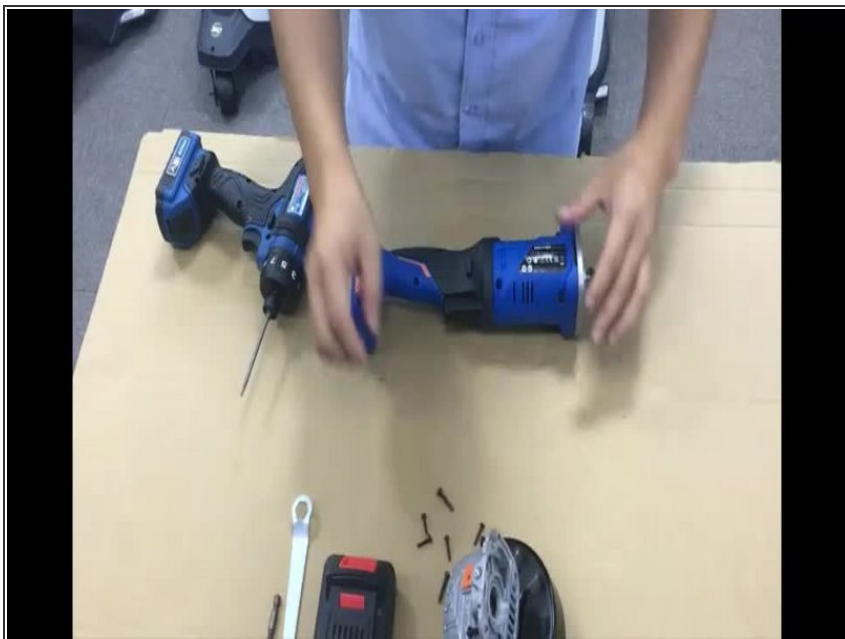
- Remove the battery and disassemble the Grinding Head.

Step 2



- Remove the screws from the body of the tools.

Step 3



- Remove the top case. Remove the Switch button, the Immobiliser Trigger and then the Engine.

Step 4



- Remove the faulty switch and the electronic part.

Step 5



- Assemble the new Switch and electronic components.

Step 6



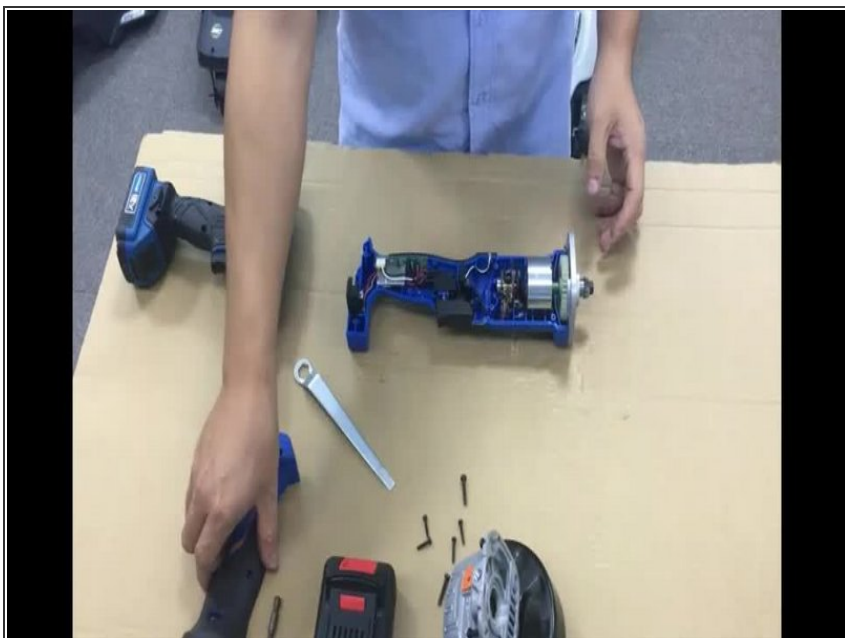
- Re-assemble the Engine by keeping the coals apart.

Step 7



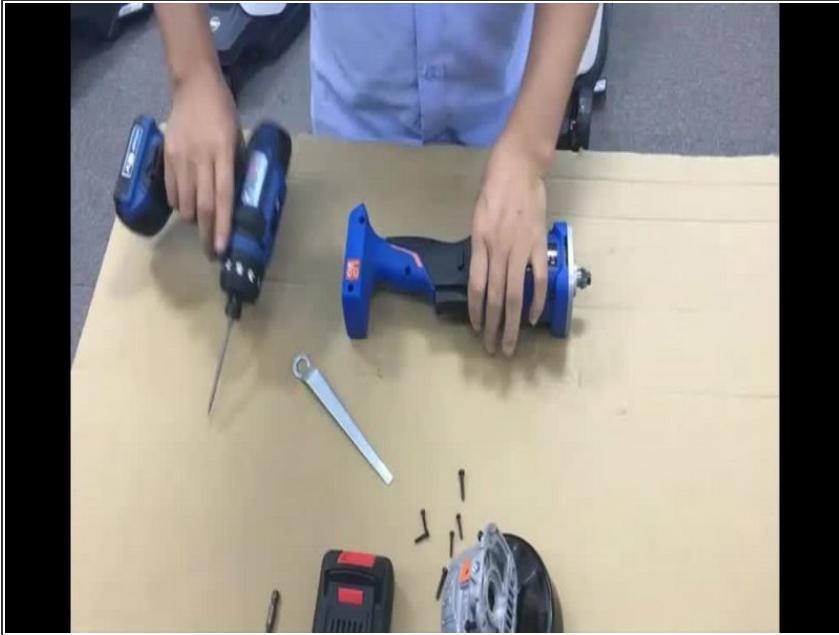
- Adjust the position of the wiring. Re-assemble the Immobiliser Trigger and then the Switch Button.

Step 8



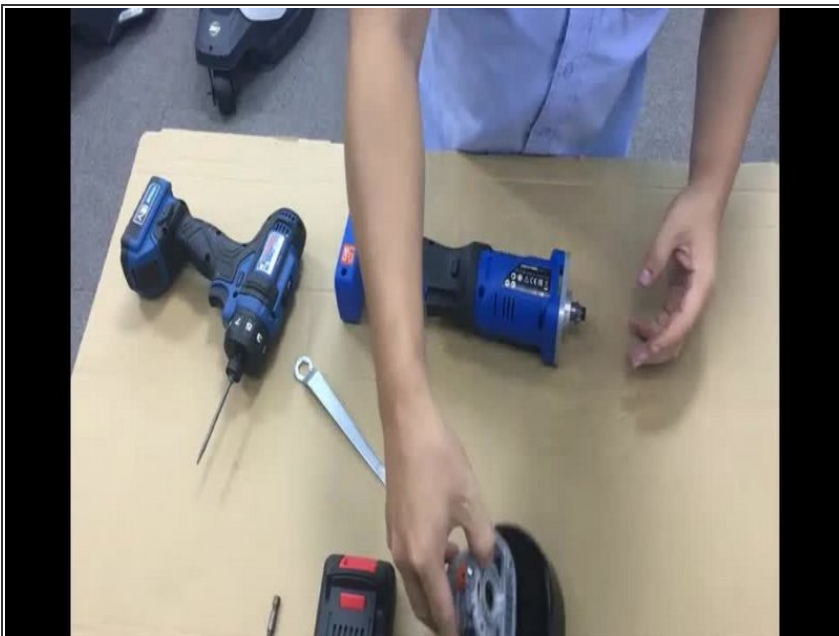
- Re-assemble the top shell.

Step 9



- Re-screw the Upper Shell.

Step 10



- Re-assemble the Grinding Head while respecting the decessers.

To reassemble your device, follow the instructions in reverse order.