



# Servo-i Ventilator Patient Unit Front Cover Replacement

How to open the patient unit and disassemble it for service.

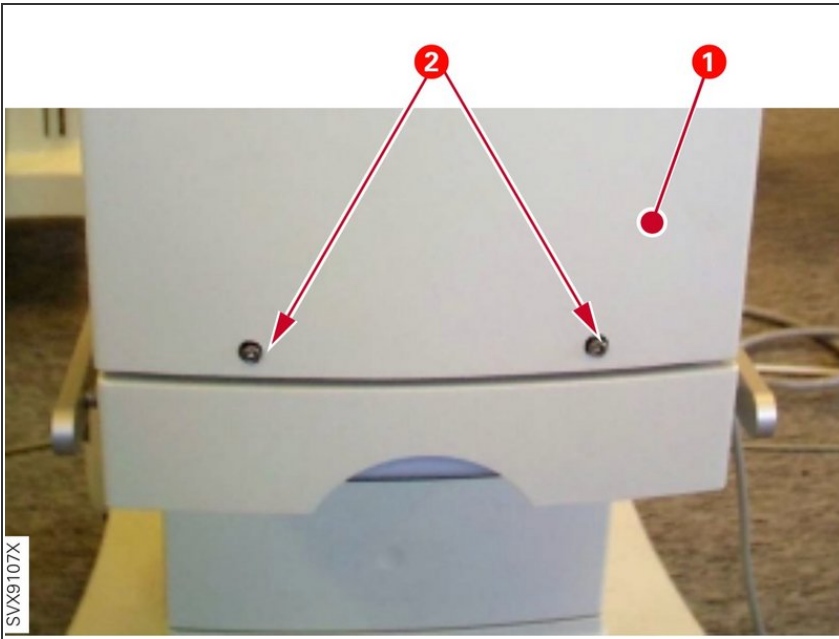
Written By: Jeff Suovanen



# INTRODUCTION

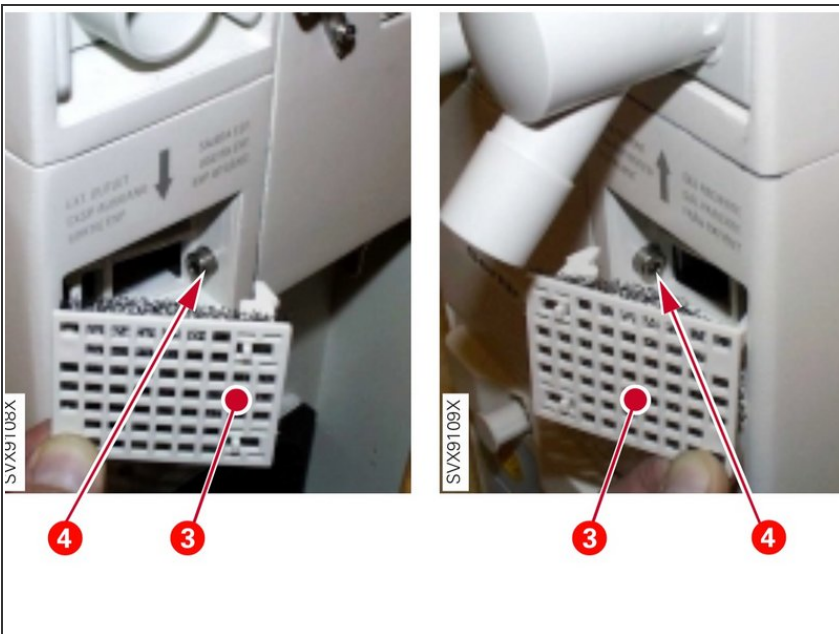
Servicing the patient unit internal components requires first removing the front cover.

## Step 1 — Patient Unit Front Cover



- Remove the two screws (2) securing the front cover (1).

## Step 2



- (3) Remove the two ventilation covers.
- (4) Remove one screw from underneath each ventilation cover (two screws total).

## Step 3



- Lift and remove the front cover from the patient unit.

To reassemble your device, follow these instructions in reverse order.