



MacBook Pro 13" Retina Display Late 2012

Logic Board Assembly Replacement

Prereq only.

Written By: Andrew Optimus Goldheart



INTRODUCTION

Prereq only.



TOOLS:

- [Spudger](#) (1)
 - [T5 Torx Screwdriver](#) (1)
-

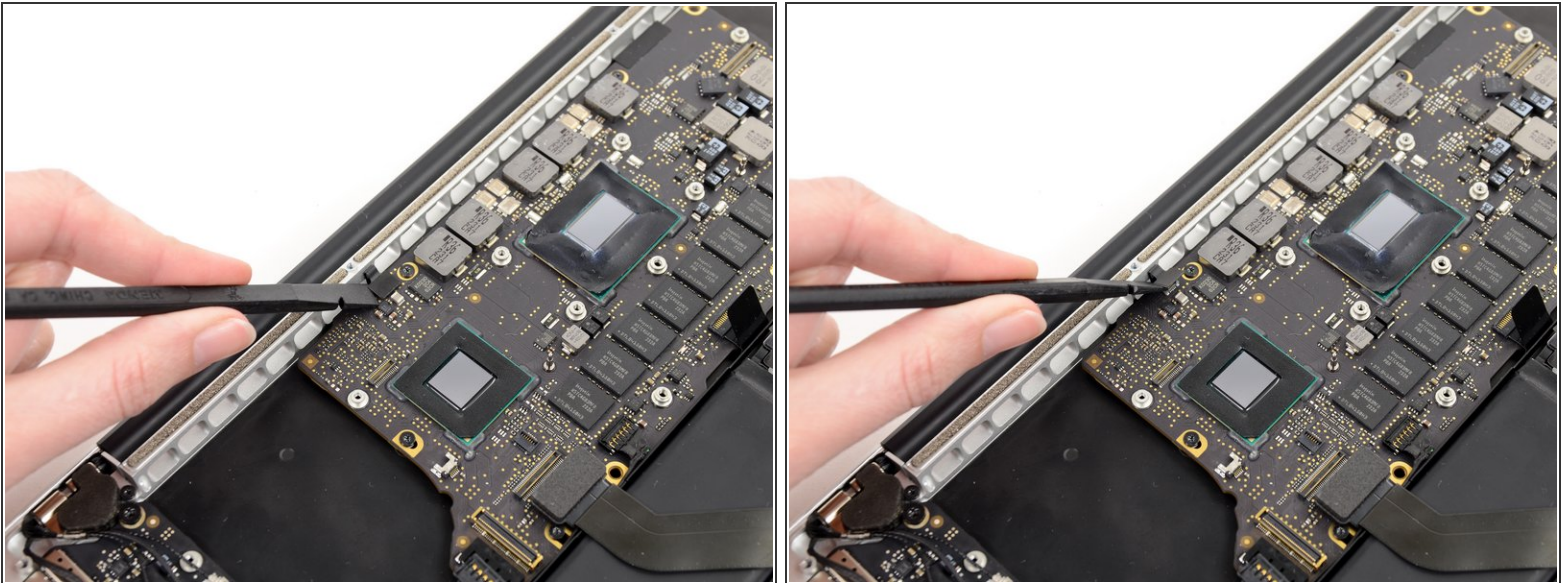
Step 1 — Logic Board Assembly



- Use the tip of a spudger to push the edges of the I/O board connector straight out of its socket on the logic board.

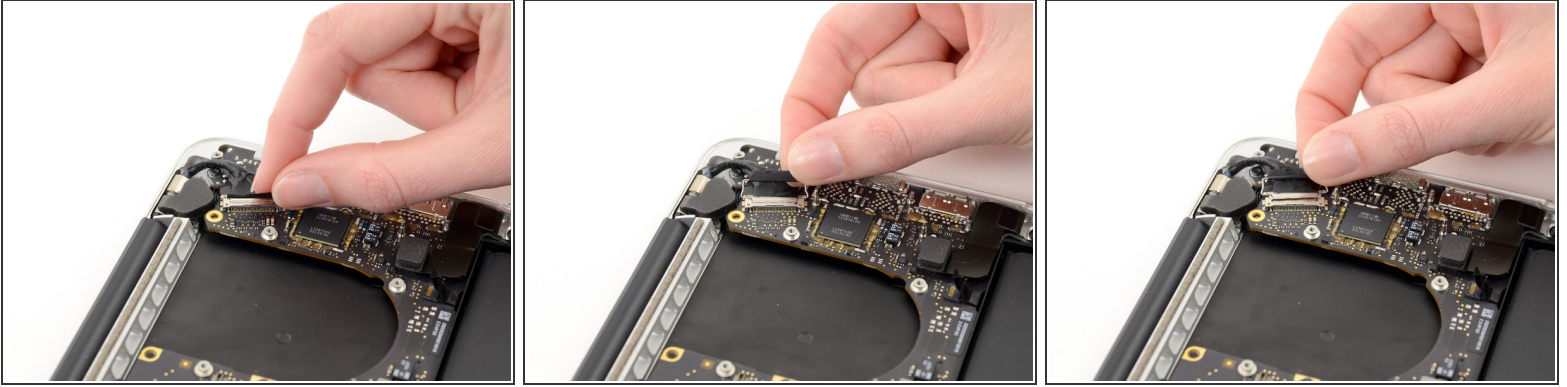
i It is recommended to carefully push on both sides of the connector to "walk" it out of its socket.

Step 2



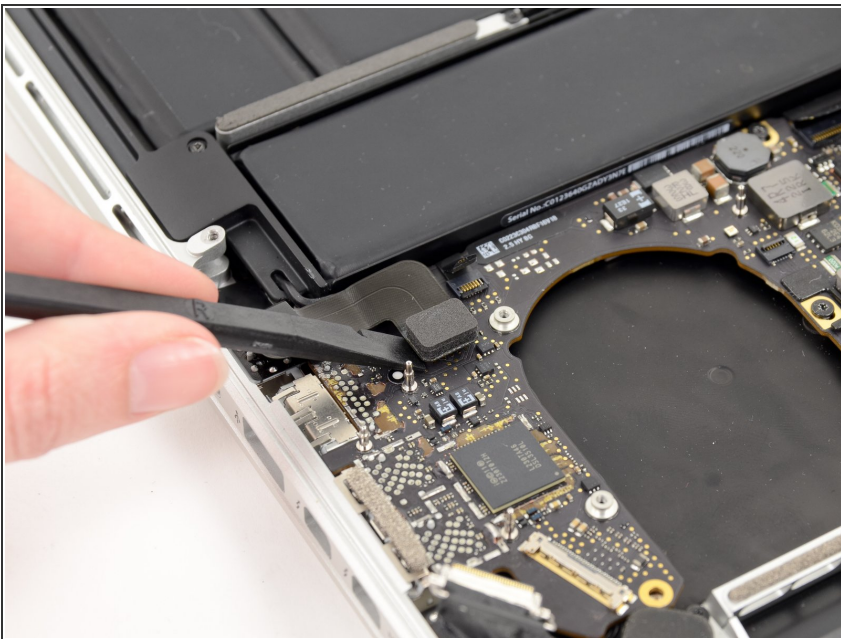
- Wedge the flat end of a spudger underneath the keyboard backlight connector and the logic board.
- Gently twist the flat end of a spudger upwards to pry the keyboard backlight connector up off its socket on the logic board.

Step 3



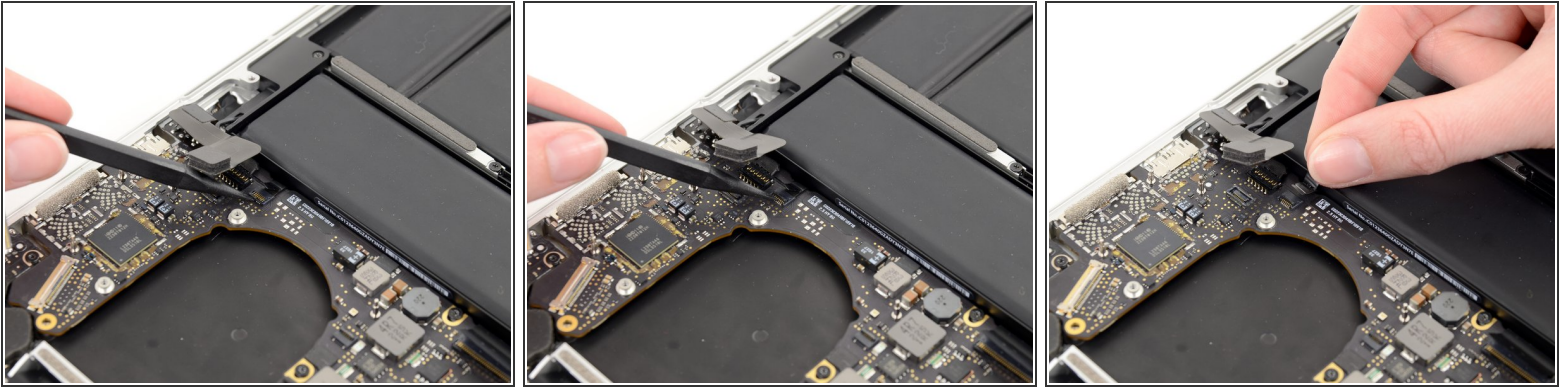
- Grab the black pull tab secured to the display data cable lock and rotate it toward the DC-In side of the computer.
 - Pull the display data cable straight out of its socket on the logic board.
- ⚠ Do not lift up on the display data cable, as its socket is very fragile. Pull the cable parallel to the face of the logic board.

Step 4



- Pry the headphone jack cable connector up off its socket on the logic board.

Step 5

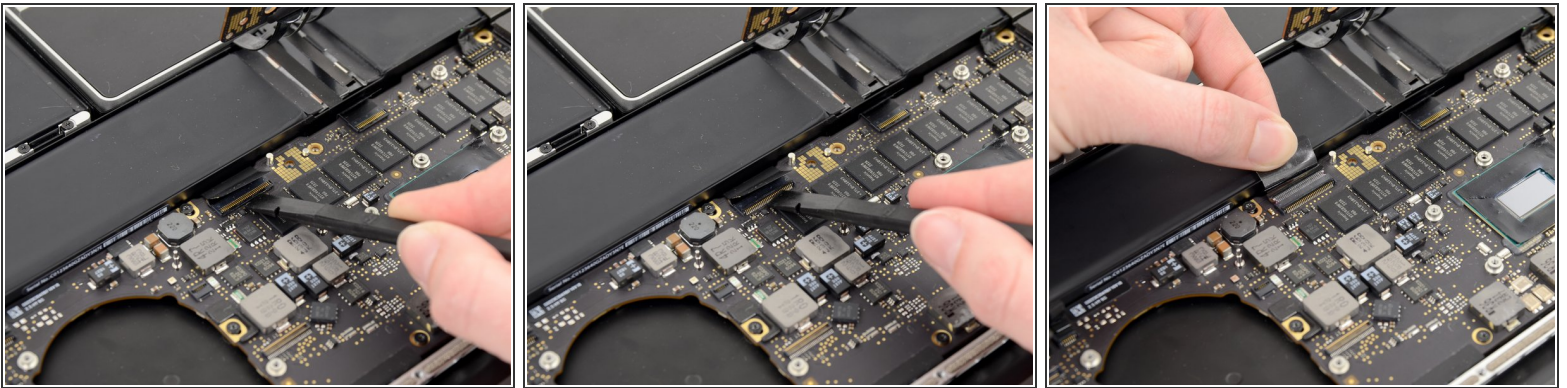


- Use the tip of a spudger to flip up the retaining flap on the microphone ribbon cable ZIF socket.

⚠ Be sure you are prying up on the hinged retaining flap, **not** the socket itself.

- Grasp the plastic pull tab and pull the microphone ribbon cable out of its socket.

Step 6

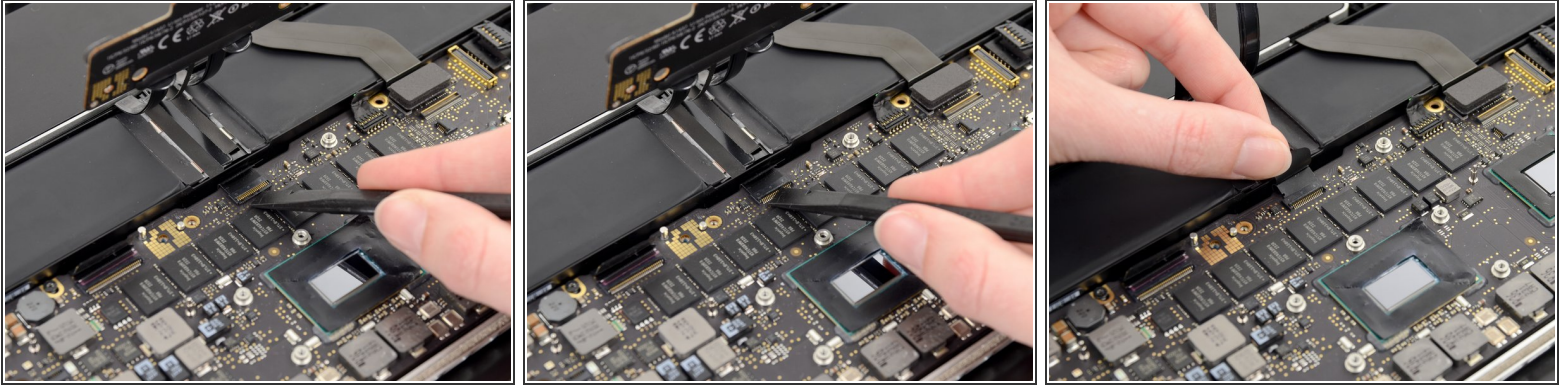


- Use the flat edge of a spudger to flip up the retaining flap on the keyboard ribbon cable ZIF socket.

⚠ Be sure you are prying up on the hinged retaining flap, **not** the socket itself.

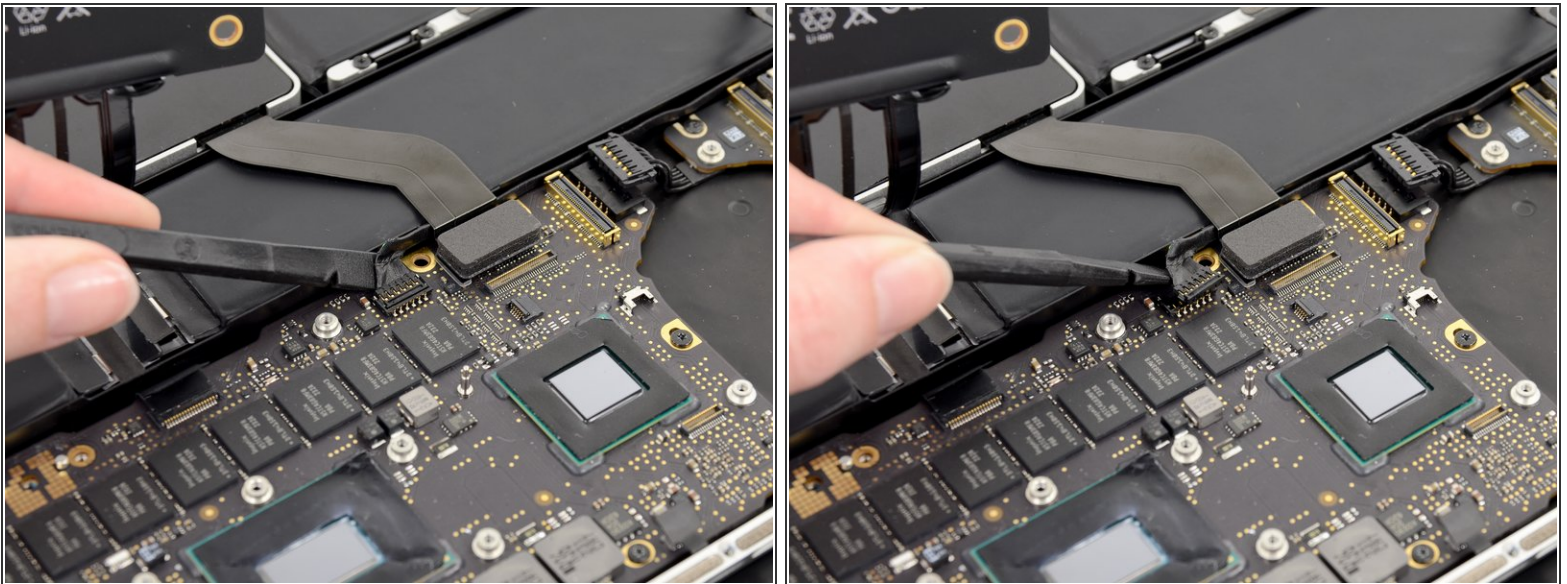
- Grasp the plastic pull tab and pull the keyboard ribbon cable out of its socket.

Step 7



- Repeat the previous procedure to disconnect the Trackpad ribbon cable from its socket on the logic board.

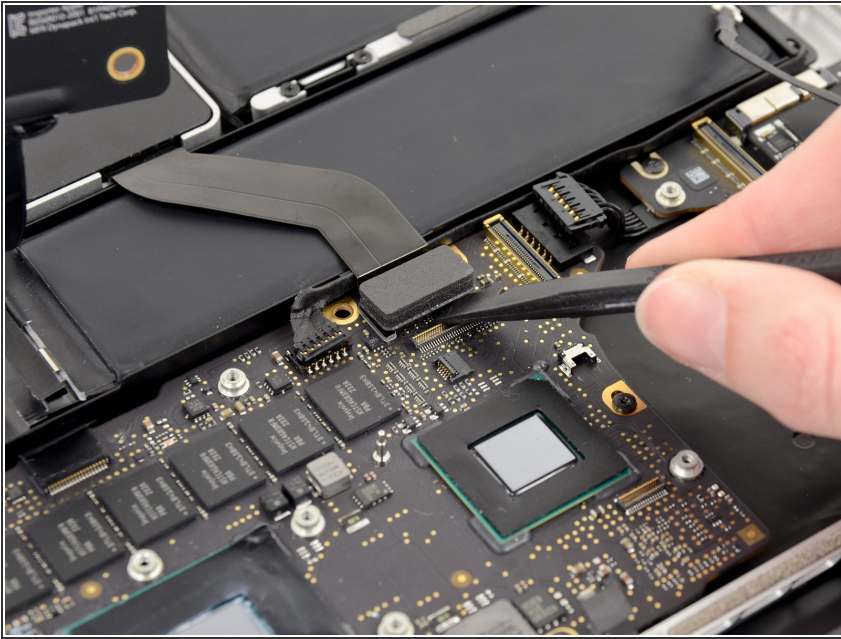
Step 8



- Wedge the flat end of a spudger beneath the right speaker cable connector.
- Gently pry the right speaker cable connector up off from its socket on the logic board.

⚠ Be sure you are prying up on the connector, **not** the socket itself.

Step 9



- Use the flat end of a spudger to pry the SSD cable connector up off its socket on the logic board.

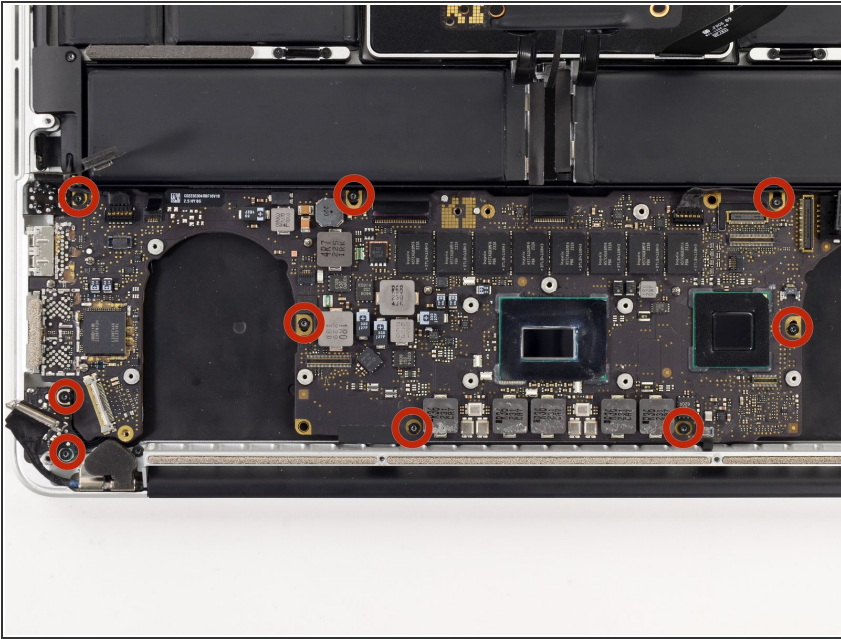
Step 10



- Wedge the tip of a spudger beneath the left speaker cable connector.
- Gently pry the left speaker cable connector up off from its socket on the logic board.

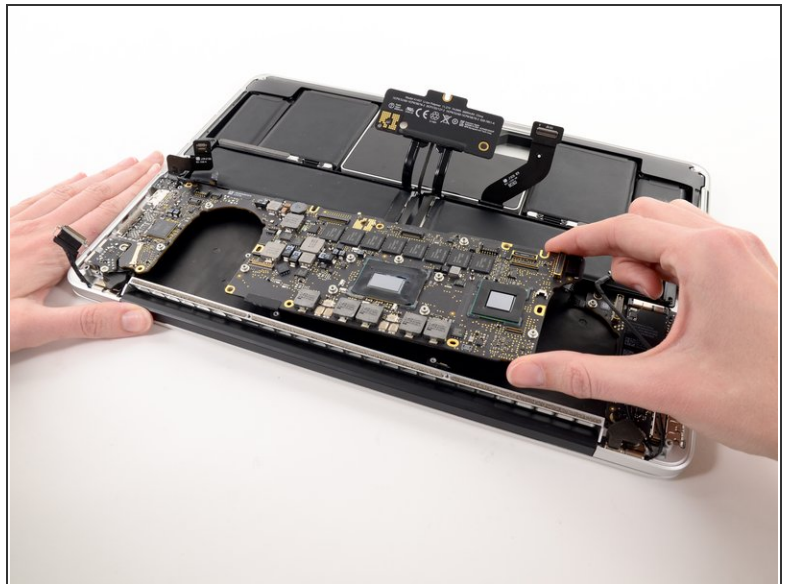
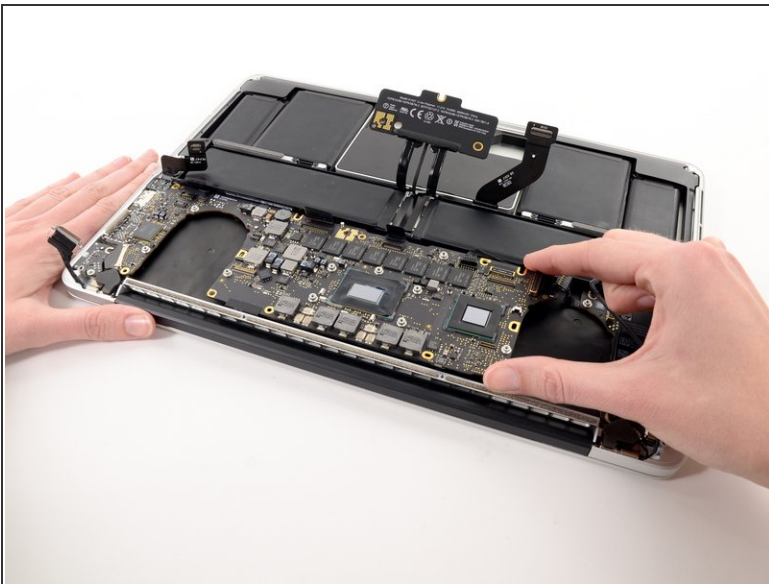
⚠ Be sure you are prying up on the connector, **not** the socket itself.

Step 11



- Remove the nine 3.3 mm T5 Torx screws securing the logic board and MagSafe DC-in board to the upper case.

Step 12



- Carefully grasp the corner of the logic board (opposite of the I/O ports) and lift the logic board out of the upper case.

To reassemble your device, follow these instructions in reverse order.

This document was generated on 2020-11-28 02:50:59 AM (MST).

