



MSI GP62MVR 6RF Leopard Pro LCD Screen Replacement

How to replace the LCD Screen in an MSI GP62MVR 6RF Leopard Pro.

Written By: Jordan Buck



INTRODUCTION

This guide demonstrates how to replace the LCD screen in the MSI GP62MVR 6RF Leopard Pro laptop. It is a moderately difficult process with no special skills required. Avoid touching the circuitry when the screen is off to avoid short-circuiting components or shocking yourself. If the screen has odd pixels, discolored or incorrect textures, or fails to display anything at all, then the LCD screen will need to be replaced. Follow this guide to change the LCD screen in a MSI GP62MVR 6RF Leopard Pro.

TOOLS:

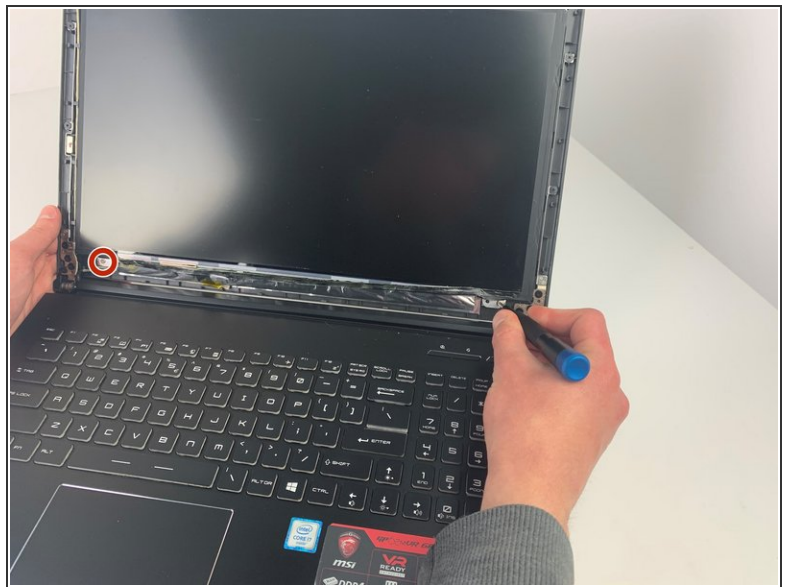
- [Jimmy](#) (1)
 - [Phillips #0 Screwdriver](#) (1)
-

Step 1 — LCD Screen



- Using the Jimmy tool, pry the front cover off at the seam.
- ⓘ The Jimmy tool is the utensil in the first picture in the user's hand.

Step 2



- Remove the four 2 mm screws on the bottom and top corners of the screen using a Phillips #0 screwdriver.

Step 3



- Using the Jimmy, pry off the unscrewed LCD display.
- ⓘ Make sure the black adhesive is out of the way.
- ⚠ Don't pull the screen completely off, as the screen will still be attached.

Step 4



- Remove the ribbon cable by pulling on the bar code tab.

To reassemble your device, follow these instructions in reverse order.