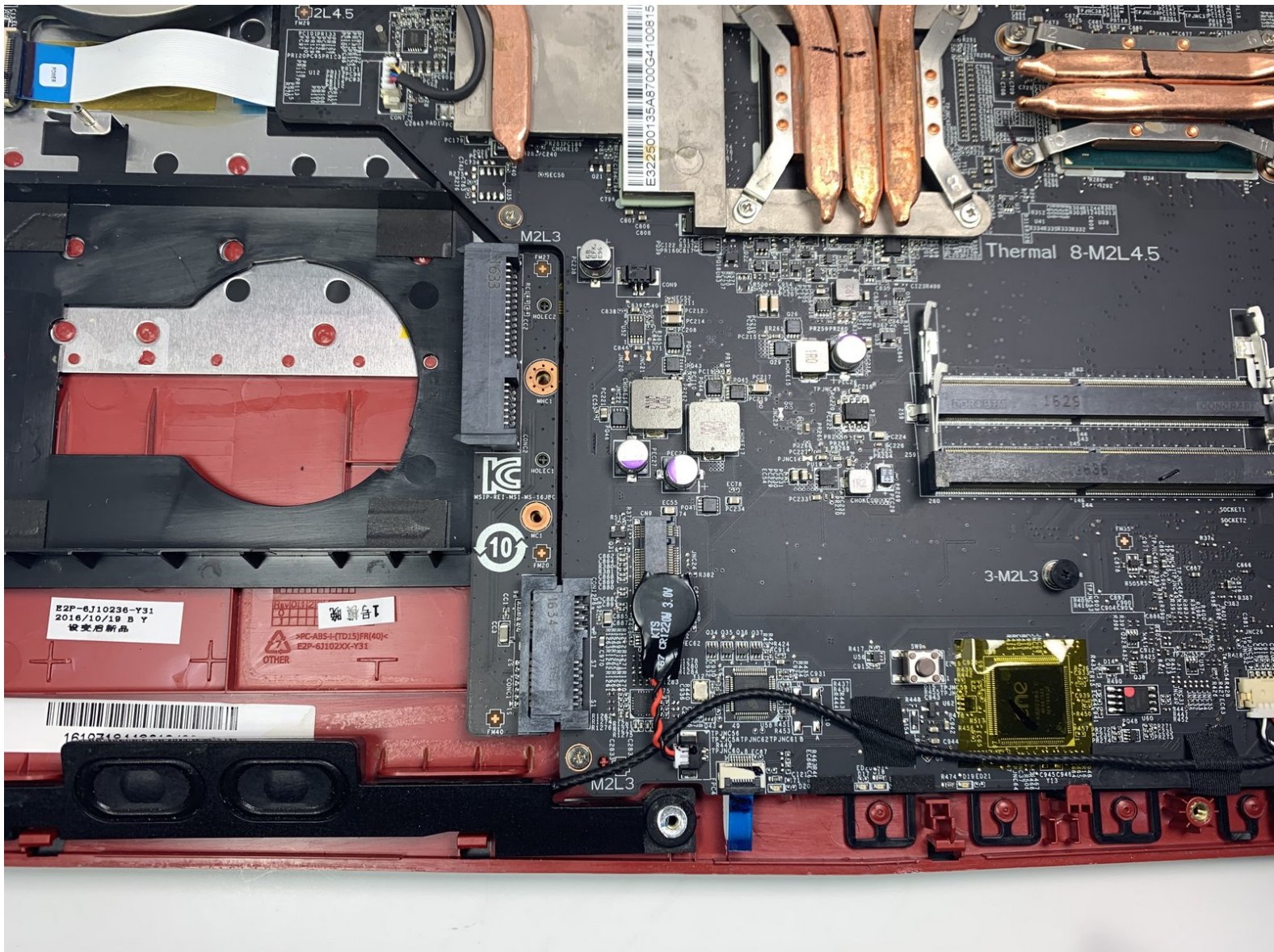




Written By: Jordan Buck



Page 1 of 5

INTRODUCTION

This guide demonstrates how to replace the Solid State Drive (SSD) in the MSI GP62MVR 6RF Leopard Pro laptop. It is a simple process with no special skills required. Avoid touching the circuitry when the case is open to avoid short-circuiting components or shocking yourself. If the SSD is full and storage needs to be expanded or it has been corrupted, then the SSD should be replaced. Follow this guide to change the SSD in a MSI GP62MVR 6RF Leopard Pro. Also be sure to back up any data on the current SSD before replacing it.



TOOLS:

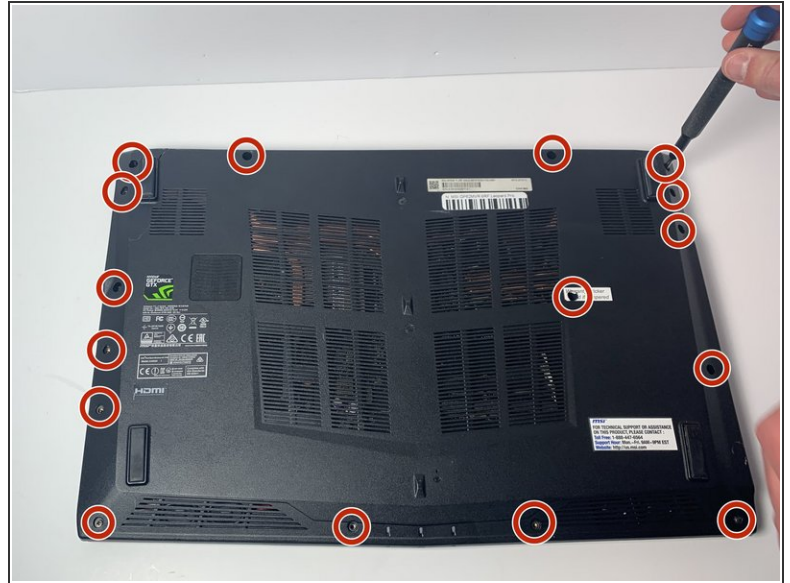
- [Jimmy](#) (1)
- [Phillips #0 Screwdriver](#) (1)



PARTS:

- [Crucial P3 NVMe PCIe M.2 2280SS SSD - solid performance, switching from HDD or SATA to NVMe™](#) (1)
- [Crucial P3 Plus NVMe PCIe M.2 2280SS SSD - fast Gen4 NVMe™ storage for data-intensive applications](#) (1)
- [Crucial P5 Plus NVMe PCIe M.2 2280SS SSD - professionals, creatives, and hardcore gamers](#) (1)

Step 1 — Bottom Cover



- Place the laptop upside down.
- Remove the sixteen 5.5 mm screws with a Phillips #0 screwdriver.

Step 2



- Use the Jimmy tool to evenly pry loose the bottom cover.
- Ensure that all sides are detached from the plastic hinging before attempting to remove the bottom cover.

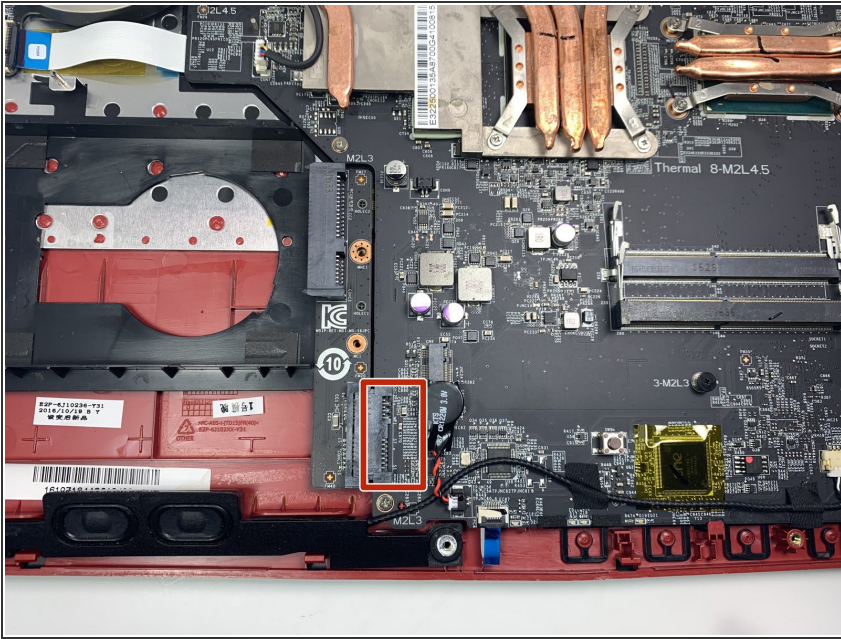
Step 3



- Remove the back cover.

⚠ Touching circuitry could damage components or result in personal shock; it is recommended that you now wear latex gloves to prevent both issues.

Step 4 — SSD



- Push the tab down to release the SSD.
- Remove the SSD.

To reassemble your device, follow these instructions in reverse order.