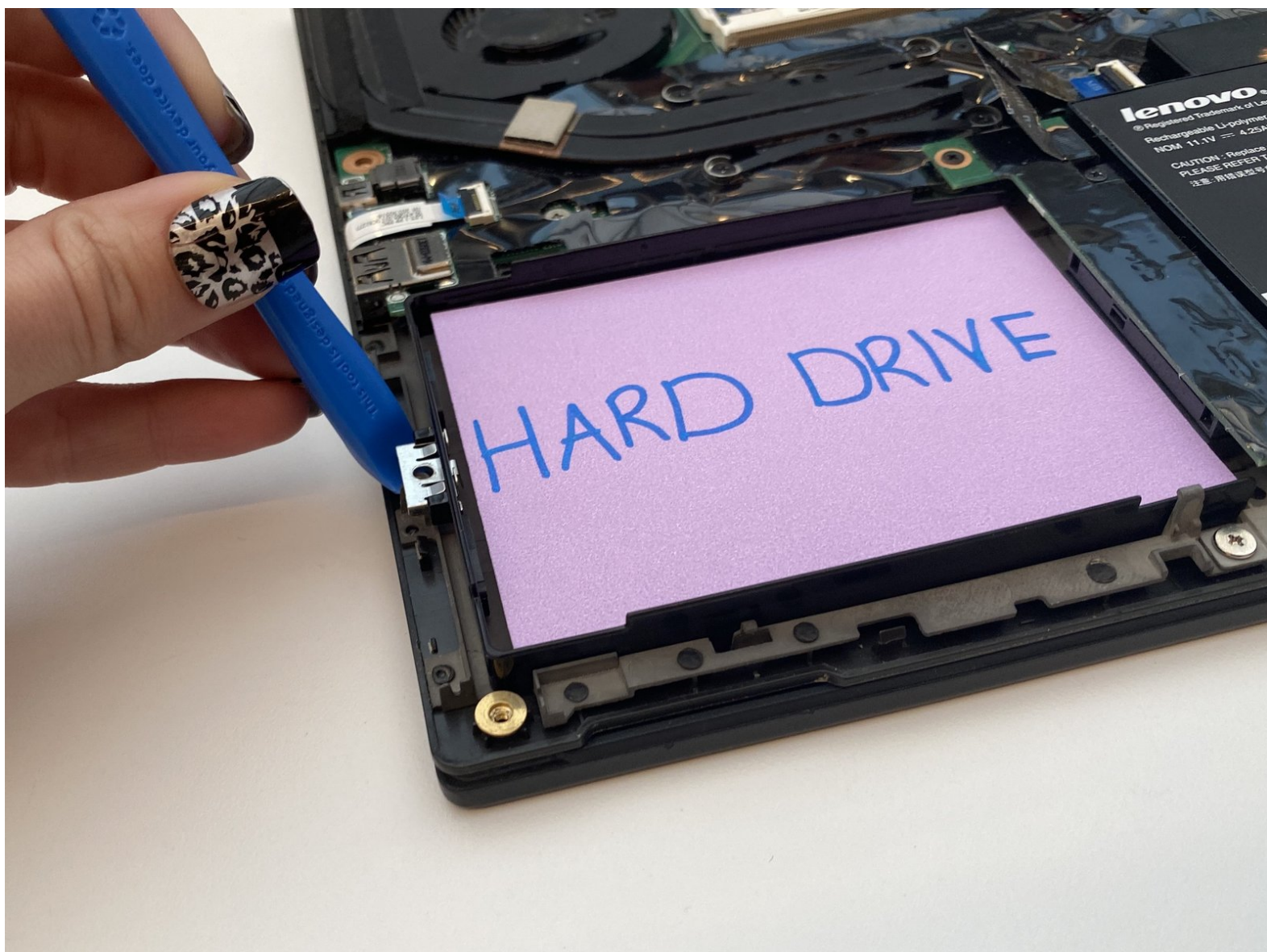




Lenovo ThinkPad T431S Hard Drive Replacement

This guide will show you how to locate and...

Written By: Christine Portanova



INTRODUCTION

This guide will show you how to locate and replace the Lenovo T431s hard drive. The hard drive is responsible for storage of your computer’s processing and operating files and raw data. If you are experiencing slow processing speeds, glitches, or lack of file space, you might need a new hard drive.



TOOLS:

- [iFixit Opening Tool](#) (1)
- [Phillips #1 Screwdriver](#) (1)



PARTS:

- [1 TB SSD](#) (1)
- [250 GB SSD](#) (1)
- [Crucial MX500 500 GB SSD](#) (1)
- [2 TB SSD](#) (1)

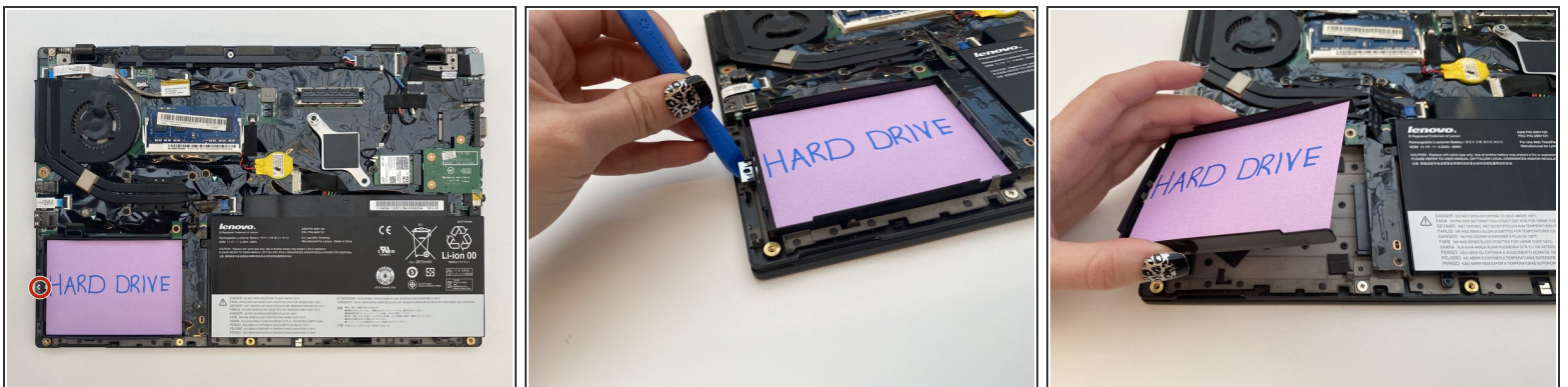
Step 1 — Hard Drive



⚠ Remember before starting any disassembly, to prevent electric shock or harm, disconnect the laptop from any external power source and make sure device is powered off.

- Use a Phillips #1 screwdriver to remove the eight 5.0 mm screws from the panel.
- After loosening the screws, use the three opening tools to take the back panel off of the rest of the device.

Step 2



- Remove the single 3 mm screw holding hard drive bracket in place.
- Grasp the hard drive and remove it from its bracket.
- Use a slight wiggle motion to carefully disconnect it from the front prong.

To reassemble your device, follow these instructions in reverse order.

