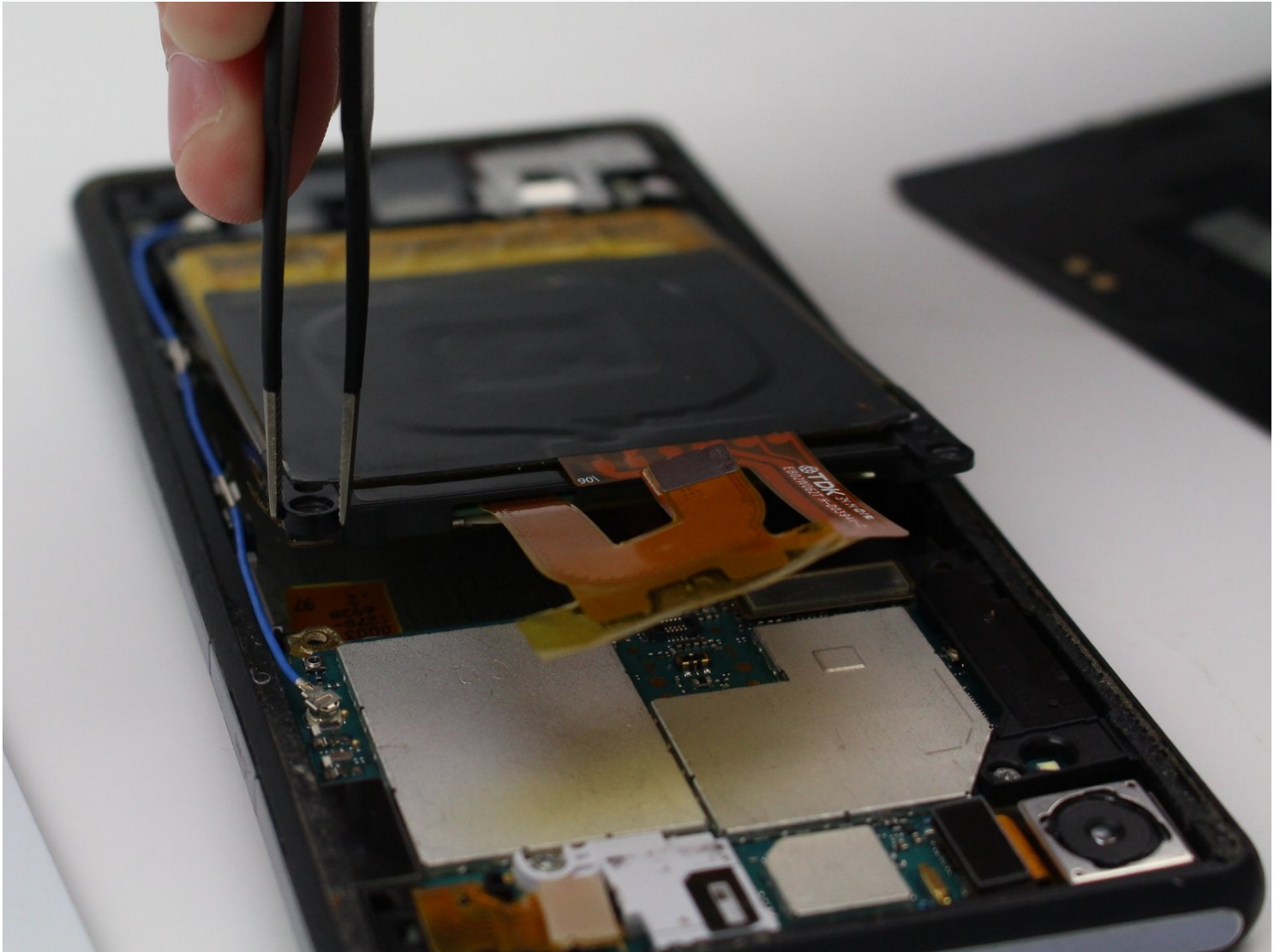




Sony Xperia Z1 Battery Replacement

A faulty battery may lead to short battery life...

Written By: Elijah Sigua



INTRODUCTION

A faulty battery may lead to short battery life on a single charge or your Sony Xperia Z1 losing power even when high battery percentage indications are shown. Replacing the battery will aid in increasing the time available for using your device and will contribute to the overall better functioning of the phone.

TOOLS:

[Spudger](#) (1)

[T5 Torx Screwdriver](#) (1)

[Heat Gun](#) (1)

[Suction Handle](#) (1)

[ESD Safe Blunt Nose Tweezers](#) (1)


[Halberd Spudger](#) (1)

[iFixit Opening Tool](#) (1)

[iFixit Opening Picks \(Set of 6\)](#) (1)

Step 1 — Battery



 Before you begin, use caution while handling a heat gun.

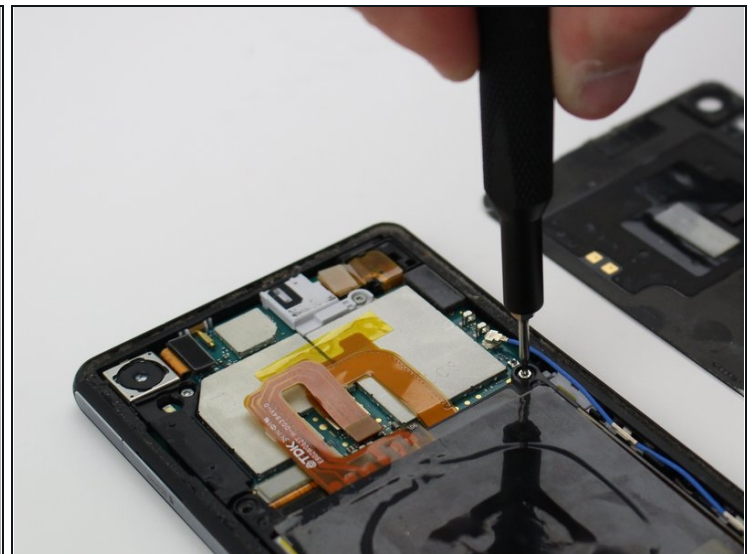
- With caution to hot temperatures, glide a heat gun over the outer edges of the phone bezel to soften the adhesive securing the back panel to the phone.

Step 2



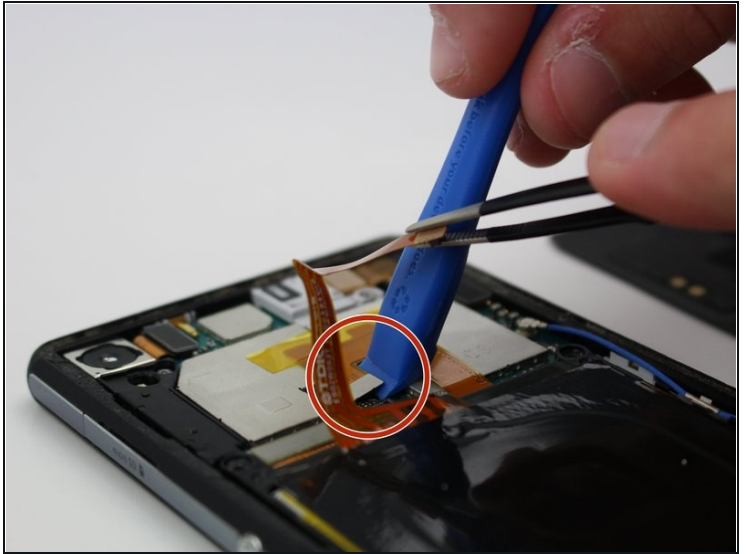
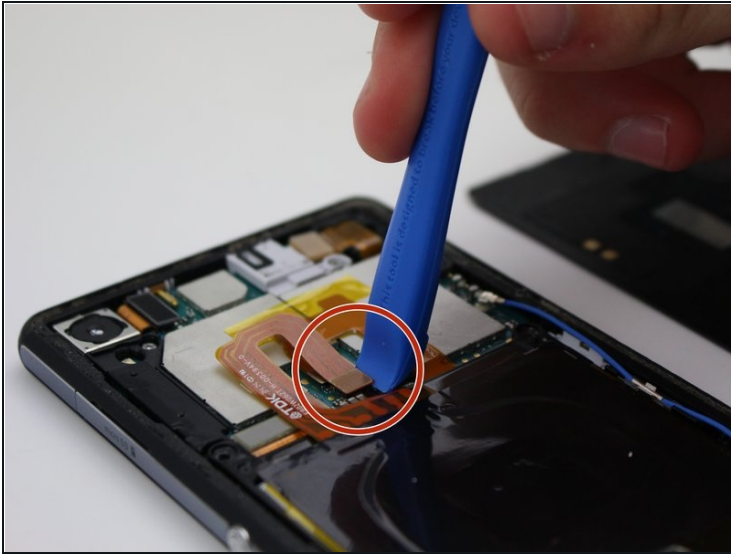
- Apply a suction cup tool to the center of the back panel and gently pull the panel off the back of the phone.
- If you are experiencing difficulty, use an opening pick to slide into the crack in between the panel and the rest of the phone body to pry off the back.

Step 3



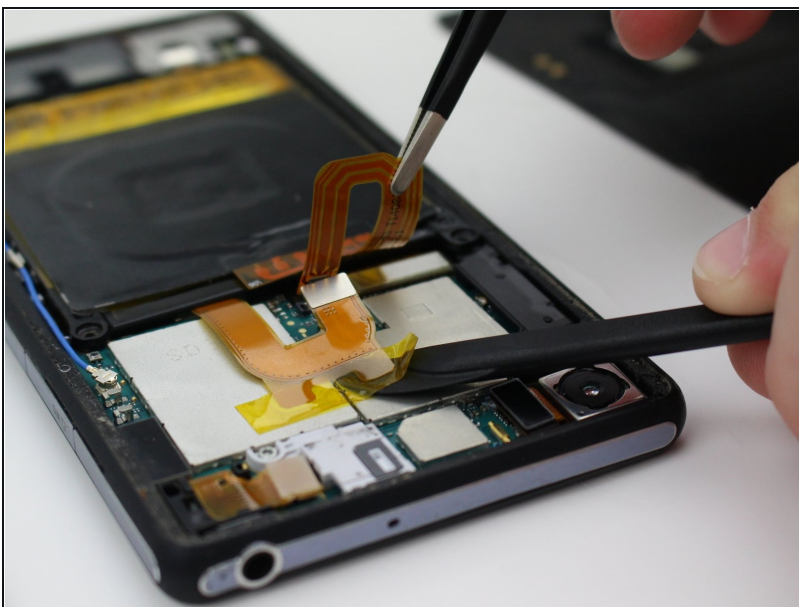
- Use the Torx T5 screwdriver to remove the two 3.81mm screws from the corners of the battery.

Step 4



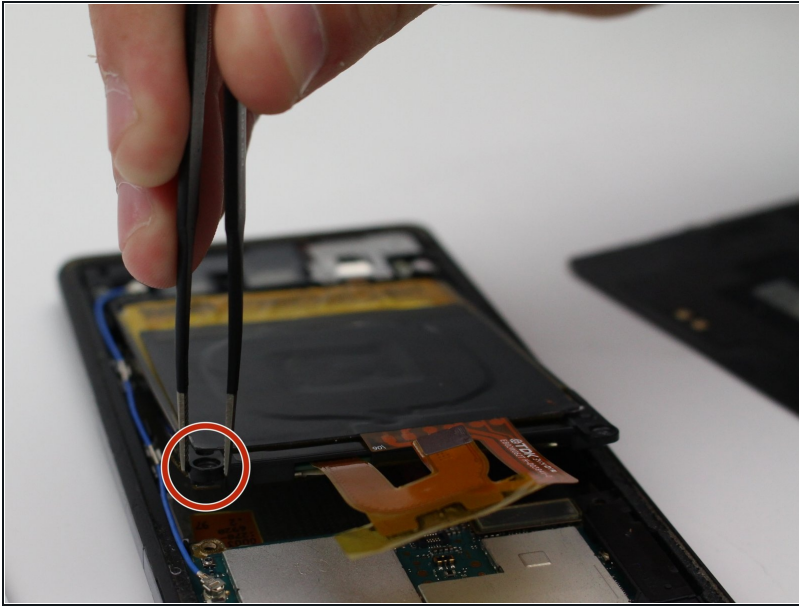
- Use the plastic opening tool to gently pry off the two flex connectors from the motherboard. Getting access to one of the connectors requires prying off the other first, so be sure to remove the top connector first.
- ① **Tip:** you may need to use the [tweezers](#) to gently hold the top connector out of the way while prying off the bottom connector.

Step 5



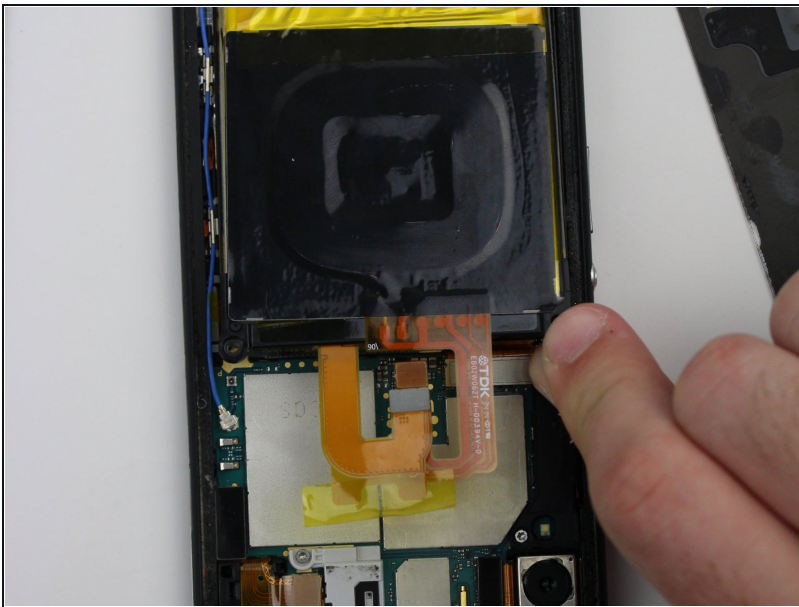
- Slowly slip the halberd spudger underneath the rest of the orange flex cable to carefully peel the adhesive portion away from the rest of the phone.

Step 6



- Use the tweezers to grab the top right corner of battery and carefully lift it up and away from the phone.

Step 7



- Once the battery is at a safe enough height, grip the corner of the battery and slowly pull it out of the phone.
- ① The old battery can be recycled at any local office supply store that supports recycling used batteries.

To reassemble your device, follow these instructions in reverse order.