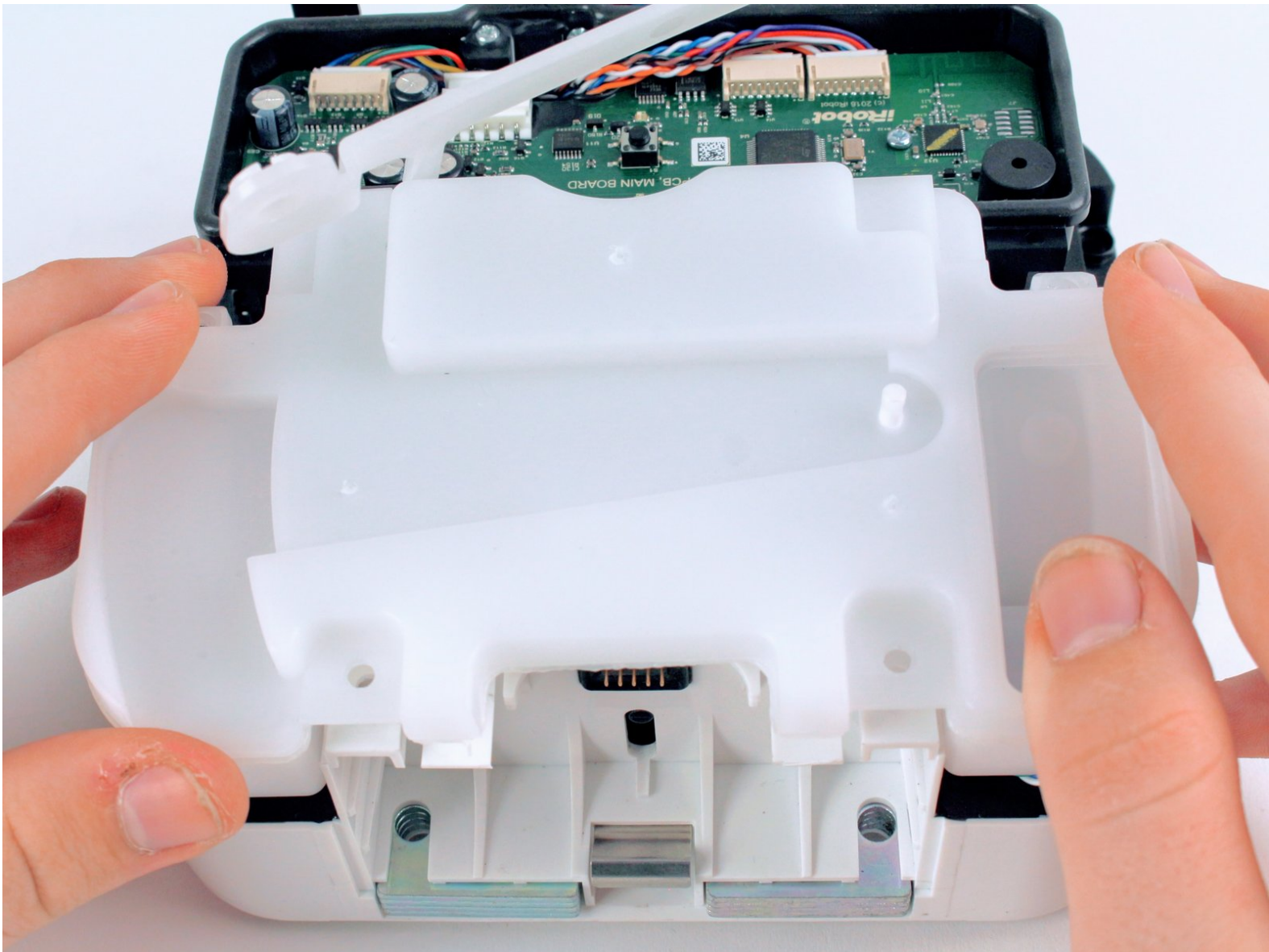




# iRobot Braava Jet 240 Tank Replacement

Use this guide to replace the tank in your iRobot Braava Jet 240, model number: B240020.

Written By: Claire Franz



## INTRODUCTION

If the tank in your iRobot Braava Jet 240 needs to be replaced, follow this guide.

After water is poured into the robot and passes through the filter, it is held in the tank. The tank is connected to the tubing and pump. This allows the robot to eject water from the nozzle onto the cleaning surface.

The tank might need to be removed, cleaned, and reinstalled if the robot is spraying dirty water. If the tank itself is damaged, it should be completely replaced.



### TOOLS:

- [Phillips #1 Screwdriver](#) (1)
  - [iFixit Opening Tool](#) (1)
-

## Step 1 — Battery



- Turn the device off.

## Step 2



- Use your fingers to gently pop out the battery.

## Step 3 — Mop Pad



- Lift up the handle to reveal the eject button.

## Step 4



- Use your finger to push the eject button forward.

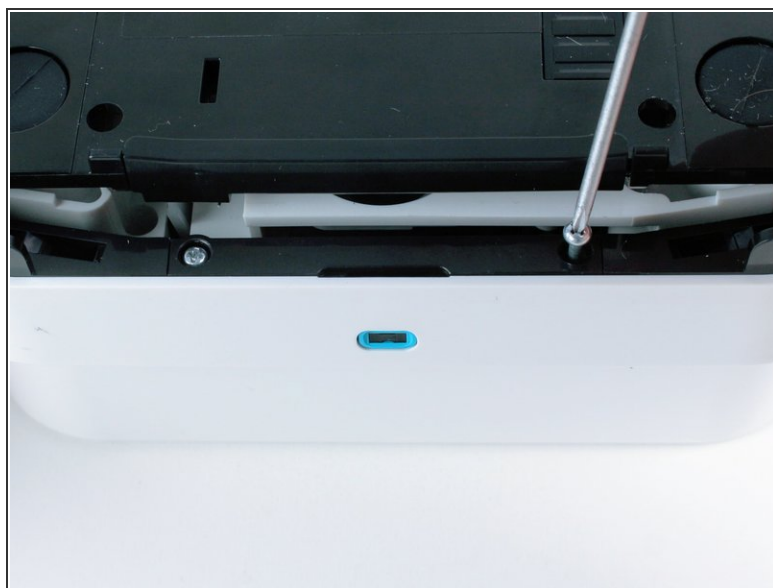


## Step 5



- Tilt the robot on its side and let the mop pad slide out.

## Step 6 — Front Shell



- Remove the two 22.0 mm screws on the bottom-front of the robot using a Phillips #1 screwdriver.

## Step 7



- Use a Phillips #1 screwdriver and an iFixit opening tool to remove the two 15.0 mm screws on the front sides of the robot.

## Step 8



- Carefully pull back on the front shell to remove it from the robot.

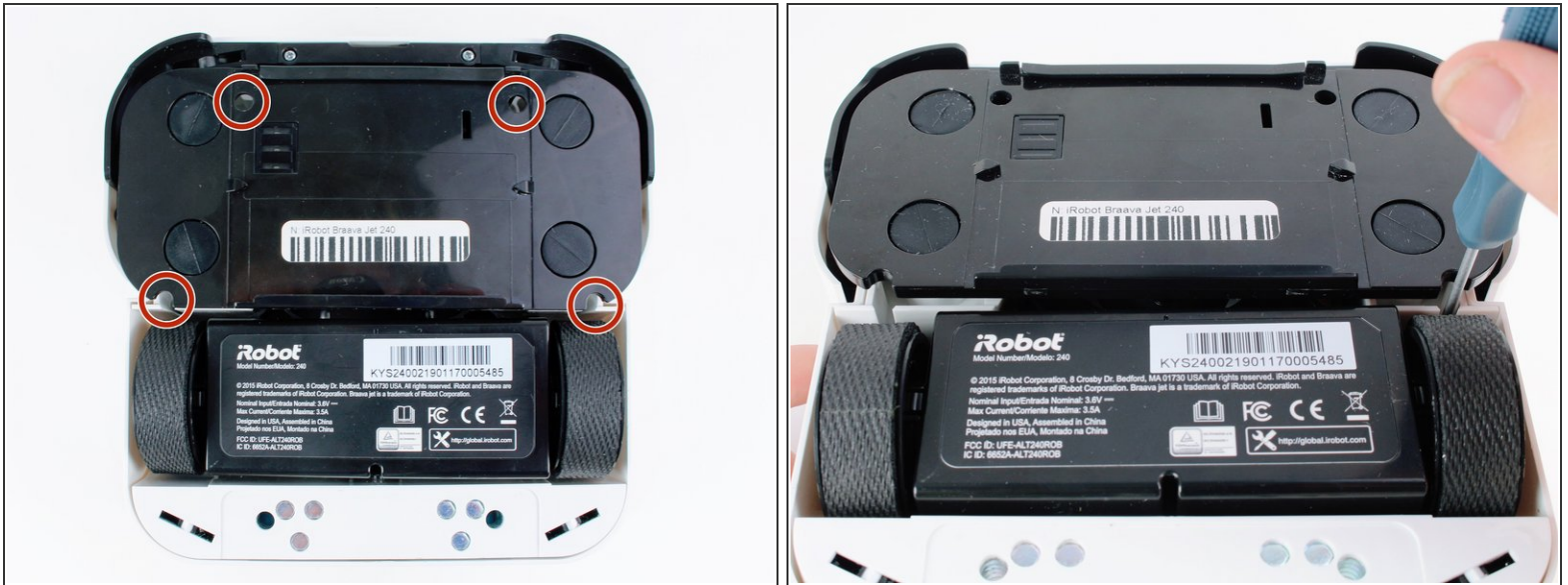
## Step 9 — Back Shell



- Insert a Phillips #1 screwdriver through the screw holes.
- Unscrew the two 9.7 mm screws.



## Step 10



- Unscrew the four 9.7 mm screws using a long neck #1 Phillips screwdriver.
- ⓘ If the screws are unscrewed but do not come out easily, turn the robot upside down and gently shake it.

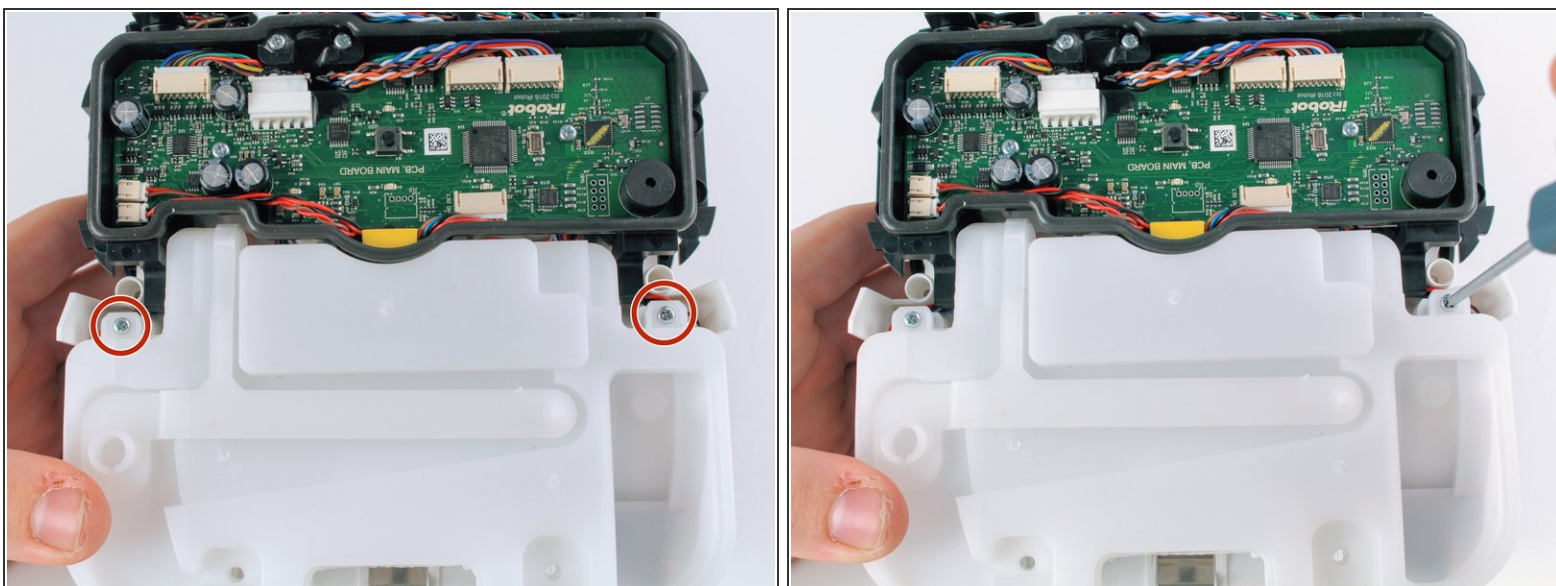
## Step 11



- Pull up on the back shell to remove it from the robot.
- ✦ For reassembly, pop the mop pad release trigger back into place if it fell out during back shell removal.

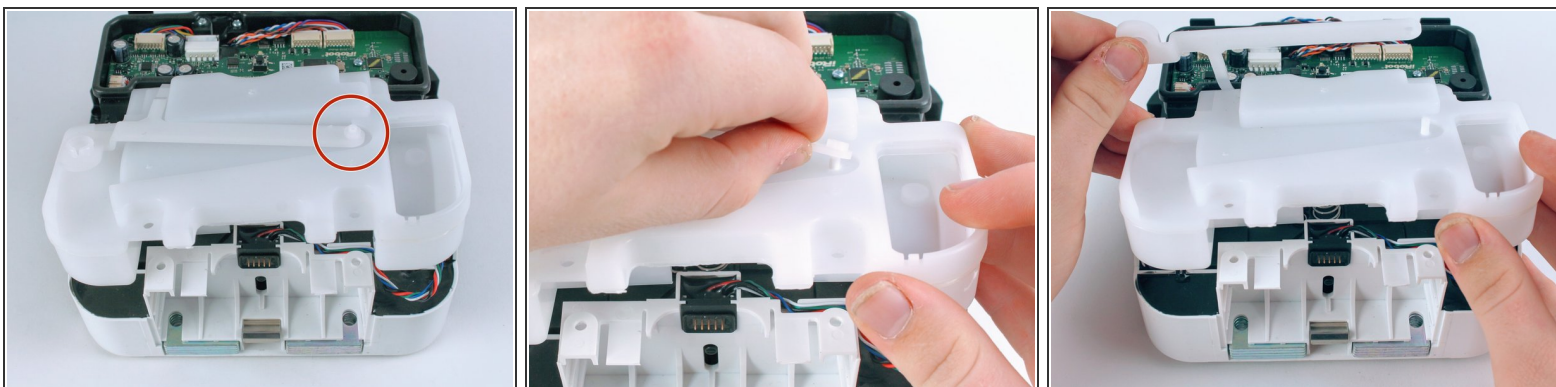


## Step 12 — Tank



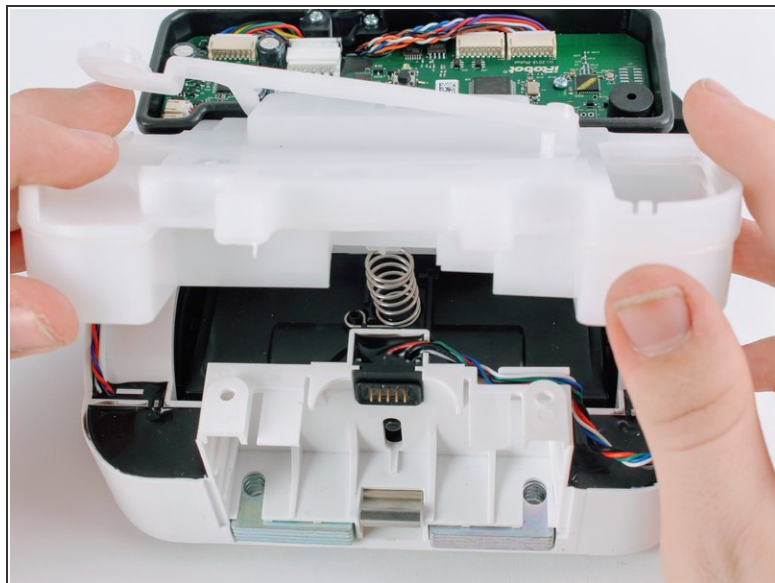
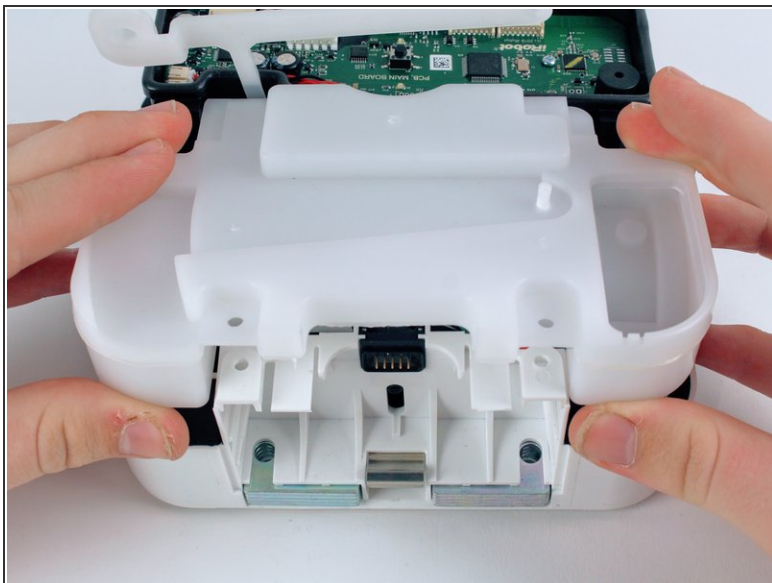
- Use a Phillips #1 screwdriver to remove the two 9.7 mm screws on the tank.

## Step 13



- Pull up on the L - shaped plastic piece and remove it from the tank assembly.

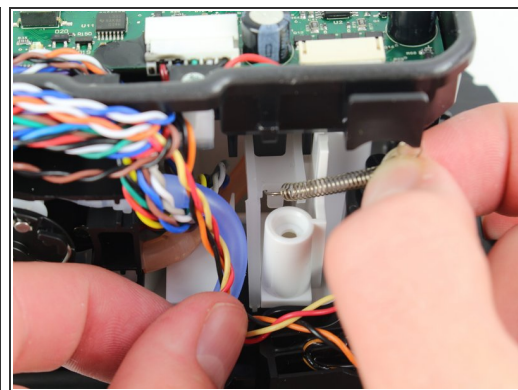
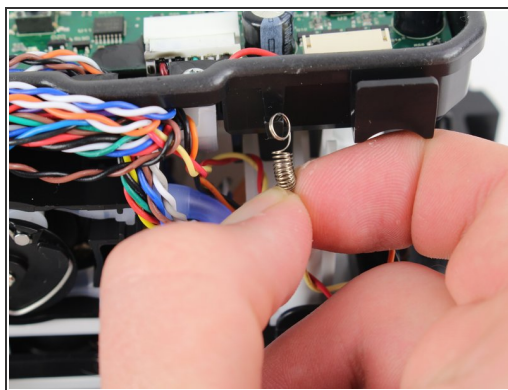
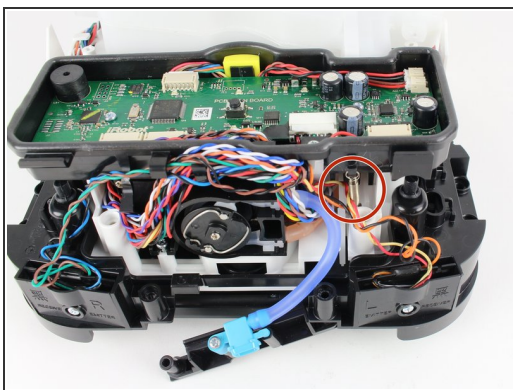
## Step 14



- Lift the tank up and away from the device.

⚠ Don't pull the tank too hard because it is still attached to the water tube at the back.

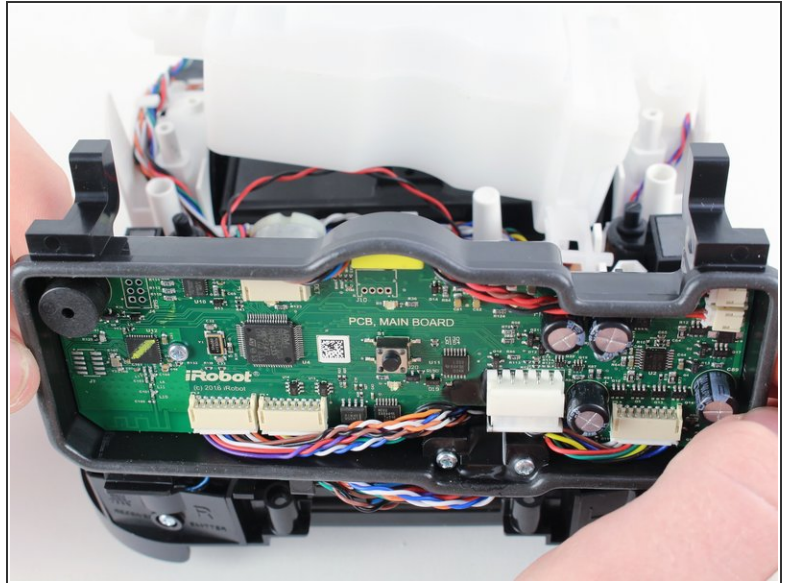
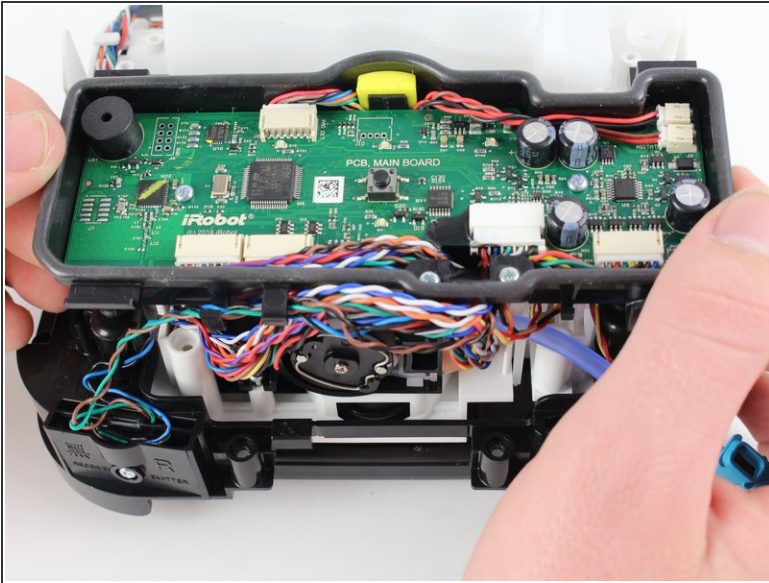
## Step 15



- First pull up, then pull down on the spring to detach it from the hooks.

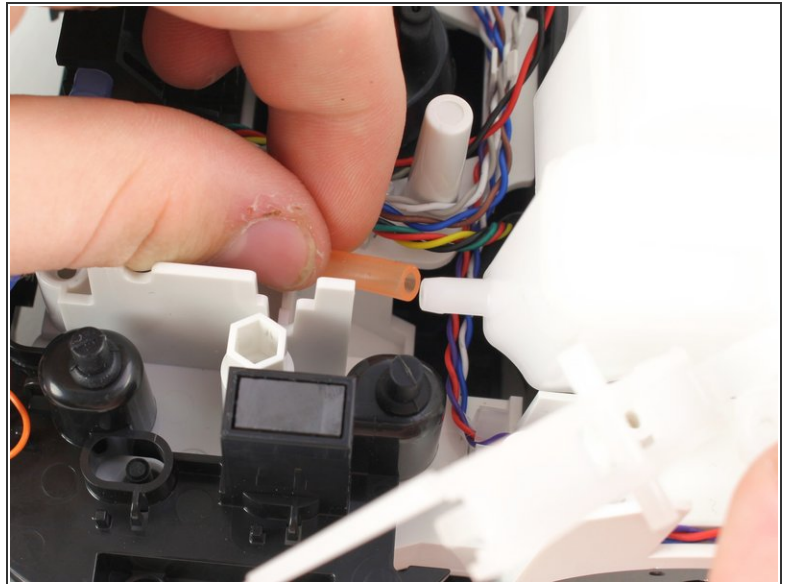
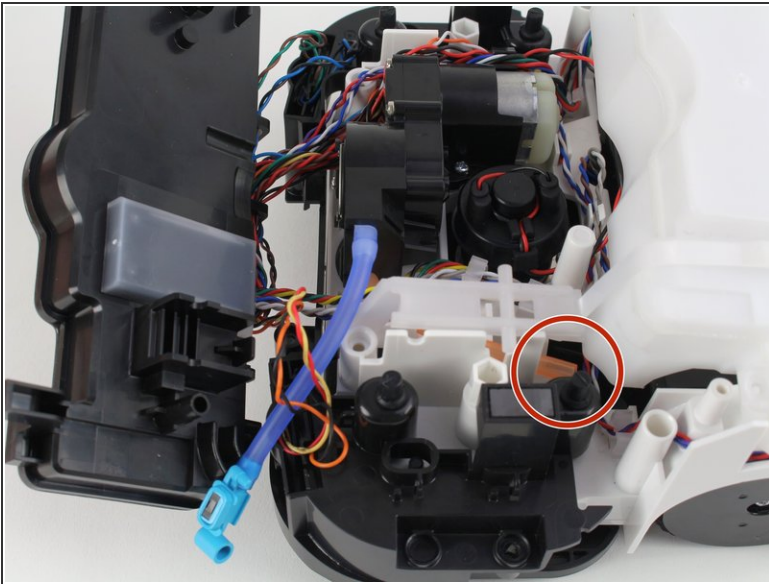


## Step 16 — Remove the motherboard case



- Lift up on the motherboard case to remove it from the device. This will expose the water tube that is attached to the tank.

## Step 17



- Pull the tubing off of the tank connector.



To reassemble your device, follow these instructions in reverse order.