



iRobot Braava Jet 240 Wheel Replacement

This guide shows you how to replace the wheels on your iRobot Braava Jet 240, model number: B240020.

Written By: Claire Franz



INTRODUCTION

If the wheels on your iRobot Braava Jet 240 need to be replaced, follow this guide.

The wheels of the iRobot Braava Jet 240 are connected to the motor assembly and allow the robot to move around the room to clean. If there is debris caught in the wheels, removing them to clean out debris will be useful. Additionally, if the tire tread is loose or the wheels are otherwise damaged, they should be removed and replaced.



TOOLS:

- [Phillips #1 Screwdriver](#) (1)
-

Step 1 — Battery



- Turn the device off.

Step 2



- Use your fingers to gently pop out the battery.

Step 3 — Mop Pad



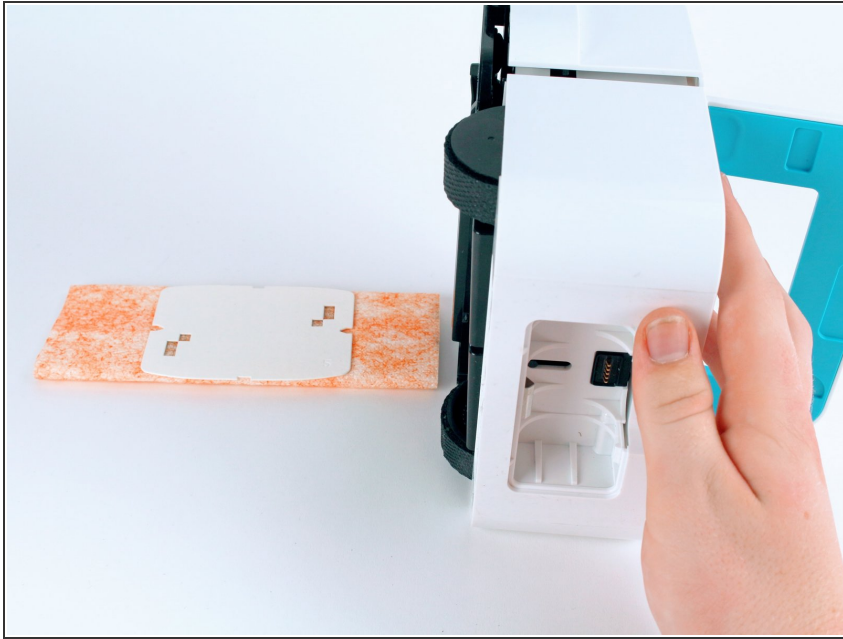
- Lift up the handle to reveal the eject button.

Step 4



- Use your finger to push the eject button forward.

Step 5



- Tilt the robot on its side and let the mop pad slide out.

Step 6 — Wheel



- Using your thumbs, first push back the motor assembly, then push up.

Step 7



- Remove the 11.55 mm screws in the middle of both wheels using the Phillips #1 screwdriver.

Step 8



- Pull the wheel off from the axel, pulling from the top end first so it can slide out at an angle.
- ⓘ It will be easier to remove the wheels if the motor assembly is tilted so that the wheel that you are removing is elevated.

To reassemble your device, follow these instructions in reverse order.