



# Toshiba T2400CS Hard drive Replacement

Disassemble the top part of the laptop to gain access to the hard drive bracket.

Written By: slydoga



## Step 1 — Removing the battery



- 1.A) Slide the little plastic cover forward
- 1.B) Push the button underneath the cover
- 1.C) Slide the battery out

## Step 2 — Undo the screws on the bottom of the laptop



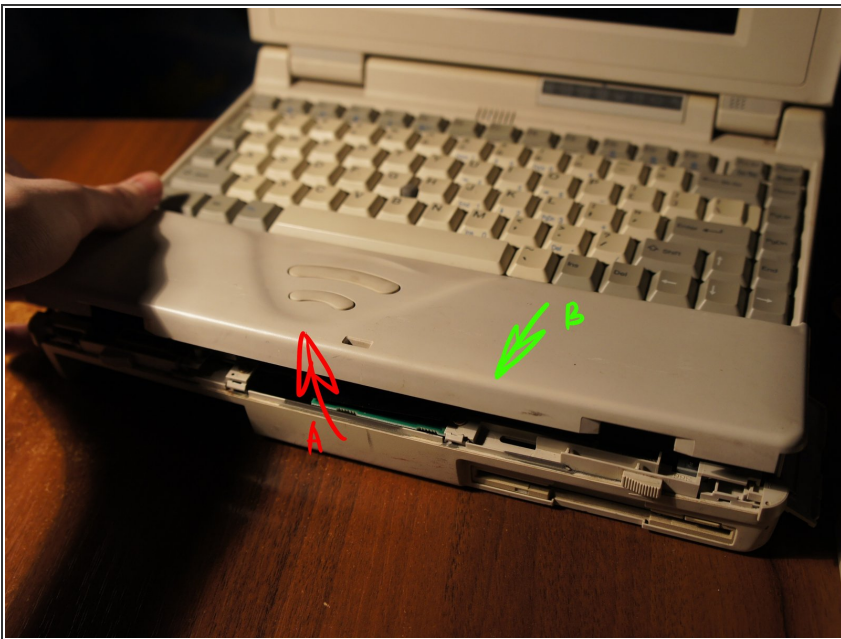
- The bottom of the laptop has 6 visible screws and the 7th one is hidden under the battery

### Step 3 — Undo the screws on the back of the laptop



- The back of the laptop has 2 screws.

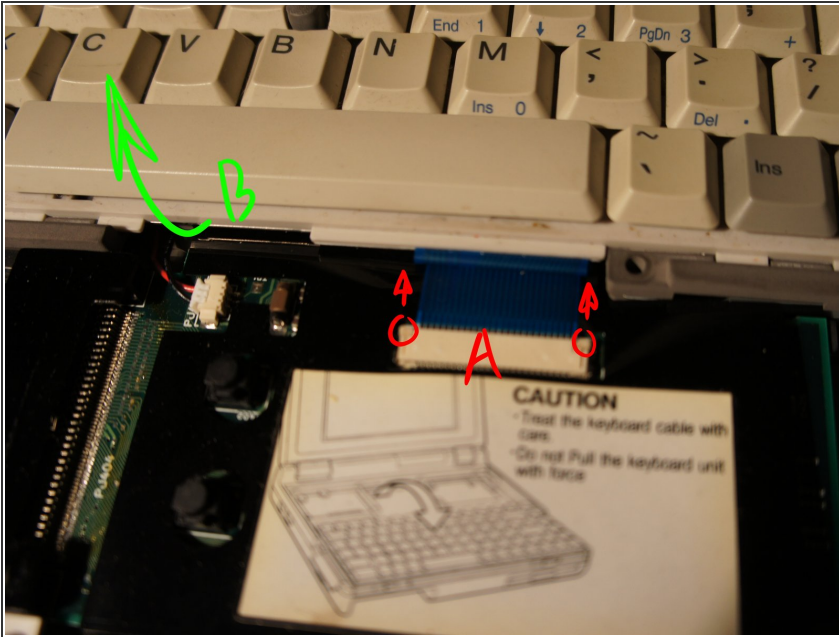
### Step 4 — Removing the palmrest



- 4.A) Gently lift the bottom of the palmrest up
- 4.B) Carefully pull the palmrest toward yourself, dislodging it from the top half of the case



## Step 5 — Removing the keyboard



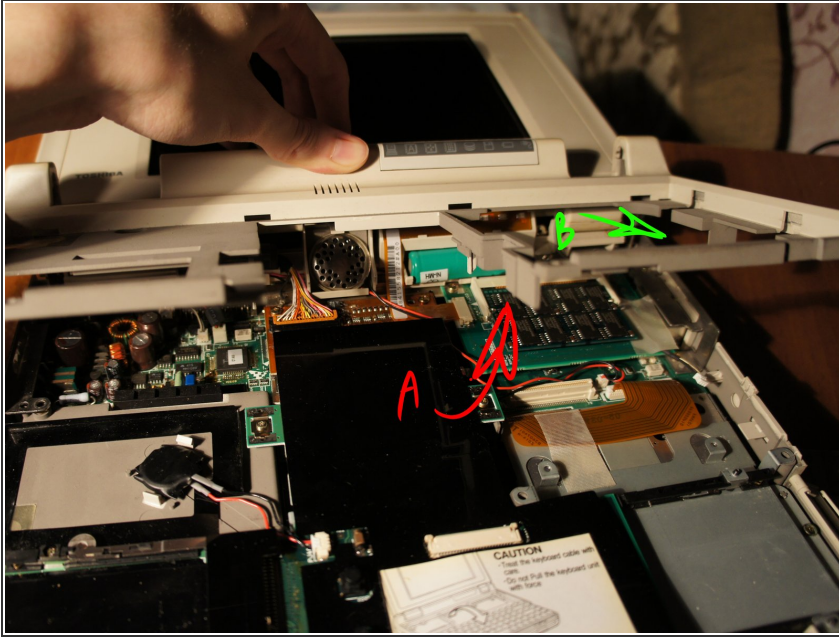
- 5.A) Gently release the ribbon cable tabs and pull the ribbon cable out
- 5.B) Raise the bottom of the keyboard and pull it out of the case

## Step 6 — Release the top part of the case



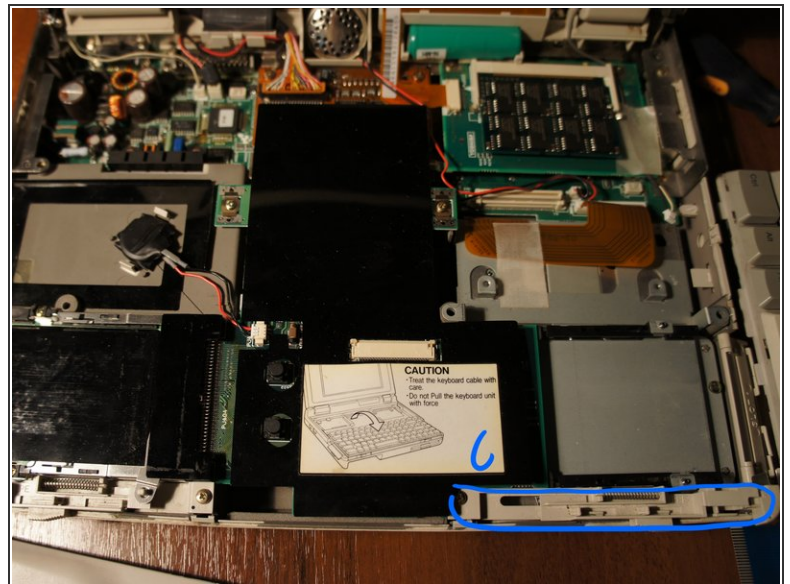
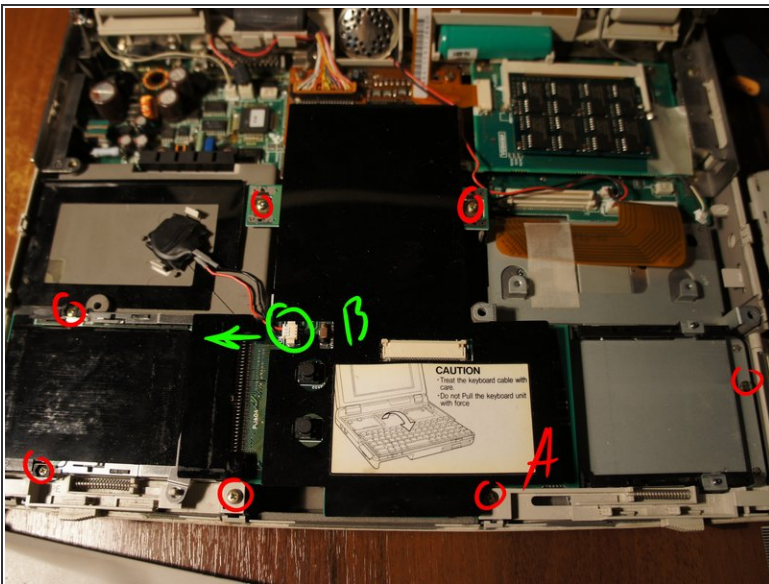
- 6.A) Undo the screw
- 6.B) Gently use a flat tool to pull back the plastic tabs, releasing the sides

## Step 7 — Remove the top part of the case



- 7.A) Carefully pull the bottom of the top part up
- 7.B) Gently pull up and toward yourself to remove the part

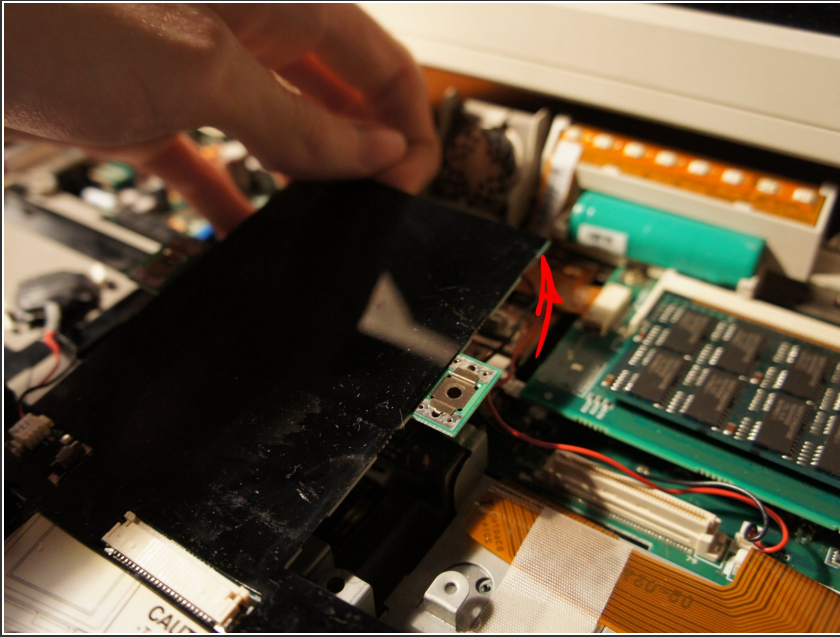
## Step 8 — Prepare to remove the daughter board



- 8.A) Undo all the highlighted screws
- 8.B) Carefully release the CMOS battery cable from the board
- 8.C) (optional) Lift up and remove the bottom right latch piece

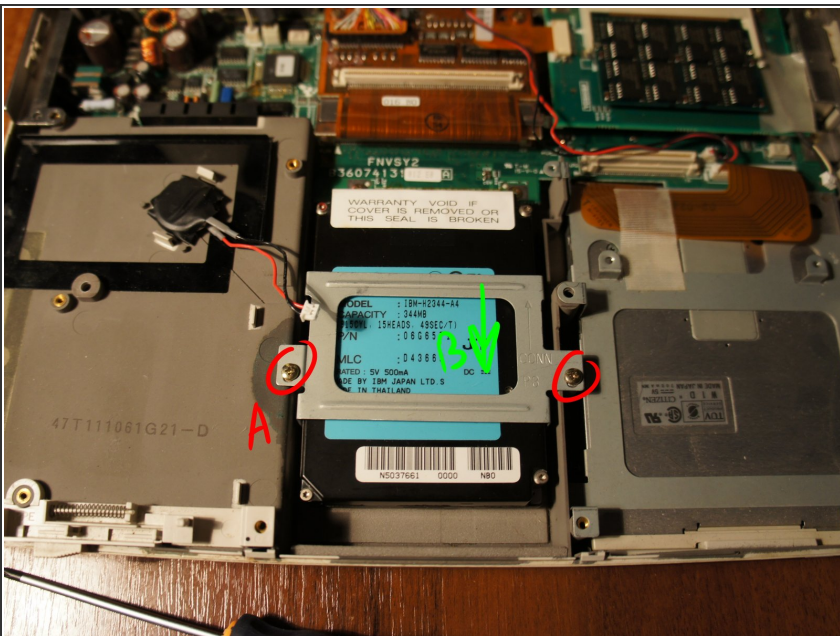


## Step 9 — Remove the daughter board



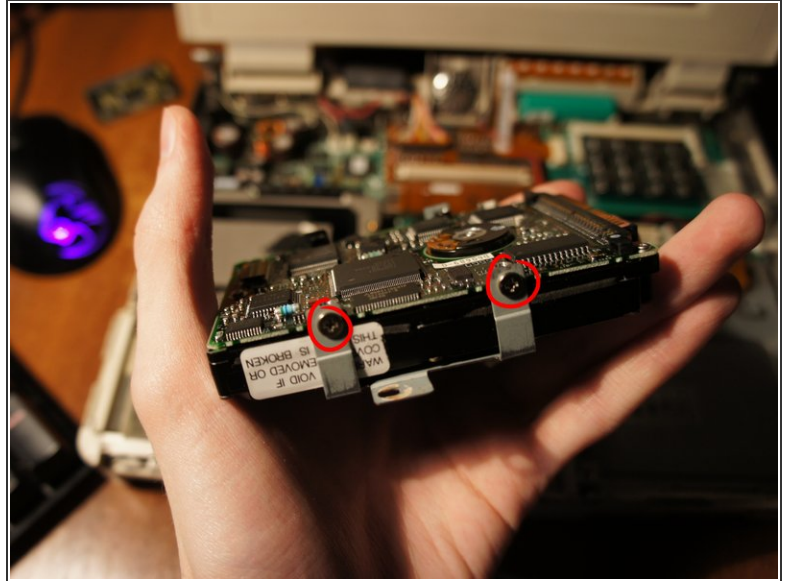
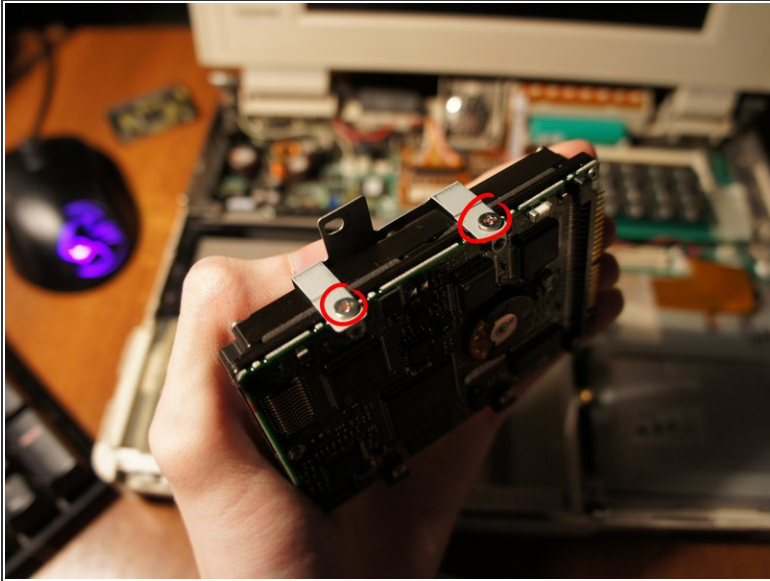
- Carefully but firmly lift up the top part of the daughter board by the corners from it's connector and lift the entire board out of the case.

## Step 10 — Remove the hard drive



- 10.A) Undo the screws holding the hard drive bracket in place
- 10.B) Slide the hard drive toward yourself to release it from the connector

## Step 11



- Undo the screws on each side of the bracket and your hard drive is free!
- To reassemble the computer with a new hard drive, repeat the steps backwards.

To reassemble your device, follow these instructions in reverse order.