



# HP Envy x360 m6-aq105dx Battery Replacement

This guide will instruct on how to replace the battery to your HP Envy x360 m6-aq105dx.

Written By: Ryan Blazier



---

## INTRODUCTION

A faulty battery results in no power transfer to the laptop, meaning it wont turn on or charge. This guide will instruct on how to replace the battery to your HP Envy.


---

### TOOLS:

- [Phillips #0 Screwdriver](#) (1)
  - [T5 Torx Screwdriver](#) (1)
  - [Jimmy](#) (1)
-

## Step 1 — Back Cover




 Ground yourself by touching a metal object or surface. This prevents electrical damage to other components in the laptop.

- Remove the two 7.8 mm screws using the Phillips #0 screwdriver.
- Remove the six 5.2 mm screws using the Torx T5 screwdriver.

## Step 2



 Light to moderate force is required to remove the back cover.

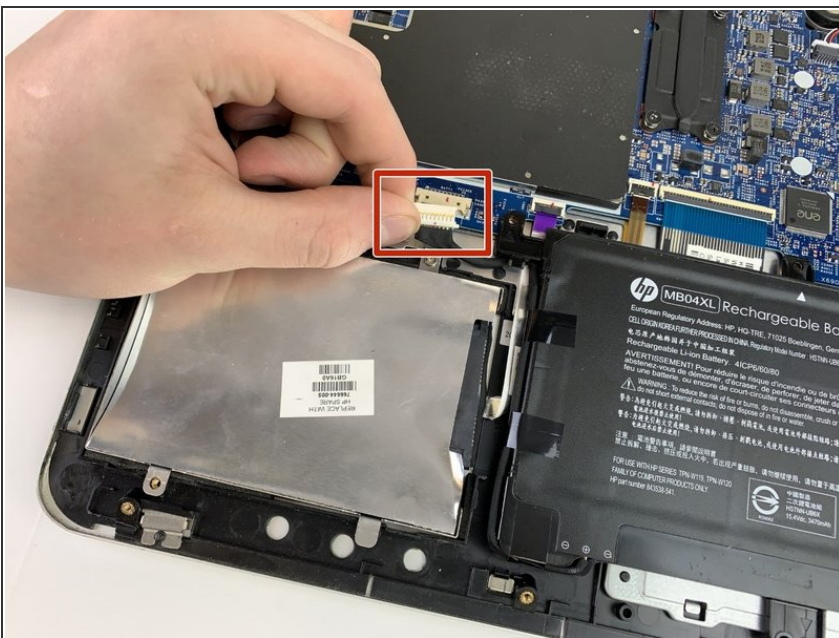
- Insert the Jimmy in between the frame of the laptop and the removable back cover and remove the back cover from the device.

## Step 3 — Battery



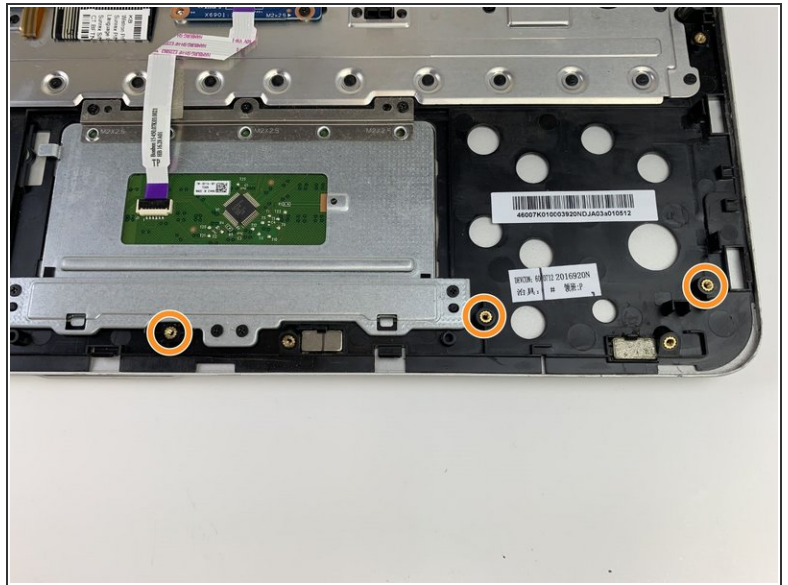
- ⚠ Attach the grounding bracelet's clip to the frame of the laptop, then put on the grounding bracelet.
- Remove the six 4.6mm screws securing the battery using the Phillips #0 screwdriver.

## Step 4



- Disconnect the power supply cable connected to the motherboard.

## Step 5



- Remove the battery from the device.

To reassemble your device, follow these instructions in reverse order.