



HP Envy x360 m6-aq105dx Hard Drive Replacement

This guide will instruct on how to replace the hard drive to your HP Envy x360 m6-aq105dx.

Written By: Cory Smith



INTRODUCTION

Hard Drives are responsible for permanently storing and retrieving data on a computer. This guide will instruct how to replace a faulty Hard Drive.



TOOLS:

- [Phillips #0 Screwdriver](#) (1)
- [T5 Torx Screwdriver](#) (1)
- [Jimmy](#) (1)




PARTS:

- [Laptop Hard Drive](#) (1)

Step 1 — Back Cover




 Ground yourself by touching a metal object or surface. This prevents electrical damage to other components in the laptop.

- Remove the two 7.8 mm screws using the Phillips #0 screwdriver.
- Remove the six 5.2 mm screws using the Torx T5 screwdriver.

Step 2



 Light to moderate force is required to remove the back cover.

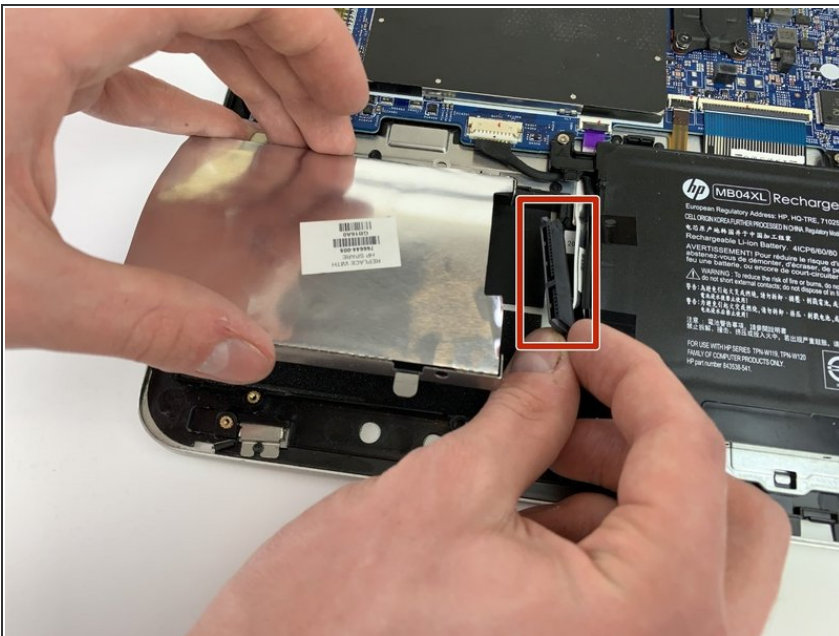
- Insert the Jimmy in between the frame of the laptop and the removable back cover and remove the back cover from the device.

Step 3 — Hard Drive



- ⚠ Attach the grounding bracelet's clip to the frame of the laptop then put on the grounding bracelet.
- Remove the two 4.6mm screws securing the hard drive in place using the Phillips #0 screwdriver.

Step 4



- Disconnect the cable plugged into the hard drive and remove the hard drive from the device.

To reassemble your device, follow these instructions in reverse order.